

Graham Town Center



AVAILABLE FOR LEASE

10113 224th St. E

Graham, WA 98338




**Property
Services**
LLC



FOR LEASE

AVAILABLE
FOR LEASE

SUITE 10113 6,596 SF.
\$20 SF/YR., NNN

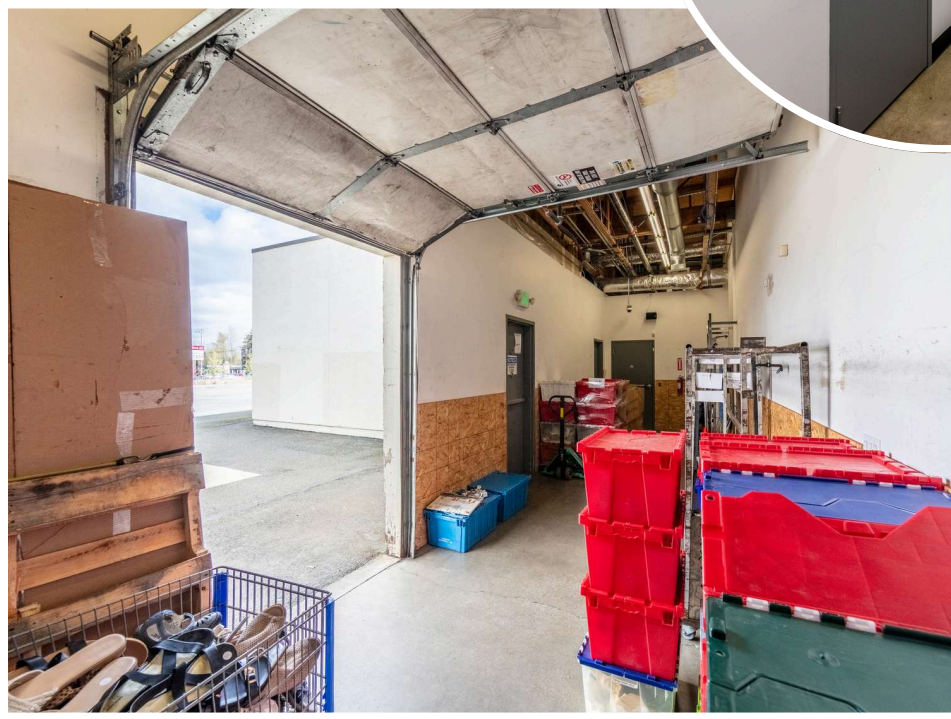
- 
- High traffic retail center in Graham located at main intersection of Meridian Ave E and 224 St. E
 - Safeway & Walgreens anchored
 - Established national and local tenant mix including Dollar Tree, Great Clips, PC Cleaners and Little Caesar's.
 - Ample parking field
 - Pylon signage available

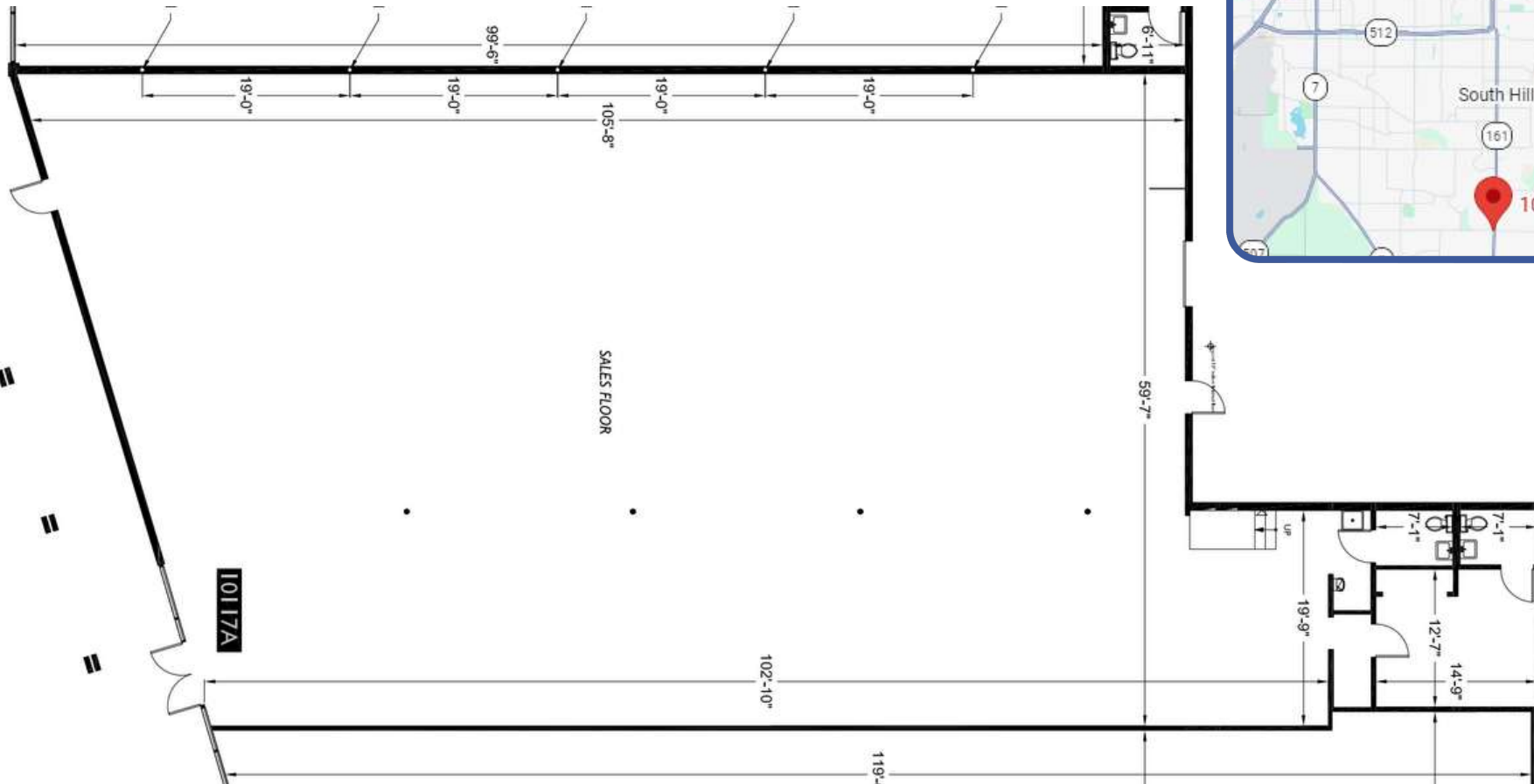
Broker: Syd Severe 425-495-1353 Syd@MKPS.net
PO Box 997 Snoqualmie, WA 98065

MK Property
Services
LLC



GRAHAM TOWN CENTER
10113 224th St. E
Graham, WA 98338





Broker: Syd Severe 425-495-1353 Syd@MKPS.net
 PO Box 997 Snoqualmie, WA 98065



2024	1 Mile	3 Miles	5 Miles
Population	2,344	40,193	95,340
Average Household Income	\$83,471	\$85,804	\$117,634



Graham Ace Hardware
YETI Tumblers
& Mugs at Ace®

Amici Italian Eatery

Domino's Pizza
Domino's Special
Slice Sauce

Safeway



Papa Murphy's |
Take 'N' Bake Pizza
Fresh
Scratch-Made Pizza



Dutch Bros Coffee

Graham Games

AutoZone Auto Parts

KeyBank

Next Level The
Gamers Den

10113

United States
Postal Service



161

161

161

161

224th St E

224th St E

224th St E

224th St E

Kassie's Korner

Child's Time Early
Learning Center

BROKER: SYD SEVERE

☎ 425-495-1353

✉ Syd@Mkps.net

MK Property Services

🏠 PO Box 997

Snoqualmie, WA 98065



The information supplied herein is deemed reliable but without any representation, warranty or guarantee, expressed or implied, as to its accuracy. Prospective Buyer/Tenant should independently investigate all material matters. Consult your attorney, accountant or other professional advisor