

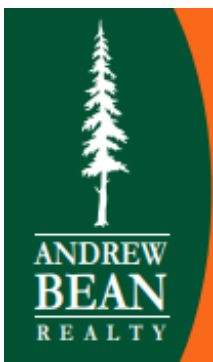
FOR SUBLEASE

9122 SE 67th Ave, Portland, Clackamas County, 97206

NO MULTNOMAH COUNTY TAXES!

DIRECT DEAL AVAILABLE!
Can be combined with 9124 SE 67th
for +/-16,000 SF

- +/-8,000 Sq. Ft. Shell of which +/-1,250 Sq. Ft. is Office
- One Grade-Level Loading Door (14' High X 14' Wide)
 - One Dock-High Door with Access for 53' Trailer
 - 16'-18' Foot Ceilings in Warehouse
 - Bonus Mezzanine Storage
 - Heavy 3-Phase Power
 - CALL FOR RATES



Andrew Bean, SIOR

503-819-5381

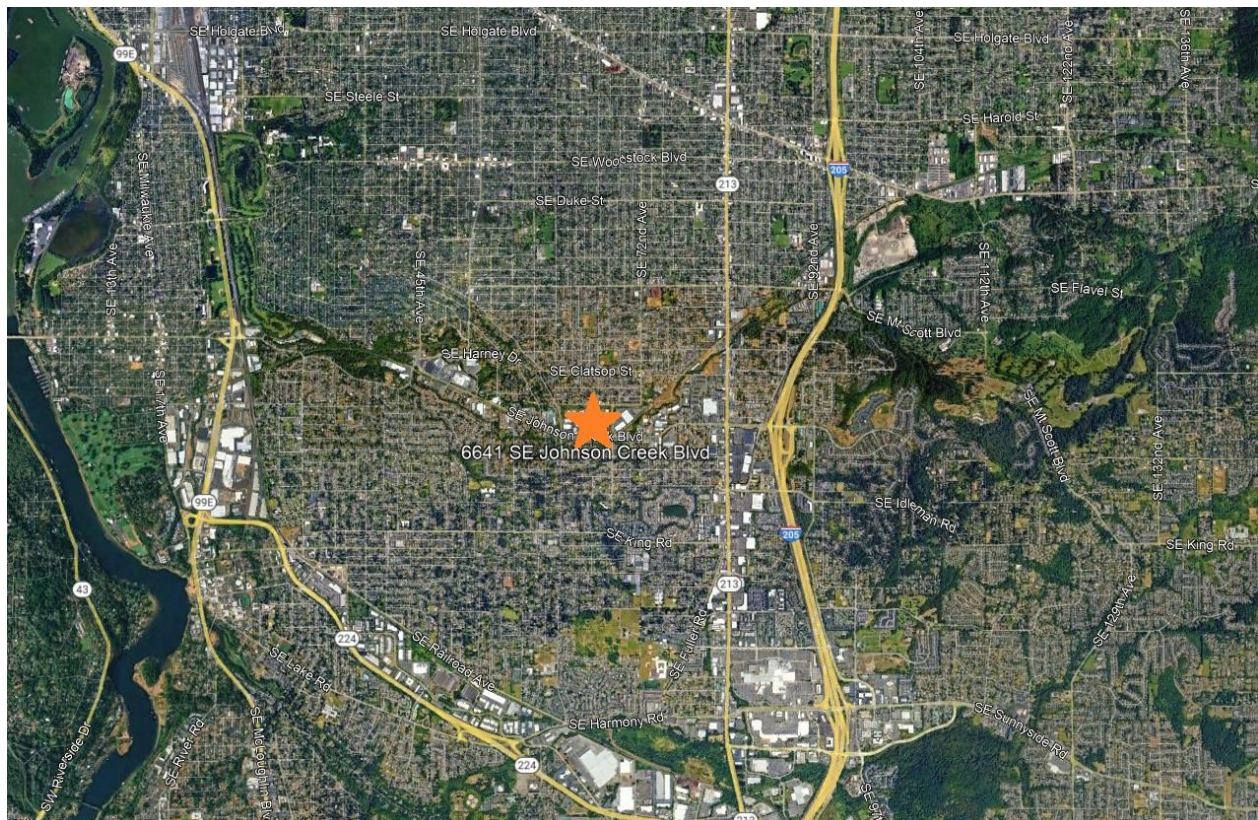
andrew@andrewbeanrealty.com

PO Box 10104
Portland, Oregon 97296

This information has been obtained by others and deemed to be reliable. However, a prospective purchaser or lessee is expected to verify all information to their own satisfaction.

FOR SUBLEASE

9124 SE 67th Ave, Portland, Clackamas County, 97206



Andrew Bean, SIOR

503-819-5381

andrew@andrewbeanrealty.com

This information has been obtained by others and deemed to be reliable. However, a prospective purchaser or lessee is expected to verify all information to their own satisfaction.