

COMMERCIAL LAND

301 W CURTIS STREET
SIMPSONVILLE, SC 29681



PROPERTY DETAILS

COTTON MILL OUTPARCEL

± 0.24 ACRES

ZONED ID (Innovative Design)

APPROVED USE: Retail, Office Building, Residential Duplex

2 BLOCKS FROM MAIN STREET
SIMPSONVILLE

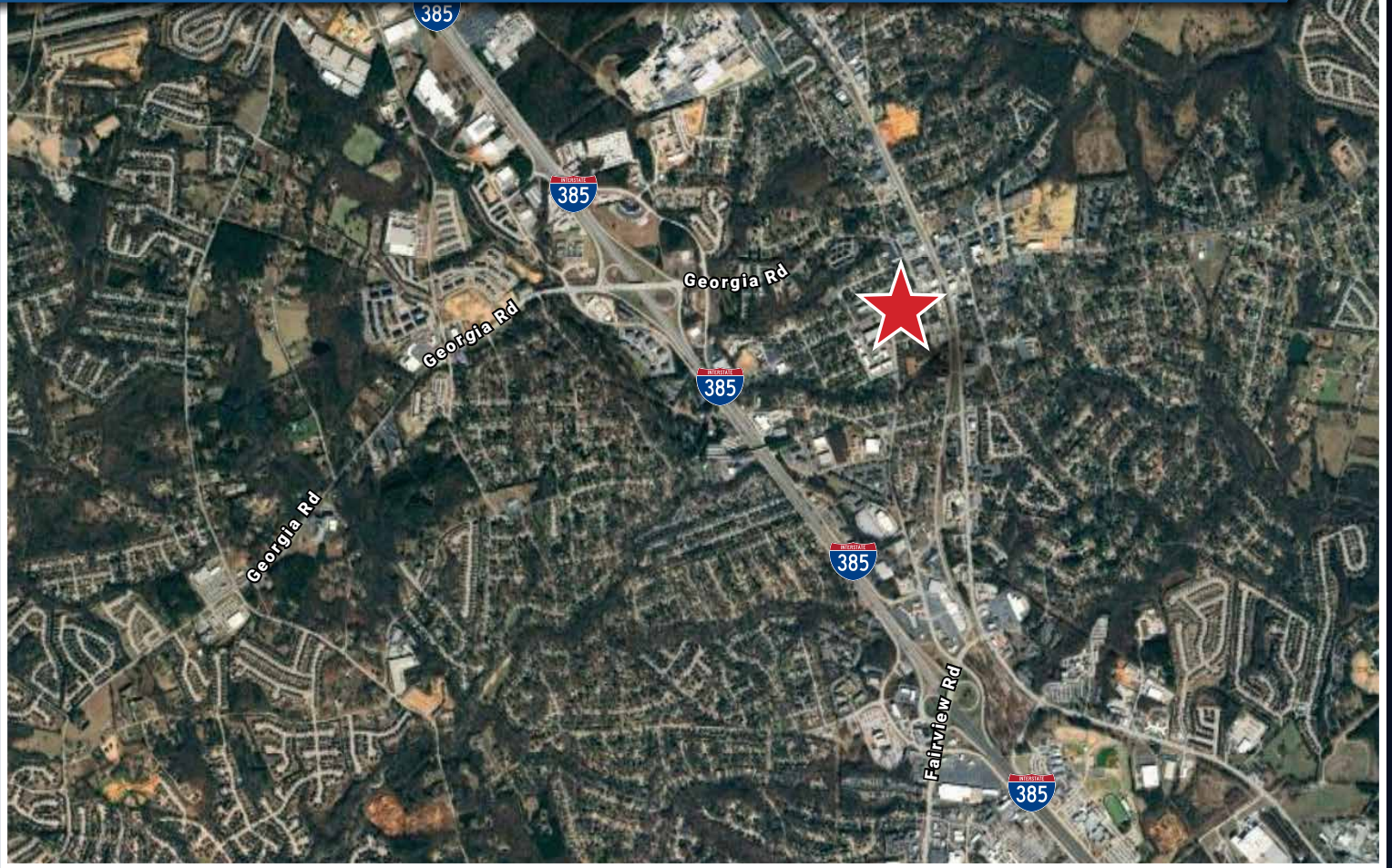
TAX MAP #0324000400121

SALE PRICE \$357,000



Jim Brown, CCIM
Commercial Sales & Leasing
864-303-3333
jimbrown@flagshipsc.com

301 W CURTIS STREET | SIMPSONVILLE, SC 29681



ZONED ID (INNOVATIVE DESIGN) | 2 BLOCKS FROM MAIN STREET SIMPSONVILLE



2023 Demographics

| | 1 Mile | 3 Miles | 5 Miles |
|--------------------------|----------|----------|----------|
| Population | 8,985 | 48,603 | 114,940 |
| Average HH Income | \$82,921 | \$98,693 | \$97,123 |
| Households | 3,795 | 18,561 | 43,714 |

Jim Brown, CCIM
 Commercial Sales & Leasing
 864-303-3333
 jimbrown@flagshipsc.com

