

# FOR LEASE

440 MONTICELLO

440 Monticello Avenue | Norfolk, VA 23510



S.L. NUSBAUM  
REALTY CO.

## Class A Office

### ONLY \$25.00 PSF!



**STEPHANIE SANKER, CCIM, SIOR**

Senior Vice President

O. 757.640.2290

[ssanker@slnusbaum.com](mailto:ssanker@slnusbaum.com)

**MICHAEL GOOD**

Senior Associate

O. 757.640.2217

[mgood@slnusbaum.com](mailto:mgood@slnusbaum.com)

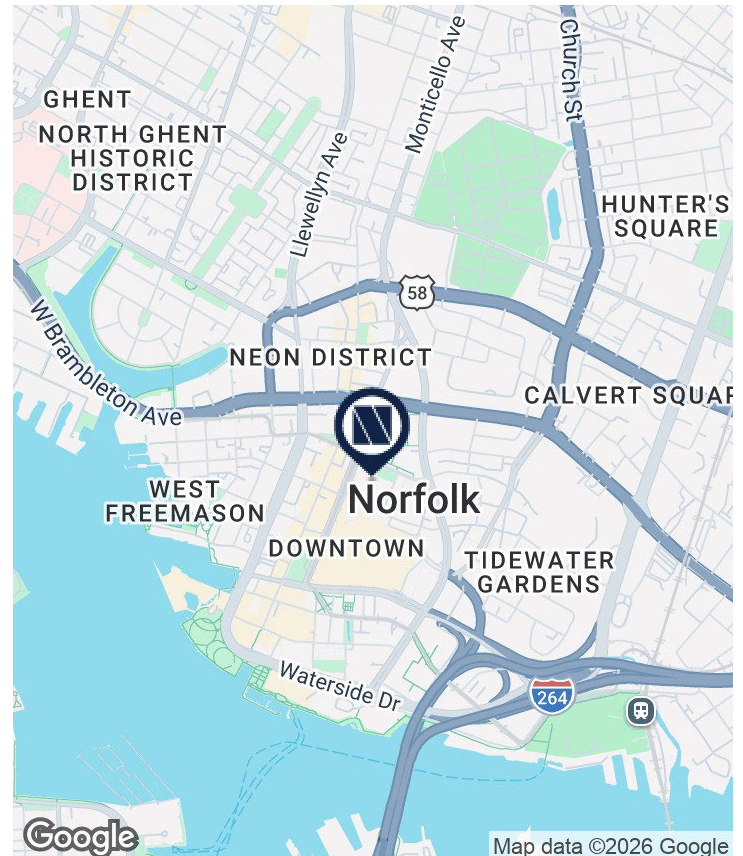
# PROPERTY SUMMARY

440 MONTICELLO

440 Monticello Avenue | Norfolk, VA 23510



S.L. NUSBAUM  
REALTY CO.



## OFFERING SUMMARY

|               |                              |
|---------------|------------------------------|
| Lease Rate:   | \$25.00 SF/yr (Full Service) |
| Available SF: | 112,643 SF                   |
| Office Tower: | 22 stories, 255,000 SF       |
| Core Factor:  | 19%                          |
| Retail:       | 550,000 SF on Monticello     |
| Parking:      | 1,859 Spaces in 2 Garages    |
| Residential:  | 121 Luxury Apartments        |

[Click Here to View Property Video](#)

## PROPERTY OVERVIEW

440 Monticello, a mixed-use development built in 2010, is located in downtown Norfolk in the five acre block bounded by Monticello Avenue, Freemason Street, Charlotte Street, and Bank Street. The LEED Gold Certified office tower is located at the northwest corner of the development at the intersection of Monticello Avenue and Charlotte Street.

## PROPERTY HIGHLIGHTS

- Newest office tower in Downtown Norfolk
- Walking distance to Neon District, Chrysler Hall, SCOPE, and numerous restaurants and apartments
- Immediate access to I-264 and I-464
- Most efficient parking garage in Downtown Norfolk with limited columns making travel easy for tenants and visitors
- Building serviced by two separate electrical power circuits for automatic power supply in an outage
- Building conference facility with seating up to 50 available to all office tenants
- LEED Gold Certified by the U.S. Green Building Council
- Complimentary private shuttle service for all tenants
- 15th Floor is Plug and Play

# PROPERTY DETAILS

440 MONTICELLO

440 Monticello Avenue | Norfolk, VA 23510



S.L. NUSBAUM  
REALTY CO.



| SPACES     | SPACE SIZE | LEASE RATE    |
|------------|------------|---------------|
| 11th Floor | 24,500 SF  | \$25.00 SF/yr |
| Suite 1225 | 7,412 SF   | \$25.00 SF/yr |
| Suite 1250 | 10,754 SF  | \$25.00 SF/yr |
| 14th Floor | 24,500 SF  | \$25.00 SF/yr |
| 15th Floor | 24,500 SF  | \$25.00 SF/yr |
| 18th Floor | 8,470 SF   | \$25.00 SF/yr |
| 19th Floor | 10,747 SF  | \$25.00 SF/yr |
| 20th Floor | 1,760 SF   | \$25.00 SF/yr |

## OFFICE TENANTS

- S.L. Nusbaum Realty Co.
- FORVIS
- Willcox & Savage, P.C.
- Wealthway Financial Advisors
- Burgess & Niple
- UBS Financial Services Inc.
- RecoveryTrek
- PBMares
- Sampling Associates International

## RETAIL TENANTS

- Buffalo Wild Wings
- Sushi King
- 7-Eleven
- Saffron Indian Bistro
- The Twisted Crab
- Cork & Kettle Wine and Tea Bar
- Avenue Kitchen & Cocktails
- Amale Tre Focacceria

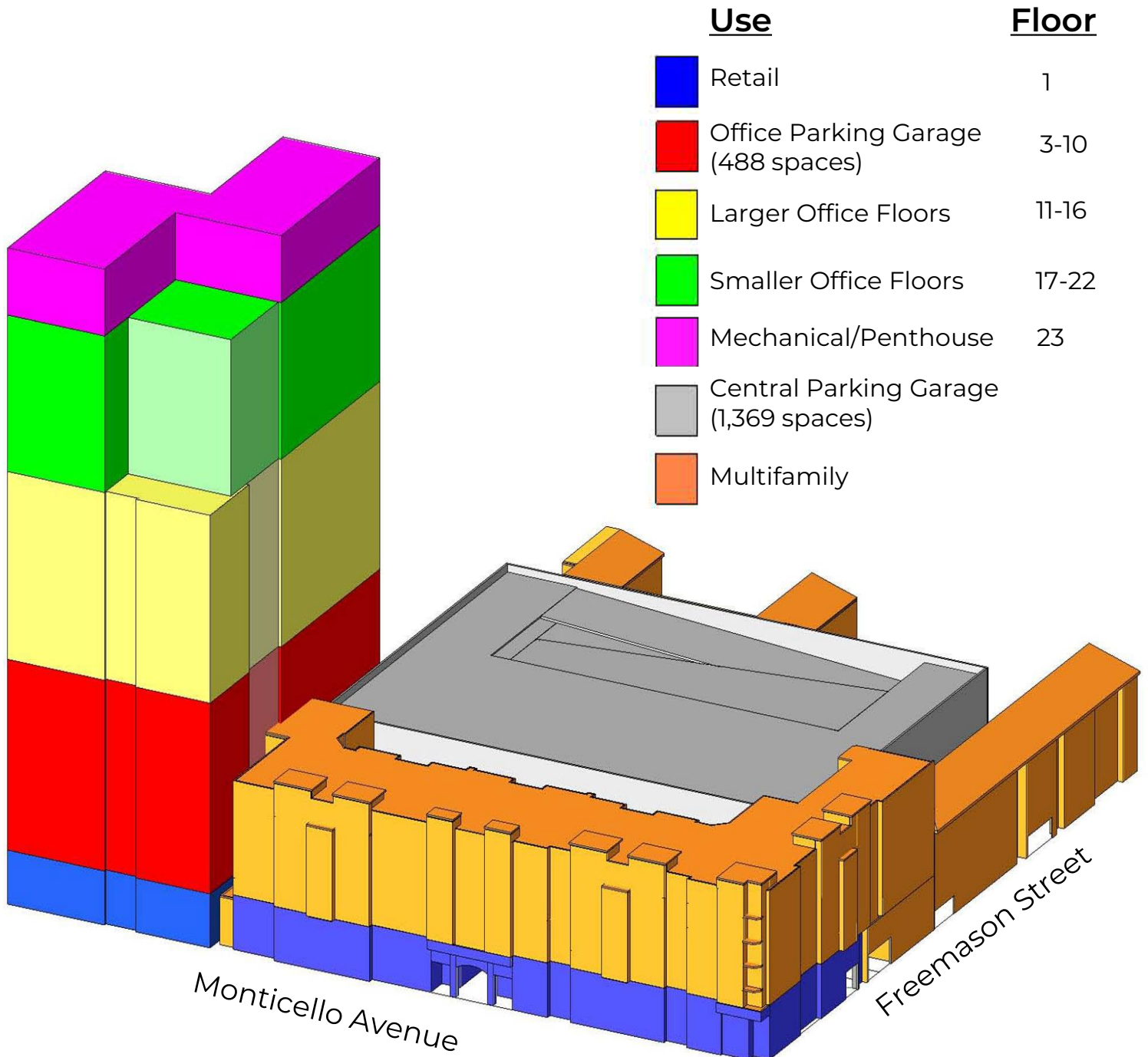
# STACKING PLAN

440 MONTICELLO

440 Monticello Avenue | Norfolk, VA 23510



S.L. NUSBAUM  
REALTY CO.



# FLOOR PLATES

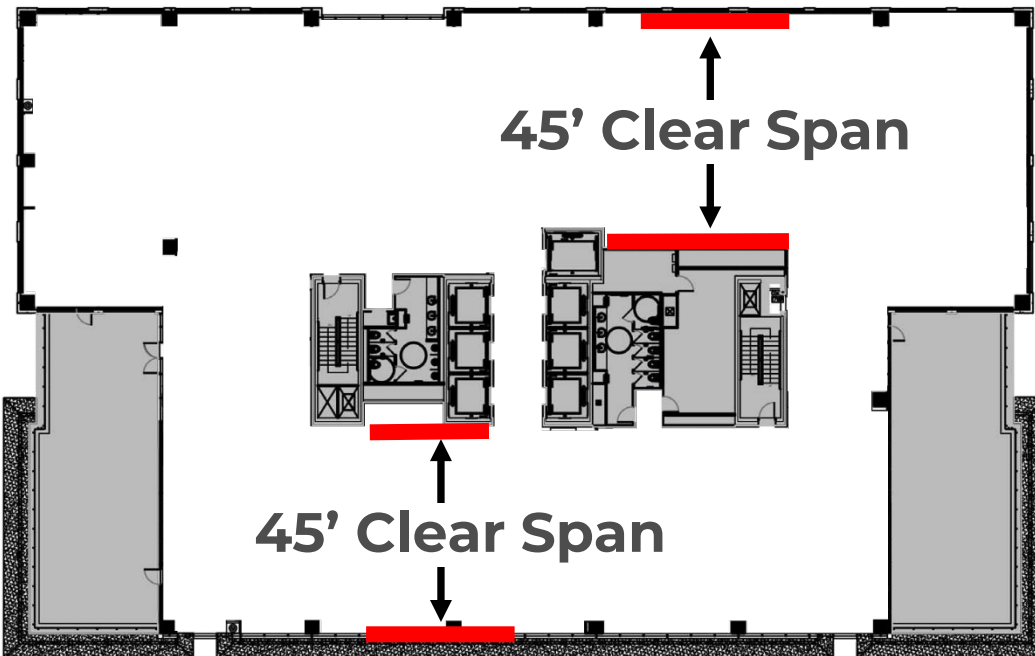
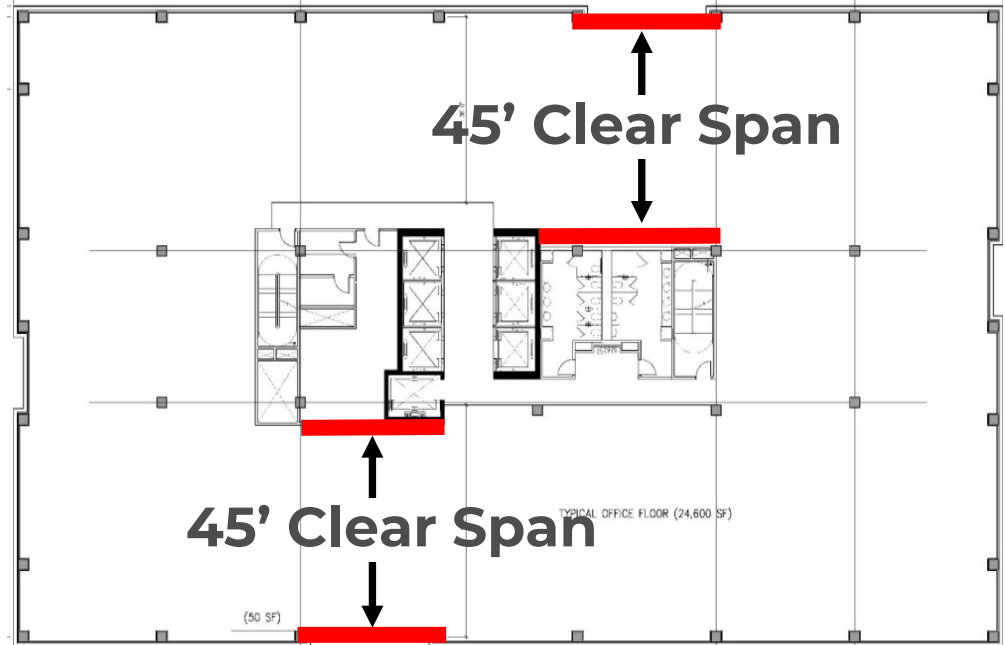
440 MONTICELLO

440 Monticello Avenue | Norfolk, VA 23510



S.L. NUSBAUM  
REALTY CO.

**FLOORS 11 – 16**  
24,500 SF Floor Plate  
(123' x 200')



**FLOORS 17 – 22**  
21,000 SF Floor Plate  
6 corner offices

# AIR QUALITY

440 MONTICELLO

440 Monticello Avenue | Norfolk, VA 23510

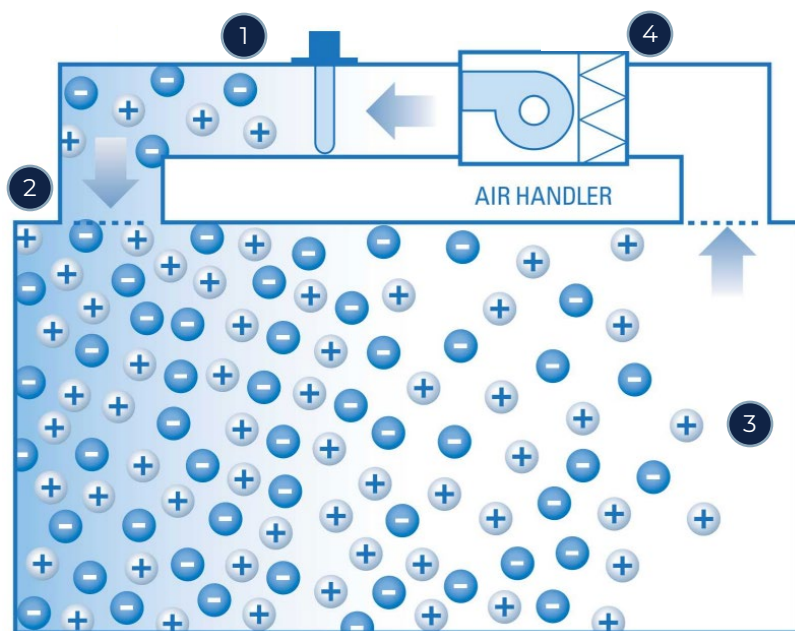


S.L. NUSBAUM  
REALTY CO.

440 Monticello provides a safe environment with which to conduct your business. The central air handling units on floors 11 – 22 each supply a combination of recirculated building return air and code-required outside air to all occupied spaces, exchanging the air multiple times per hour, during all occupied hours. The units are also equipped with CDC recommended MERV-13 filters.

To further protect occupant health and building resiliency, Needlepoint Bipolar Ionization devices have now been integrated into each of the air handling units throughout all tenant spaces and the building common area. The technology utilizes specialized tubes that take oxygen molecules from the air and convert them into charged atoms that then cluster around microparticules, surrounding and deactivating harmful substances like airborne mold, bacteria, allergens, and viruses. They also attach to expelled breath droplets and dust particles that can transport viruses, enlarging them so they're more easily caught in filters. It is an active process that provides continuous disinfection. The technology has proven effective against SARS and has become a constant in our designs of public school buildings across the state of Virginia.

## FILTRATION PROCESS



**1.** Specialized tubes take oxygen molecules from the air and convert them into charged atoms.

**2.** The charged atoms cluster around microparticles.

**3.** The atoms deactivate harmful substances like airborne mold, bacteria, allergens, and viruses.

**4.** The atoms also attach to expelled breath droplets and dust particles that can transport viruses, enlarging them so they're more easily caught in filters.

# SHUTTLE SERVICE

440 MONTICELLO

440 Monticello Avenue | Norfolk, VA 23510



S.L. NUSBAUM  
REALTY CO.

440 Monticello offers a complimentary private shuttle service that provides rides to and from locations along sections of Monticello Avenue, City Hall Avenue, Granby Street, and Waterside Drive.



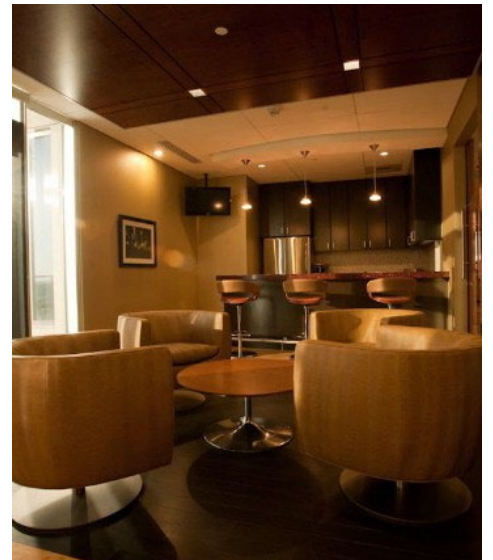
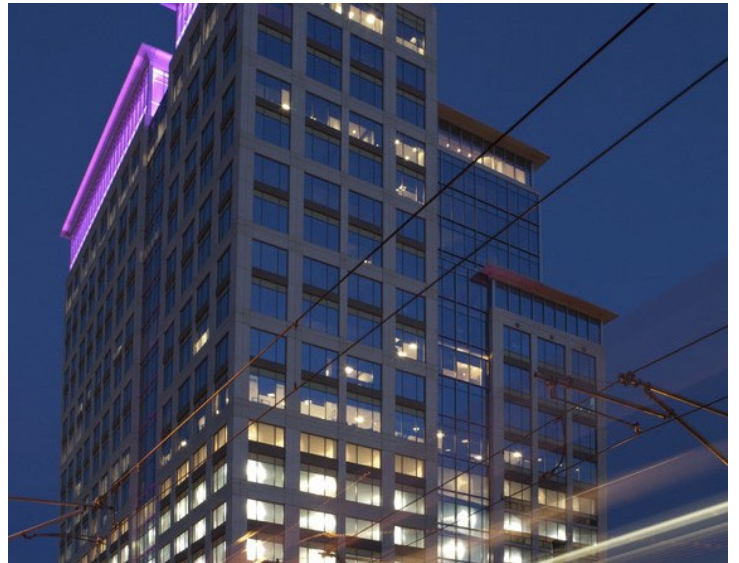
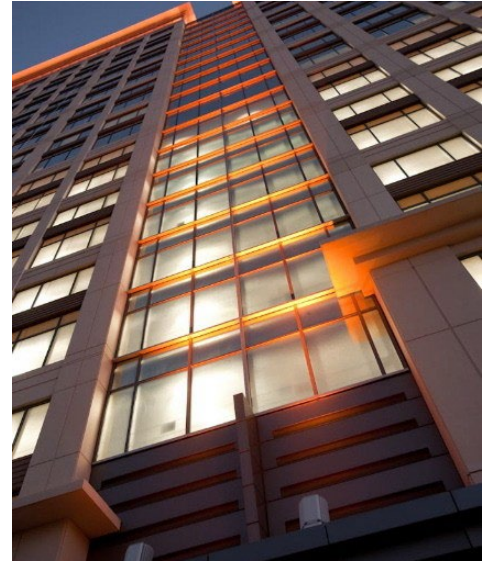
# BUILDING PHOTOS

440 MONTICELLO

440 Monticello Avenue | Norfolk, VA 23510



S.L. NUSBAUM  
REALTY CO.



# 14TH FLOOR PHOTOS

440 MONTICELLO

440 Monticello Avenue | Norfolk, VA 23510



S.L. NUSBAUM  
REALTY CO.



# 15TH FLOOR PHOTOS

440 MONTICELLO

440 Monticello Avenue | Norfolk, VA 23510



S.L. NUSBAUM  
REALTY CO.



# AERIAL VIEW

440 MONTICELLO

440 Monticello Avenue | Norfolk, VA 23510



S.L. NUSBAUM  
REALTY CO.



Aerial View from Northwest



Rooftop terrace available to all office tenants upon request

# LIGHT RAIL ROUTE

440 MONTICELLO

440 Monticello Avenue | Norfolk, VA 23510



S.L. NUSBAUM  
REALTY CO.

## Norfolk CBD Station Locations



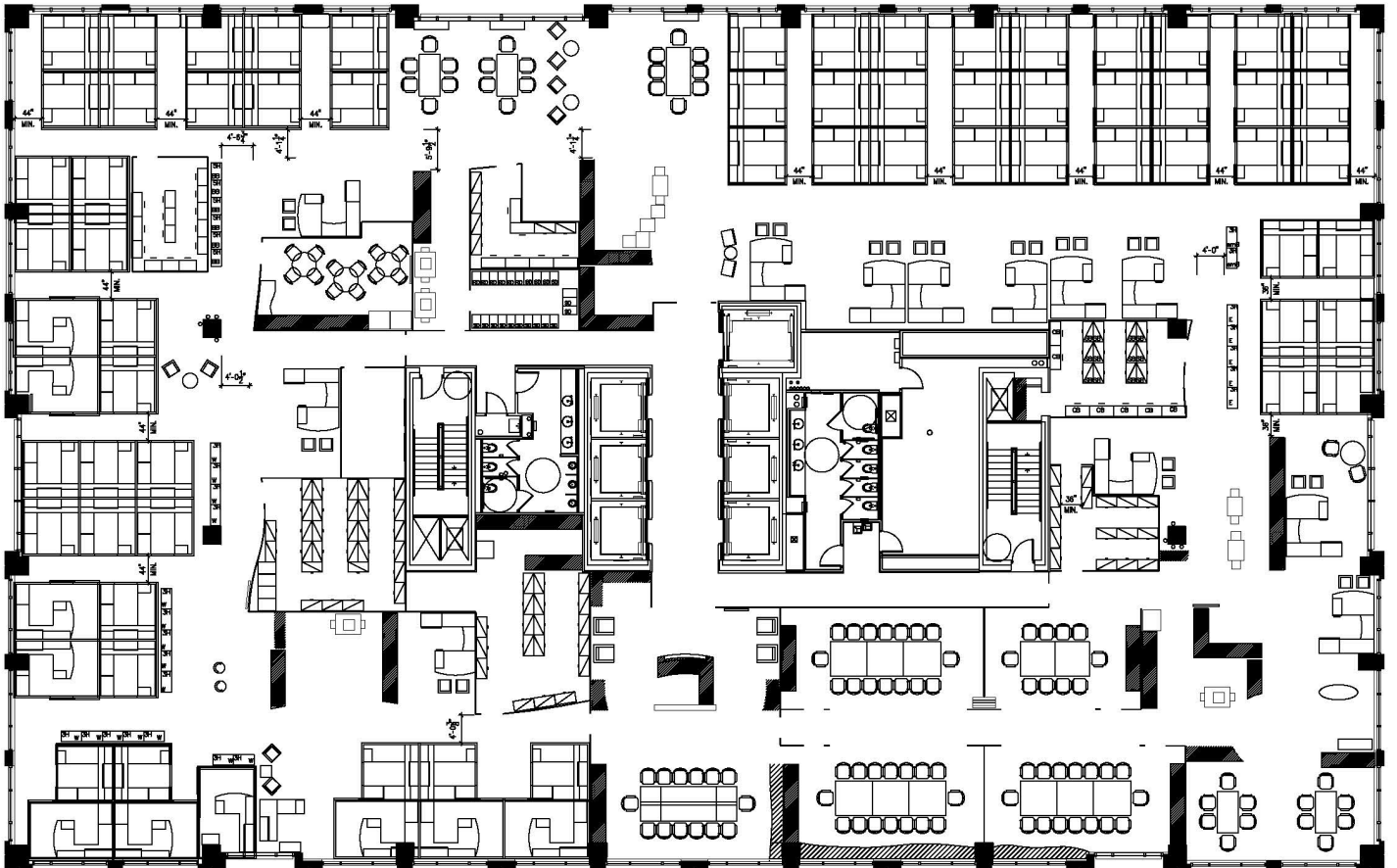
# ELEVENTH FLOOR

440 MONTICELLO

440 Monticello Avenue | Norfolk, VA 23510



S.L. NUSBAUM  
REALTY CO.



**24,500 RSF Available  
(Full Floor)**

# TWELFTH FLOOR

440 MONTICELLO

440 Monticello Avenue | Norfolk, VA 23510



S.L. NUSBAUM  
REALTY CO.

**SUITE 1225**  
**7,412 RSF**

**SUITE 1250**  
**10,754 RSF**



**18,166 RSF Available**

# FOURTEENTH FLOOR

440 MONTICELLO

440 Monticello Avenue | Norfolk, VA 23510



S.L. NUSBAUM  
REALTY CO.



**24,500 RSF Available  
(Full Floor)**

# FIFTEENTH FLOOR

440 MONTICELLO

440 Monticello Avenue | Norfolk, VA 23510



S.L. NUSBAUM  
REALTY CO.



**24,500 RSF Available  
(Full Floor)**

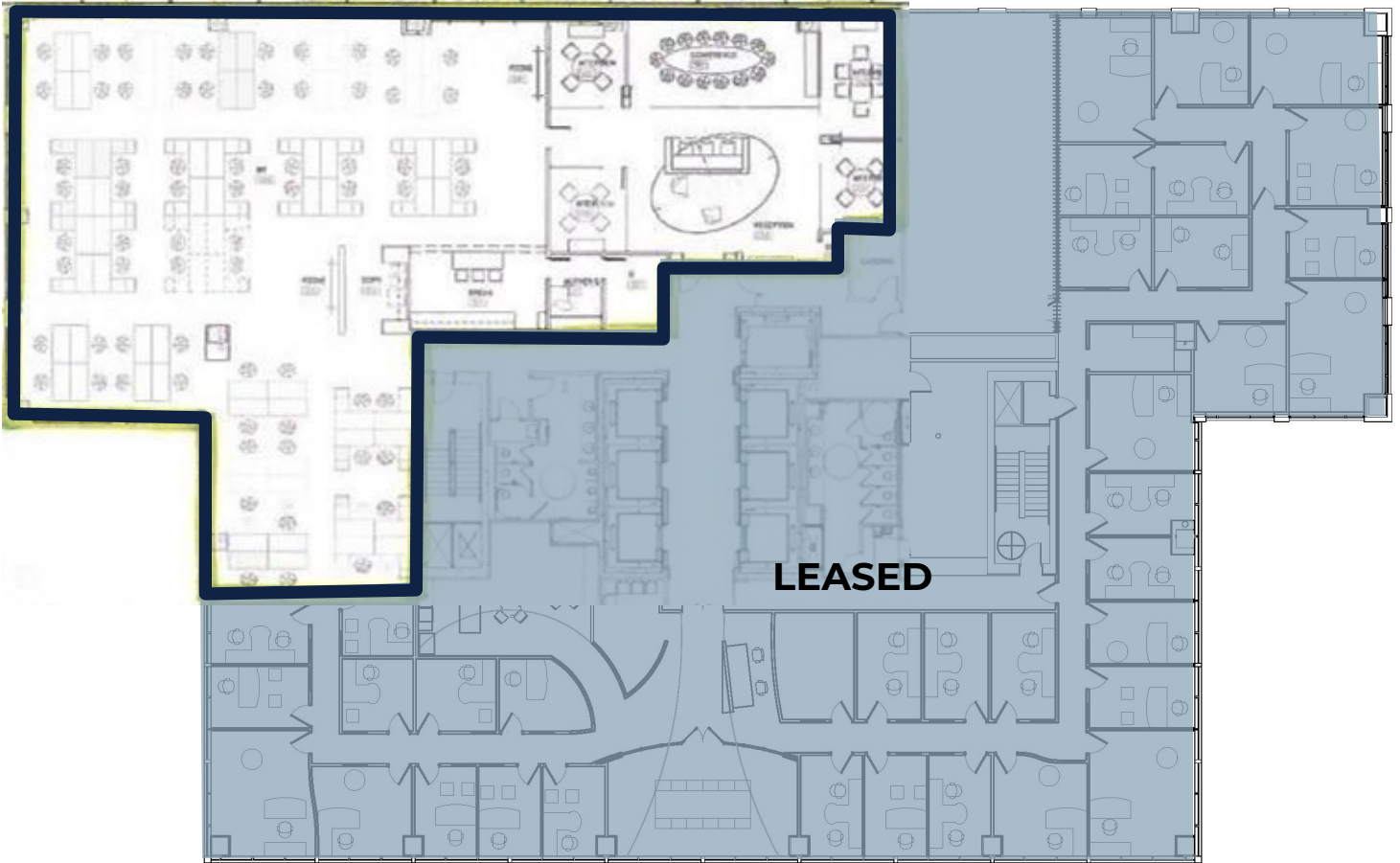
# EIGHTEENTH FLOOR

440 MONTICELLO

440 Monticello Avenue | Norfolk, VA 23510



S.L. NUSBAUM  
REALTY CO.



**8,470 RSF Available**

# NINETEENTH FLOOR

440 MONTICELLO

440 Monticello Avenue | Norfolk, VA 23510



S.L. NUSBAUM  
REALTY CO.



**10,747 RSF Available**

# TWENTIETH FLOOR

440 MONTICELLO

440 Monticello Avenue | Norfolk, VA 23510



S.L. NUSBAUM  
REALTY CO.



**1,760 RSF Available**

## CONTACT INFORMATION

440 MONTICELLO

440 Monticello Avenue | Norfolk, VA 23510



S.L. NUSBAUM

REALTY CO.

### STEPHANIE SANKER, CCIM, SIOR

Senior Vice President

O. 757.640.2290

[ssanker@slnusbaum.com](mailto:ssanker@slnusbaum.com)

### MICHAEL GOOD

Senior Associate

O. 757.640.2217

C. 757.646.0525

[mgood@slnusbaum.com](mailto:mgood@slnusbaum.com)

### COMMITMENT. INTEGRITY. EXCELLENCE. SINCE 1906.

Serving the Southeast and Mid-Atlantic region for well over a century, S.L. Nusbaum Realty Co. continues to provide a comprehensive experience for our clients and customers in all aspects of the multifamily and commercial real estate industry.

[CLICK HERE TO LEARN MORE](#)

### DISCLAIMER:

No warranty or representation, expressed or implied, is made to the accuracy or completeness of the information contained herein, and same is submitted subject to errors, omissions, change of price, rental or other conditions, withdrawal without notice, and to any special listing conditions imposed by the property owner(s). As applicable, we make no representation as to the condition of the property (or properties) in question or the property's (or properties') compliance with applicable laws, regulations, and codes.