

8080  
— NCX —



 **FORGE**  
COMMERCIAL

# 8080 — NCX —



CENTRAL DALLAS LOCATION



Q3 2025 RENOVATIONS



CONFERENCE FACILITY



FITNESS CENTER WITH LOCKER ROOMS



CAFÉ WITH GRAB 'N GO



MOTHER'S ROOM



BUILDING SIGNAGE AVAILABLE



FLOOR-TO-CEILING GLASS WINDOWS



4/1,000 SF PARKING



100% STRUCTURED PARKING



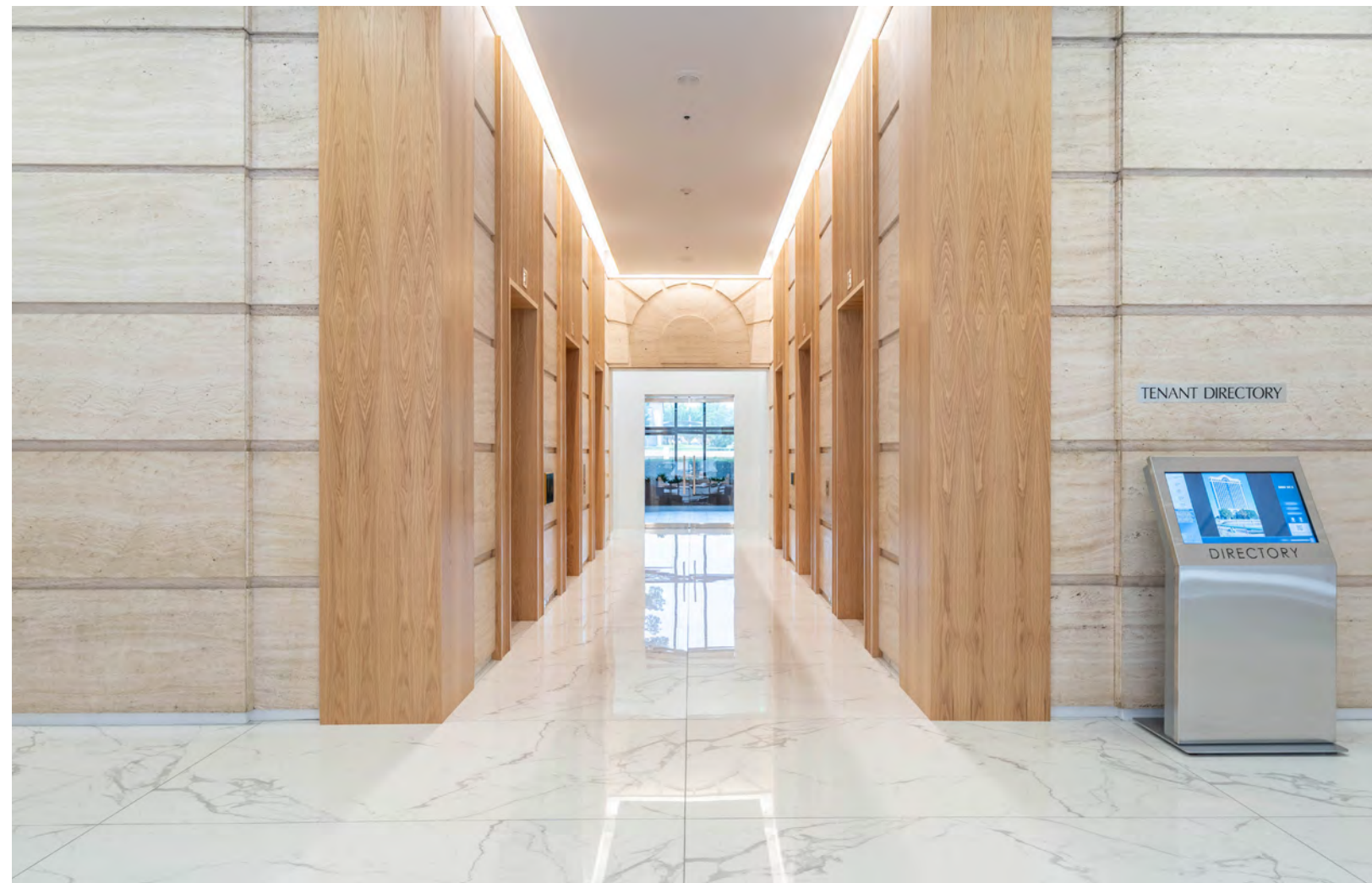
24/7 SECURITY



ON-SITE MANAGEMENT & ENGINEERING



LOBBY



40-PERSON TRAINING ROOM



PRE-FUNCTION



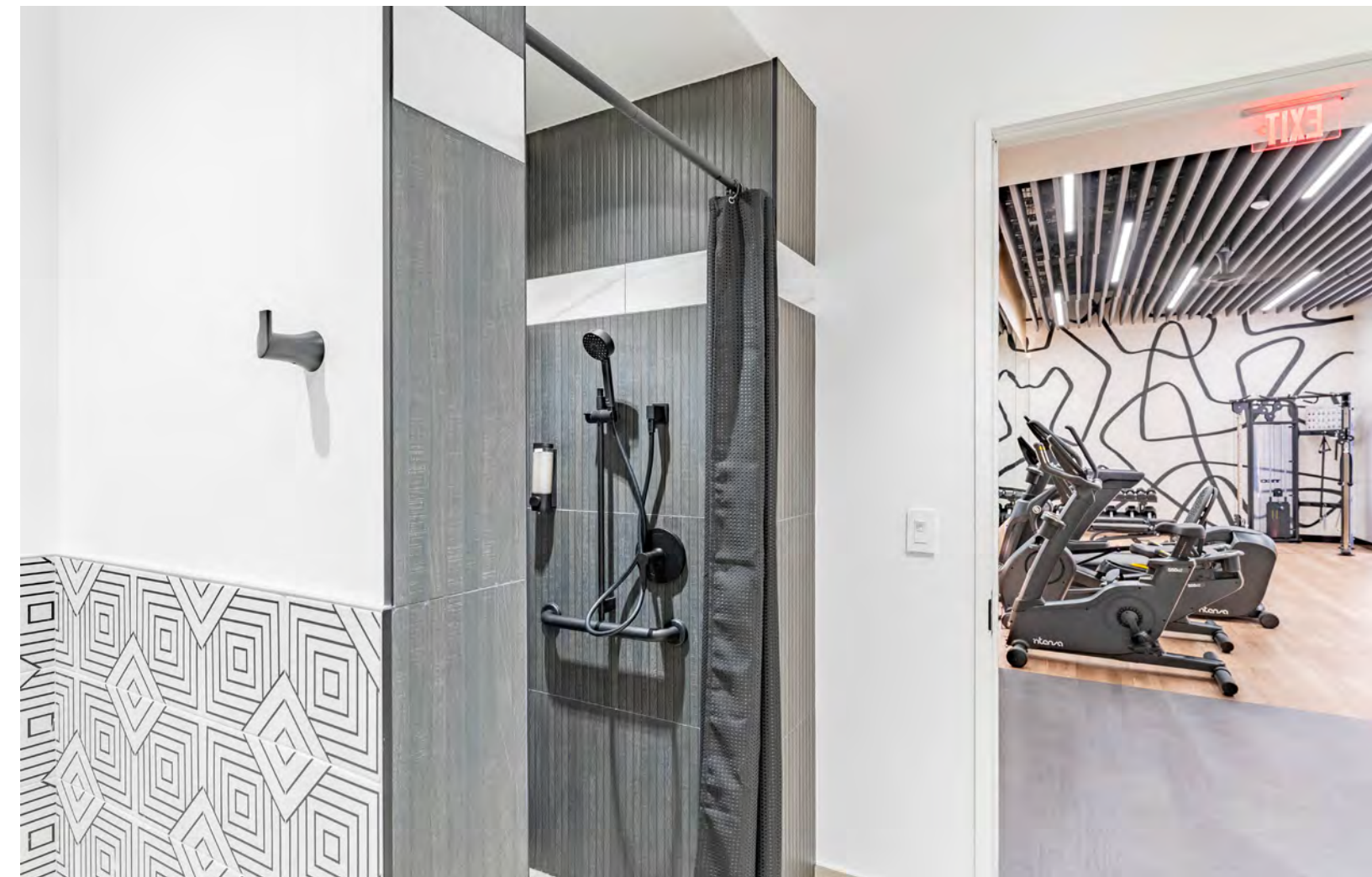
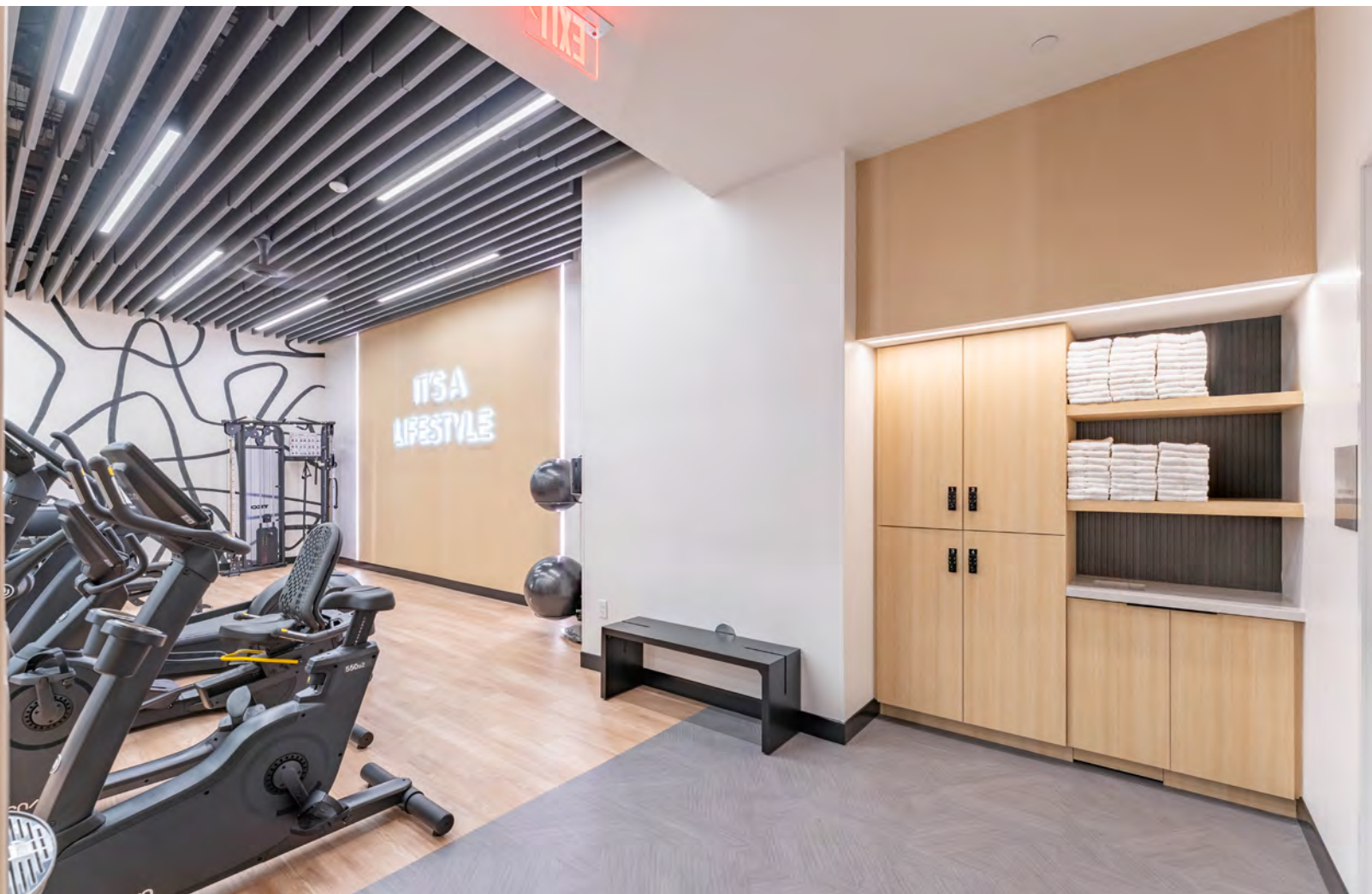
BOARDROOM



CAFÉ



FITNESS CENTER



# THE *PULSE* OF DALLAS

8080 NCX sits steps from NorthPark Center and The Shops at Park Lane, offering unmatched access to dining, shopping, fitness, and entertainment. With seamless connectivity to Preston Center, Uptown, Downtown, and beyond, tenants are surrounded by the best of Dallas.

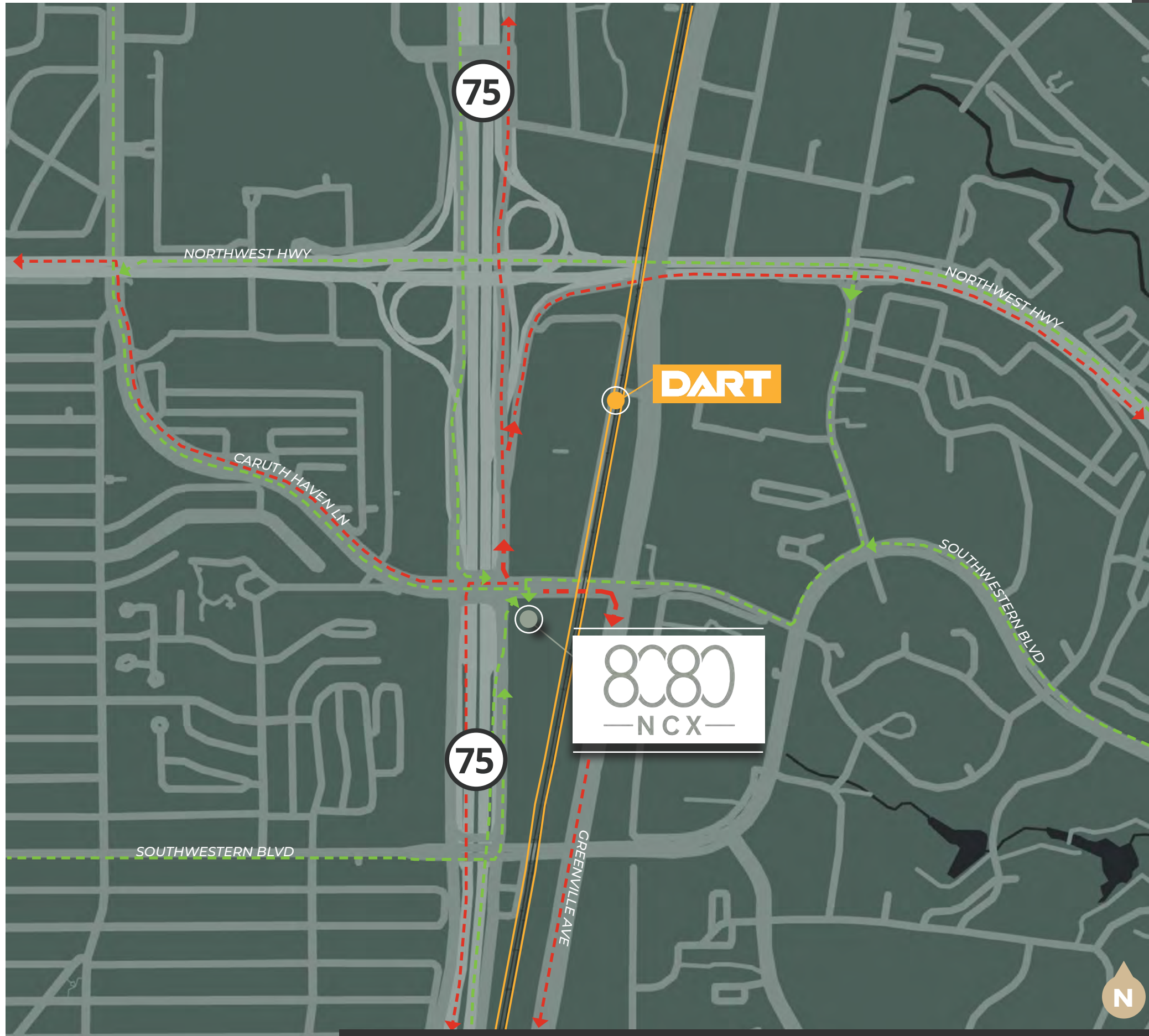
**100+**  
DINING OPTIONS

**5**  
HOTELS

**100+**  
RETAIL OPTIONS



# NCX MEETS CARUTH



- Excellent accessibility to North Central Expy (US-75), Caruth Haven Ln, Northwest Hwy, and Greenville Ave
- Walking distance to 20+ dining, retail, and hotel options, including NorthPark Center
- Close proximity to premier Dallas neighborhoods—Park Cities, Preston Hollow, Knox/Henderson, Lakewood, and Lake Highlands

# IN THE NEIGHBORHOOD



PRESTON CENTER

PRESTON HOLLOW

8080 NCX

NORTH PARK CENTER

PARK CITIES

1 Min to  
Park Cities

2 Min to  
NorthPark Center

5 Min to  
Preston Center

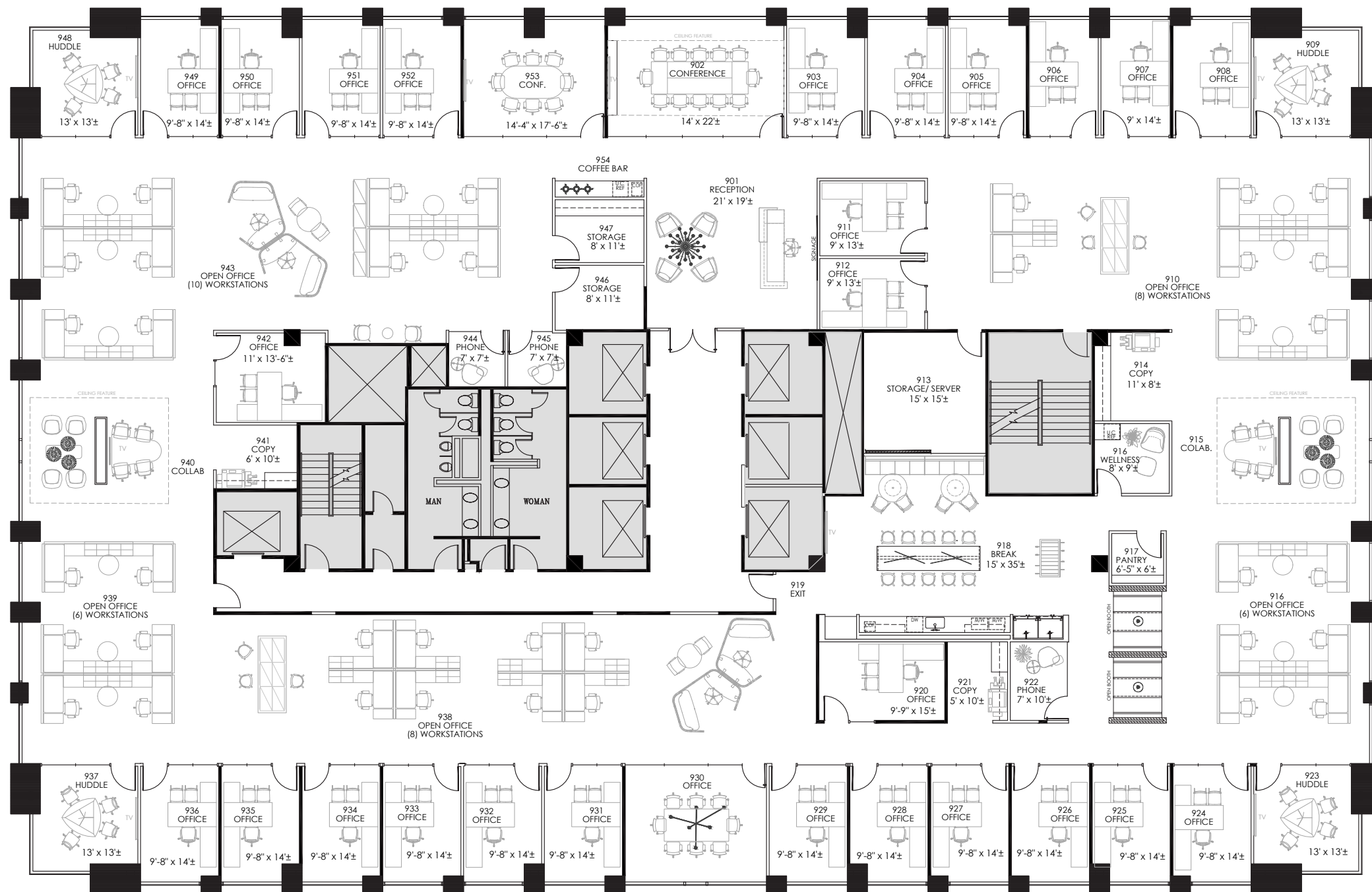
5 Min to  
Preston Hollow

6 Min to  
Knox/Henderson

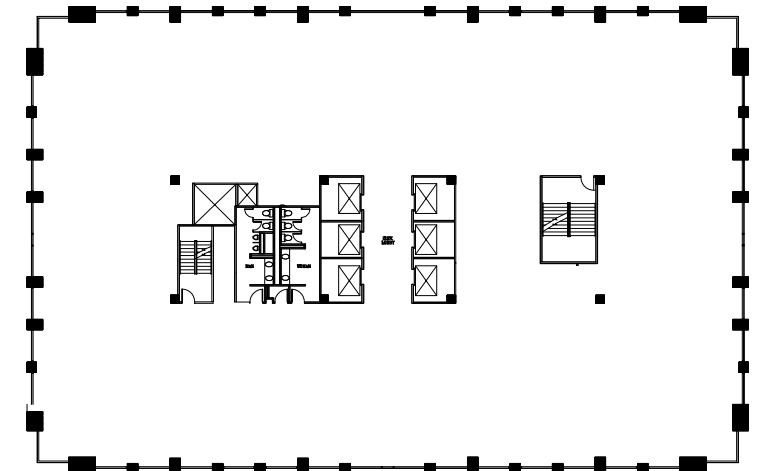
7 Min to  
Snider Plaza

# EFFICIENCY MEETS COLLABORATION

## Sample Layout



TYPICAL FLOORPLATE  
+/- 17,000 RSF



# 8080 — NCX —

## FOR LEASING INFORMATION

**TAYLOR LYNCH**

972.834.3339

[tlynch@forgecommercial.com](mailto:tlynch@forgecommercial.com)

**GRANT SUMNER**

214.244.6972

[gsumner@forgecommercial.com](mailto:gsumner@forgecommercial.com)

**DANIEL DEWEESE**

214.870.5834

[ddeweese@forgecommercial.com](mailto:ddeweese@forgecommercial.com)



**FORGE**  
COMMERCIAL