



VENTURE CORINTH PARK-FREESTANDING BLDG+SITE FOR LEASE

214.378.1212

2003 PARK AVE & 1837 CORINTH ST
DALLAS, TX

BENJAMIN HINES
BHINES@VENTUREDFW.COM

MADISON ROBERSON
MROBERSON@VENTUREDFW.COM

LOCATION

2003 PARK AVE & 1837 CORINTH ST

SIZE

LAND ±1 AC **BUILDING** ±11,869 SF

AVAILABLE SPACES

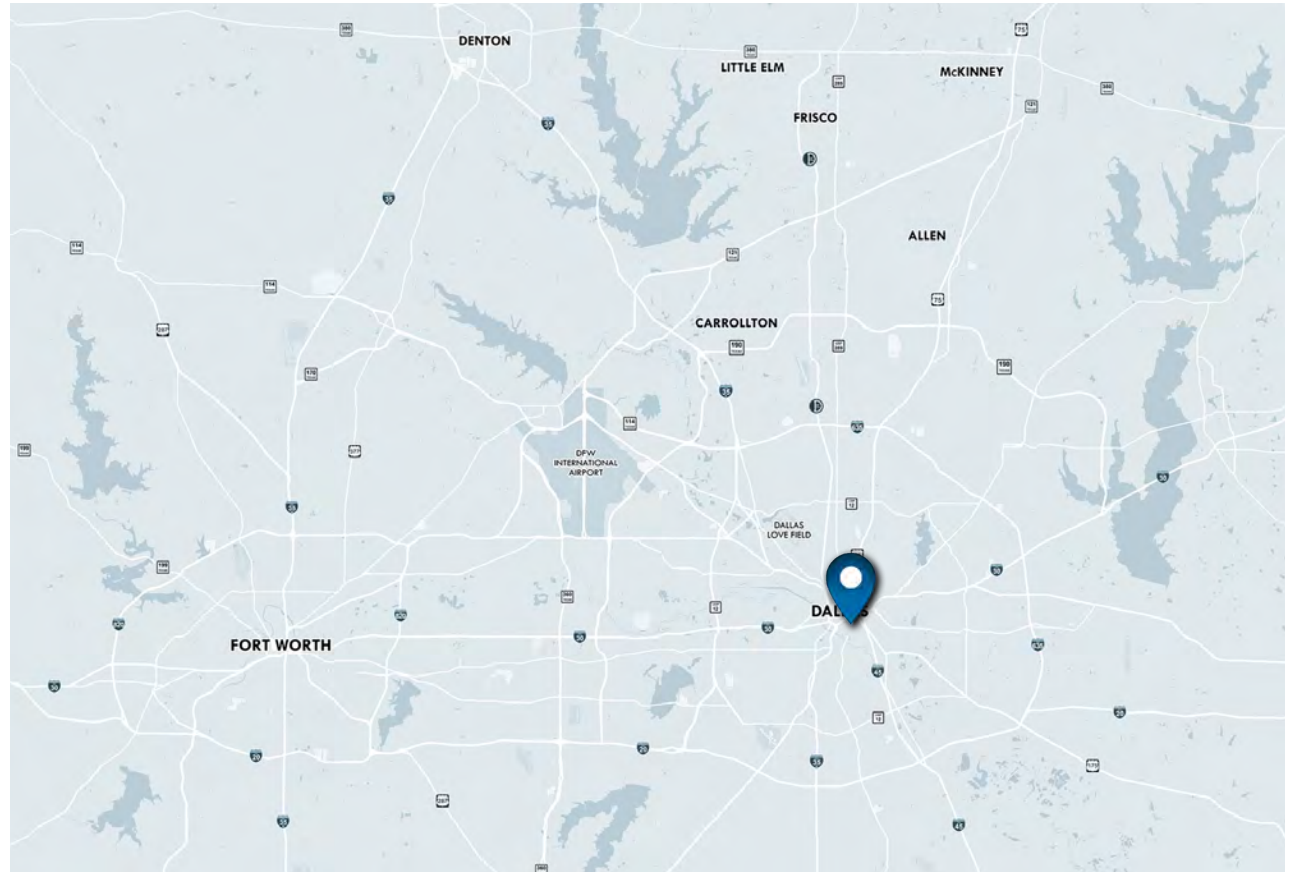
BUILDING + ADJACENT SITE

TRAFFIC COUNTS

I-30 **I-45**
154,251 VPD 194,353 VPD

PROPERTY HIGHLIGHTS

- ★ **CORNER VISIBILITY AT CORINTH & PARK AVE WITH UNMATCHED STREET PRESENCE**
- ★ **MASSIVE CURB APPEAL WITH ROLL-UP DOORS, BRICK FACADE AND INDUSTRIAL CHARACTER**
- ★ **MOMENTS FROM DOWNTOWN, DEEP ELLUM AND BISHOP ARTS**
- ★ **ADDITIONAL LAND OFFERS FLEXIBLE OUTDOOR ACTIVITY AND/OR PARKING OPTIONS**

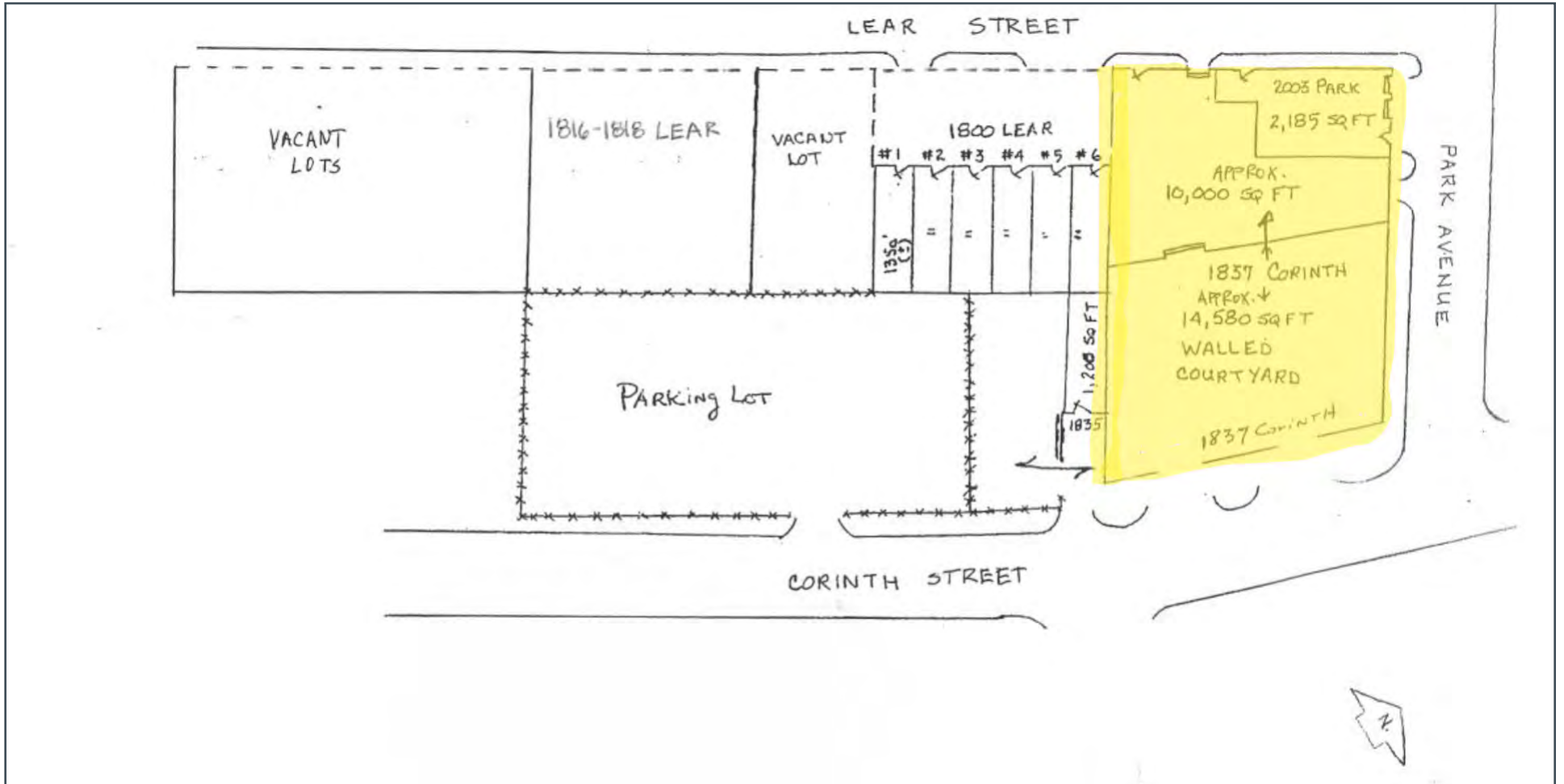


2025 DEMOGRAPHIC SUMMARY

	1 MILE	3 MILES	5 MILES
EST. POPULATION	12,680	165,199	396,079
EST. DAYTIME POPULATION	13,132	198,297	304,761
EST. AVG. HH INCOME	\$107,780	\$123,763	\$135,747

AREA ATTRACTIONS









8235 DOUGLAS AVE
SUITE 720
DALLAS, TEXAS 75225
T 214.378.1212
VENTUREDFW.COM

BENJAMIN HINES

Partner

214.378.1212

bhines@venturedfw.com

MADISON ROBERSON

Associate

214.378.1212

mroberson@venturedfw.com

LEASING | TENANT REPRESENTATION | LAND | INVESTMENT SALES | PROPERTY MANAGEMENT

*The information contained herein was obtained from sources deemed reliable; however, Venture Commercial Real Estate, LLC, makes no guarantees, warranties or representations as to the completeness or accuracy thereof. The presentation of this property is subject to errors; omissions; change of price, prior to sale or lease; or withdrawal without notice.

