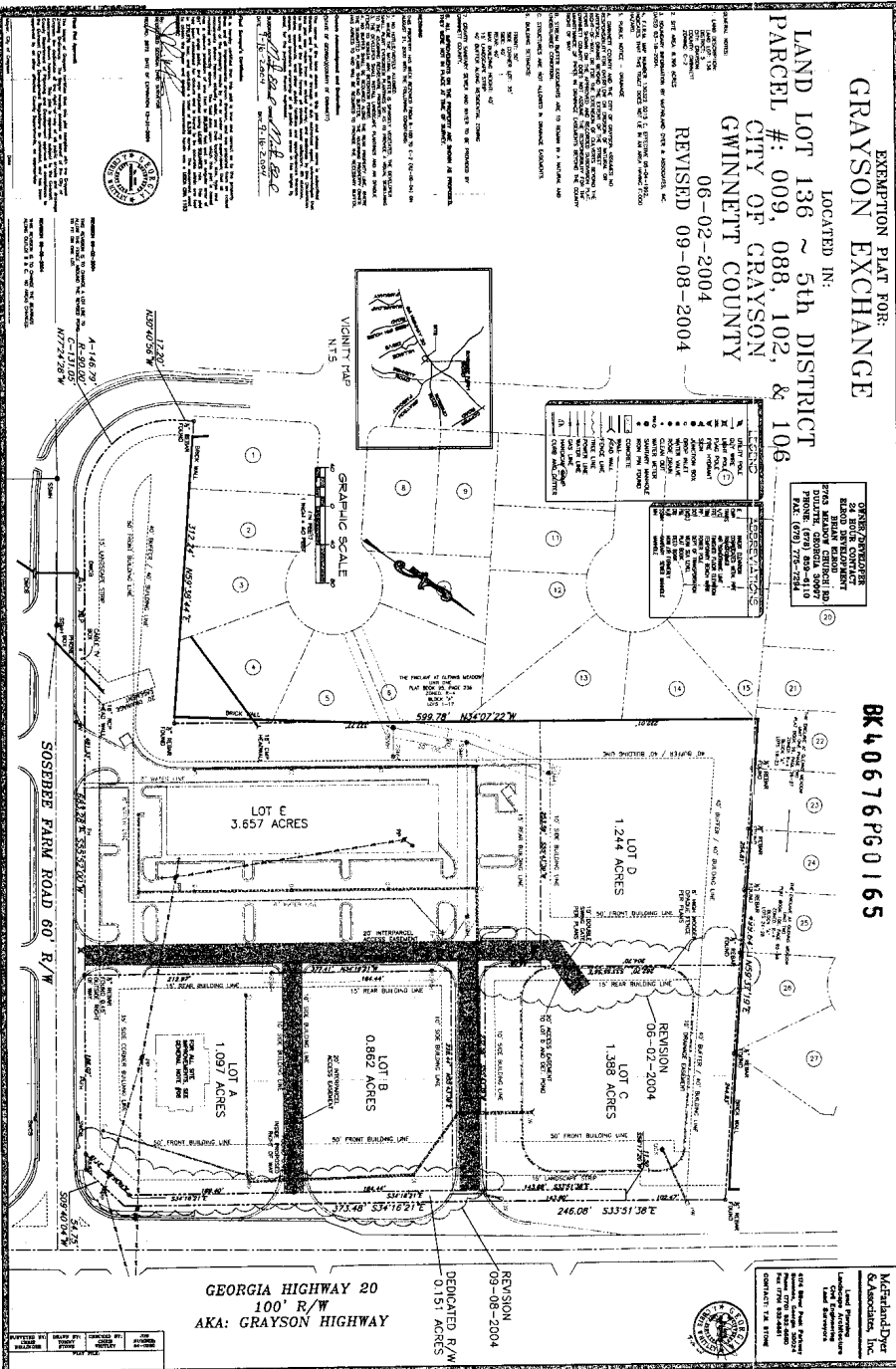


EXEMPTION PLAT FOR:
GRAYSON EXCHANGE

LOCATED IN:
LAND LOT 136 ~ 5th DISTRICT
PARCEL #: 009, 088, 102, & 106
CITY OF GRAYSON
GWINNETT COUNTY
REVISION 06-02-2004
REVISED 09-08-2004

BK 40676 PG 0165



McFarland Dyer
Surveyors, Inc.
1000 Peachtree Street, N.E.
Atlanta, Georgia 30309
Phone: (404) 525-1110
Fax: (404) 525-7244
www.mcfarlanddyer.com

REVISION
09-08-2004
DEPICTED R/W
0.151 ACRES

GEORGIA HIGHWAY 20
100' R/W
AKA: GRAYSON HIGHWAY

REVISION
06-02-2004
SOSEBBER FARM ROAD 60' R/W



NOTICE: THIS PLAT IS A PRELIMINARY PLAT AND IS NOT TO BE USED FOR ANY PURPOSES OTHER THAN TO IDENTIFY THE PROPERTY DESCRIBED HEREIN. THE SURVEYOR'S OFFICE SHALL NOT BE RESPONSIBLE FOR ANY ERRORS OR OMISSIONS IN THIS PLAT. THE SURVEYOR'S OFFICE SHALL NOT BE RESPONSIBLE FOR ANY ERRORS OR OMISSIONS IN THIS PLAT. THE SURVEYOR'S OFFICE SHALL NOT BE RESPONSIBLE FOR ANY ERRORS OR OMISSIONS IN THIS PLAT.