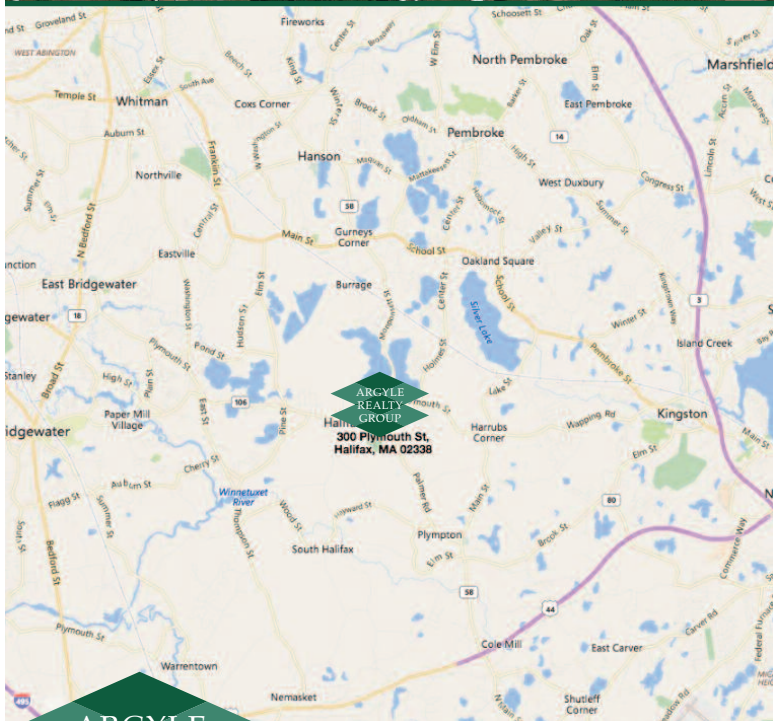


FOR LEASE

300 Plymouth Street - Halifax, MA 02338

6,262 SF (Subdividable)



- 6,262 SF (subdividable) available for lease
- Traffic Count - 24,000 cars per day
- Located at a signalized intersection shared with Walmart
- Surrounding retailers include Walmart, Stop & Shop, Cumberland Farms and Dunkin' Donuts
- GLA = 15,425 SF
- Parking Ratio - 5 spaces/1,000 SF

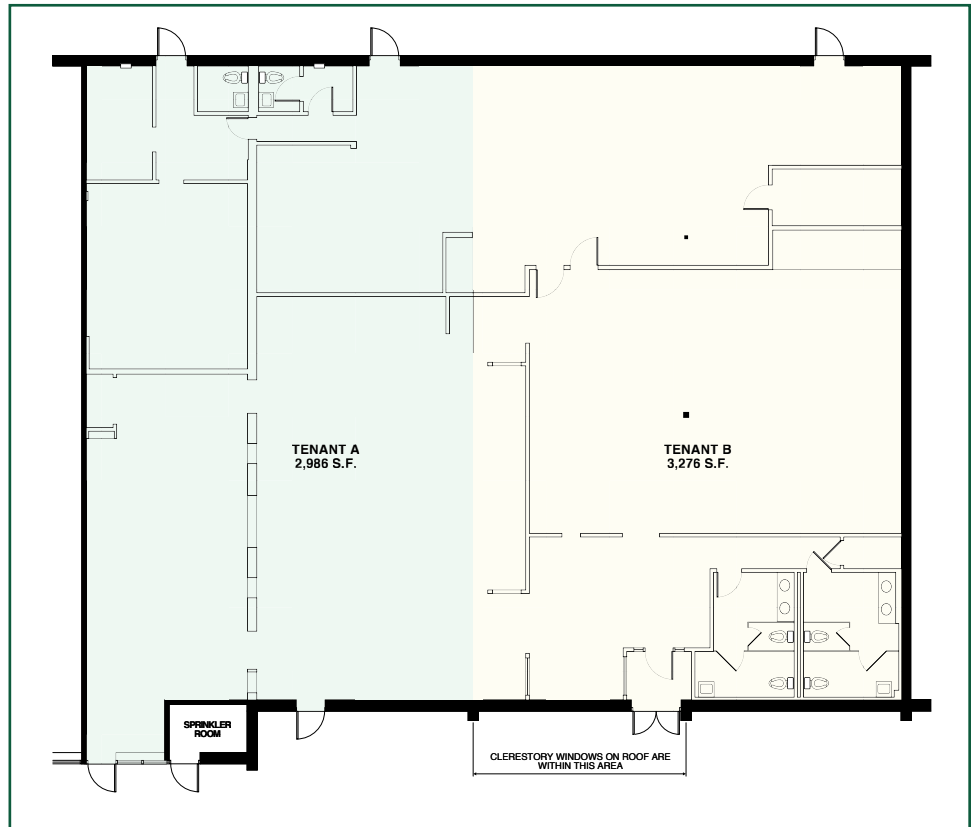


Argyle Realty Group, LLC - Daniel J. Connelly
 21 High Street, 305B - North Andover, MA 01845
 dan@argylerg.com - Mobile: 617.784.3239

FOR LEASE

300 Plymouth Street - Halifax, MA 02338

6,262 SF (Subdividable)



DEMOGRAPHICS	1 Miles	3 Miles	5 Miles
Population	2,211	13,172	37,218
Households	1,122	4,568	11,986
Average HH Income	\$78,257	\$97,303	\$104,759



Argyle Realty Group, LLC - Daniel J. Connelly
 21 High Street, 305B - North Andover, MA 01845
 dan@argylerg.com - Mobile: 617.784.3239

FOR LEASE
300 Plymouth Street - Halifax, MA 02338
6,262 SF (Subdividable)



The information has been obtained from sources believed to be reliable, however, no warranty or representation, expressed or implied, is made as to the accuracy of the information contained herein, and same is submitted subject to errors, omissions, change in price, rental or other conditions, or withdrawal without notice.



Argyle Realty Group, LLC - Daniel J. Connelly
21 High Street, 305B - North Andover, MA 01845
dan@argylerg.com - Mobile: 617.784.3239