



Office Units Available for Immediate Occupancy

65 Hanson Avenue

Kitchener, Ontario

Property Overview

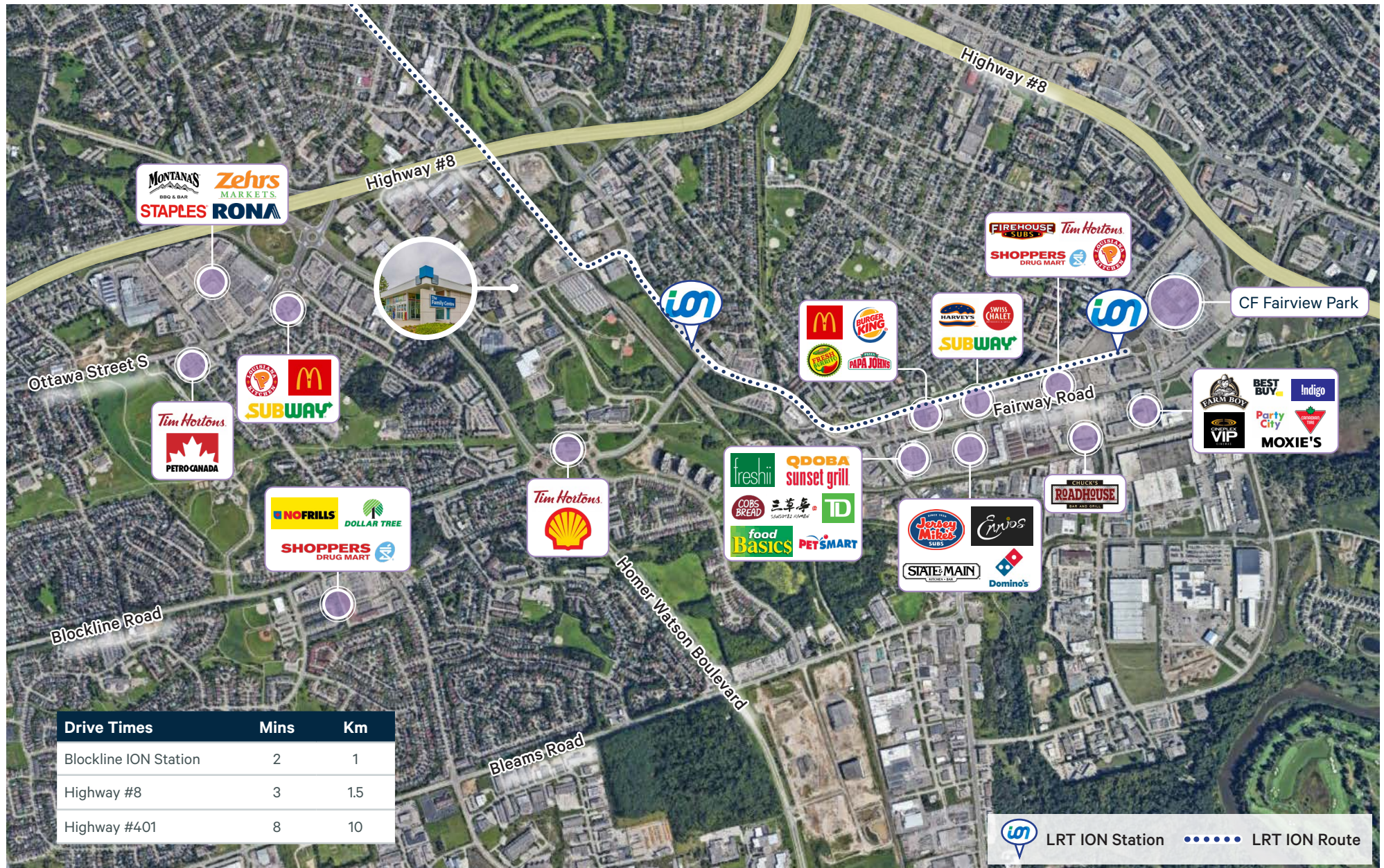
Now leasing multiple vacant office units at the Waterloo Region Family & Children's Services building located at 65 Hanson Avenue in Kitchener.

This location is perfect for anyone looking for convenience, with numerous bus stops as well as lunch and entertainment options nearby. The building's proximity to the Block Line ION Station and Highway #8 also provides excellent accessibility and connectivity to all surrounding areas.

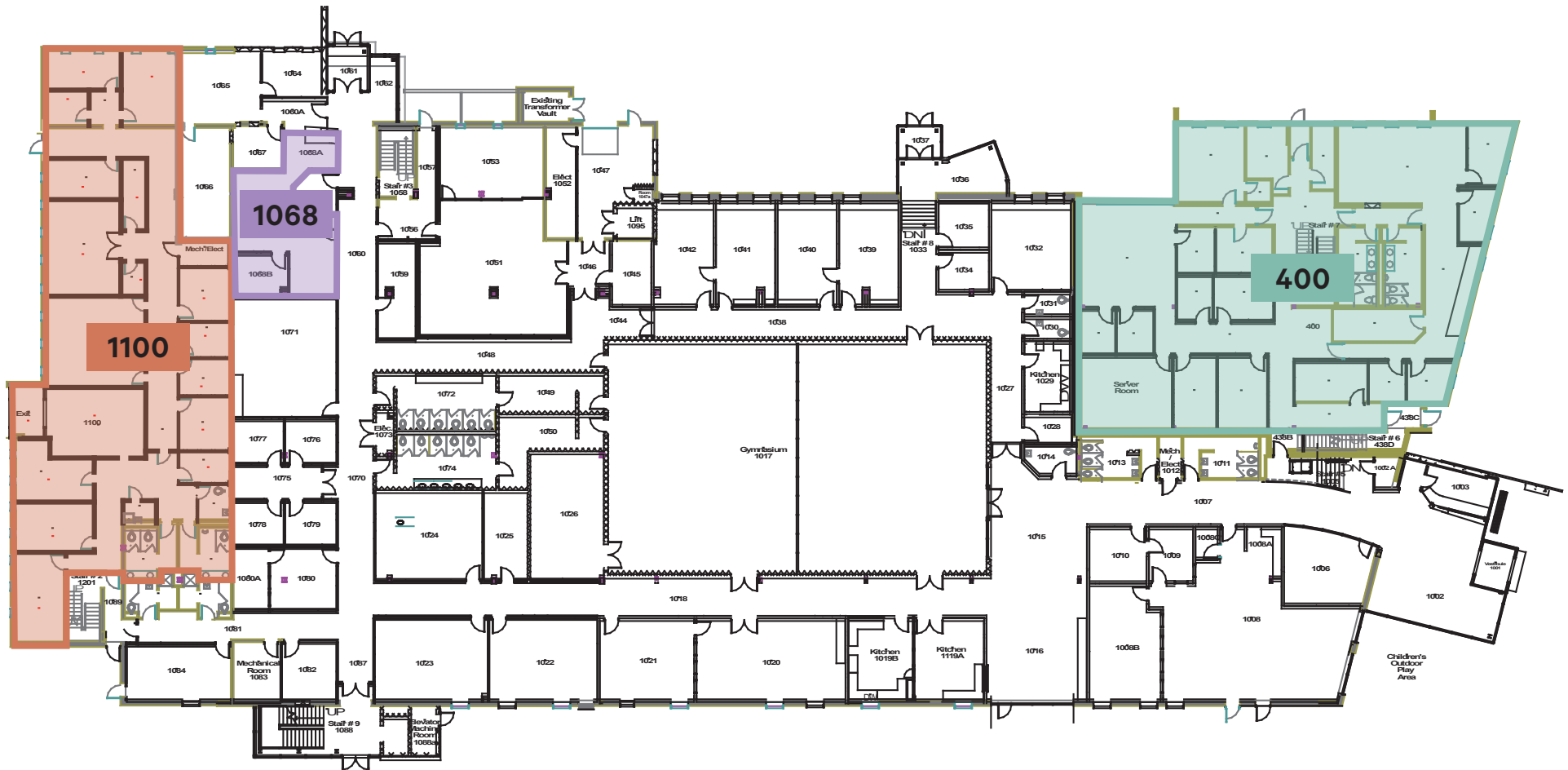
This property also offers additional meeting and recreational spaces for lease. Flexible workspace solutions are available through both short and long term lease terms. Please contact the listing team for additional details.



Surrounding Area

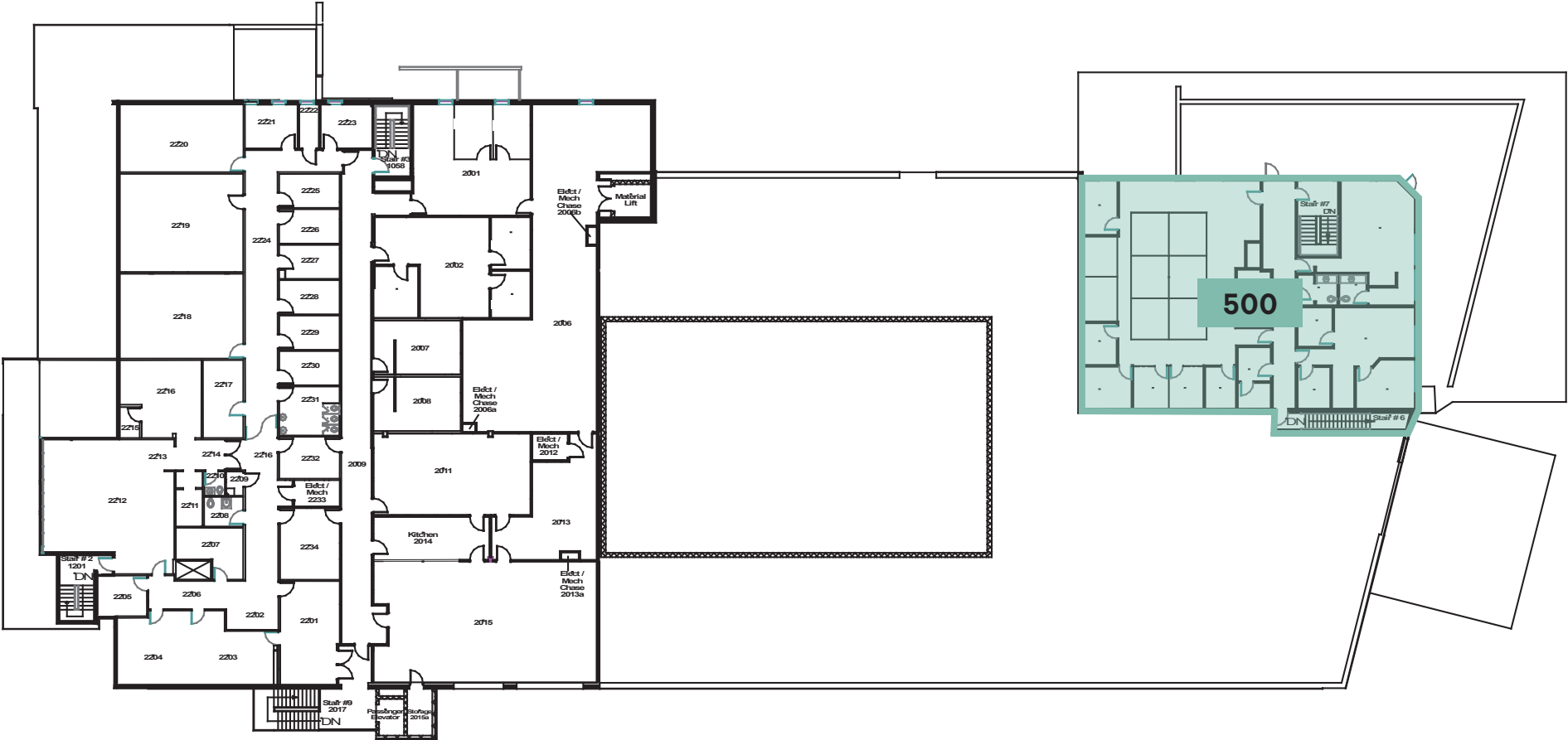


Available Units - First Floor



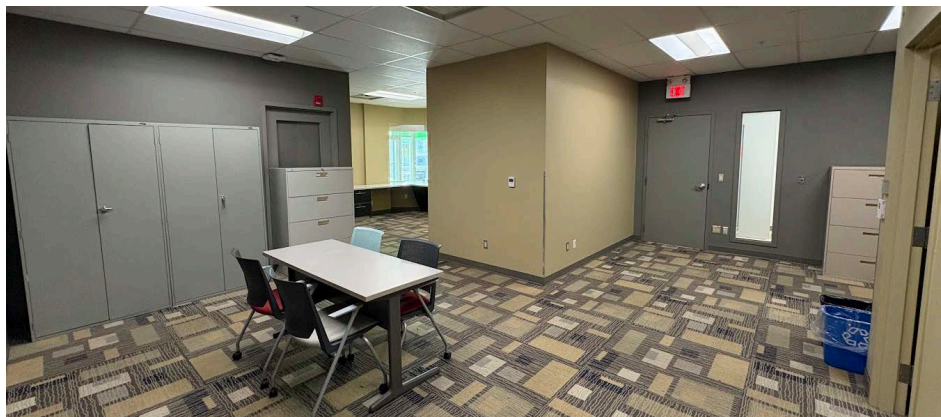
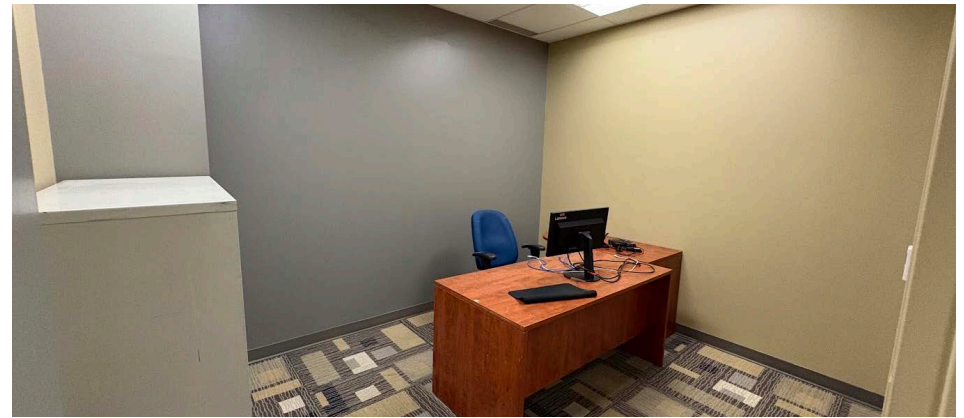
UNIT	TOTAL SIZE	LEASE RATE	OCCUPANCY
 1068	±658 SF	\$24.00 PSF Gross	Immediate
 1100	±4,896 SF	\$24.00 PSF Gross	Immediate

Available Units - Second Floor



UNIT	TOTAL SIZE	LEASE RATE	OCCUPANCY
400	±5,871 SF	\$24.00 PSF Gross	Immediate
500	±4,013 SF	\$24.00 PSF Gross	Immediate
400-500	±9,884 SF	\$24.00 PSF Gross	Immediate

Unit 1068



Unit 1100



Unit 400-500



65 Hanson Avenue

Kitchener, Ontario

CBRE



Contact Us

Will Hunter**

Vice President
+1 519 340 2307
will.hunter@cbre.com

Duncan Webster**

Senior Vice President
+1 519 340 2322
duncan.webster@cbre.com

CBRE Limited, Real Estate Brokerage | 72 Victoria Street S, Suite 200 | Kitchener, ON | N2G 4Y9 | **Broker

This disclaimer shall apply to CBRE Limited, and to all divisions of the Corporation (“CBRE”). The information set out herein (the “Information”) has not been verified by CBRE, and CBRE does not represent, warrant or guarantee the accuracy, correctness and completeness of the Information. CBRE does not accept or assume any responsibility or liability, direct or consequential, for the Information or the recipient’s reliance upon the Information. The recipient of the Information should take such steps as the recipient may deem necessary to verify the Information prior to placing any reliance upon the Information. The Information may change and any property described in the Information may be withdrawn from the market at any time without notice or obligation to the recipient from CBRE. Mapping Sources: Canadian Mapping Services canadamapping@cbre.com; DMTI Spatial, Environics Analytics, Microsoft Bing, Google Earth

www.cbre.com