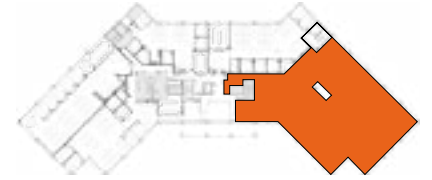


SUITE 260

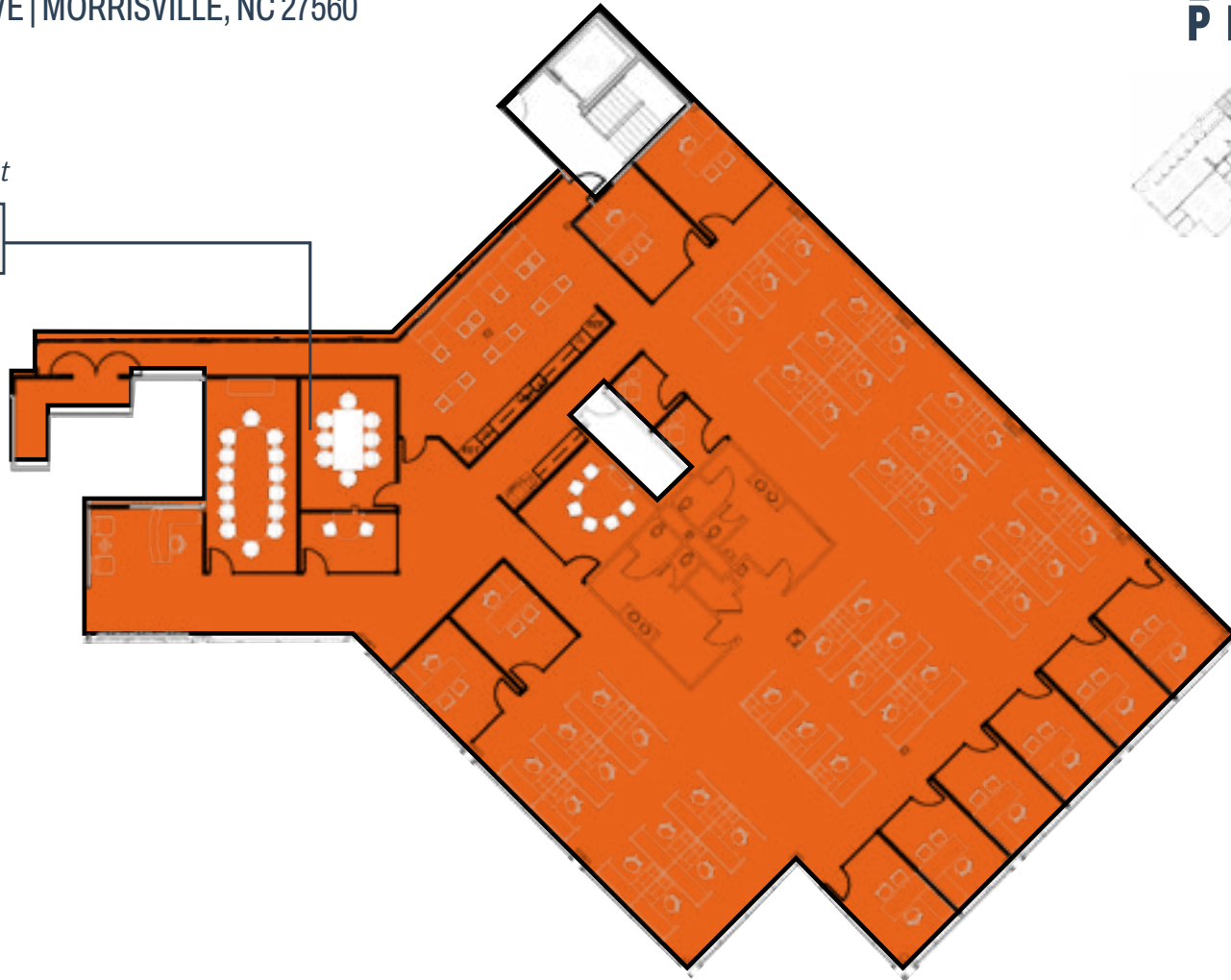
1800 PERIMETER PARK DRIVE | MORRISVILLE, NC 27560

1800 PERIMETER



future potential layout

SUITE 260
10,474 RSF



LEASING CONTACTS

William Allen

Managing Partner

919.415.4390 | wallen@trinity-partners.com

Alex Dunn

Director, Office Leasing

919.415.4405 | adunn@trinity-partners.com