

# 8031 PHILADELPHIA RD

8031 Philadelphia Rd, Baltimore, MD 21237  
Baltimore County



## PROPERTY HIGHLIGHTS:

- Building is 4,547 SF
- .17 Acres
- BL AS zoning
- 12' clear
- One Drive in Door

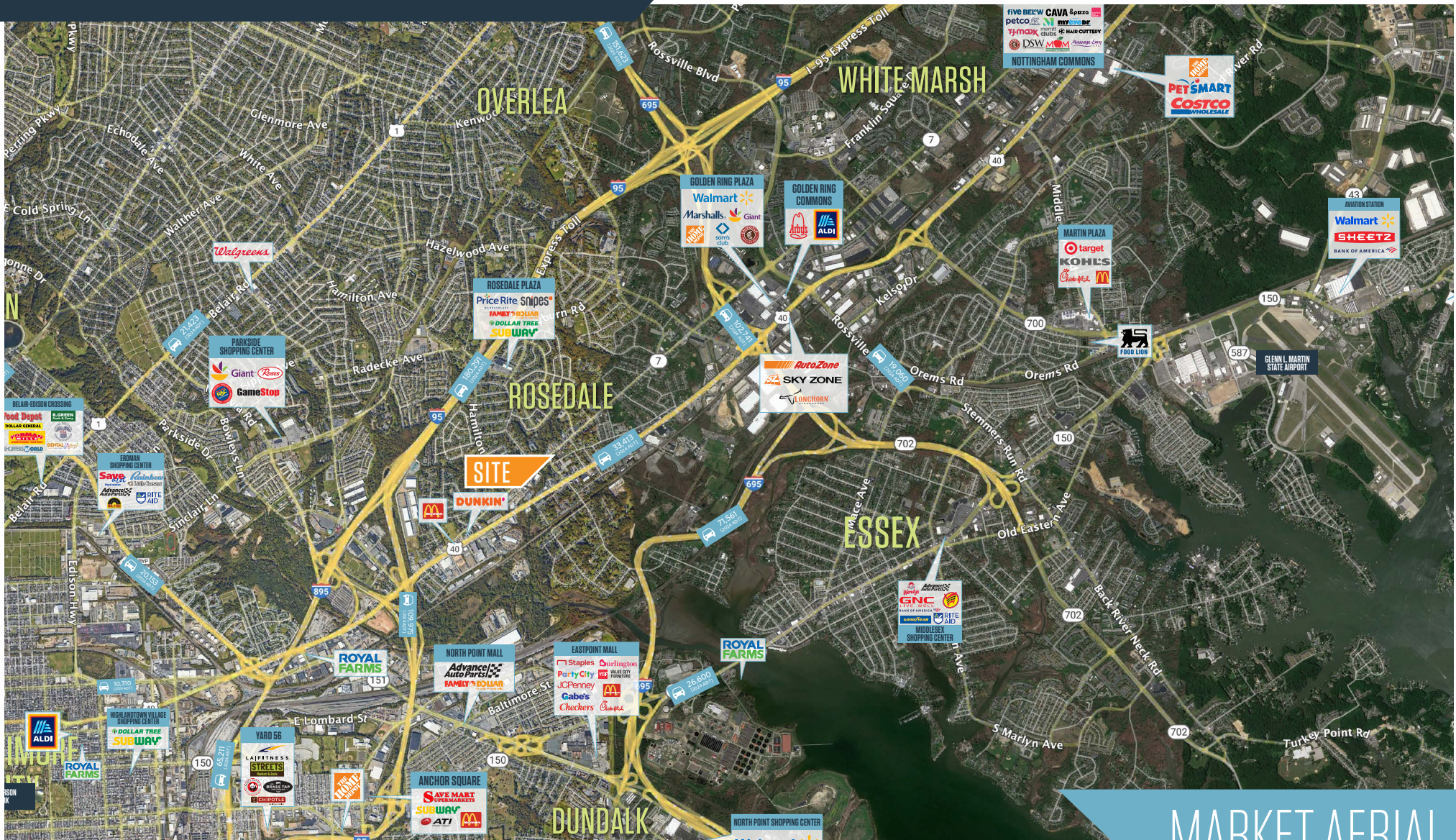
**Ben Brooks**  
bbrooks@klnb.com  
443-632-2048

100 West Road, Suite 505  
Towson, MD 21204  
klnb.com

**NAI**klnb

# 8031 PHILADELPHIA RD

8031 Philadelphia Rd, Baltimore, MD 21237  
Baltimore County



MARKET AERIAL

Ben Brooks  
bbrooks@klnb.com  
443-632-2048

100 West Road, Suite 505  
Towson, MD 21204  
klnb.com



# 8031 PHILADELPHIA RD

8031 Philadelphia Rd, Baltimore, MD 21237  
Baltimore County



CLOSE UP

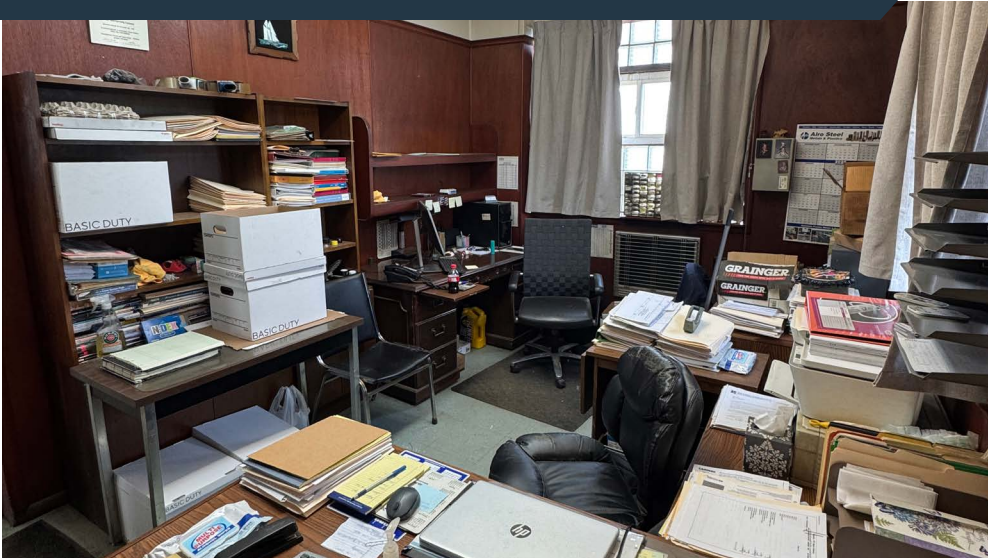
**Ben Brooks**  
bbrooks@klnb.com  
443-632-2048

100 West Road, Suite 505  
Towson, MD 21204  
klnb.com

**NAI**klnb

# 8031 PHILADELPHIA RD

8031 Philadelphia Rd, Baltimore, MD 21237  
Baltimore County



PHOTOS

Ben Brooks  
bbrooks@klnb.com  
443-632-2048

100 West Road, Suite 505  
Towson, MD 21204  
klnb.com

**NA**klnb

# 8031 PHILADELPHIA RD

8031 Philadelphia Rd, Baltimore, MD 21237  
Baltimore County

CLICK TO VIEW PROPERTY WEBSITE

For More Information, Please Contact:

**Ben Brooks**

bbrooks@klnb.com

443-632-2048

100 West Road, Suite 505  
Baltimore, MD 21204

[klnb.com](http://klnb.com)



[instagram.com/klnbcrc](https://www.instagram.com/klnbcrc)



[linkedin.com/company/klnb](https://www.linkedin.com/company/klnb)



[facebook.com/KLNBCRE](https://www.facebook.com/KLNBCRE)

While we have no reason to doubt the accuracy of any of the information supplied, we cannot, and do not, guarantee its accuracy. All information should be independently verified prior to a purchase or lease of the property. We are not responsible for errors, omissions, misuse, or misinterpretation of information contained herein and make no warranty of any kind, express or implied, with respect to the property or any other matters.

**NAI** klnb