



ILLINOIS MEDICAL DISTRICT



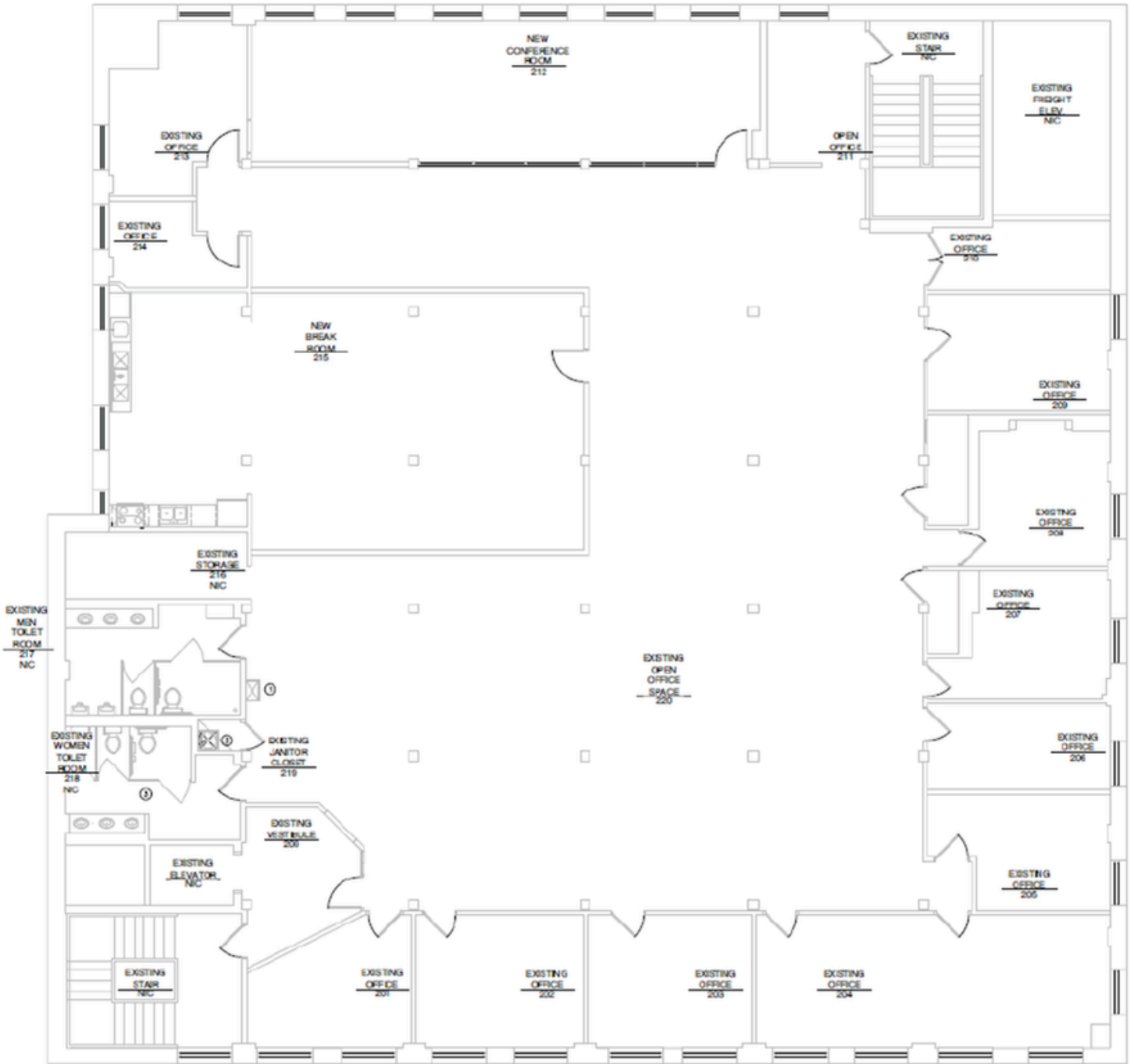
 **JLL** SEE A BRIGHTER WAY

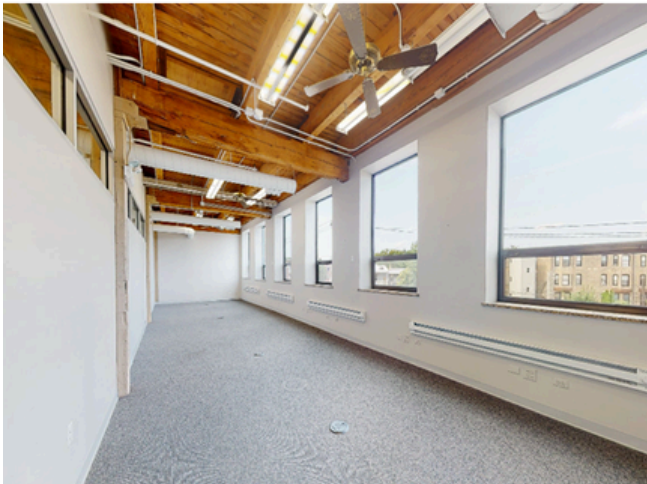
2240 W Ogden Avenue

Chicago, IL 60612

8,789 RSF Office Space Available
in the Illinois Medical District

Suite 200 - 8,789 SF

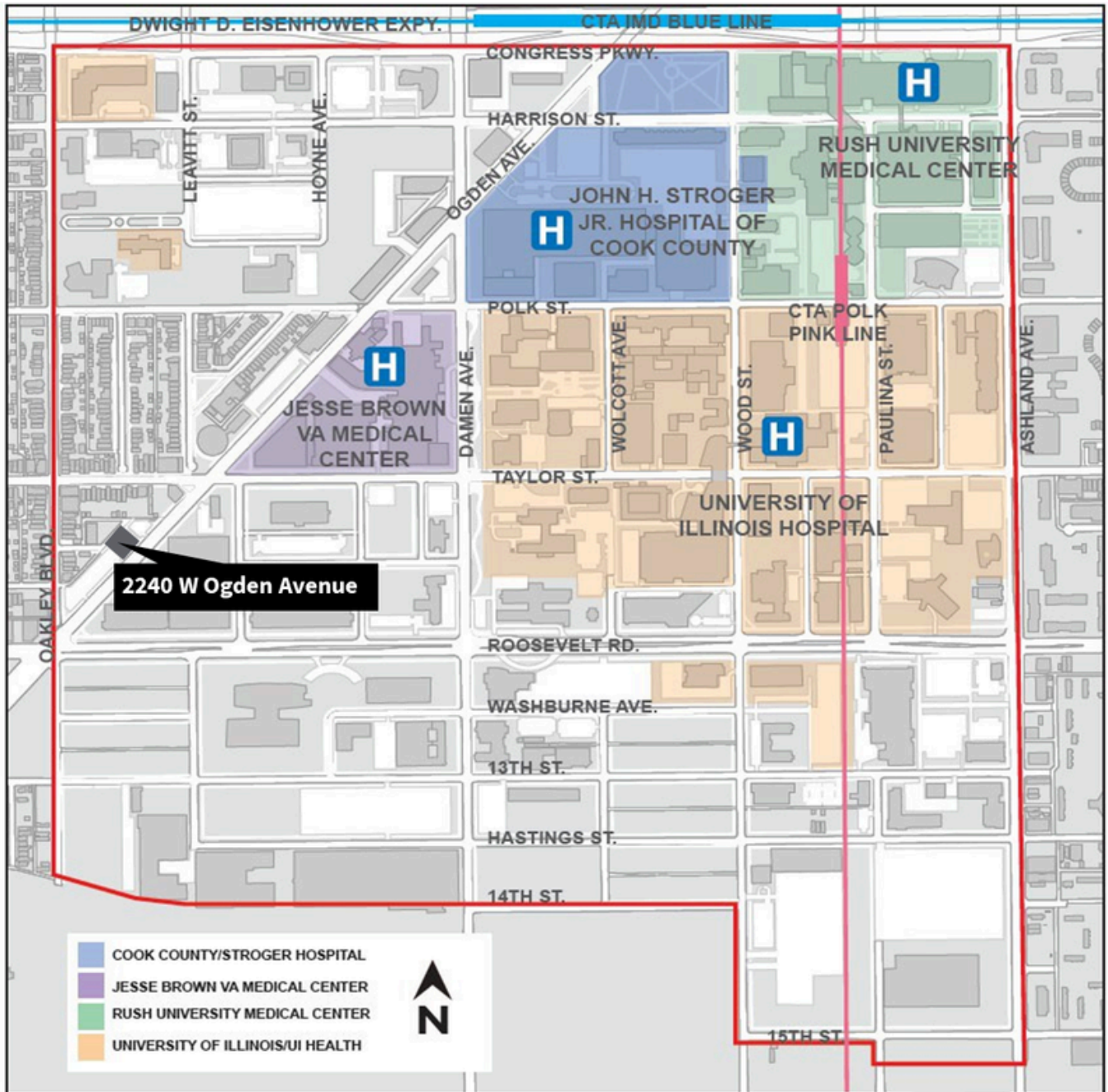




Building Overview

Size	39,147 SF / 4 Stories
Class	B
Floor Size	8,789 RSF
Parking	2.67 per 1,000 RSF
Proximity to Transit	Close to Pink and Blue CTA Lines and I-290

Illinois Medical District Area Overview



Max Zwolan
Senior Vice President, JLL
Max.Zwolan@jll.com
+1 734 255 5810

Grace Fangman
Associate, JLL
Grace.Fangman@jll.com
+1 312 245 5010

Sarah Ware
Founder and CEO, Ware Realty Group
Sarah@jwarerealtygroup.com
+1 312 376 1448 x101