



**Units T28 A-O**  
Snetterton, NR16 2JU



# Units T28 A-O

## Brand new commercial units available FOR SALE

6m to eaves

Electric vehicle access door

UPVC personnel door and glazing

Ability to combine

Fibre to the premises providing superfast internet access



### PROPERTY OVERVIEW

**Location:** Units T28 A-O, Snetterton Business Park, Snetterton, Norfolk, NR16 2JU

**Property Type:** Brand-new terraced business units (usage classes B2 & B8)

**Availability:** Available for sale ready for occupation May 2026  
Approx.

#### Specifications:

- Fitted out to shell and core
- 6m to eaves
- Electric vehicle access door
- UPVC personnel door and glazing
- Ability to combine
- Fibre to the premises superfast internet access

### DESIGN AND FEATURES

**Construction:** Steel portal frame design with horizontal and vertical cladding in anthracite with silver flashings, and gutters

**Eaves Height:** 6m Approx.

**Doors:** Vehicle access doors and separate personnel doors

**Parking:** Each unit includes allocated parking spaces

### SERVICES

Sewerage to shared treatment plant

Fibre to the premises

Service Charge: payable for access road and communal areas

23kva 3 phase electric connection

Metered water connection

### TERMS

Offered for sale freehold with vacant possession. VAT is applicable.

Rental of units also available.

### ACCOMMODATION

#### Unit Sizes

Units A – H – 743 sq. ft. each

Units I-O – 1,905 sq. ft. each

**Overall Area: 19,279 sq. ft.**

### NEARBY OCCUPIERS



HITACHI

Reliable solutions



SHARP

### Units A-H

Each providing 743 sq. ft.

**£148,600 each +VAT**

### Unit I, J, K, L or M

Each providing 1,905 sq. ft.

**£323,850 each +VAT**

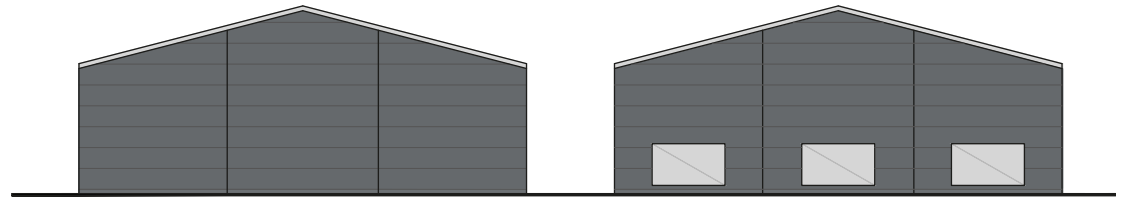
### Units N & O combined

Providing a total area of 3,810 sq. ft.

**£648,000 +VAT**

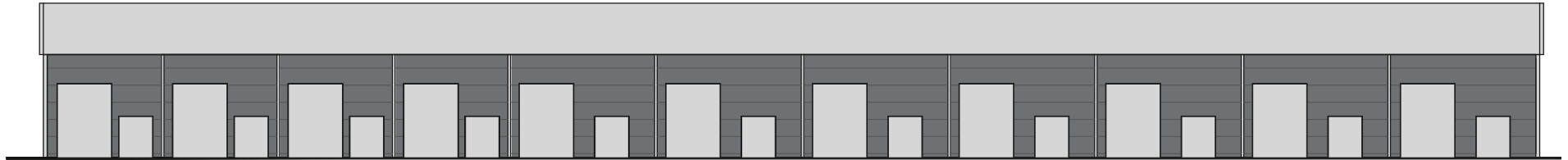
# Units T28 A-O

## Elevations & Floor Plan

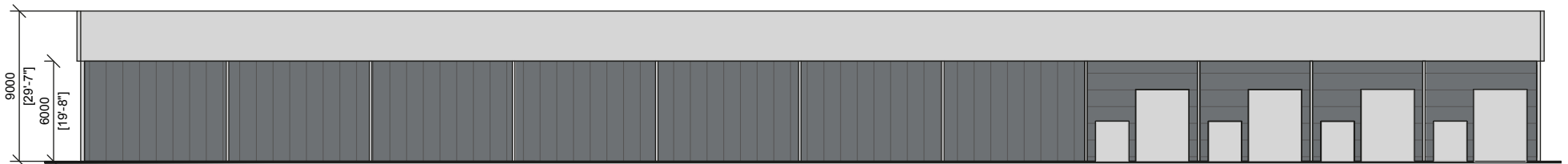


Side Elevation - WEST

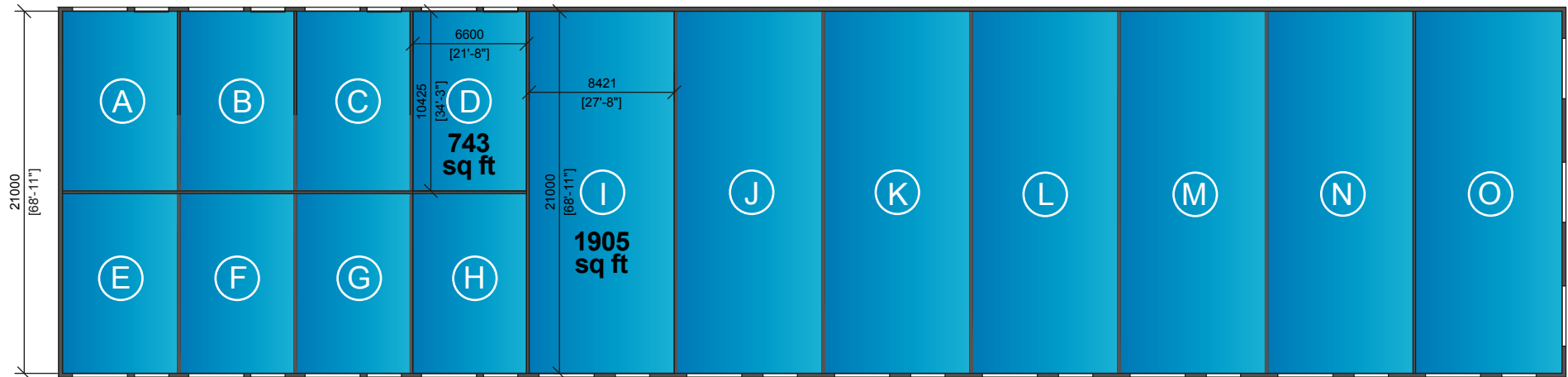
Side Elevation - EAST



Front Elevation - SOUTH



Rear Elevation - NORTH



FLOOR PLAN

27000  
[88'-8"]

60000  
[197']



T28

T29

Thetford

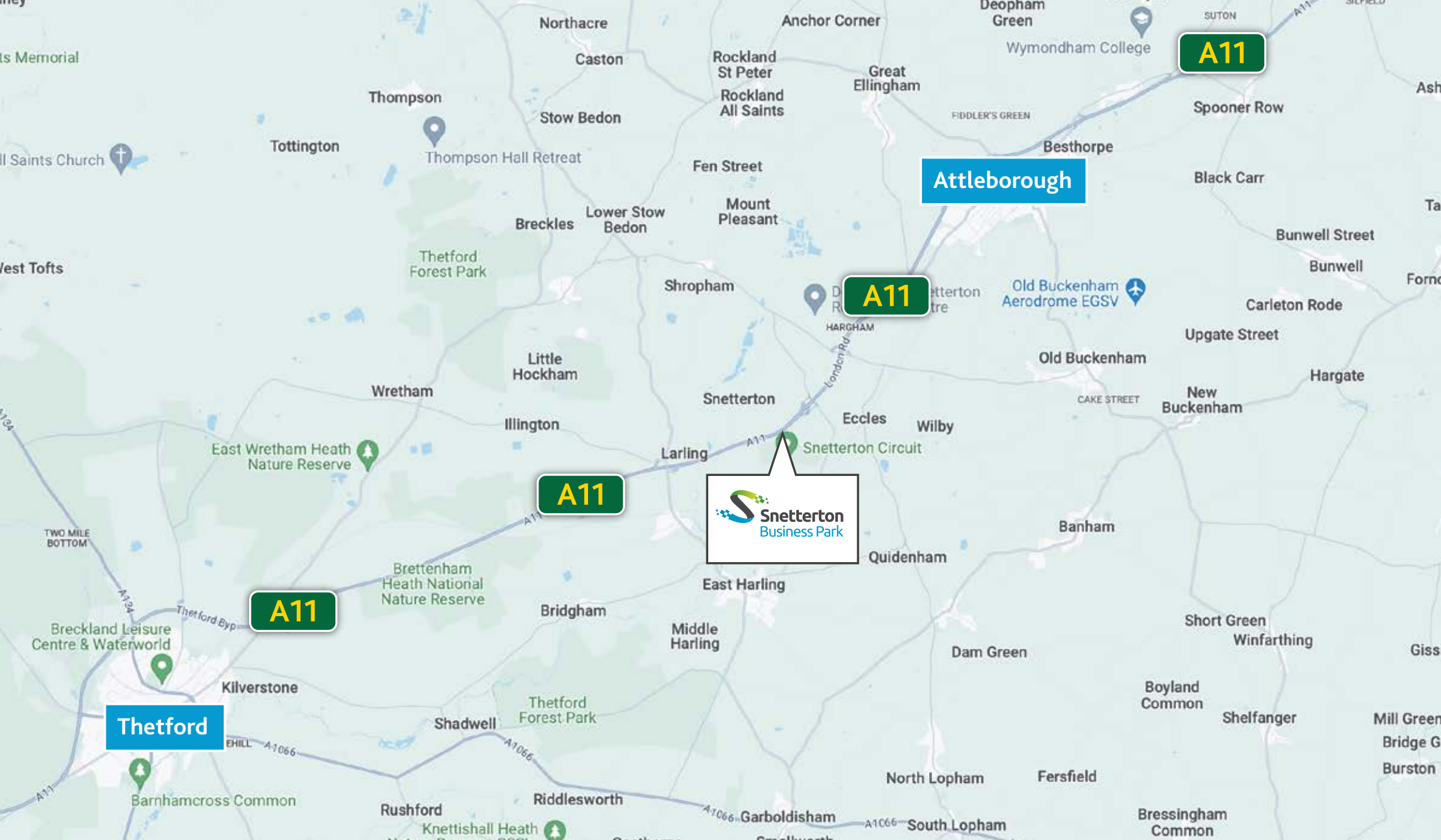
A11

Norwich

UNITS  
1-7

T1-7





**Thetford**

**Attleborough**

 **Snetterton  
Business Park**

Snetterton Business Park  
Harling Road, Snetterton  
Norfolk NR16 2JU

hello@snettertonpark.co.uk  
01953 887878

Nick Dunn  
07977 121341  
Nick.dunn@brown-co.com

Katie Bates  
07818 534732  
Katie.bates@brown-co.com

 **Snetterton  
Business Park**

**BROWN & CO**