



3111-3145 Bellbrook Dr.

Memphis, TN 38116

Available for Sublease
52,784± SF | Industrial



SITE
3111-3145 Bellbrook Dr.

Suite Available



11- dock doors
1- drive-in door



Total- 52,784SF



Sublease expires
3/31/27

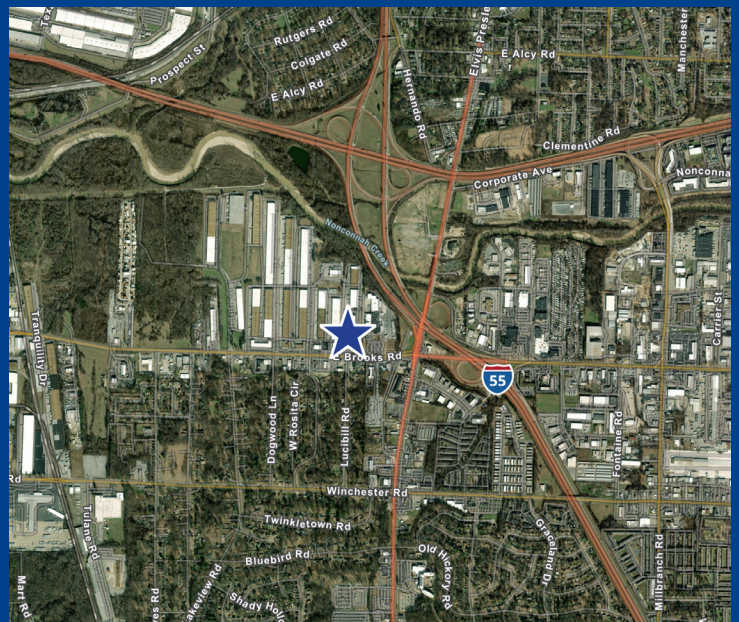


18'
Clear
Height

Please contact

ELLIOT EMBRY, SIOR
901.312.4902
elliott.embry@colliers.com

BRYCE DAVES, SIOR
901.312.4926
bryce.daves@colliers.com



[View Online](#)

Sublandlord Profile

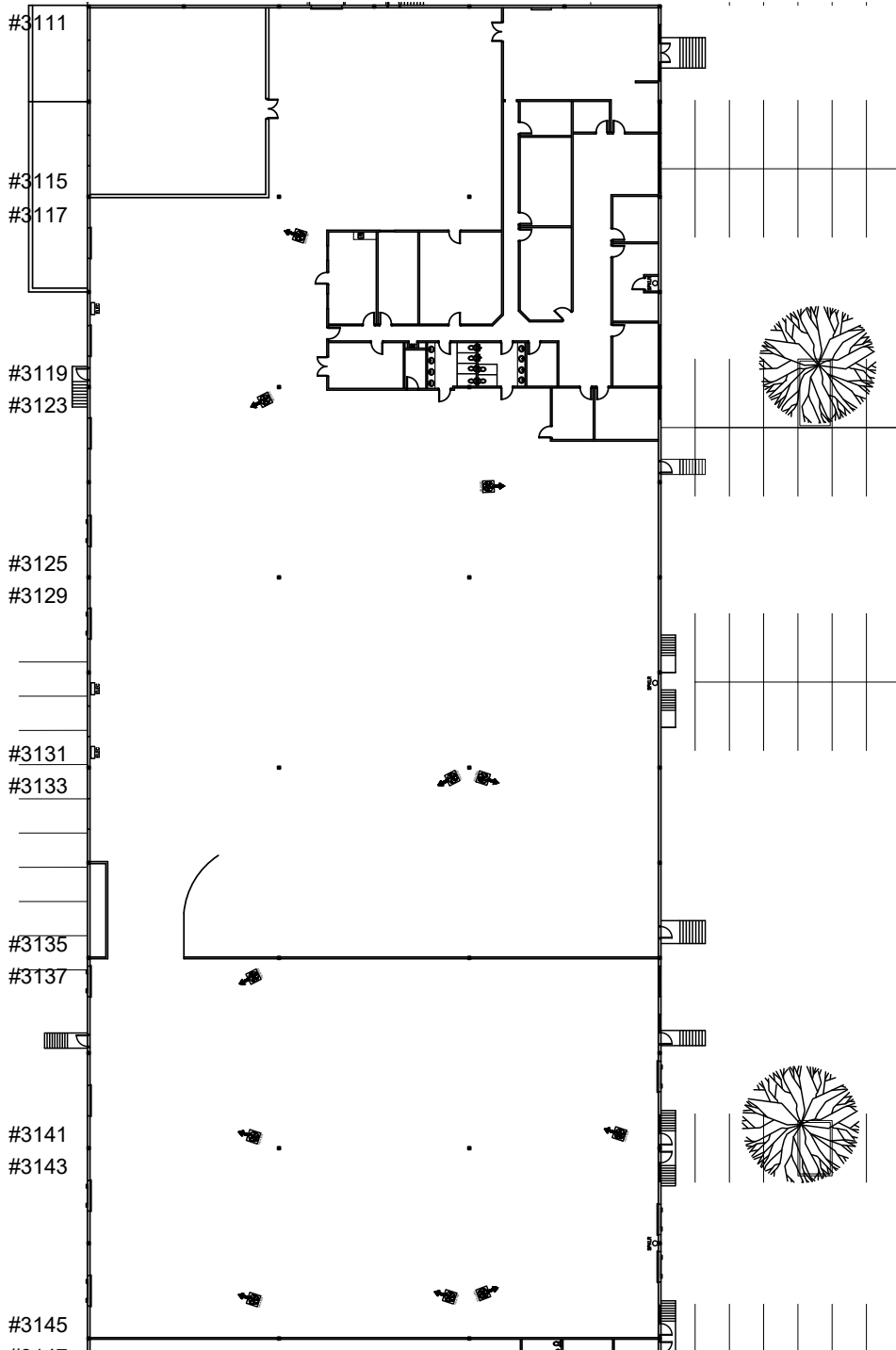


Grimco, Inc. is a 150-year-old wholesale sign supply distributor founded in 1875 and headquartered St. Louis, Missouri, that has evolved from manufacturing stamps and badges to becoming a leading distributor in the sign and graphics industry. Grimco operates over 65-70 locations across the United States, Canada, and the U.K., with over 1,000 worldwide employees.

Grimco currently leases over 2 million square feet of distribution space in the US ranging from 5,000 to 150,000 square feet. With its extensive network of locations, Grimco has built strong, dependable relationships with its landlords. The Company consistently fulfills its lease obligations and has maintained a perfect record of rental payments. This track record reflects Grimco's commitment to financial responsibility and operational excellence. Grimco is willing to provide financial statements to confirm our financial strength for serious offers with a signed NDA.



Floorplan



Please contact

ELLIOT EMBRY, SIOR
901.312.4902
elliott.embry@colliers.com

BRYCE DAVES, SIOR
901.312.4926
bryce.daves@colliers.com



6363 Poplar Ave., Suite 220
901.375.4800
colliers.com/memphis