

**WESTGATE**  
ENTERTAINMENT DISTRICT



LOOP  
**101**

3.5 miles

**FOR SALE | Luke Landing II**

- 18 Engineered Residential Lots
- Utilities at Property Line
- Close to Westgate & Loop 101
- Maricopa County Island, AZ

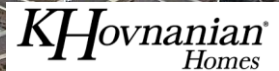
El Mirage Rd

Glendale Ave



**LENNAR**

127th Ave



**For Sale**  
**18 SFR Lots**

For more info contact:

**LUKE LAND**

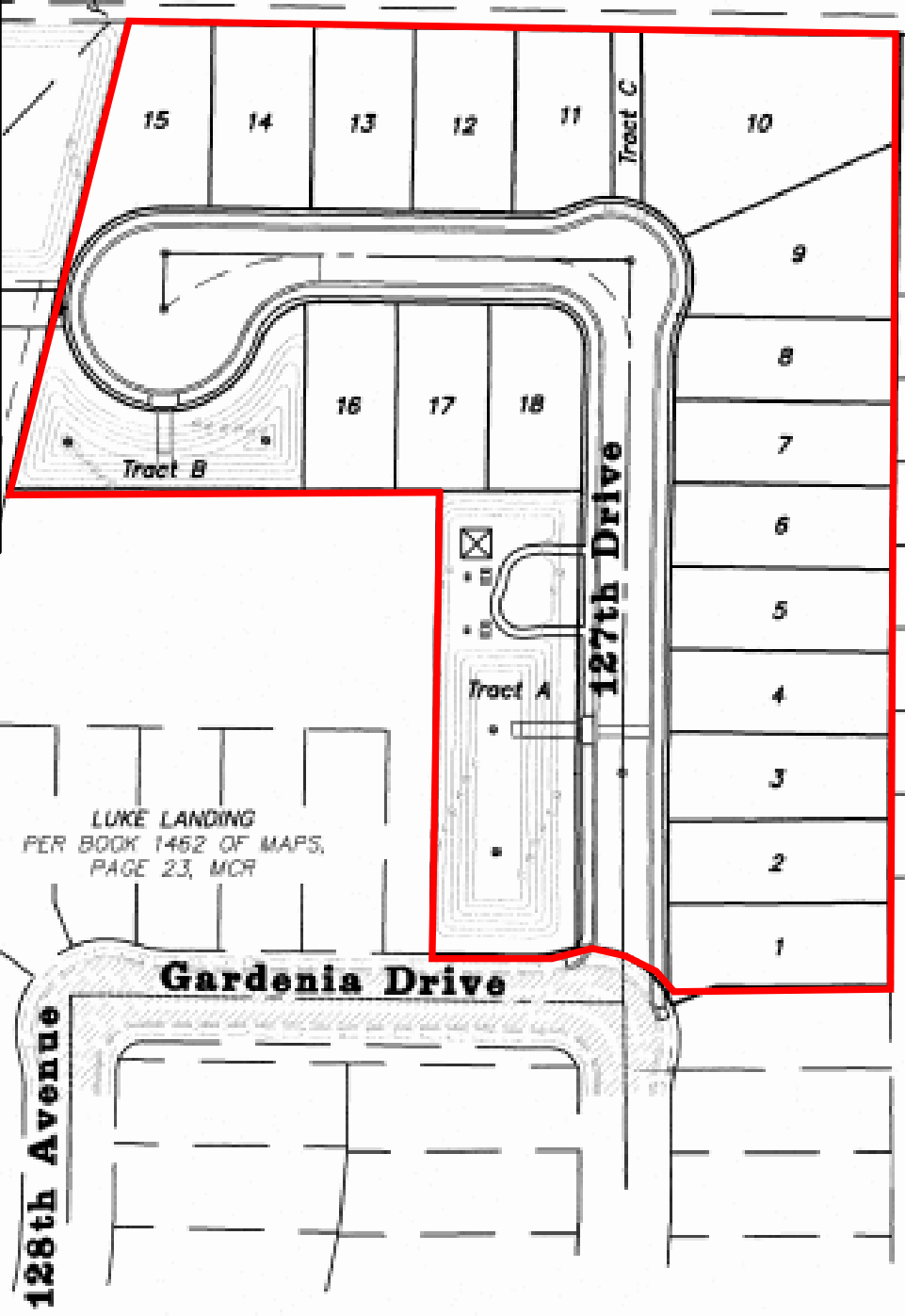
Realty & Investments  
Since 1959

602.995.7575



**LOT AREAS**

LOT	AREA (S.F.)	AREA (ACRES)	LOT WIDTH
1	5,522	0.127	45.00'
2	5,400	0.124	45.00'
3	5,581	0.128	47.26'
4	5,400	0.124	45.00'
5	5,400	0.124	45.00'
6	5,400	0.124	45.00'
7	5,400	0.124	45.00'
8	5,363	0.123	45.00'
9	7,937	0.182	57.70'
10	12,242	0.281	58.60'
11	5,128	0.117	51.96'
12	5,500	0.126	55.00'
13	5,500	0.126	55.00'
14	5,500	0.126	55.00'
15	6,340	0.145	45.00'
16	5,054	0.116	50.00'
17	5,025	0.115	50.00'
18	5,032	0.115	51.25'
Total	106,724	2.447	



N  
R-5 RUPD

LUKE LANDING  
PER BOOK 1462 OF MAPS,  
PAGE 23, MCR

URVEY  
CAP FLUSH  
'TER CORNER  
SHIP 2 NORTH,  
1/4 0/4 AND  
1/4 MERIDIAN,  
ARIZONA.

MARBELLA RANCH PHASE 3  
PER BOOK 1465 OF MAPS, PAGE 34, MCR