

# RETAIL

## 631 SW 19<sup>th</sup> Street Moore, Oklahoma 2,827 SF Restaurant Space with Patio



- 9,414 Square Foot Building
- Available August 1, 2026
- Starting Rate at \$46.00 per sf/yr (endcap)
- 2025 OPEX \$7.75 psf/yr
- Patio Area
- Winco Grocery, Gold's Gym, At-Home, Anchors
- Excellent Access & Signage
- Fronting 19<sup>th</sup> Street
- Co-Tenants: Mo'Bettah, SportsClips, Divine Nails

The intersection is anchored by At-Home and WinCo Grocery in the retail heart of the City of Moore. 631 SW 19<sup>th</sup> Street is shadow anchored by Super Target sharing the Max Morgan signalized light with cross access across all of Royal Rock. The Royal Rock Development is situated West of the Super Wal-Mart and directly North of Home Depot. Other national retailers in the area include Warren Theater, Bed Bath & Beyond, Hobby Lobby, Kohl's, Lowe's, Shoe Carnival, Best Buy, Marshall's, Harley Davidson, Furr's Cafeteria, Chili's, Starbucks, Dollar Tree, Aldi's, Taco Bueno, Subway, McDonald's, Carl's Jr., BancFirst, Sprint, AT&T, Chicken Express, Schlotzky's, and Gold's Gym.

RANDY S. VAILLANCOURT, Managing Broker  
5030 N May Ave, #435  
405.210.6772 (mobile) • [randy@avenuecre.com](mailto:randy@avenuecre.com)  
[www.avenuecre.com](http://www.avenuecre.com)

**AVENUE**  
COMMERCIAL REAL ESTATE

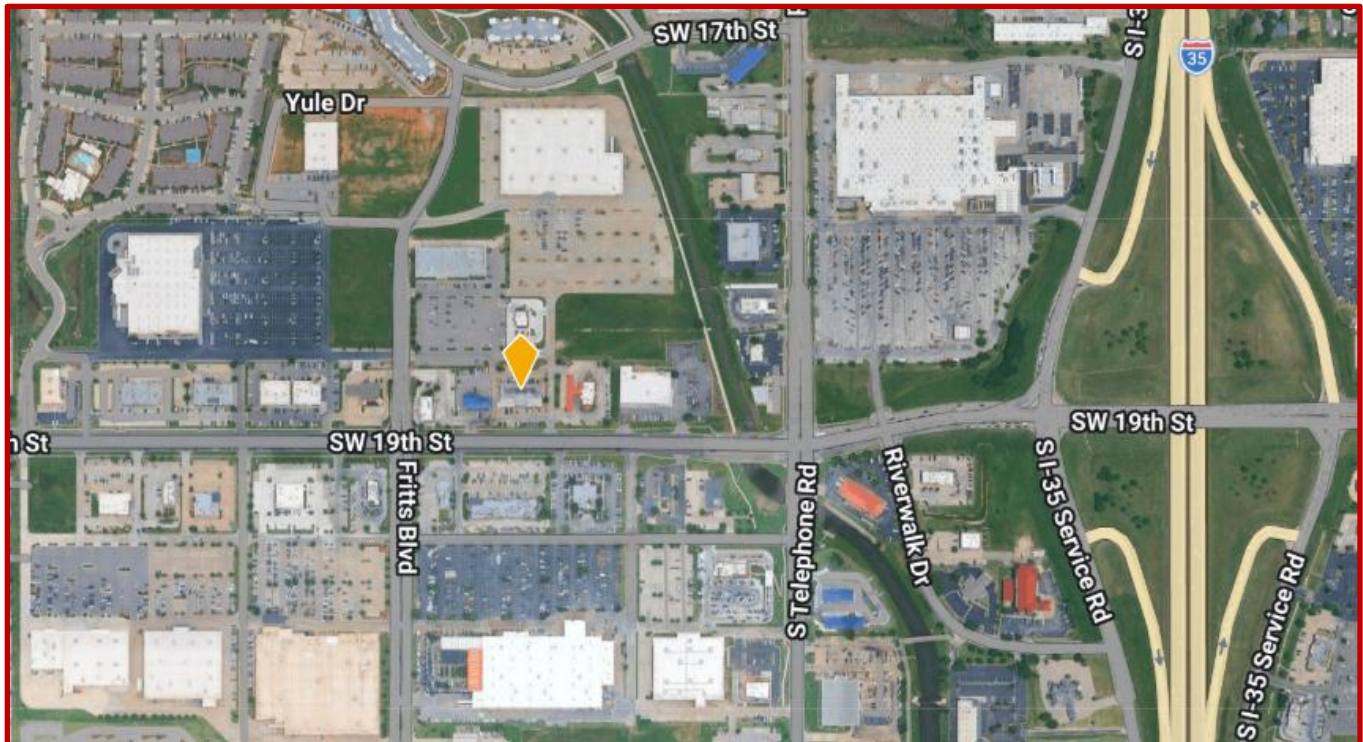
# RETAIL

For Lease



Collection Street	Cross Street	Traffic Vol	Last Meas...	Distance
SW 19th St	Fritts Blvd E	24,526	2025	0.10 mi
Southwest 19th Street	Fritts Blvd E	25,635	2021	0.13 mi
Southwest 19th Street	Riverwalk Dr E	31,351	2021	0.21 mi
SW 19th St	Riverwalk Dr E	29,326	2025	0.21 mi
S Telephone Rd	SW 17th St N	11,803	2025	0.24 mi
Southwest 19th Street	Eagle Dr W	24,323	2025	0.27 mi
Southwest 19th Street	-	24,377	2023	0.27 mi
SW 19th St	Riverwalk Dr W	23,368	2024	0.28 mi
Southwest 19th Street	Riverwalk Dr W	22,567	2025	0.29 mi
S Telephone Rd	SW 25th St S	5,784	2025	0.35 mi

Made with TrafficMetrix® Products



# RETAIL

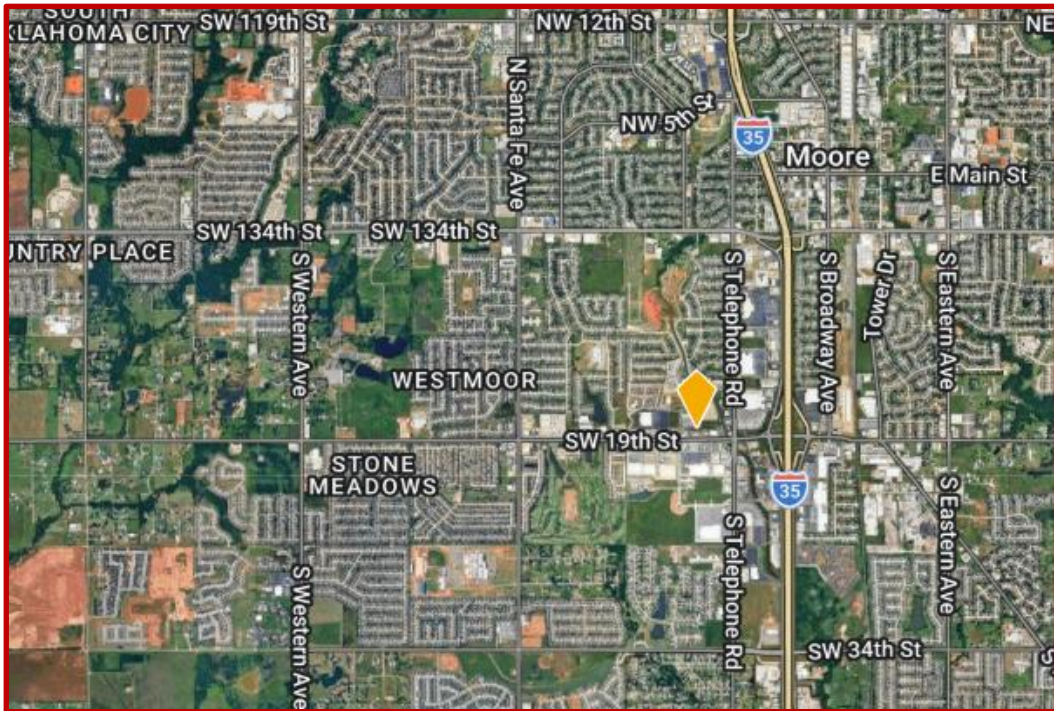
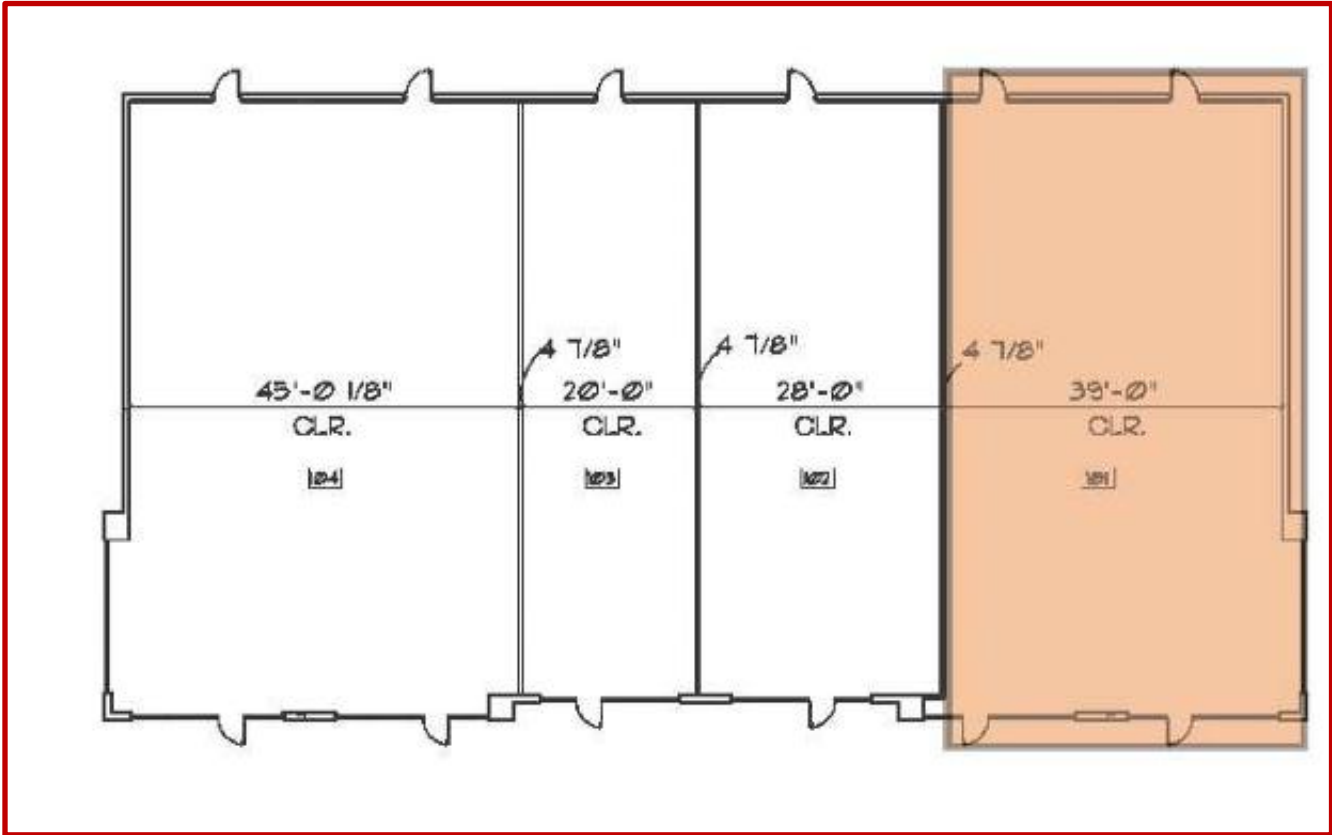
For Lease



Although the information contained herein is believed to be correct, Avenue Commercial Real Estate and its employees disclaim any and all liability for representations and warranties, expressed or implied, contained herein and is submitted subject to errors and omissions.

# 2,827 SF East End-Cap

**AVENUE**  
COMMERCIAL REAL ESTATE



Although the information contained herein is believed to be correct, Avenue Commercial Real Estate and its employees disclaim any and all liability for representations and warranties, expressed or implied, contained herein and is submitted subject to errors and omissions.