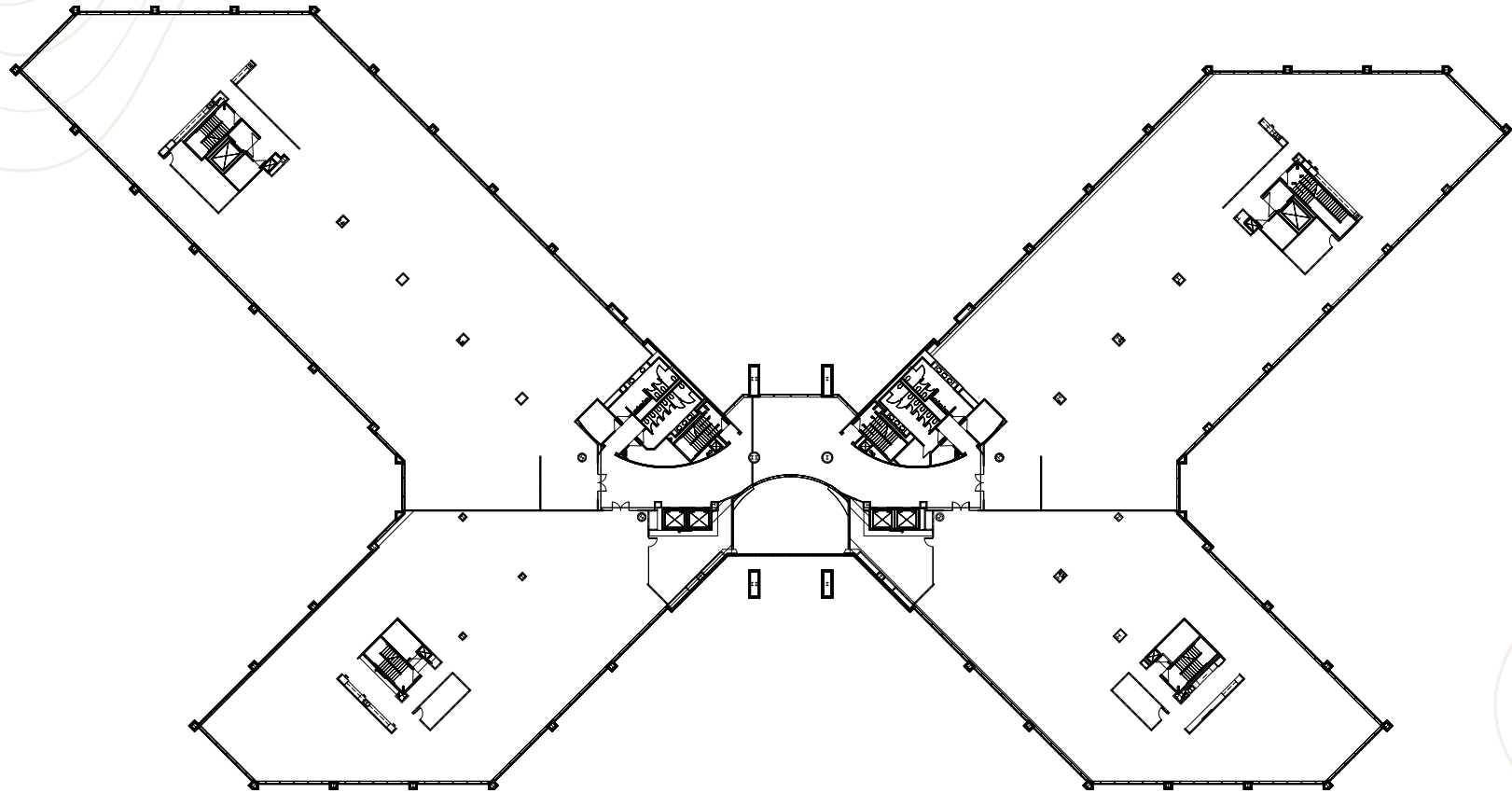


# PAPAGO BUTTES

3 building ±504,000 sf office environment  
Phase I - 1500 N. Priest Drive | Tempe, Arizona

2nd Floor | ±67,578 SF



**MIKE BEALL**

*Executive Managing Director*  
+1 602 224 4426  
mike.beall@cushwake.com

**CHRIS WALKER**

*Executive Managing Director*  
+1 602 224 4466  
chris.walker@cushwake.com

**JEFF WENTWORTH**

*Executive Managing Director*  
+1 602 224 4423  
jeff.wentworth@cushwake.com