

Office/Warehouse | For Sublease

± 15,200 SF ON 6.48 ACRE LOT



19459 FLIGHTPATH WAY, BAKERSFIELD, CA 93308

CBRE

Property Information

- Long Term Sublease through December 31, 2034
- Approximate ±15,200 SF Office / Warehouse Building on 6.48 Acre Lot with Fenced Storage Yard
- ±3,200 SF Modern Office Build Out
- 18' Clear Warehouse
- Near Highway 99 & 7th Standard Road
- Within North Meadows Business Park
- Three (3) Grade Level Doors Including Two (2) 14' x 16' and One (1) 24' x 16'



AVAILABLE SF
15,200 SF



ASKING RENT
\$1.70/SF/mo NNN



NNN CHARGES
± \$0.21/SF/mo



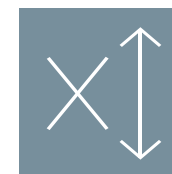
3 GRADE LEVEL
DOORS



± 3,200 SF OFFICE
BUILD OUT



LOT SIZE
6.48 ACRES



18' CLEAR HEIGHT

Office/Warehouse | For Sublease

± 15,200 SF ON 6.48 ACRE LOT



Quinn Rd

Flightpath Way

Petrol Rd

Aerial



Warehouse Photos

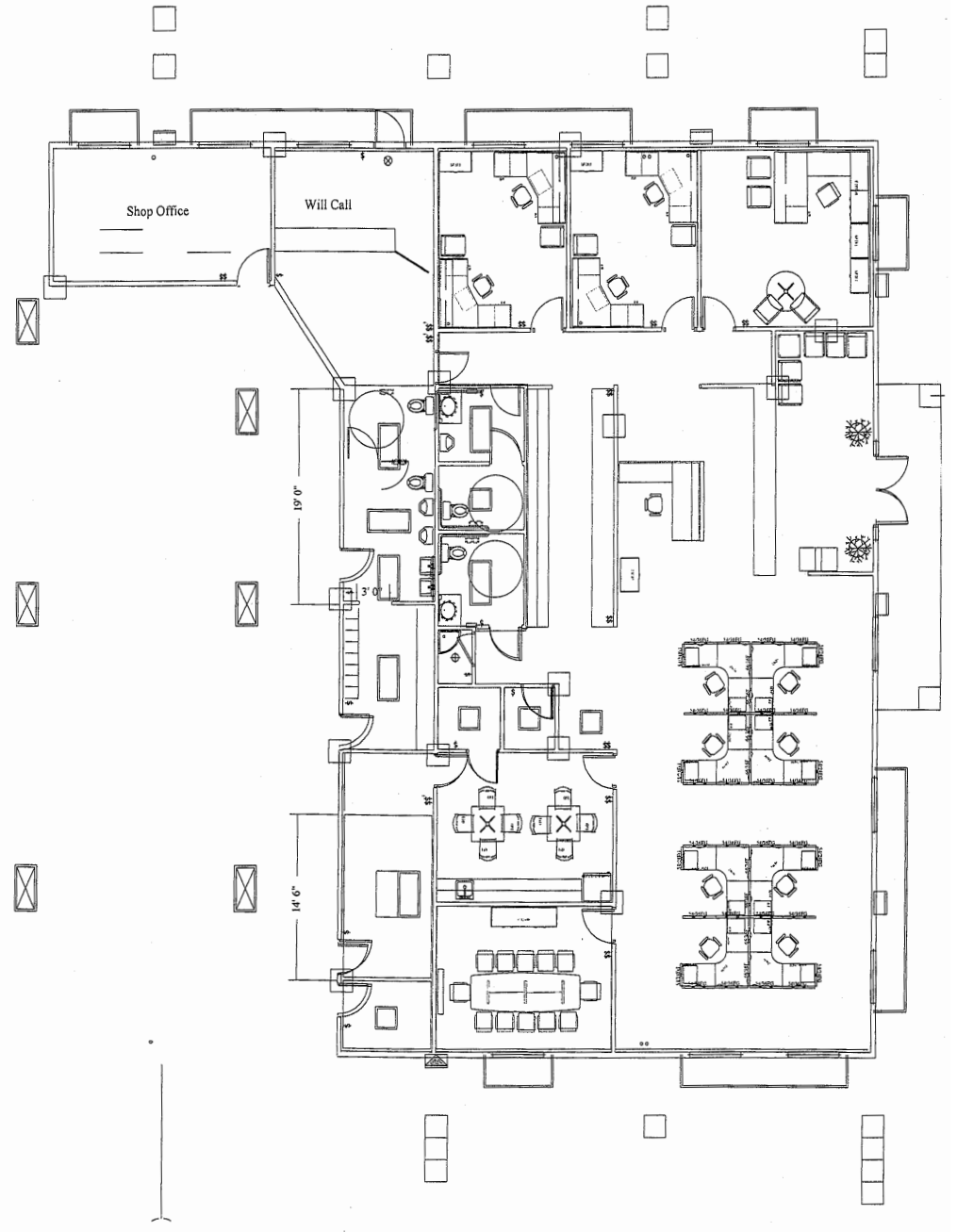
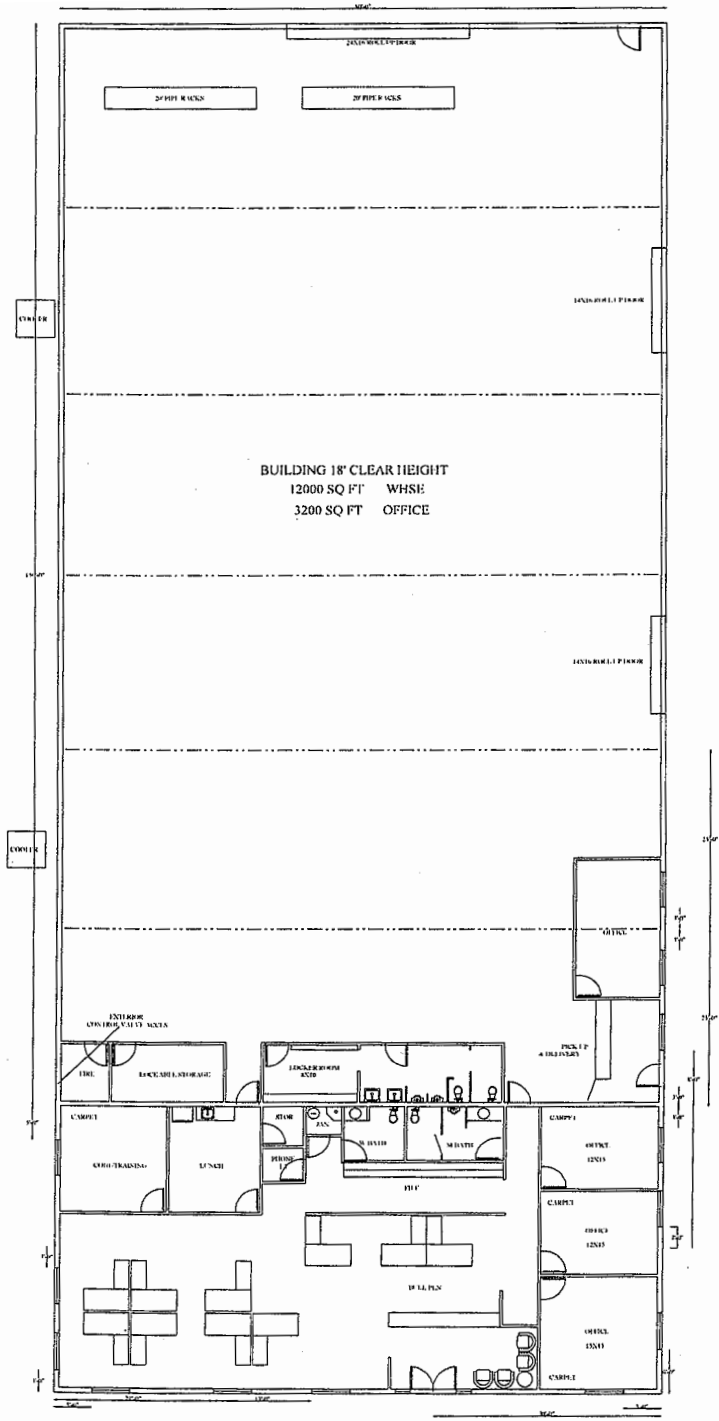


Office Photos



Yard Photos

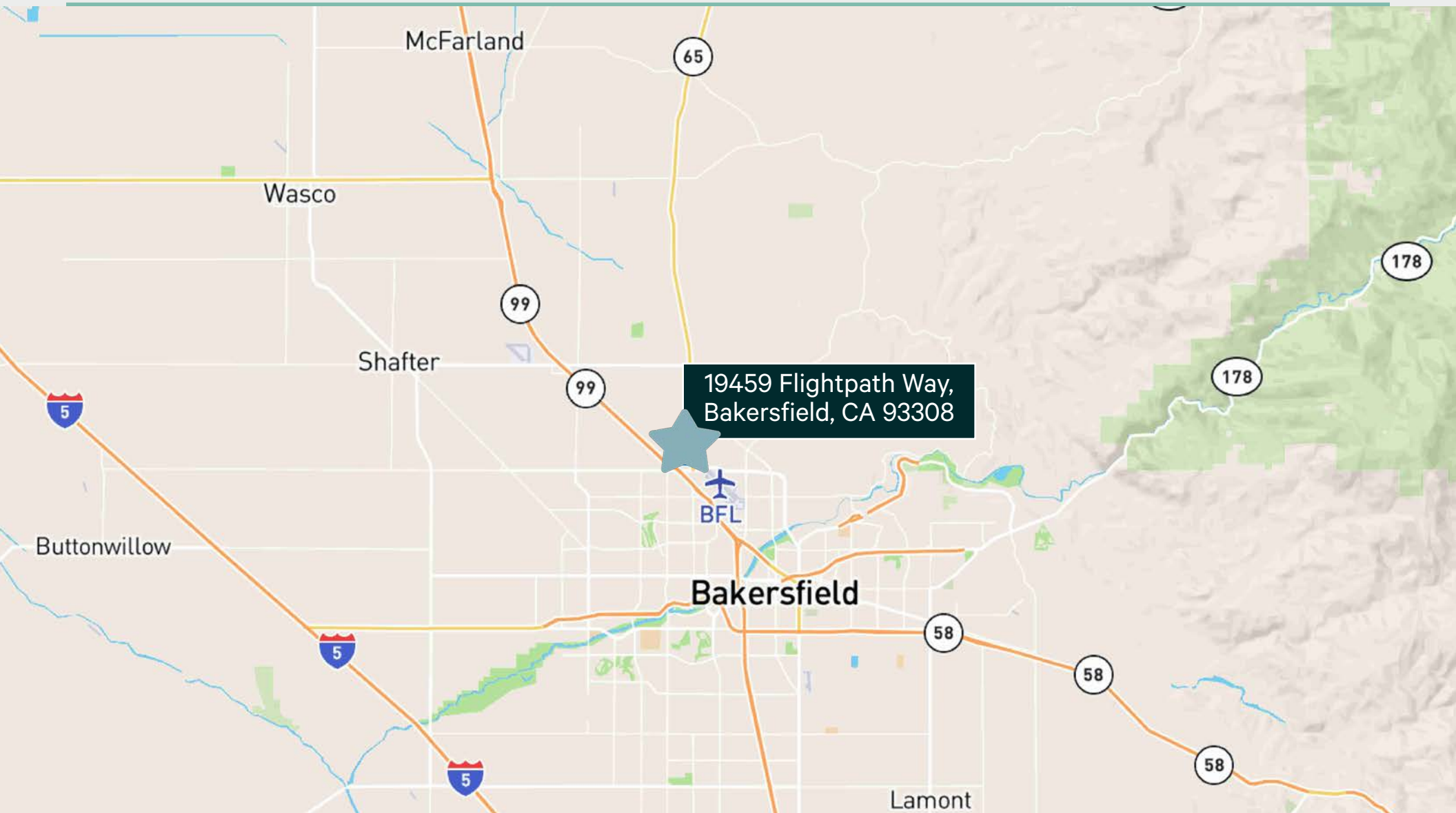
Building Floor Plan



Office Floor Plan

Office/Warehouse | For Sublease

± 15,200 SF ON 6.48 ACRE LOT



The Area

Office/Warehouse | For Sublease

± 15,200 SF ON 6.48 ACRE LOT

19459 FLIGHTPATH WAY
BAKERSFIELD,
CA 93308



Contact Us

Richard Ramirez
First Vice President
+1 818 907 4639
richard.ramirez@cbre.com
Lic. 01792270

© 2026 CBRE, Inc. All rights reserved. This information has been obtained from reliable sources but has not been verified for accuracy or completeness. CBRE, Inc. makes no guarantee, representation, or warranty and accepts no responsibility or liability for the accuracy, completeness, or reliability of the information contained herein. You should conduct a careful, independent investigation of the property and verify all information. Any reliance on this information is solely at your own risk. CBRE and the CBRE logo are service marks of CBRE, Inc. All other marks displayed on this document are the property of their respective owners, and the use of such marks does not imply any affiliation with or endorsement of CBRE. Photos herein are the property of their respective owners. Use of these images without the express written consent of the owner is prohibited.

CBRE