



OFFICE SPACE FOR SUBLEASE

1650 N. ARLINGTON HEIGHTS ROAD, ARLINGTON HEIGHTS, IL

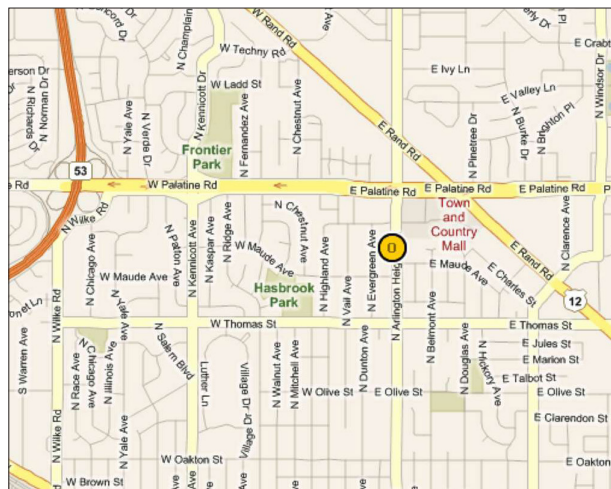


BUILDING FEATURES:

- 2,627 SF Office Available
- Ample parking
- Operable windows with great window line!
- Tenant signage available
- Hotels and restaurants nearby
- Located minutes from the Dundee Road / Route 53 full interchange
- High-speed internet and cable available
- 24-hour tenant access & tenant controlled HVAC
- **Rental Rate: \$16.00 Modified Gross**

AVAILABLE SPACE:

SUITE	SIZE (SF)
Suite 204-205	2,627 SF



FOR MORE INFORMATION:

RANDY OLCZYK
President/Principal
 Direct: 847.246.9611
randy@chicagolandcommercial.com

RAY OKIGAWA
Senior Vice President
 Direct: 847.246.9632
Ray@chicagolandcommercial.com



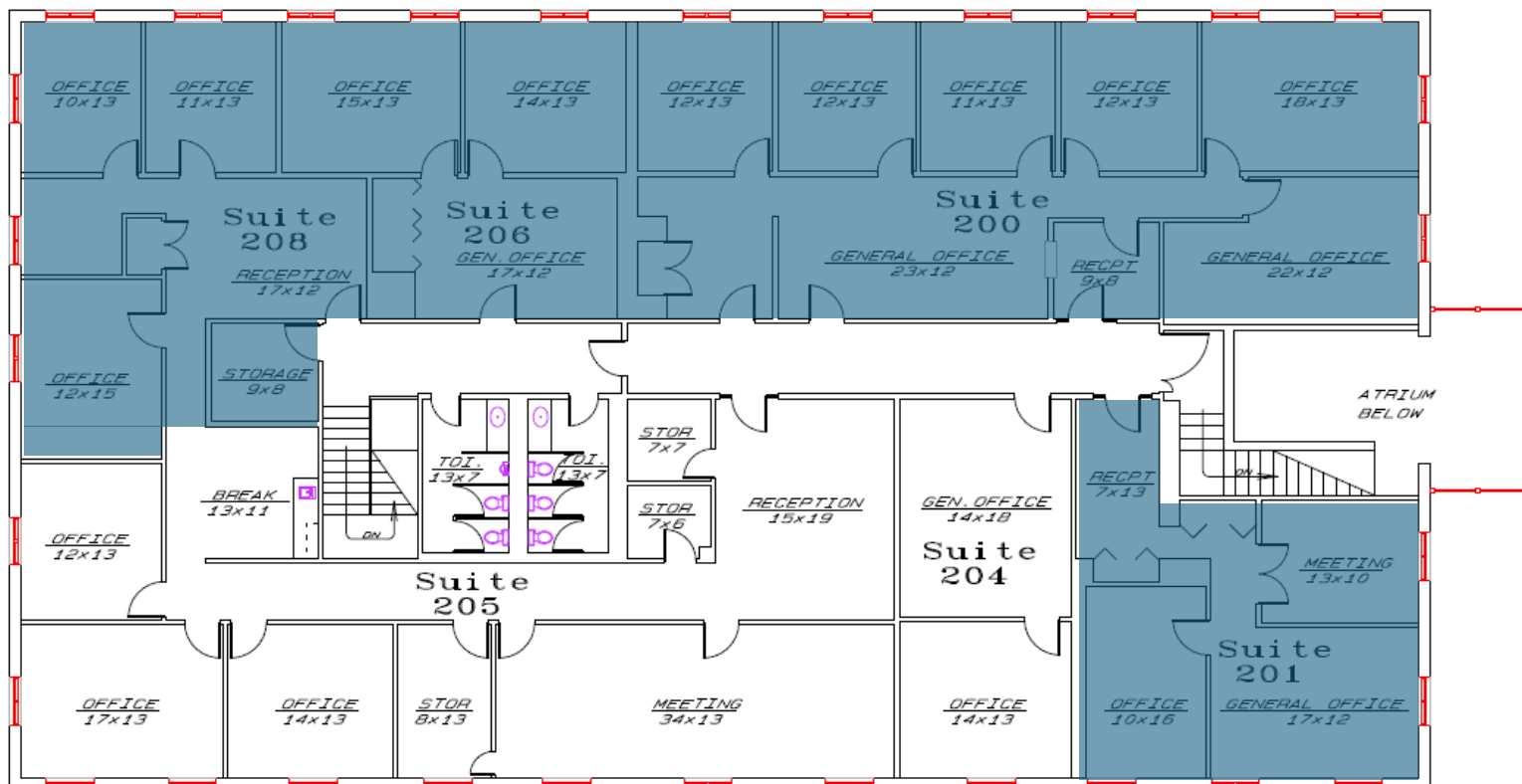
1240 W. Northwest Hwy., Palatine, IL 60067



OFFICE SPACE FOR SUBLEASE

1650 N. ARLINGTON HEIGHTS ROAD, ARLINGTON HEIGHTS, IL

FLOOR PLAN - SUITE 204-205
2,627 SF



Arlington Office Plaza
Tenant Plan Floor 2 8,400 SqFt

December 02, 2010

No Scale



NOTE:
PRELIMINARY DRAWINGS FOR PLANNING PURPOSES. ALL ROOM DIMENSIONS
HAVE BEEN ROUNDED TO THE NEAREST FOOT AND ARE APPROXIMATE. SQUARE
FOOTAGE SHALL BE FINALIZED AND VERIFIED PRIOR TO LEASE SIGNING.



**Chicago Land
Commercial**
REAL ESTATE

Leasing
Sales
Tenant Advisory
Management