



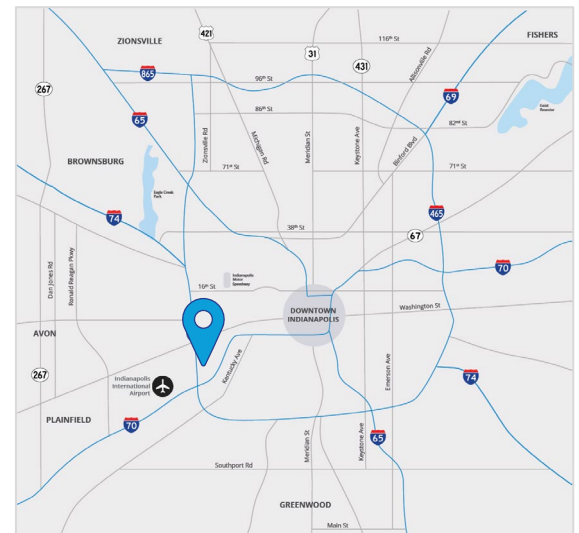
For Lease

# Directors Row Business Park

## 2485 Directors Row Indianapolis, IN

### Property Highlights

- 27,300 total SF
- 100% office space
- Built in 1985
- 12' - 20' clear height
- Ample parking for employees and clients
- Zoned I-3, CS
- Located near popular Park Fletcher Business Park
- Convenient access to I-465 and I-70
- Close proximity to Downtown Indianapolis and Indianapolis International Airport
- New Ownership investing significant capital into building & park improvements

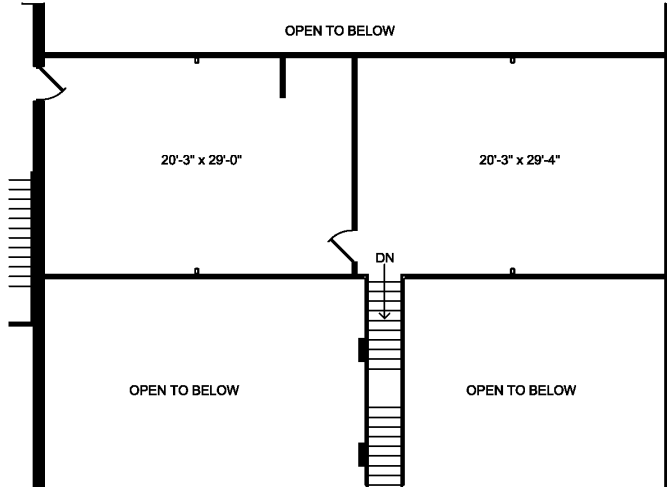


**Tyler Wilson** SIOR  
 +1 317 713 2137  
 tyler.wilson@colliers.com

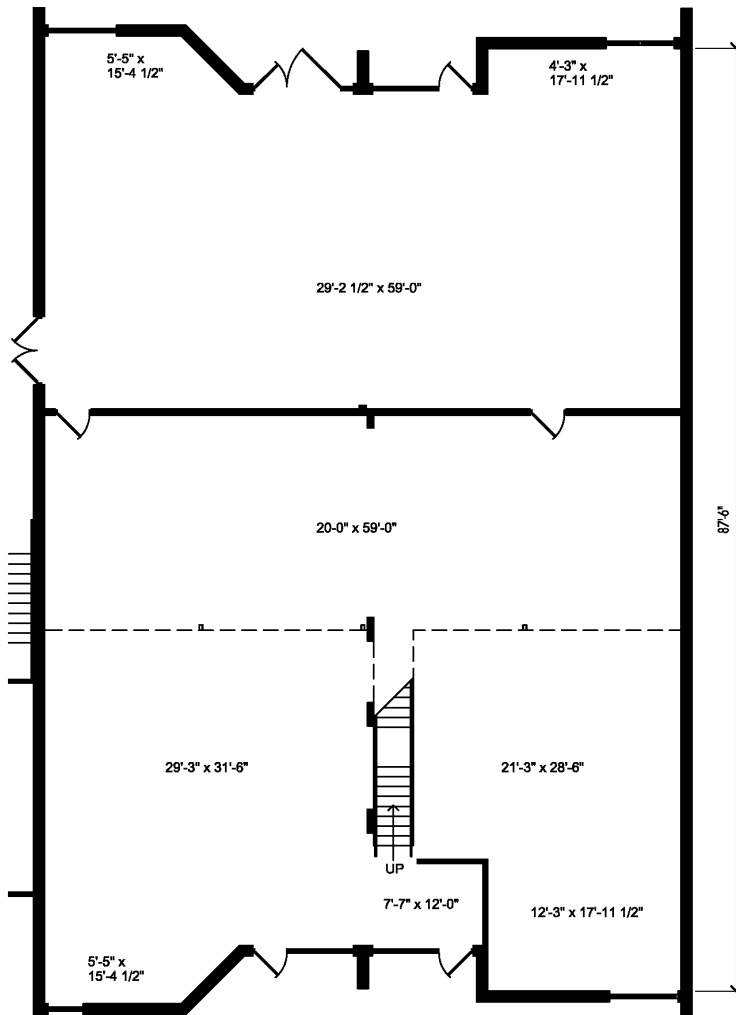
**Sydney Gabriel**  
 +1 317 713 2122  
 sydney.gabriel@colliers.com

Colliers Indianapolis  
[colliers.com](http://colliers.com)

# Site Plan



Mezzanine Office



## Suite C

Office SF	To Suit
Total SF	6,250

## Building Specs

- 100% office (2-story) with ability to convert portions to warehouse
- Open areas for cubicles, showroom or additional private offices
- Heavy parking on-site
- Mezzanine can be used for additional office or overflow storage
- 11,450 SF of contiguous space

Owned by:



ZIFF  
REAL ESTATE  
PARTNERS