

# 18415 Stuebner Airline Rd



Presented by  
The Nina Marino Realty Team

18415 Stuebner Airline Rd, Spring, TX 77379



**Price: \$8,500,000**

Great Commercial Land located on Stuebner Airline with 1409 feet of frontage Road. 23.133 Acres! Curb cut in place. Curb/Gutter/Sidewalk, Electricity, Gas, Irrigation, Sewer, Streets, Telephone, Water. MUD annexation approval granted. Proposed Use - Apartment Units - Senior, Commercial, Distribution, Industrial, Industrial Park, Mixed Use, Multifamily, Office Park, Retail! Houston George Bush Intercontinental Airport 30 minutes, 19.5 miles.

Call The Nina Marino Realty Team for more information! 281-364-3773

# 18415 Stuebner Airline Rd

18415 Stuebner Airline Rd, Spring, TX 77379



Great Commercial Land located on Stuebner Airline with 1409 feet of frontage Road. 23.133 Acres! Curb cut in place. Curb/Gutter/Sidewalk, Electricity, Gas, Irrigation, Sewer, Streets, Telephone, Water. MUD annexation approval granted. Proposed Use - Apartment Units - Senior, Commercial, Distribution, Industrial, Industrial Park, Mixed Use, Multifamily, Office Park, Retail! Houston George Bush Intercontinental Airport 30 minutes, 19.5 miles.

Call The Nina Marino Realty Team for more information! 281-364-3773

Ideal Location for Retail on the Frontage with Townhomes or Small Apartment Complex behind!

1409 feet of frontage

Over 23 acres



**Nina Marino**

[sales@ninamarino.com](mailto:sales@ninamarino.com)

(281) 364-3773

**The Nina Marino Realty Team**

2219 Sawdust Rd, Suite 1802

The Woodlands, TX 77380



# 18415 Stuebner Airline Rd

18415 Stuebner Airline Rd, Spring, TX 77379

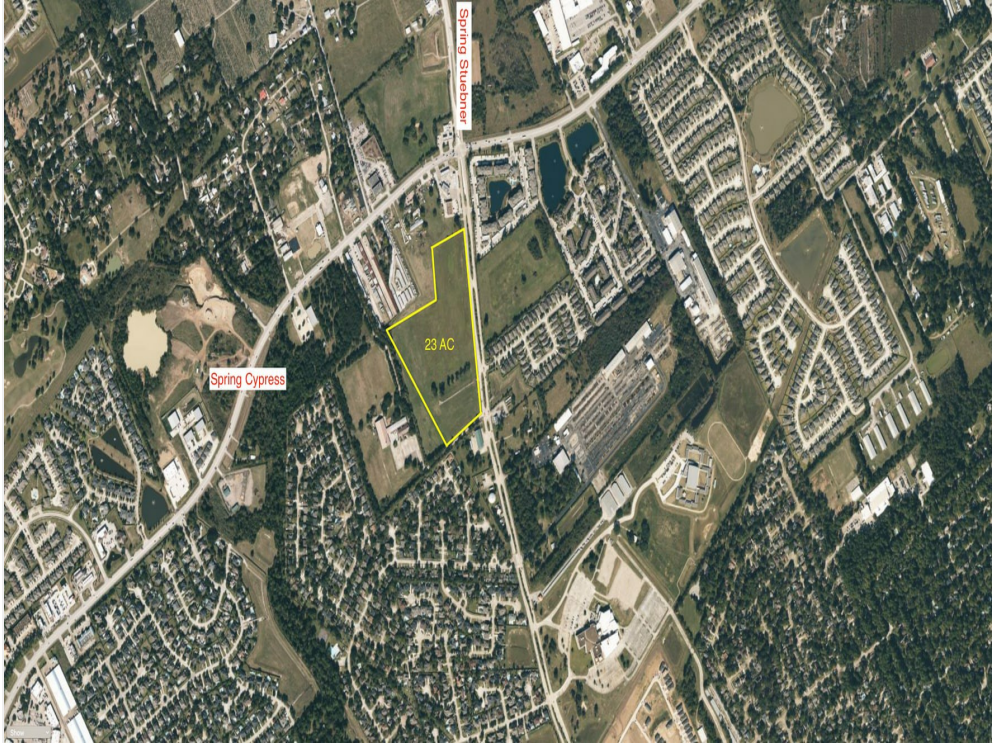
# 18415 Stuebner Airline Rd

18415 Stuebner Airline Rd, Spring, TX 77379

## Property Photos



Building Photo

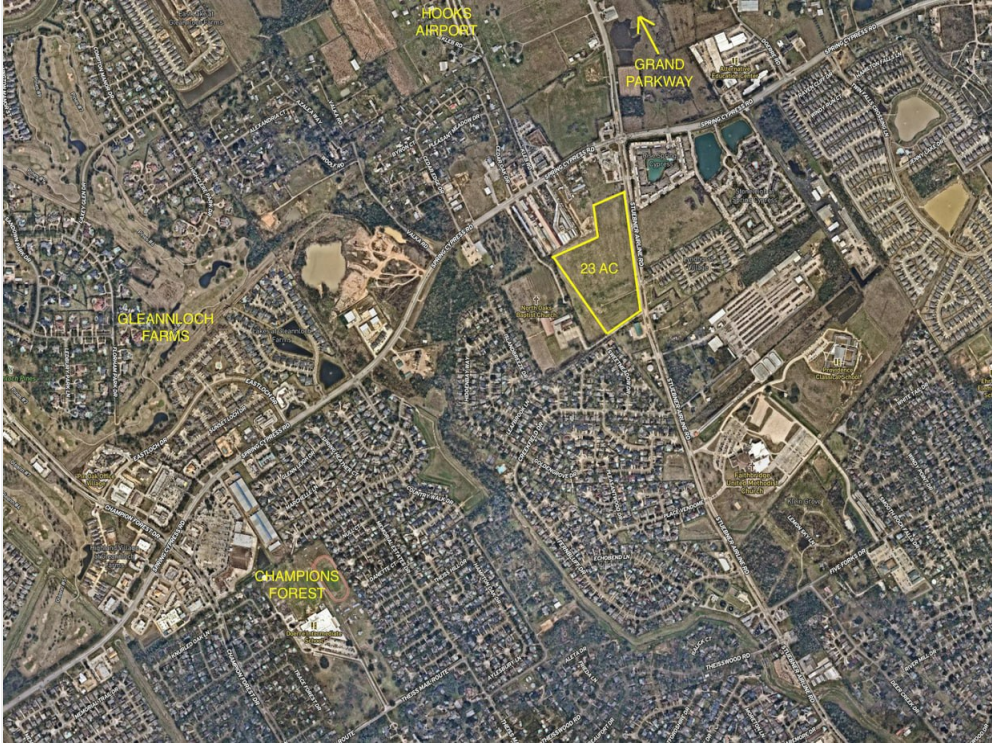


Building Photo

# 18415 Stuebner Airline Rd

18415 Stuebner Airline Rd, Spring, TX 77379

## Property Photos



Building Photo

# 18415 Stuebner Airline Rd

18415 Stuebner Airline Rd, Spring, TX 77379

## Location

