

# 7428 Melrose Lane

Oklahoma City, OK 73127

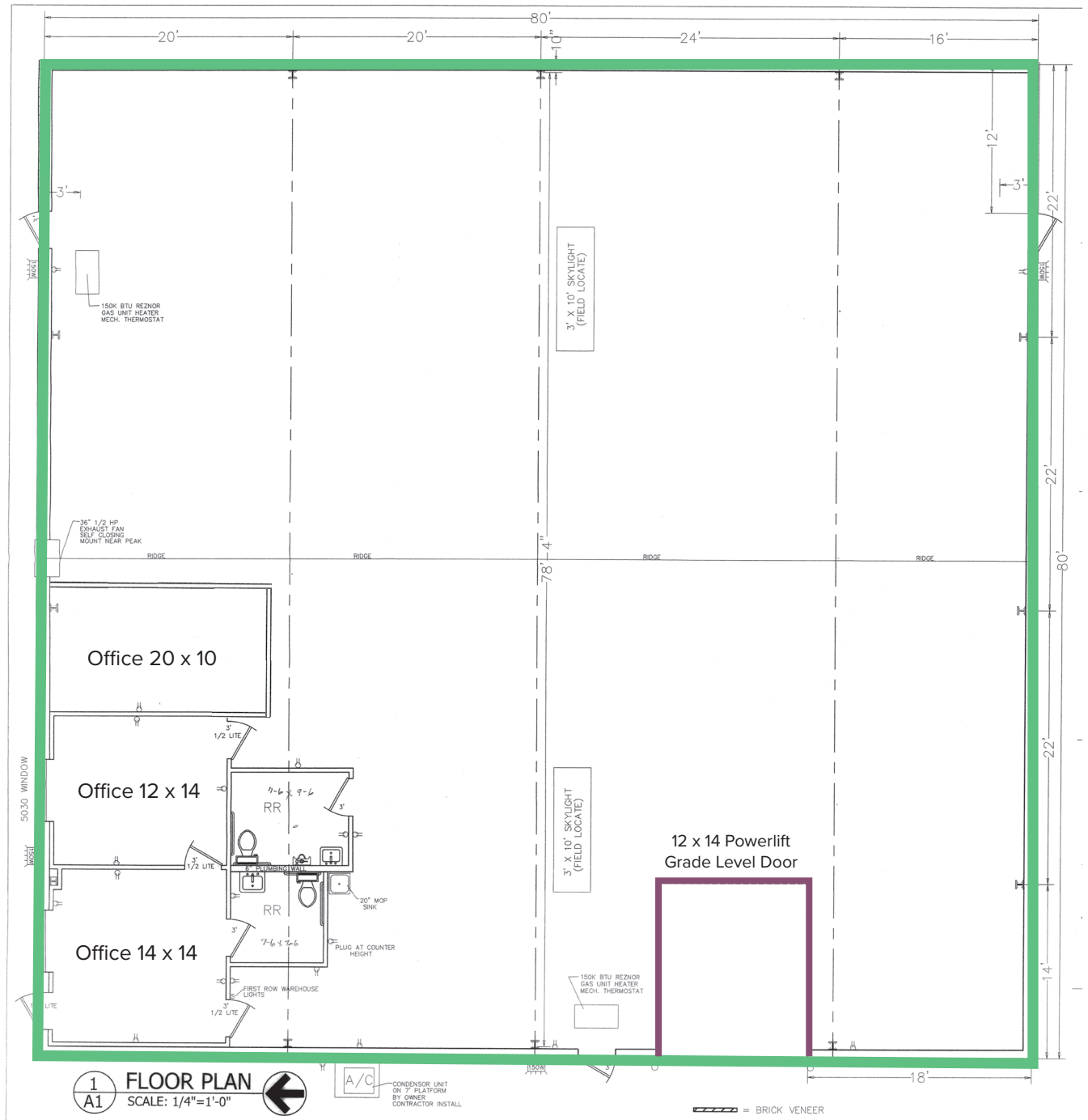


**NEW Lower Lease Rate: \$6.50/SF Gross**

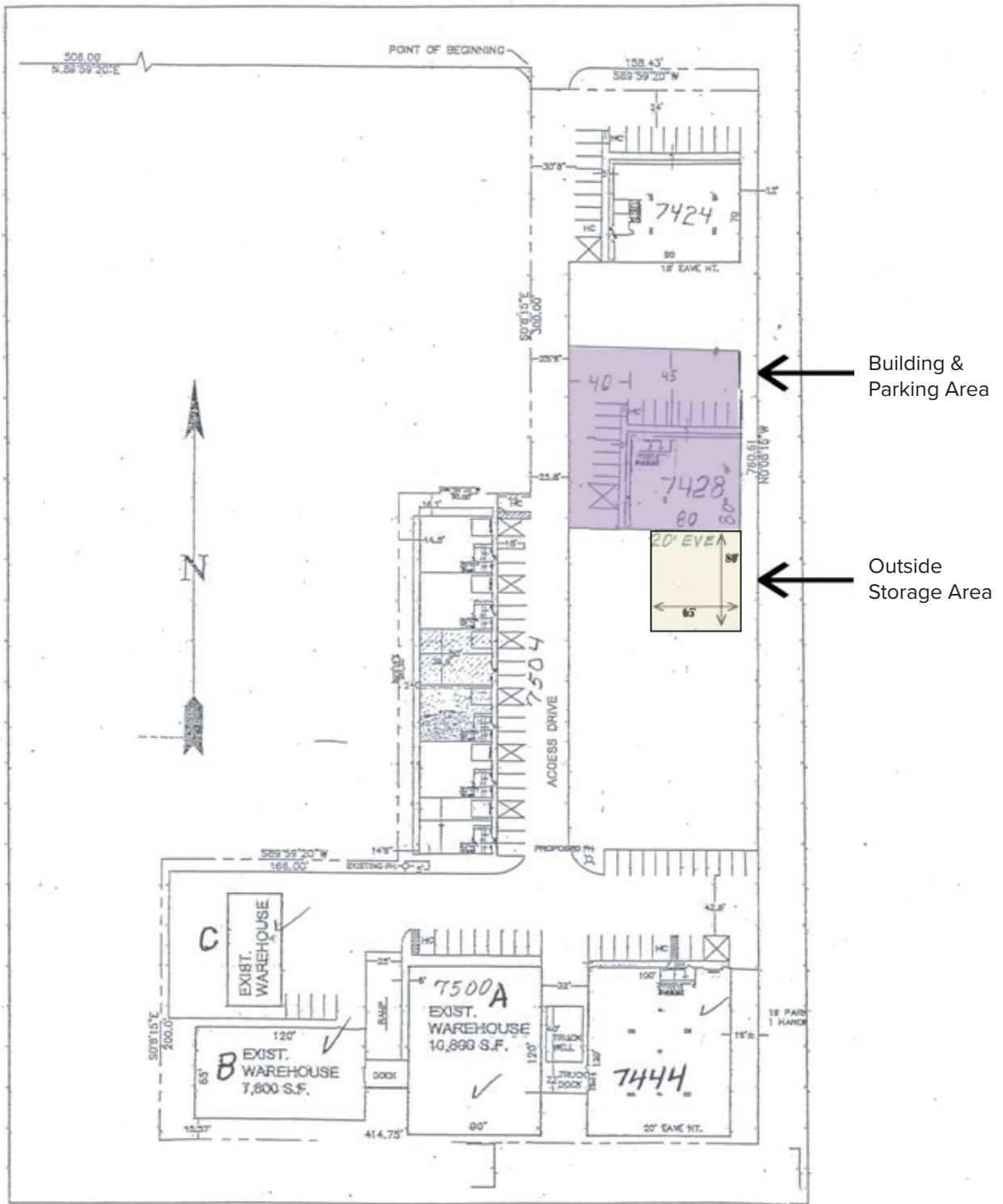
## Property Highlights

- + Building Size: 6,400± SF
- + Land Size: 0.3± Acres
- + 2 private offices and 2 restrooms
- + Construction Type: Metal/Brick
- + Zoning: I-3 Heavy Industrial
- + Clear Height: 20'
- + (1) 12' x 14' Powerlift Grade Level Door
- + Clear Span
- + High efficiency T-5 fluorescent lighting
- + Power: 200 Amp, 220 Volt, 3-phase
- + Located less than one mile north of I-40 between Rockwell and Council in the southwest area of Oklahoma City

# Floor Plan



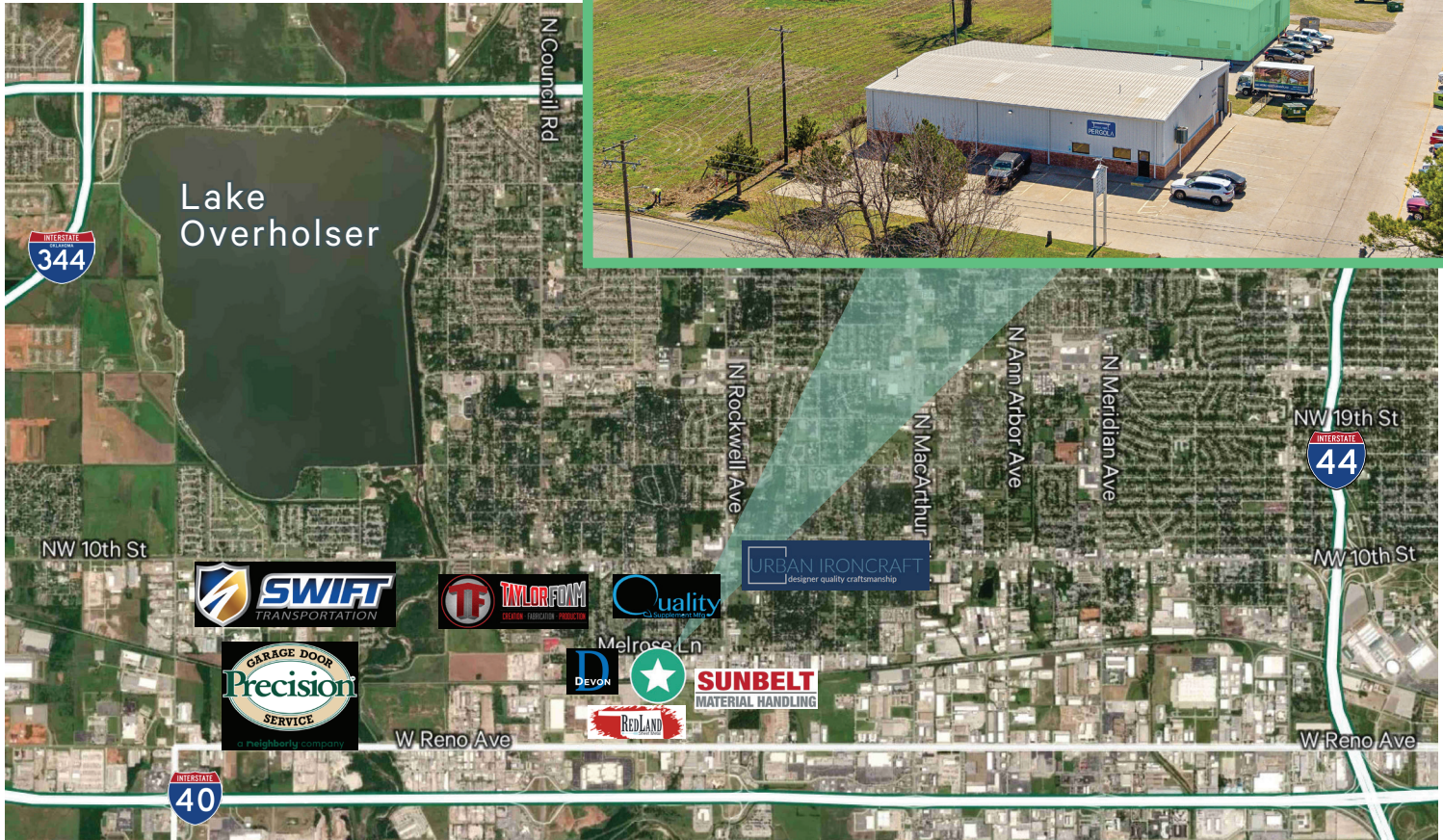
# Site Plan



# Photos



## Vicinity Map



## Contact Us

**Randy Lacey, SIOR**  
Senior Vice President  
+1 405 607 6062  
randy.lacey@cbre.com

**Chris Zach, SIOR, CPA**  
Vice President  
+1 405 607 6313  
chris.zach@cbre.com

© 2025 CBRE, Inc. All rights reserved. This information has been obtained from sources believed reliable, but has not been verified for accuracy or completeness. You should conduct a careful, independent investigation of the property and verify all information. Any reliance on this information is solely at your own risk. CBRE and the CBRE logo are service marks of CBRE, Inc. All other marks displayed on this document are the property of their respective owners, and the use of such logos does not imply any affiliation with or endorsement of CBRE. Photos herein are the property of their respective owners. Use of these images without the express written consent of the owner is prohibited.