

LAND FOR SALE

# 0 Claude Lee Rd

0 Claude Lee Rd, Fayetteville, NC 28306



for more information

DR. CHUCK MAXWELL

Broker

O: 910.829.1617 x203

C: 910.624.1966

chuck@grantmurrayre.com

KARISHMA NANDWANI

Director of Operations

O: 910.829.1617 x201

C: 910.728.1420

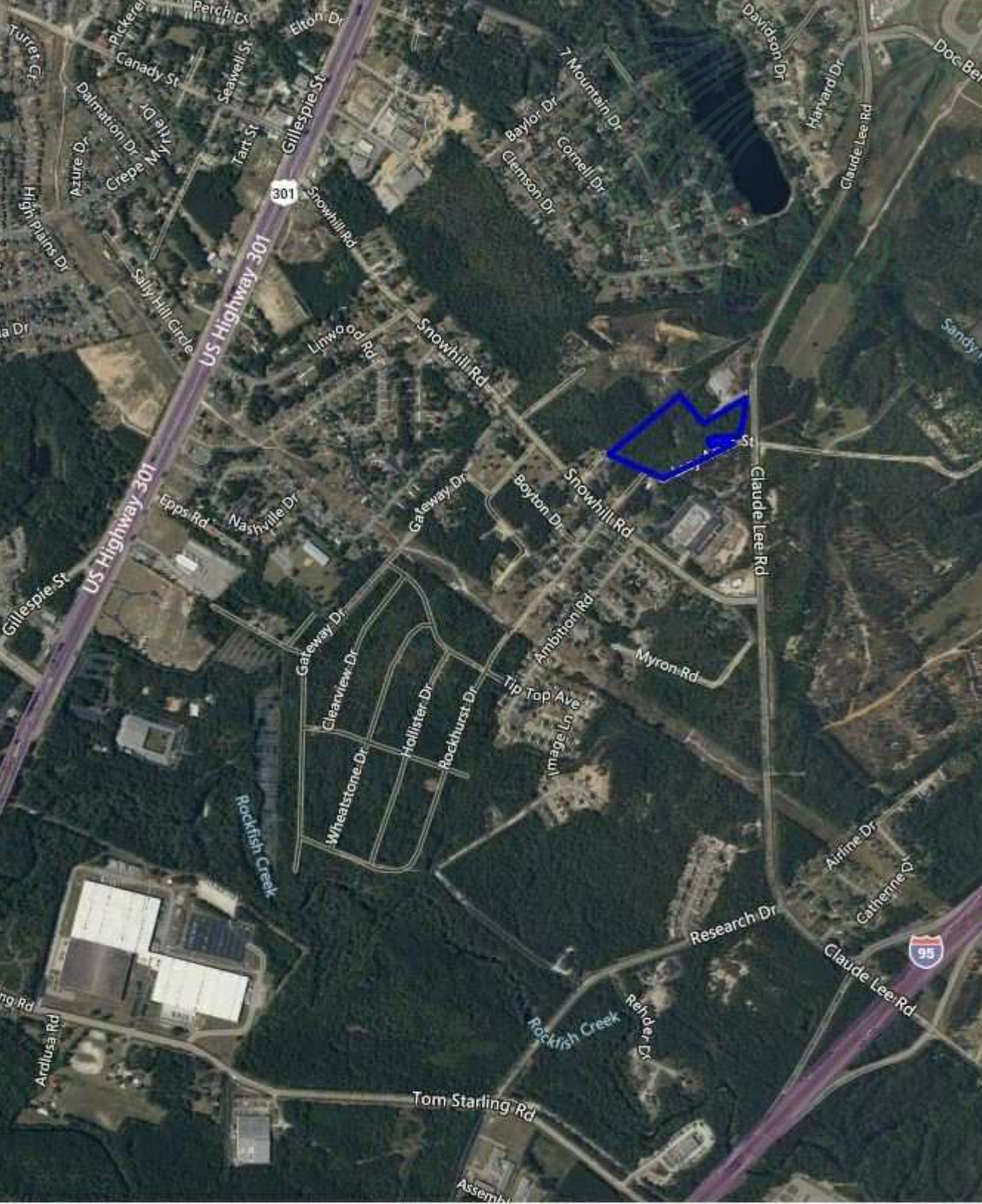
karishma@grantmurrayre.com



**Grant - Murray**  
REAL ESTATE, LLC

COMMERCIAL AND INVESTMENT BROKERAGE

150 N. McPherson Church Rd | Fayetteville, NC 28303 | [www.grantmurrayre.com](http://www.grantmurrayre.com)



# PROPERTY OVERVIEW

<b>Sale Price:</b>	\$60,000 / per acre
<b>Lot Size:</b>	9.63 Acres
<b>Year Built:</b>	1994
<b>Zoning:</b>	MP
<b>Price / Acre:</b>	\$60,000
<b>Market:</b>	Fayetteville

## property description

This industrial-zoned parcel offers significant development potential, spanning over several acres with direct frontage along Claude Lee Road. Zoned M(P), the land is suitable for a variety of manufacturing, warehousing, or industrial uses. While the property has access to water, sewer connections are currently unavailable, offering flexibility in infrastructure development. The site features some topography but is free from listed wetlands, giving it an advantageous starting point for construction. Additionally, Lazy Acres Road, a paved road, provides convenient entry into the property, enhancing accessibility for future operations or tenants.

**01**  
ENTER TEXT HERE...

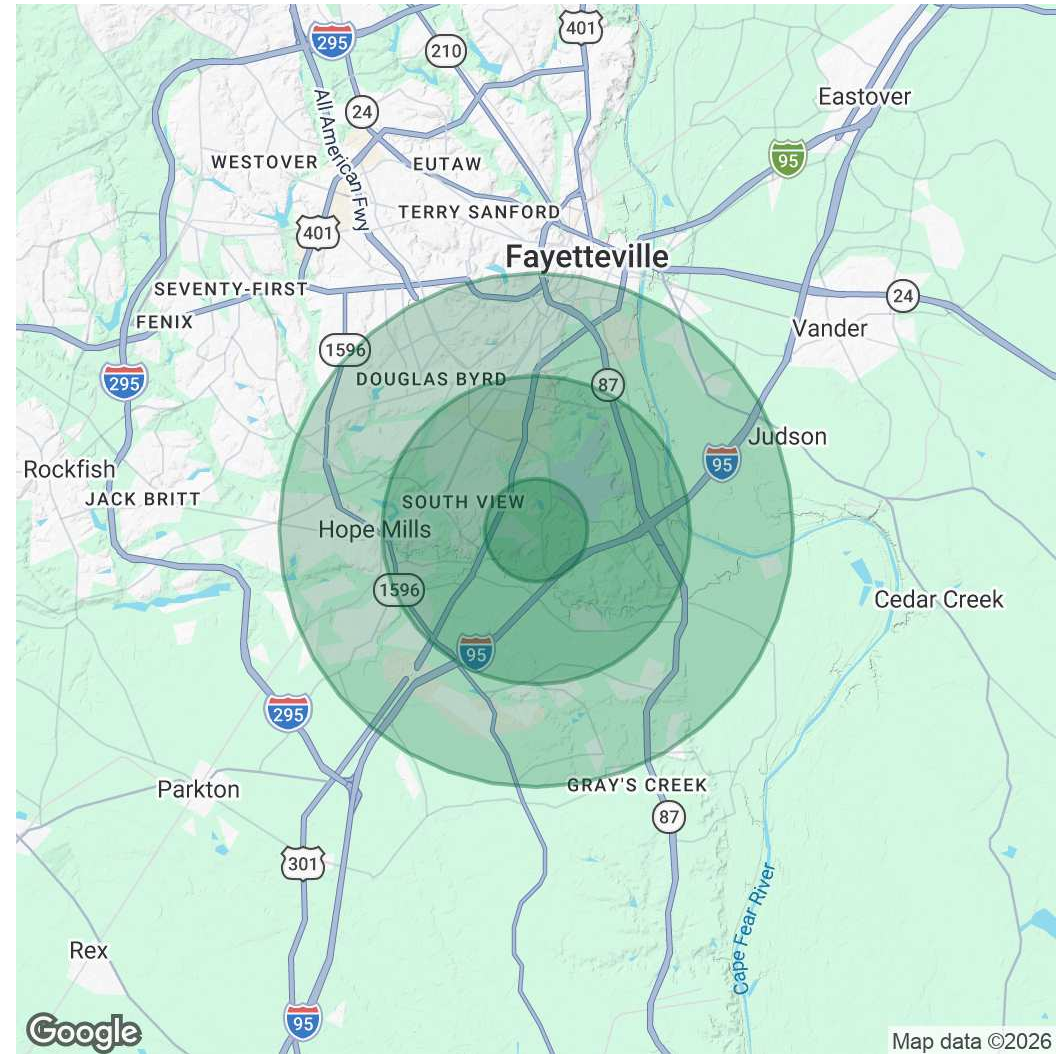
9+ Acres on Claude Lee Road  
**0 CLAUDE LEE RD, FAYETTEVILLE, NC 28306**

DEMOGRAPHICS MAP & REPORT

POPULATION	1 MILE	3 MILES	5 MILES
Total Population	1,870	21,263	71,836
Average Age	38	37	38
Average Age (Male)	36	35	37
Average Age (Female)	39	38	40

HOUSEHOLDS & INCOME	1 MILE	3 MILES	5 MILES
Total Households	703	8,079	28,250
# of Persons per HH	2.7	2.6	2.5
Average HH Income	\$79,753	\$72,041	\$73,793
Average House Value	\$196,443	\$189,363	\$199,188

*Demographics data derived from AlphaMap*



for more information

DR. CHUCK MAXWELL  
 Broker  
 O: 910.829.1617 x203  
 C: 910.624.1966  
 chuck@grantmurrayre.com

KARISHMA NANDWANI  
 Director of Operations  
 O: 910.829.1617 x201  
 C: 910.728.1420  
 karishma@grantmurrayre.com



**Grant - Murray**  
 REAL ESTATE, LLC  
 COMMERCIAL AND INVESTMENT BROKERAGE