

Owned by:



Industrial Space for Lease
Airlogistics II – Bldg 100
105 Forest Parkway, Ste 600

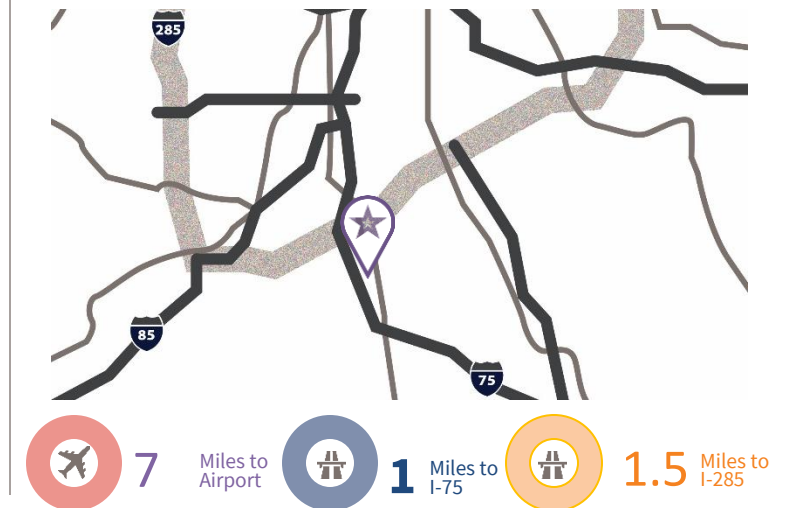


105 Forest Parkway, Ste 600, Forest Park, GA

Opportunity

- 25,454 SF available space
- 95,421 SF total building size
- 24' clear height
- 170' Bldg. Depth
- 40' x 40' bay size
- 9 DH with 2 Ramps

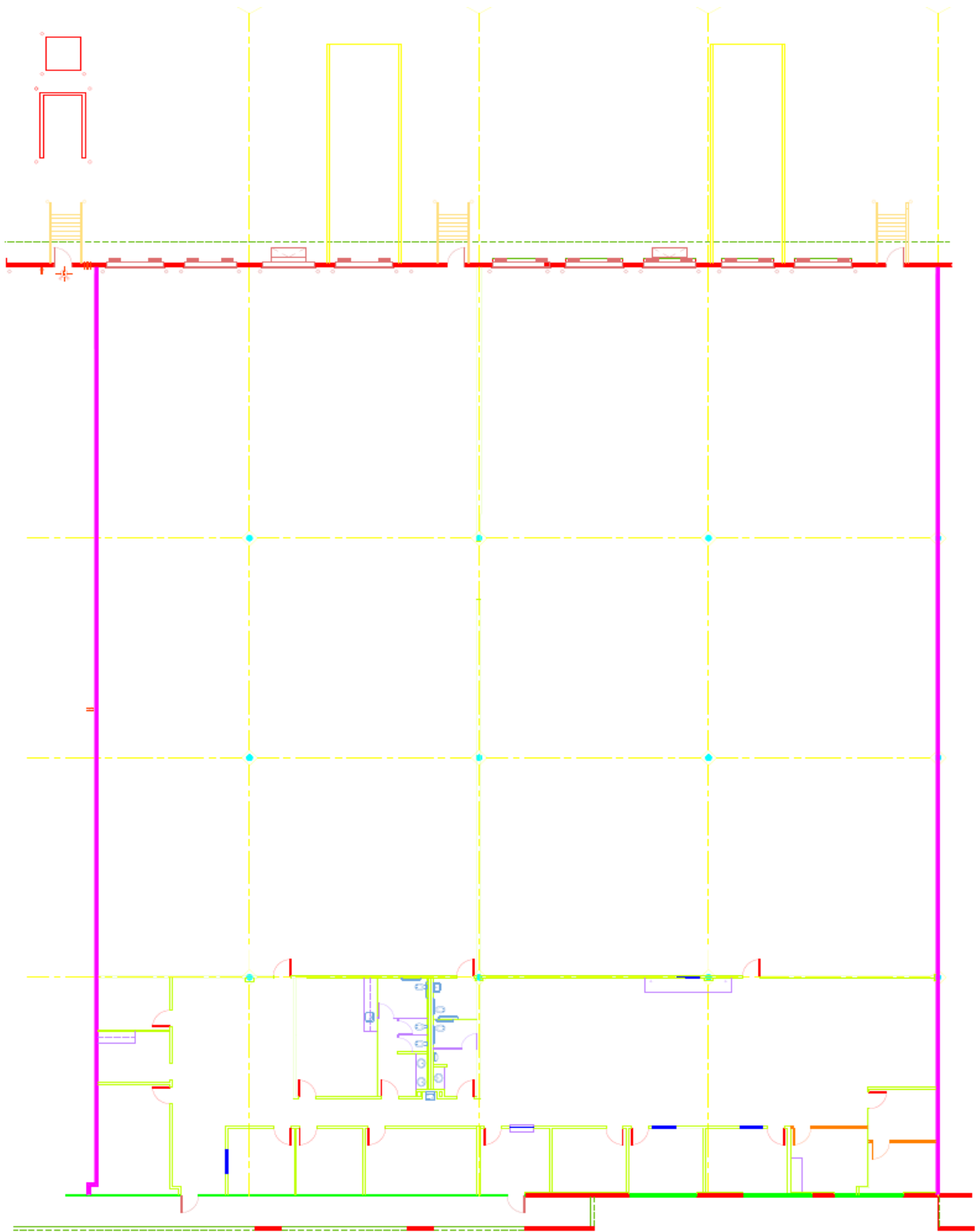
Location



**For further
information**

Chet Koenig
Principal
+1 770 916 6130

avisonyoung.com



**For further
information**

Chet Koenig
Principal
+1 770 916 6130
Chet.Koenig@avisonyoung.com

