

Industrial | For Lease

CBRE

902 N Iris Ave

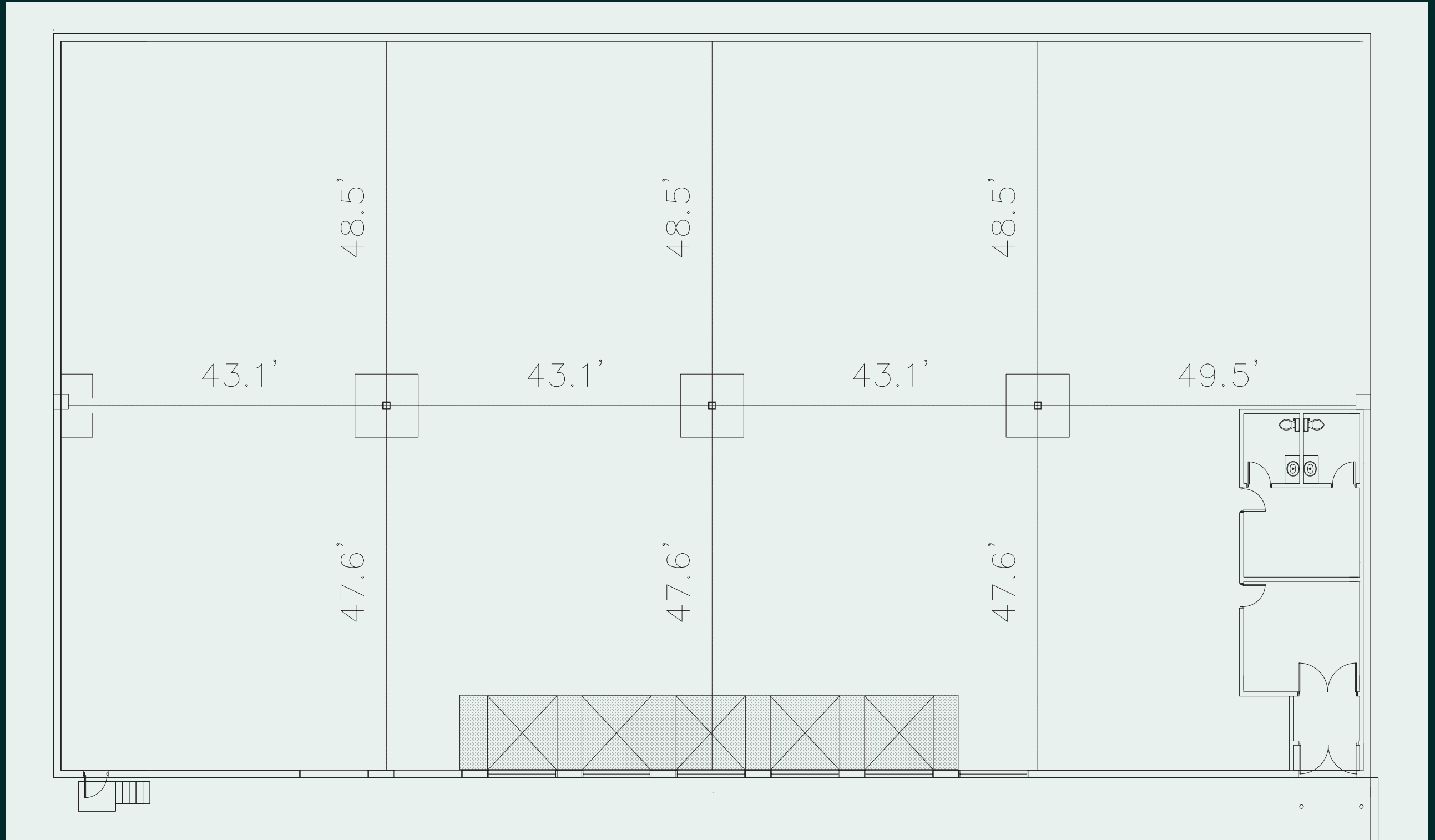
Baltimore, MD

Construction Complete - Available Now - 20,503 SF

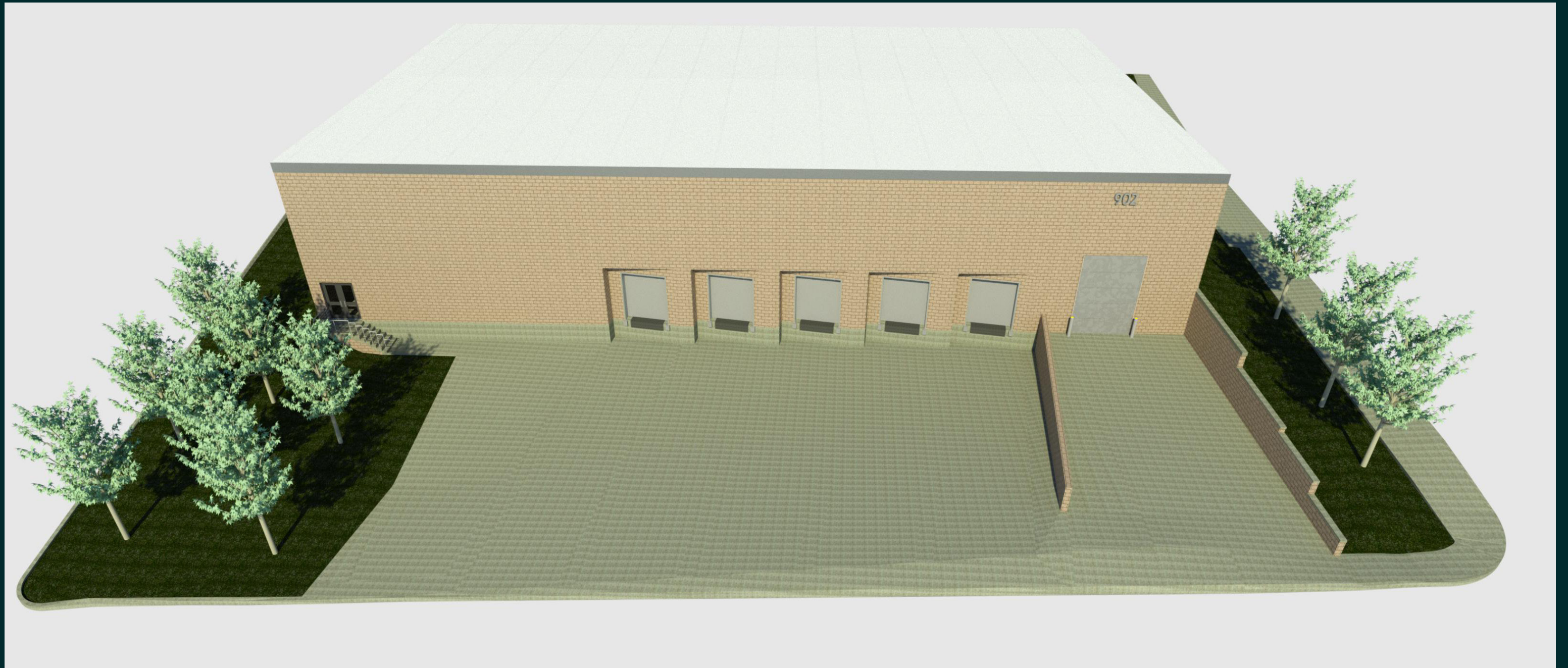


Building Highlights

- + 5 Loading Docks
- + 1 Drive-In
- + Motorized Doors
- + Hydraulic Pit Levelers
- + 6" Reinforced Super-flat Floor (FF 50 | FL 50)
- + Ceiling Height: 25' Clear
- + Split-face Concrete Masonry Walls
- + TPO Roof
- + 400-amp 3-phase 208V
- + 101' (L) x 203' (W) - 20,503 SF
- + Office Area: 2 Bathrooms and 2 Offices
- + Sprinkler: Dry System



5 Loading Docks
1 Drive-in



Direct Access to All Major Roadways

1

Mile to Route 40

1

Mile to Route 695

2.6

Miles to I-95

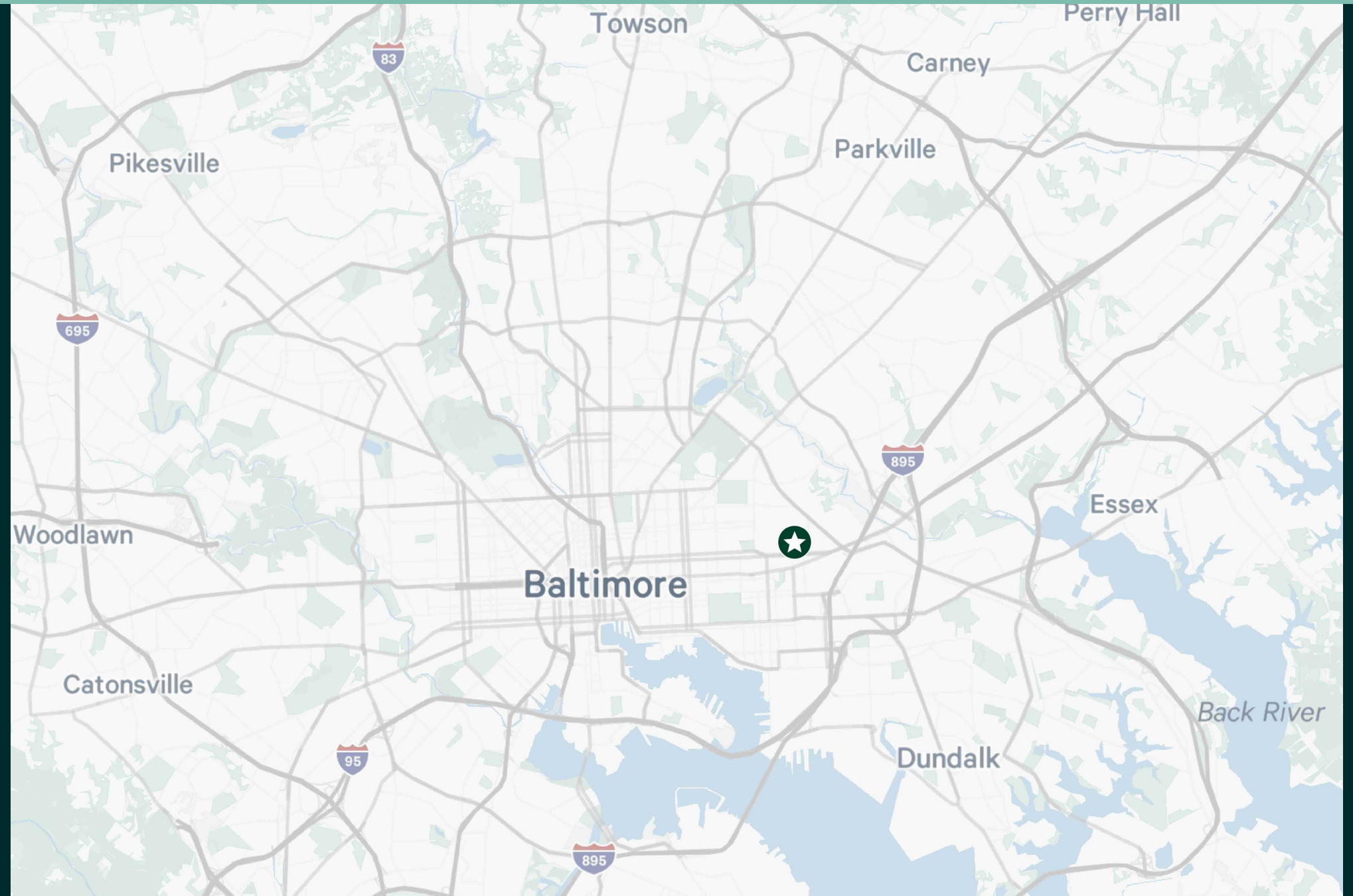
3.7

Miles to the Port of Baltimore

Contact Us

Thomas Galvin
First Vice President
+1 410 259 7230
thomas.galvin@cbre.com

Jon Casella
Executive Vice President
+1 443 386 9122
jonathan.casella@cbre.com



© 2025 CBRE, Inc. All rights reserved. This information has been obtained from sources believed reliable, but has not been verified for accuracy or completeness. You should conduct a careful, independent investigation of the property and verify all information. Any reliance on this information is solely at your own risk. CBRE and the CBRE logo are service marks of CBRE, Inc. All other marks displayed on this document are the property of their respective owners, and the use of such logos does not imply any affiliation with or endorsement of CBRE. Photos herein are the property of their respective owners. Use of these images without the express written consent of the owner is prohibited.