



THREE BROADWAY EXECUTIVE PARK

6501 N BROADWAY, OKLAHOMA CITY, OK 73116

MEET BROADWAY EXECUTIVE PARK

One Broadway Executive Park is an upscale business park with handsome buildings, extensive landscaping and ample, lighted parking next to each building to provide a positive corporate image.

At Northwest 63rd Street and the Broadway Extension, Broadway Executive Park provides tenants prominent visibility and identity, convenient ingress and egress and excellent access to all destinations within the metropolitan area. Remodeled in 2024.

PROPERTY INFORMATION

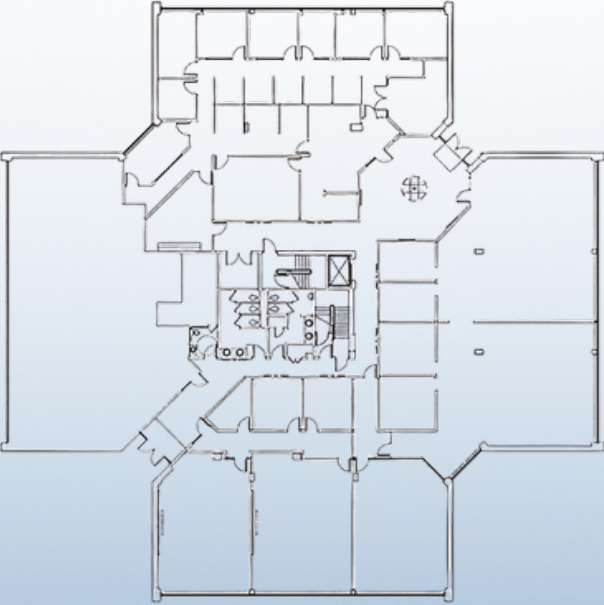
Year Built Renovated	1980 2024
Floors	3
Total Square Feet	45,256 sf
Available Square Feet	1,736 sf
Rate	\$17.50 + Full Service
Class	B
Submarket	North
Parking	Abundant Surface

HIGHLIGHTS

- Efficiency and flexibility are achieved in office space layout | Signage available
- On-site maintenance engineer
- Well-lit parking adjacent to each building
- 22-acre park has attractive landscaping that is well-maintained throughout the year
- Local Ownership | Local Management | Local team of Engineers
- Security: After-hours key-pad access | Roaming Security Guard
- Building Conference Center



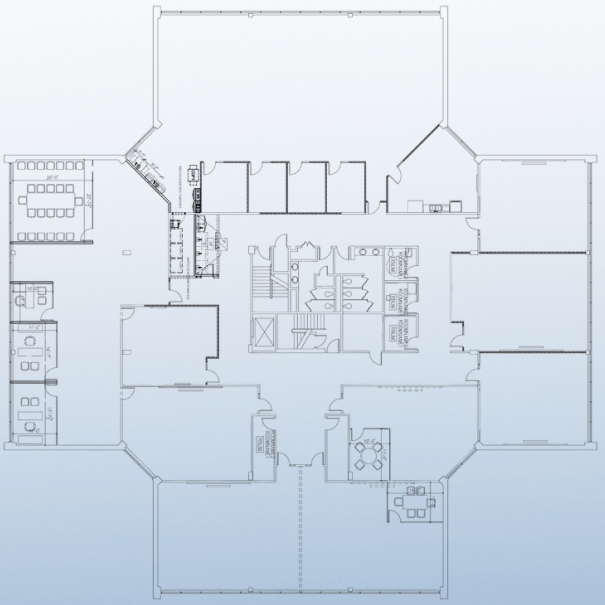
AVAILABLE SPACE



FIRST FLOOR



SECOND FLOOR



THIRD FLOOR
• Suite 315 | 1,736 RSF

BROADWAY EXECUTIVE

WIGGIN
PROPERTIES, LLC

CONTACT



NICK BENTLEY

VP of Brokerage
nbentley@wigginprop.com
405.408.5428



IAN SIOUX

Advisor
iansioux@wigginprop.com
405.659.6782