



**> FOR LEASE - INDUSTRIAL SPACE**

## FM Airport Industrial

18-3500 Sapræe Creek Trail, Fort McMurray, AB

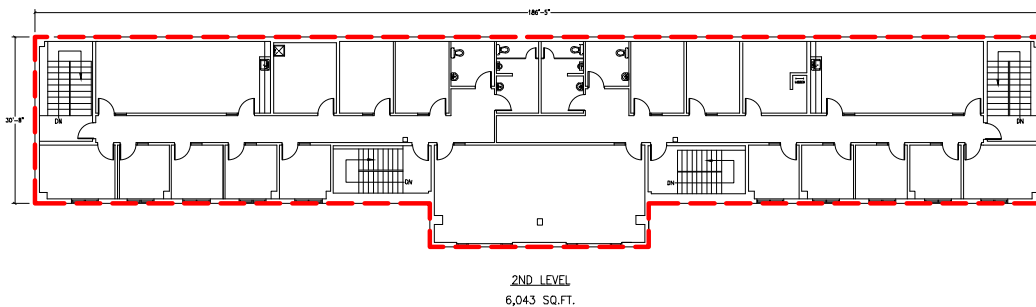
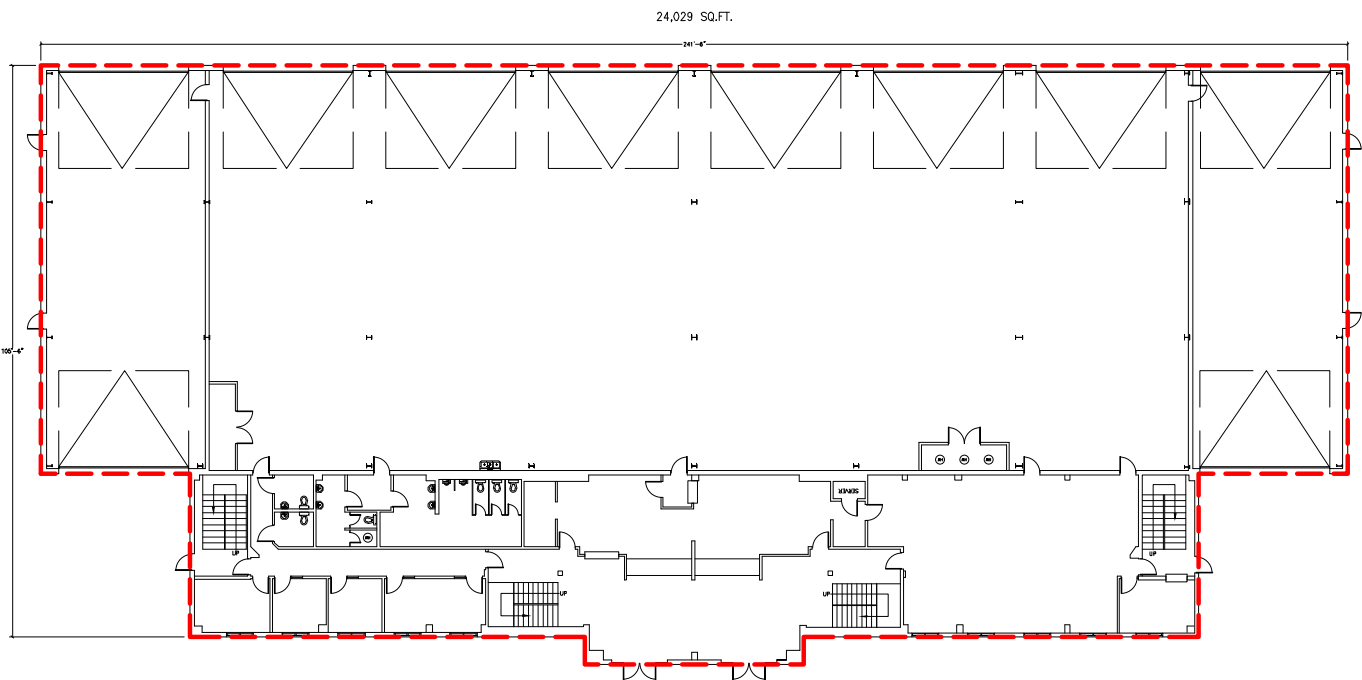
MAREENA BOBEY  
VP OPERATIONS  
780.430.0529  
EDMONTON, AB  
mareena.bobey@camgill.com

CAMGILL DEVELOPMENT CORP  
201, 9894 42 Avenue  
Edmonton, AB T6E 5V5  
Main: 780.430.0529  
www.camgill.com



## Premises

Size:	30,072 square feet
Lot:	5.25 acres (approx.)
Lease Rate:	Market
TIA:	Negotiable
Op Costs:	\$7.88/sf (est.)
Available:	Immediately
Yard:	Graveled, Fenced
Cranes:	2 x 5 ton



MAREENA BOBEY  
 VP OPERATIONS  
 780.430.0529  
 EDMONTON, AB  
 mareena.bobey@camgill.com

CAMGILL DEVELOPMENT CORP  
 201, 9894 42 Avenue  
 Edmonton, AB T6E 5V5  
 Main: 780.430.0529  
 www.camgill.com