



# CRESTWOOD

## FLEX PROPERTIES

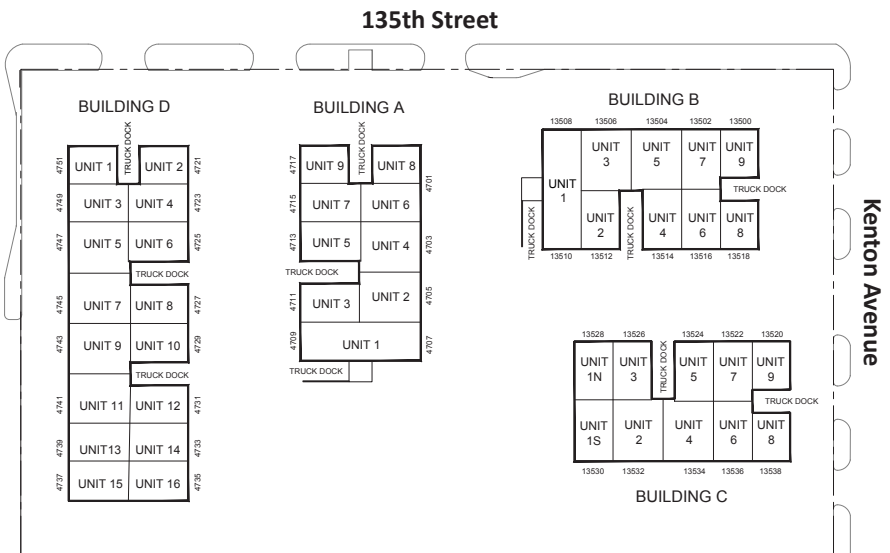
Crestwood Flex Properties is a four-building complex that offers great visibility from the intersection of Cicero and 135th Street. It is conveniently located within minutes of I-294. The flex space options range from 2,900 to 6,000 square feet and offer loading docks, drive-in doors, and ample parking.

### Site Overview

- Total RSF: 131,733
- Available RSF: 2,900
- Zoning: Light Industrial

### Details

- Ample parking
- 18' clear ceilings
- Immediate occupancy



For more information or to arrange a tour, please contact:

#### Jesse Miranda

Vice President, Mission Critical, Infrastructure, & Advanced Manufacturing  
 jesse.miranda@avisonyoung.com  
 +1 773 600 0347

#### Ronan Remandaban

Principal, Mission Critical, Infrastructure, & Advanced Manufacturing  
 ronan.remandaban@avisonyoung.com  
 +1 312 961 3592



PROFESSIONALLY OWNED AND MANAGED BY

**CLEAR HEIGHT**  
 PROPERTIES



# FOR LEASE

## Building **D**

4721-4739 W 135th Street

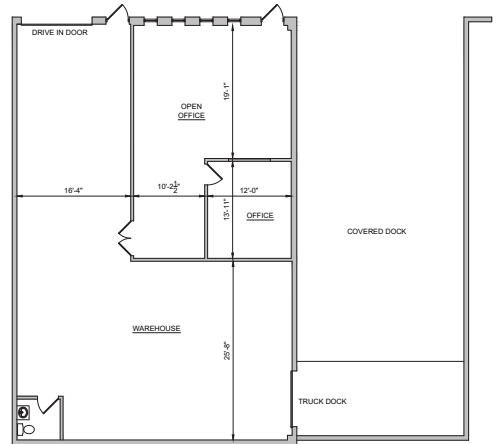
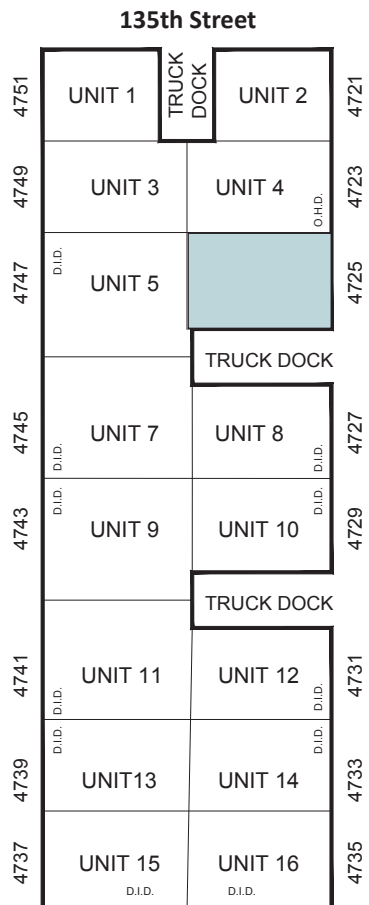
### Building Features

- 46,250 RSF
- 18' clear ceilings

### Availabilities

Unit 4725 | 2,900 RSF

- Warehouse with office space
- 1 exterior dock
- 1 drive-in door
- Immediate occupancy
- Asking rate: STO



For more information or to arrange a tour, please contact:

**Jesse Miranda**

Vice President, Mission Critical, Infrastructure, & Advanced Manufacturing  
jesse.miranda@avisonyoung.com  
+1 773 600 0347

**Ronan Remandaban**

Principal, Mission Critical, Infrastructure, & Advanced Manufacturing  
ronan.remandaban@avisonyoung.com  
+1 312 961 3592

