



For Lease

1105 Mente Drive Savannah, GA 31415

- ±3,200 SF warehouse building with office space
- 1 drive-in door
- 18' clear height
- Mezzanine storage
- ±0.15 AC fenced outdoor storage
- Close proximity to the Port of Savannah - less than 1 mile from Gate 3 at Ocean terminal and 4.0 miles from Garden City Terminal
- Located 1 mile from Downtown Savannah
- Unparalleled access to Interstate 16 and Interstate 95
- **Available Now**

Lease Rate:

Please Inquire

George Brown

Associate

Office +1 912 307 2277

george.brown@colliers.com

Ryan Bergman

Associate

Office +1 912 306 3188

ryan.bergman@colliers.com

David Sink, SIOR

Principal

Office +1 912 662 8010

david.sink@colliers.com



Colliers | Savannah

545 E. York Street, Savannah, GA

+1 912 233 7111

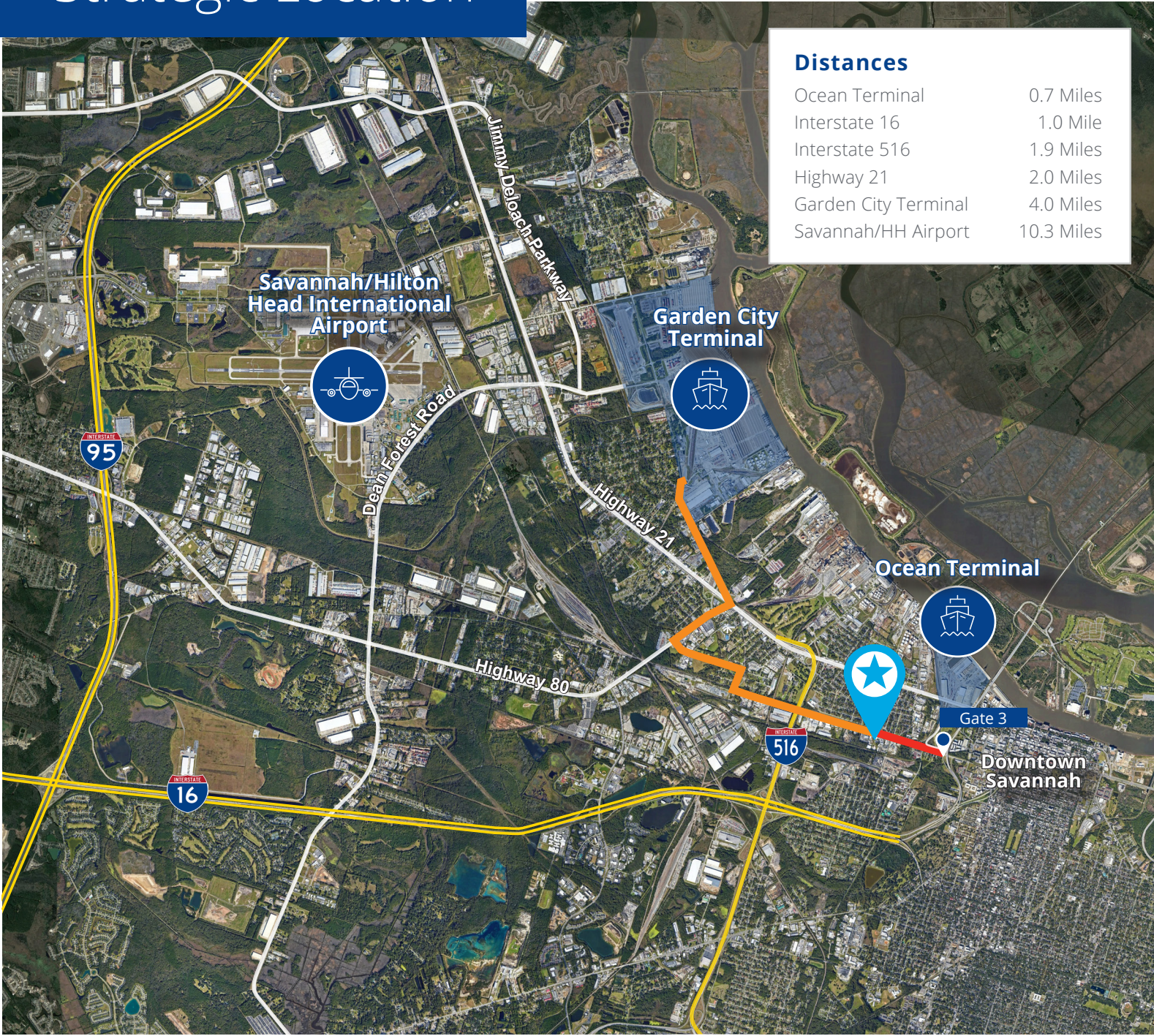
colliers.com/savannah

Accelerating success.

Interior Images



Strategic Location



Contact



George Brown
Associate
Office +1 912 307 2277
george.brown@colliers.com

Ryan Bergman
Associate
Office +1 912 306 3188
ryan.bergman@colliers.com

David Sink, SIOR
Principal
Office +1 912 662 8010
david.sink@colliers.com

Colliers | Savannah
545 E. York Street, Savannah, GA
+1 912 233 7111
colliers.com/savannah

This document has been prepared by Colliers International for advertising and general information only. Colliers International makes no guarantees, representations or warranties of any kind, expressed or implied, regarding the information including, but not limited to, warranties of content, accuracy and reliability. Any interested party should undertake their own inquiries as to the accuracy of the information. Colliers International excludes unequivocally all inferred or implied terms, conditions and warranties arising out of this document and excludes all liability for loss and damages arising there from. This publication is the copyrighted property of Colliers International and/or its licensor(s). ©2026. All rights reserved.