



**Keegan & Coppin**  
COMPANY, INC.

FOR LEASE

7552 REDWOOD BLVD  
NOVATO, CA

General Commercial Land  
for Lease



REPRESENTED BY:

**NATHAN BALLARD, PARTNER**  
LIC # 01743417 (415) 461-1010, EXT 116  
[NBALLARD@KEEGANCOPPIN.COM](mailto:NBALLARD@KEEGANCOPPIN.COM)

**JOHN MOHUN, AGENT**  
LIC # 02232254 (415) 461-1010, EXT 126  
[JMOHUN@KEEGANCOPPIN.COM](mailto:JMOHUN@KEEGANCOPPIN.COM)



# COMMERCIAL LAND FOR LEASE



7552 REDWOOD BLVD  
NOVATO, CA

COMMERCIAL LAND  
FOR LEASE

## PROPERTY INFORMATION

### HIGHLIGHTS

- 18,000+/- sf total land available
- Can be leased as a whole or subdivided into smaller lots
- General Commercial (GC) zoning allows for a wide range of uses
- Flexible layout for multiple tenant configurations
- Strong frontage along Redwood Blvd
- Easy access to Highway 101

### AVAILABLE SPACE

**Total Land:** 18,000+/- sq ft

**Lot 1:** 15,000+/- sq ft

**Lot 2:** 3,000+/- sq ft

### DESCRIPTION

Rare opportunity to lease up to ±18,000 square feet of land along Redwood Blvd in Novato. The site can be leased in its entirety or subdivided into smaller parcels to accommodate a range of tenant needs.

Zoned General Commercial, the property offers flexibility for a variety of commercial uses, making it an attractive option for tenants seeking functional outdoor space in a well-located, high-visibility corridor. Potential uses may include parking, nursery or garden-related uses, outdoor display or sales, and other similar commercial applications, subject to City of Novato approval.

With its flexible configuration and ability to scale space, the property is well suited for both smaller users and larger operators looking to establish or expand their presence in the North Bay.

### LEASE TERMS

#### Rate

\$0.40 psf

#### Terms

1 - 5 year lease term

Industrial Gross

#### Zoning

GC

Keegan & Coppin Co., Inc.  
101 Larkspur Landing Circle, Ste. 112  
Larkspur, CA 94939  
www.keegancoppin.com  
(415) 461-1010

The above information, while not guaranteed, has been secured from sources we believe to be reliable. Submitted subject to error, change or withdrawal. An interested party should verify the status of the property and the information herein.

REPRESENTED BY:

**NATHAN BALLARD, PARTNER**  
LIC # 01743417 (415) 461-1010, EXT 116  
NBALLARD@KEEGANCOPPIN.COM

**JOHN MOHUN, PARTNER**  
LIC # 02232254 (415) 461-1010, EXT 126  
JMOHUN@KEEGANCOPPIN.COM



# PHOTOS



7552 REDWOOD BLVD.  
NOVATO, CA

COMMERCIAL LAND  
FOR LEASE



**REPRESENTED BY:**

**NATHAN BALLARD, PARTNER**  
LIC # 01743417 (415) 461-1010, EXT 116  
NBALLARD@KEEGANCOPPIN.COM

**JOHN MOHUN, PARTNER**  
LIC # 02232254 (415) 461-1010, EXT 126  
JMOHUN@KEEGANCOPPIN.COM

The above information, while not guaranteed, has been secured from sources we believe to be reliable. Submitted subject to error, change or withdrawal. An interested party should verify the status of the property and the information herein.

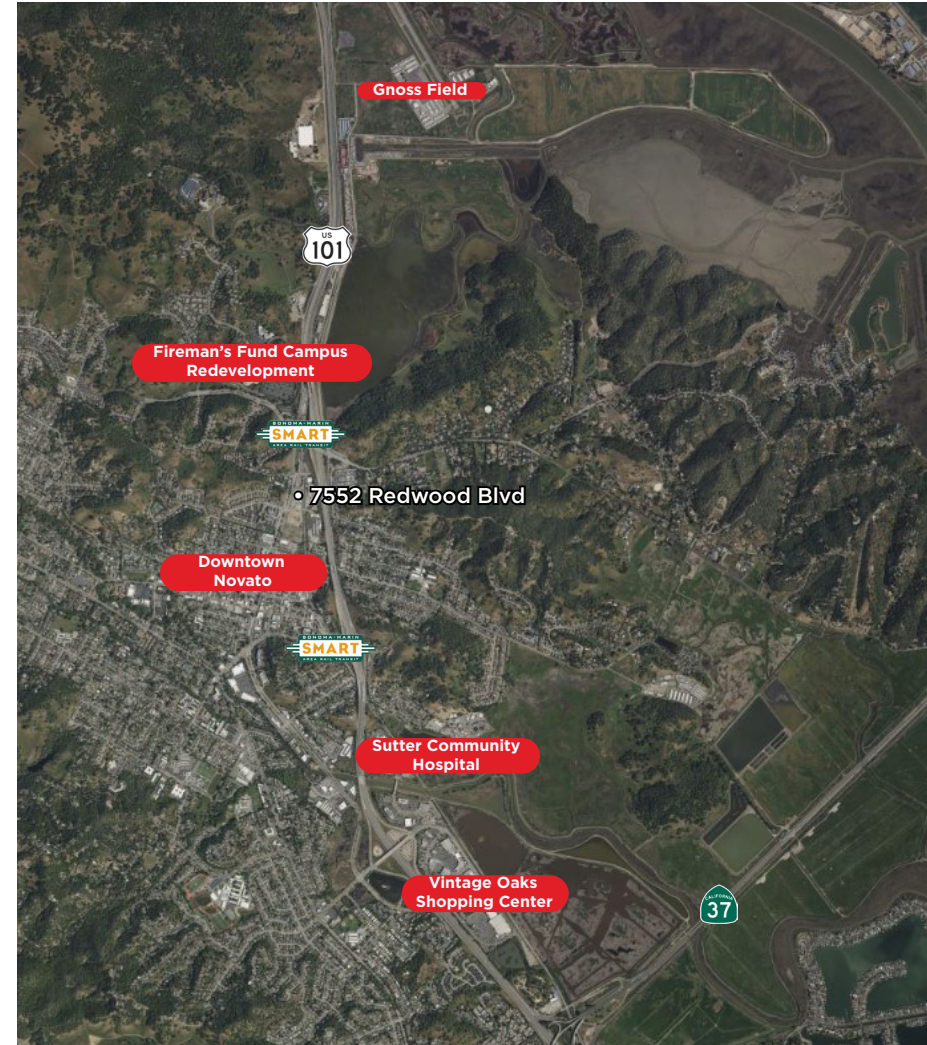


MAPS



7552 REDWOOD BLVD.  
NOVATO, CA

COMMERCIAL LAND  
FOR LEASE



REPRESENTED BY:

NATHAN BALLARD, PARTNER  
LIC # 01743417 (415) 461-1010, EXT 116  
NBALLARD@KEEGANCOPPIN.COM

JOHN MOHUN, PARTNER  
LIC # 02232254 (415) 461-1010, EXT 126  
JMOHUN@KEEGANCOPPIN.COM

The above information, while not guaranteed, has been secured from sources we believe to be reliable. Submitted subject to error, change or withdrawal. An interested party should verify the status of the property and the information herein.