



1467 HIGHWAY 20 W.
MCDONOUGH, GA 30253

BUILDING SIZE 111,908 SF

AVAILABLE SF 32,361 SF

PARKING RATIO 1:1.56

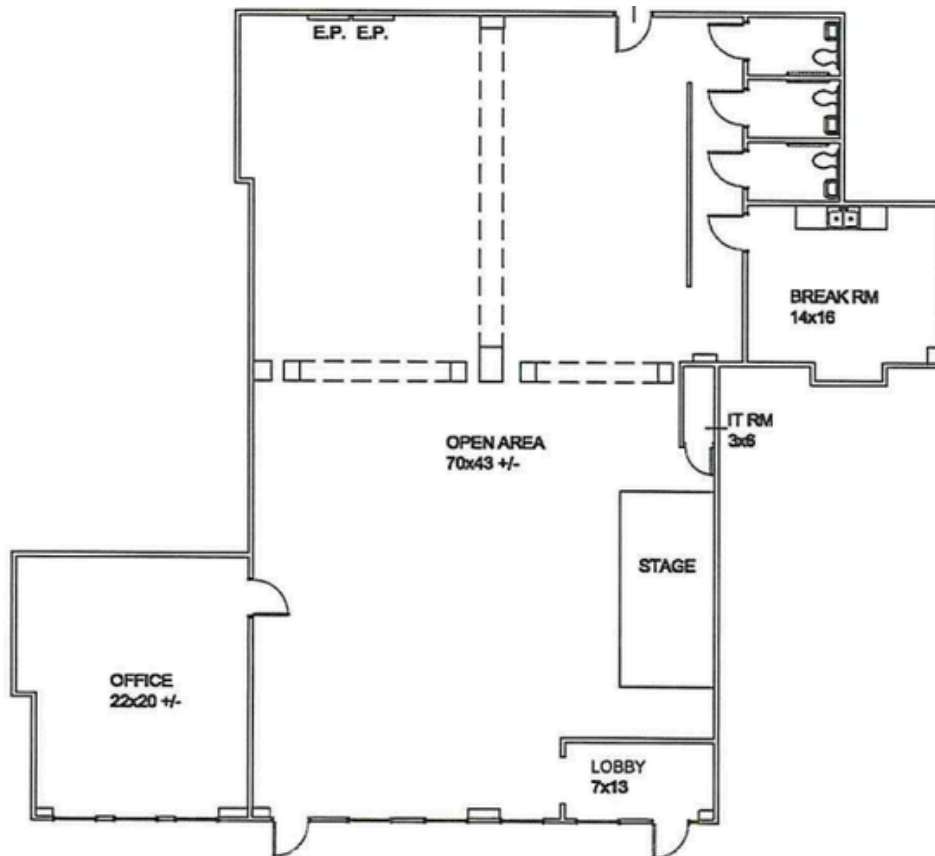
PROPERTY HIGHLIGHTS

- Prime Location – Situated on Hwy 20 W, offering excellent visibility and easy access
- High Traffic Area – Strong daily traffic counts provide great exposure for businesses
- Proximity to I-75 – Just minutes from the interstate, ensuring convenient accessibility
- Growing Market – McDonough is a rapidly expanding area with strong residential and commercial development
- Well-Maintained Property – Professional landscaping and upkeep provide a welcoming environment
- Zoning Flexibility – Suitable for a variety of commercial uses
- Surrounded by Amenities – Close to restaurants, retail, and other businesses that drive foot traffic



1473 HIGHWAY 20 W.

MCDONOUGH, GA 30253



- LARGE OPEN FLOOR PLAN
- SUITABLE FOR OFFICE, CHURCH, FITNESS, EDUCATION, OR FLEX USERS
- LOCATED IN A GROWING MCDONOUGH CORRIDOR NEAR RETAIL AND DINING

SHELLY EVANS

404-438-6029

SHELLY@WEPARTNERGROUP.COM



WEPARTNERGROUP.COM