



# 150 N 2ND ST

MOUNTAIN HOME, ID 83647 | RETAIL/OFFICE SPACES FOR LEASE

**MOSES MUKENGEZI**  
208.947.0836  
moses@tokcommercial.com

**HOLLY CHETWOOD, CCIM**  
208.947.0827  
holly@tokcommercial.com

**CONTACT**



**HIGHLIGHTS**



- Prime Main Street location with strong visibility
- Retail space available for lease in the heart of downtown
- Recently refreshed exterior updates
- Flexible layout suitable for retail, boutique, or service users
- Surrounded by established local businesses and community amenities
- Convenient access and nearby street parking for customers

SPACE	RSF	RATE
150 N. 2nd S	2,186 SF	\$10.00 SF/yr

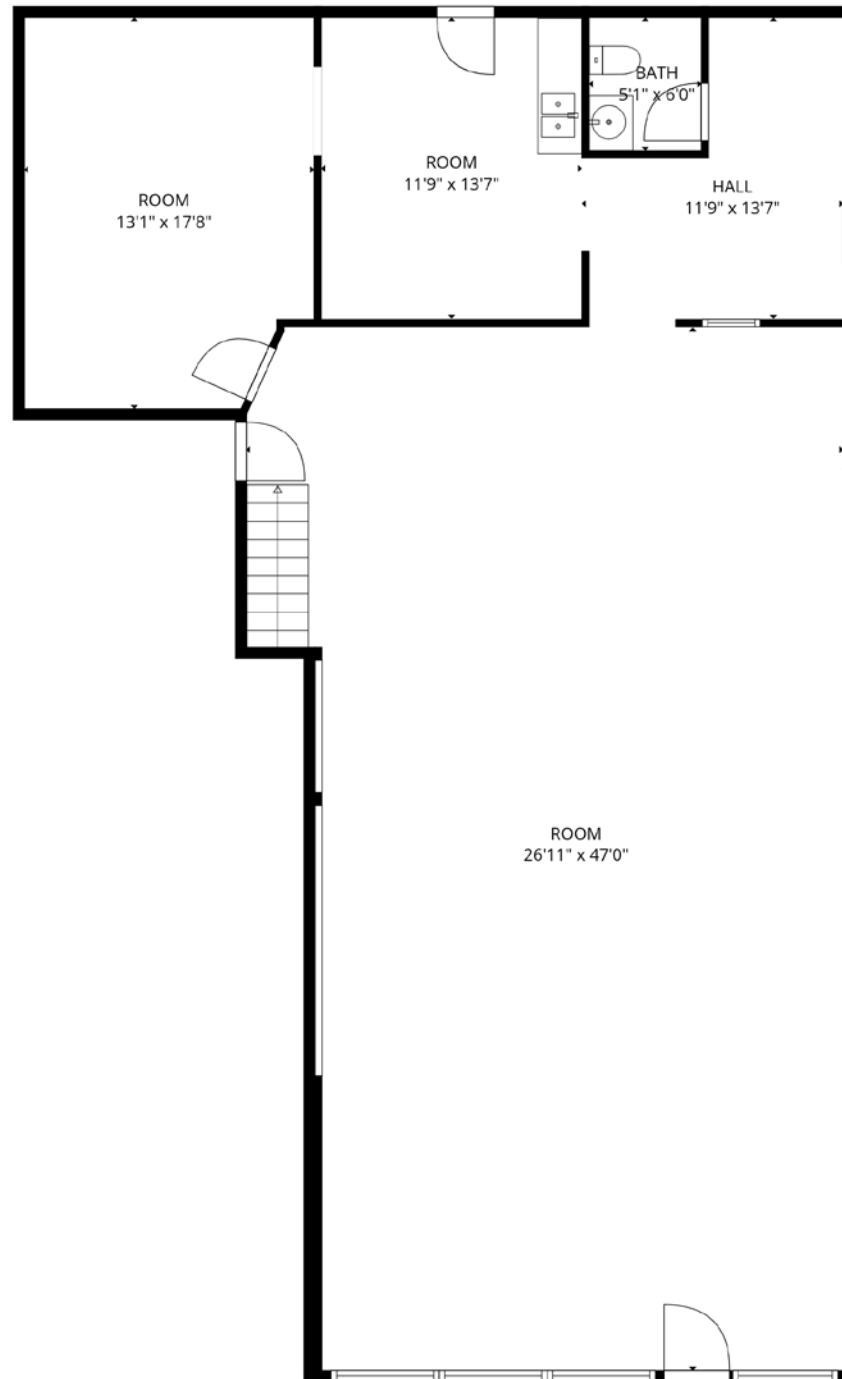
**DETAILS**



<b>LOT SIZE</b>	.138 Acres	<b>ZONING</b>	C2
<b>BLDG SIZE</b>	2,186 SF	<b>LEASE TERM</b>	3-5 Yrs.
<b>BLDG TYPE</b>	Retail/Office	<b>EST. NNN'S</b>	Contact Agent

# FLOOR PLAN

SPACE	RSF	RATE
150 N. 2nd S	2,186 SF	Contact Agent





150 N 2ND ST

**TOX**COMMERCIAL.COM

**DEMOGRAPHICS**

	1 Mi.	3 Mi.	5 Mi.
<b>POPULATION:</b>	9,182	19,909	21,372
<b>AVG HH INCOME:</b>	\$77,229	\$82,112	\$83,341
<b>EST. EMPLOYEES:</b>	7,272	15,579	16,707

44 Miles  
to Boise

**SITE**

Downtown Mountain Home

11,229 VPD

AMERICAN LEGION BLVD

Mountain Home High School

AIRBASE RD

51

12,228 VPD

87 Miles  
to Twin Falls

**IDEAL LOCATION IN THE HEART OF MOUNTAIN HOME**

150 N 2ND ST