

4660 BEECHNUT

OFFICE SPACE



4660 BEECHNUT ST.
HOUSTON, TX 77096



DAN MEYER
713.668.2369
danmeyer@mcmmanagement.com

ANNIE TARWATER
713.668.2369
atarwater@mcmmanagement.com



LOCATION HIGHLIGHTS

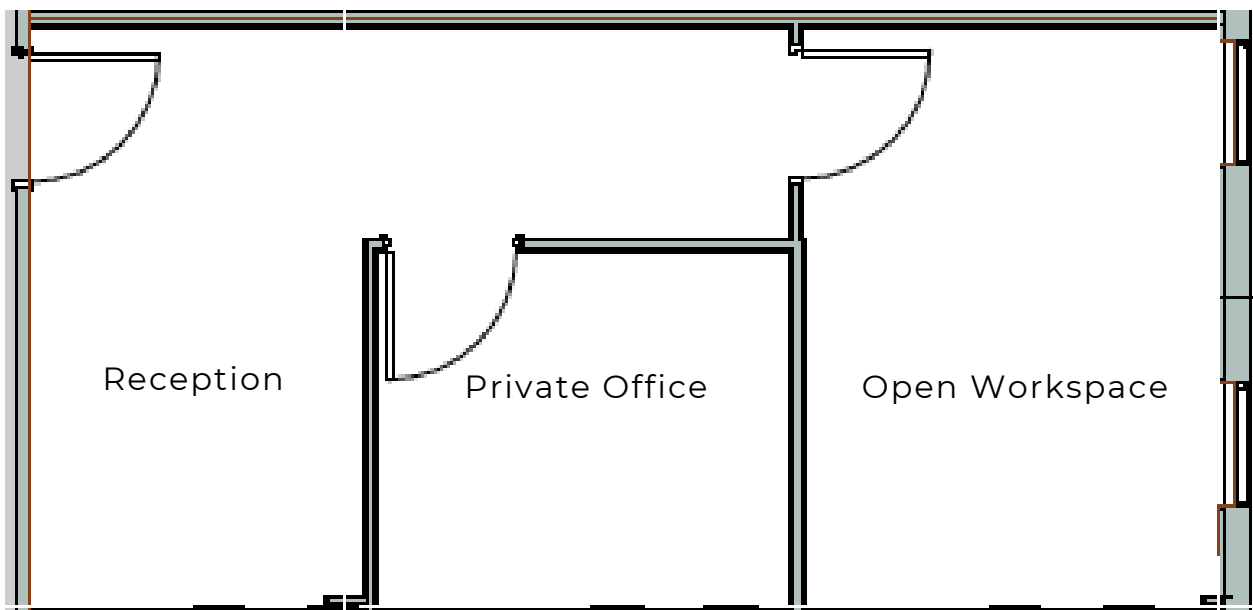
- LOCATED JUST INSIDE THE 610 LOOP IN CLOSE PROXIMITY TO MEYERLAND & BELLAIRE.
- THIS MIXED-USE PROPERTY OFFERS 20,000 SF OF PRIME RETAIL SPACE ON THE GROUND FLOOR AND 20,000 SF OF NEWLY REMODELED OFFICE SPACE ON THE SECOND FLOOR.
- POSITIONED ACROSS FROM SOUTH CROSS SHOPPING CENTER AND NEAR MEYERLAND PLAZA, THE BUILDING PROVIDES A CONVENIENT AND HIGHLY ACCESSIBLE LOCATION WITH AMPLE NEARBY DINING OPTIONS AND AMENITIES.

4660 BEECHNUT



SUITE 214
450 SF

Suite Layout



ANNIE TARWATER

713.668.2369

atarwater@mcmmanagement.com

DAN MEYER

713.668.2369

danmeyer@mcmmanagement.com

4660 BEECHNUT ST.,
HOUSTON, TX 77096