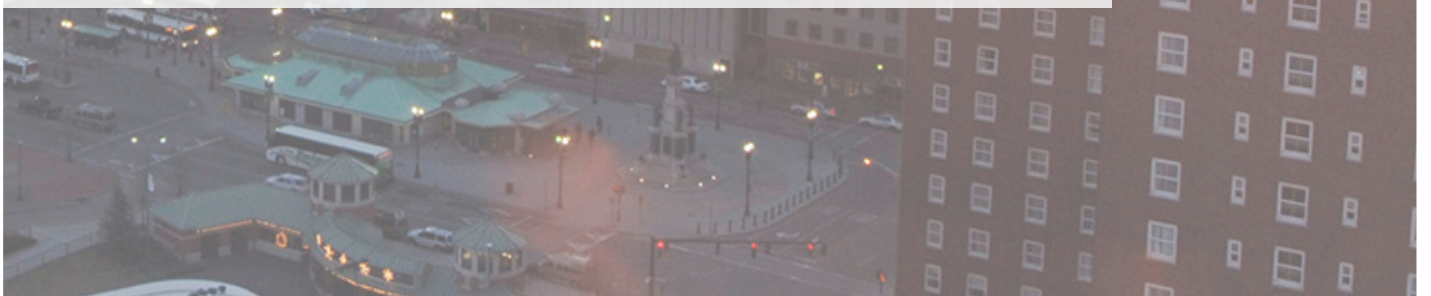


sweeney

REAL ESTATE & APPRAISAL

OFFICE CONDO FOR SALE

1150 RESERVOIR AVENUE, UNIT 201 CRANSTON - RHODE ISLAND



One Turks Head Place, Suite 850 • Providence, Rhode Island 02903
T: 401.331.9300 • F: 401.331.9306 • www.sreari.com



THOMAS O. SWEENEY, SIOR | TSWEENEY@SREARI.COM | 401-331-9300 | 401-523-5101

1150 RESERVOIR AVENUE, UNIT 201 CRANSTON - RHODE ISLAND

Asking Price: \$295,000
(Plat 9/2, Lot 156, Unit 7)

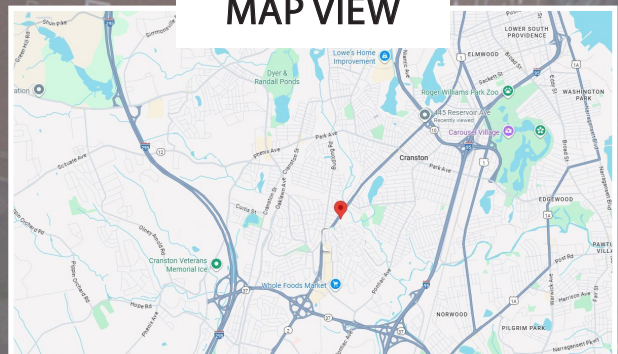
PROPERTY DETAILS

- Office Medical Condo
- 2,607± Square Feet
- Reception/Waiting Area
- Six (6) Exam Rooms
- Four (4) Private Offices
- Open Bullpen Area
- Kitchenette
- Ample Natural Light
- ADA Compliant
- Second Floor Location
- Significant On-Site Parking
- Next to Garden City Center Amenities
- Minutes to I-95, I-295, RT 1 & RT-10
- Estimated Taxes: \$10,012

LOBBY



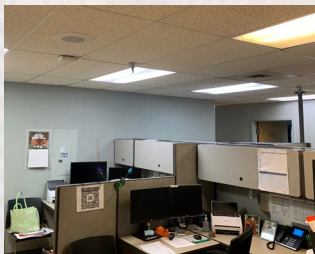
MAP VIEW



sweeney
REAL ESTATE & APPRAISAL

1150 RESERVOIR AVENUE, UNIT 201 CRANSTON - RHODE ISLAND

ADDITIONAL PHOTOS



THOMAS O. SWEENEY, SIOR | TSWEENEY@SREARI.COM | 401-331-9300