



# Highly Visible Retail Space Available for Sublease

350 Sunset Blvd, Renton, WA 98057

- 5,980 Square Feet
- High visibility location along Sunset Blvd N. (Est. 42,000 Cars Per Day)
- Easily accessible
- Convenient surface parking in front
- Pylon signage available
- 12' 6" ceilings
- Partially air conditioned

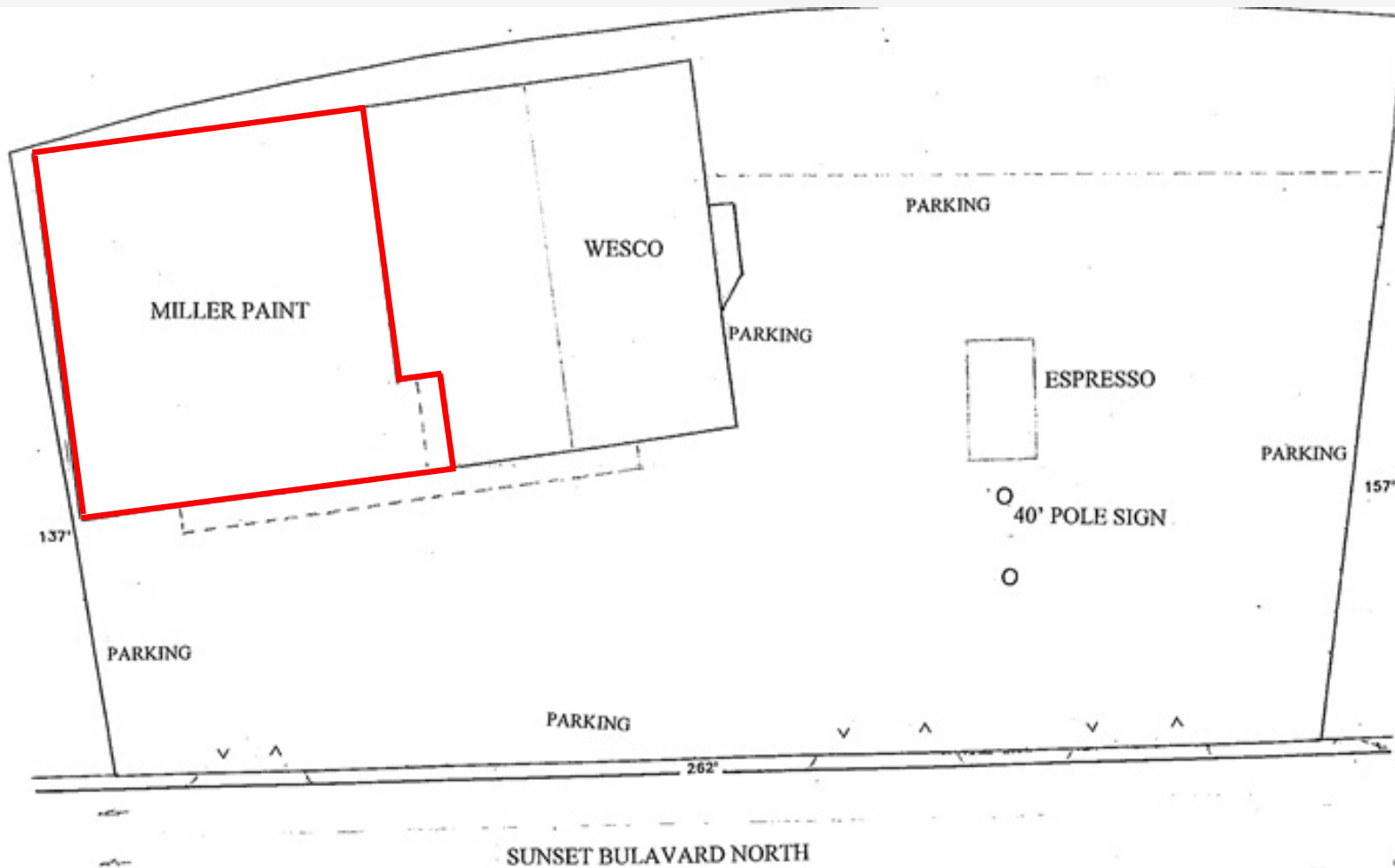
Sublease Term:  
Through Sept. 2028  
(Longer Term  
Potentially Available)

Asking Rate:  
Inquire with Broker



KYLE WALDERHAUG  
(425) 478-5683  
KYLE@NWRETAIL.COM

# Siteplan

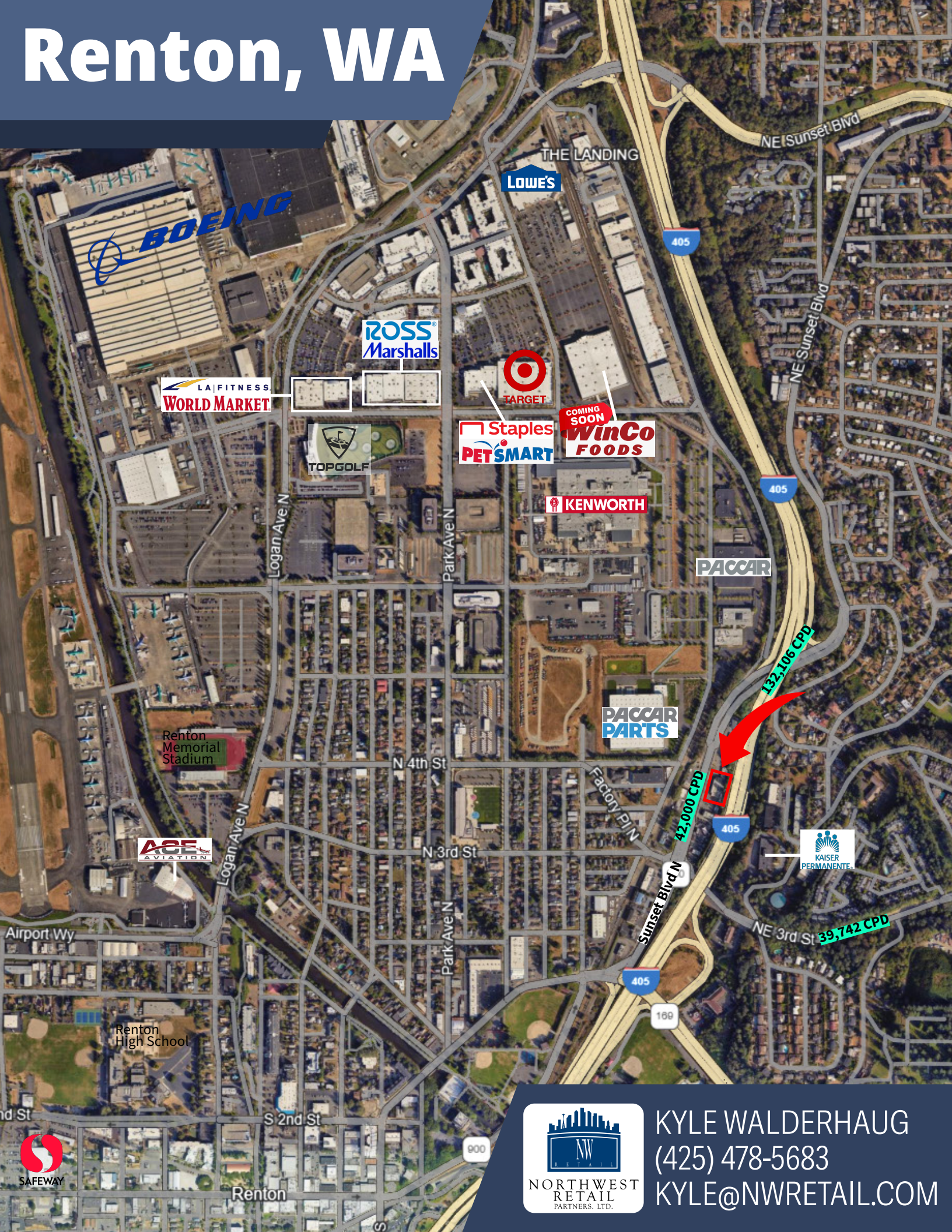


Interior Layout: Open showroom with two (2) private offices, one (1) restroom, large additional showroom, or product staging area.



KYLE WALDERHAUG  
(425) 478-5683  
KYLE@NWRETAIL.COM

# Renton, WA



LA FITNESS  
**WORLD MARKET**

**ROSS**  
Marshalls

**Lowe's**

**TARGET**

Staples  
**PET SMART**

COMING SOON  
**WinCo**  
FOODS

**KENWORTH**

**PACCAR**

**PACCAR**  
PARTS

Renton Memorial Stadium

**ACE**  
AVIATION

**KAISER**  
PERMANENTE

Renton High School

**SAFeway**



**KYLE WALDERHAUG**  
(425) 478-5683  
KYLE@NWRETAIL.COM



*\*This information supplied herein is from sources we deem reliable. It is provided without any representation, warranty, or guarantee, expressed or implied as to its accuracy. Prospective Buyer or Tenant should conduct an independent investigation and verification of all matters deemed to be material, including, but not limited to, statements of income and expenses. Consult your attorney, accountant, or other professional advisor. All Northwest Retail Partners designs are the sole property of Northwest Retail Partners. Branded materials and layouts are not authorized for use by any other firm or person.*



**KYLE WALDERHAUG**  
(425) 478-5683  
KYLE@NWRETAIL.COM