

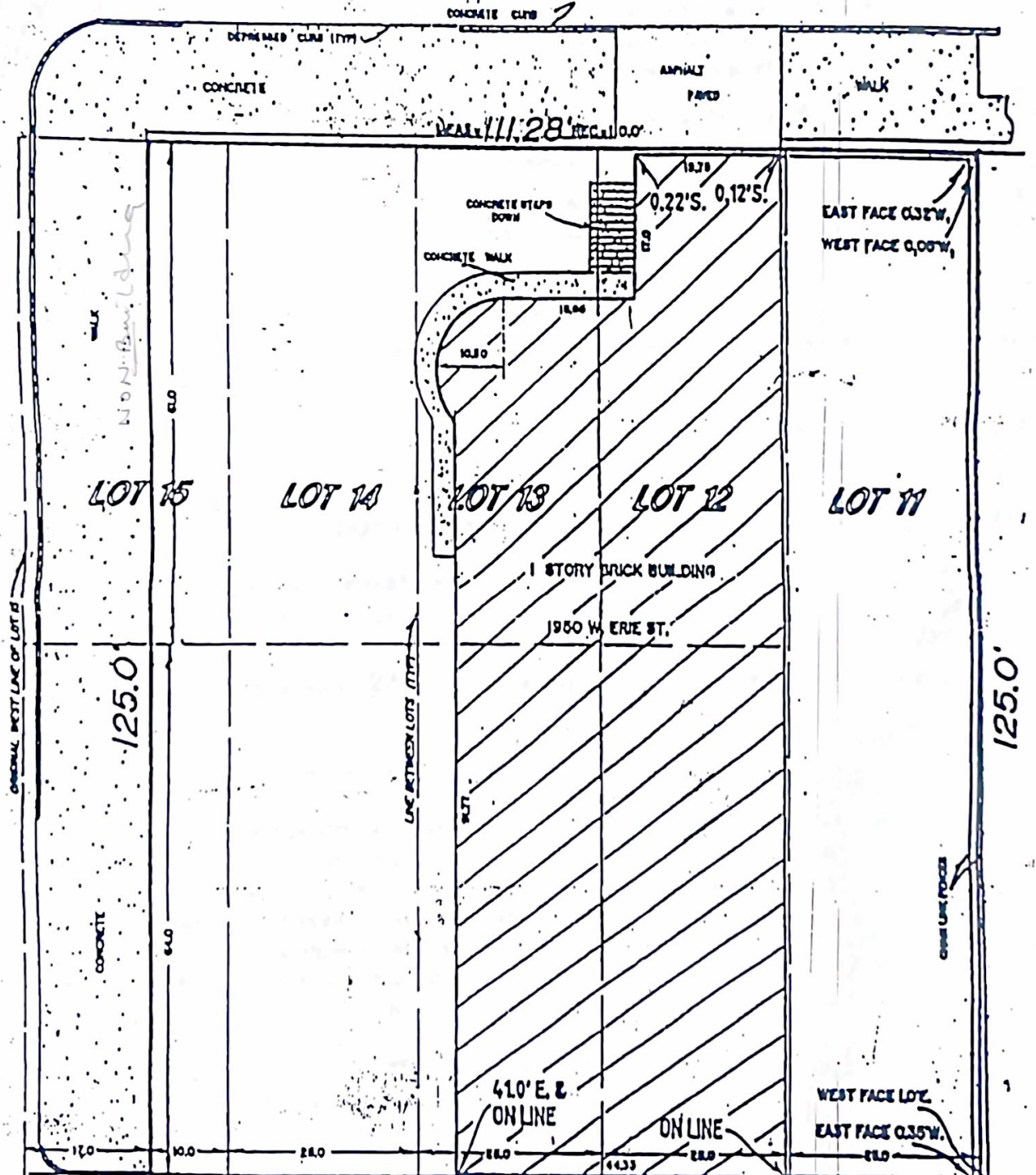
Lot 11, the South 64.0 feet of Lots 12 to 15, both inclusive, (except street), North 61.0 feet of Lots 12 to 15, both inclusive, (except street) in Block 10 in George Bleckerdike's Addition to Chicago, being the West 1/2 of the Northwest 1/4 of Section 8, Township 39 North, Range 14 East of the Third Principal Meridian, in Cook County, Illinois
 Commonly Known as: 1950 W. Erie St.
 Chicago, Illinois

629 N. Ashland

W. ERIE St.

AVE.

N. ASHLAND



MEAS. 111.28' REC. 110.0'

14 FT. (CONCRETE) ALLEY