



1480 Howard Avenue

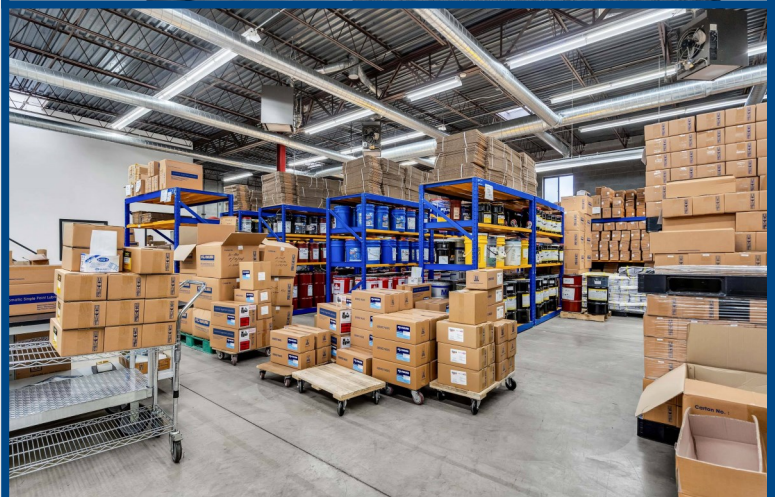
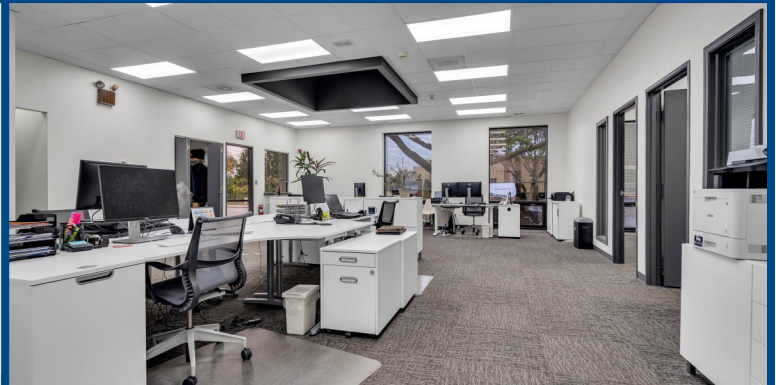
Elk Grove Village, IL 60007



Building Highlights

- 20,099 S.F. gross +/- Land
- 9,309 S.F. gross +/- Building
- 3,085 S.F. gross +/- Office/Showroom
- 6,224 S.F. gross +/- Warehouse
- 16' Clear +/-
- 15 Car Stalls +/-
- 1 Dock
- 1 Drive-In Door
- Gas Unit Heaters
- Air Conditioned Office
- Air Conditioned Warehouse
- I-1 Industrial
- Rental Rate: Subject to Offer
- CAM: Lessee Responsibility

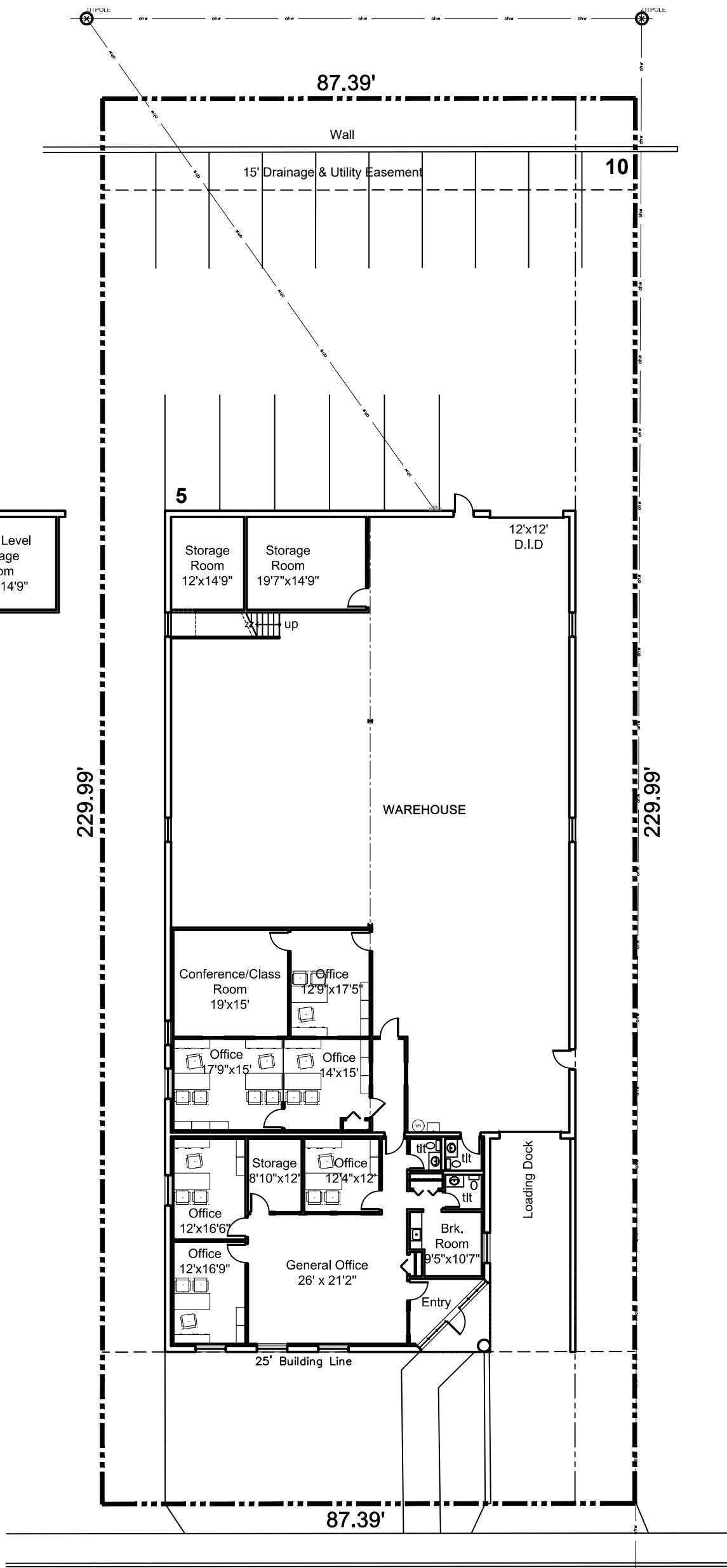
Ideal for Sales Office, Showroom, and Warehouse



Building a better image

For more information contact: Giovanni Gullo or Mariann Gullo • Email: info@gullo.com • Phone: 847.364.7000
Gullo International | Development Corporation | Realty Group • 1100 Landmeier Road • Elk Grove Village, IL 60007

All information herein is from sources deemed reliable but not guaranteed accurate. Subject to errors, omissions, and to change of price and terms, prior sale or lease, all without notice. In compliance with Illinois law, Gullo International Realty Group (broker) hereby gives written notice of the existence of an agency relationship between broker and the owner of the above referenced property. All Gullo International Realty Group real estate agents represent the owner of the above property in negotiation of price terms, conditions, and the consummation of any lease or sale contract.



1480 HOWARD STREET, ELK GROVE VILLAGE, ILLINOIS

ZONING:	I1
PROPOSED USE:	OFFICE / WAREHOUSE
BUILDING:	9,309 S.F. +/-
OFFICE:	3,085 S.F. +/-
WAREHOUSE:	6,224 S.F. +/-
DRIVE IN DOORS:	1
EXTERIOR LOADING DOCKS:	1
CAR PARKING PROVIDED:	15

HOWARD STREET

Site & Building Plan

1480 Howard Street

April 8, 2026



GILLO INTERNATIONAL DEVELOPMENT CORPORATION