

Medical Office | For Lease

**CBRE**

# 5747 Perimeter Dr.

Dublin, OH 43017

**Molly Leach**  
Senior Vice President  
molly.leach@cbre.com  
+1 614 332 4795

**Sarah LaHue**  
Associate  
sarah.lahue@cbre.com  
+1 614 430 5060

3,633 - 26,437 SF Available for Lease in Dublin, OH.

**\$50 - \$80 PSF Tenant Improvement Allowance for a 10-year term**



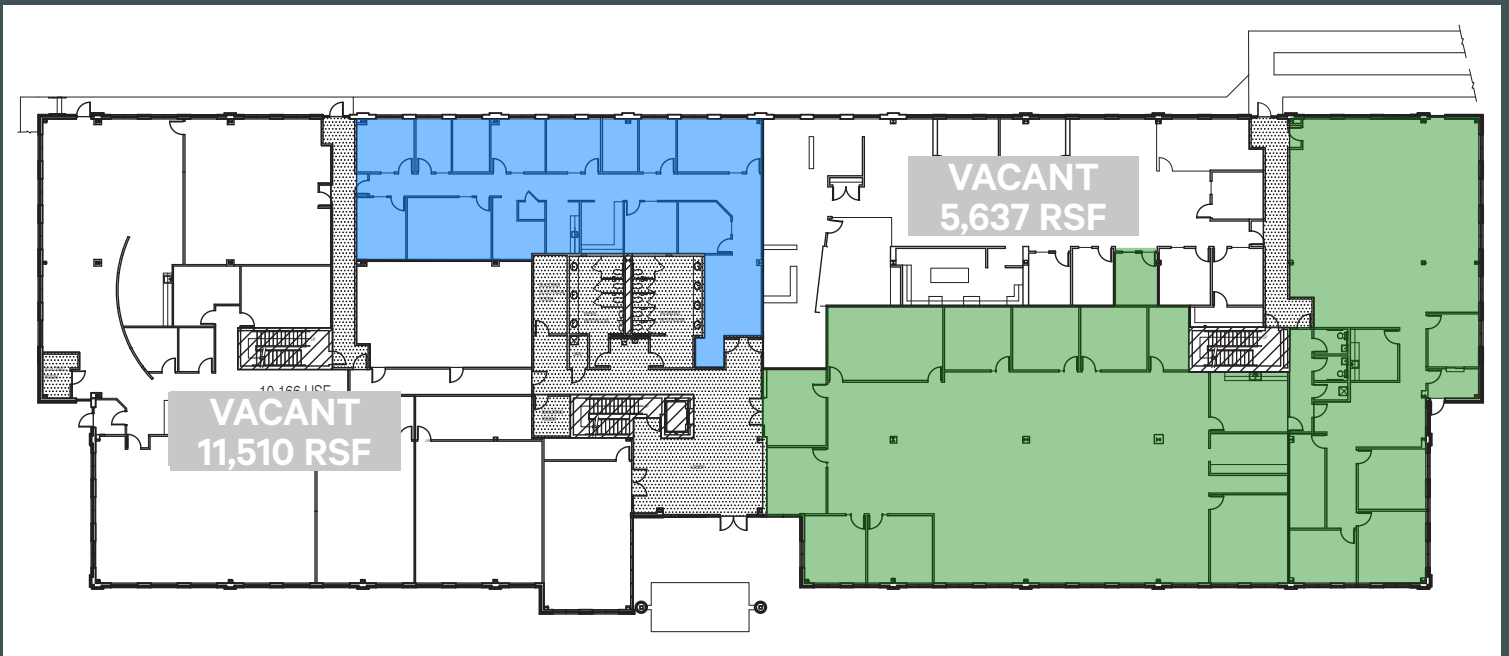
# Property Details

- + 5,637 - 11,510 SF available on the 1<sup>st</sup> Floor
- + 9,289 SF available on the 2<sup>nd</sup> Floor
- + Total available: 26,437 SF
- + \$19.50 - \$23.50/PSF NNN
- + Estimated Operating Expenses: \$9.95 PSF (includes in-suite janitorial and utilities)
- + \$50-\$80 PSF Tenant Improvement Allowance for a 10 - year term
- + Minutes from Dublin Methodist Hospital and Mt. Carmel Hospital
- + Minutes from Bridge Park
- + Great access to I-270 and SR-161
- + Ample amenities and parking
- + Monument signage available



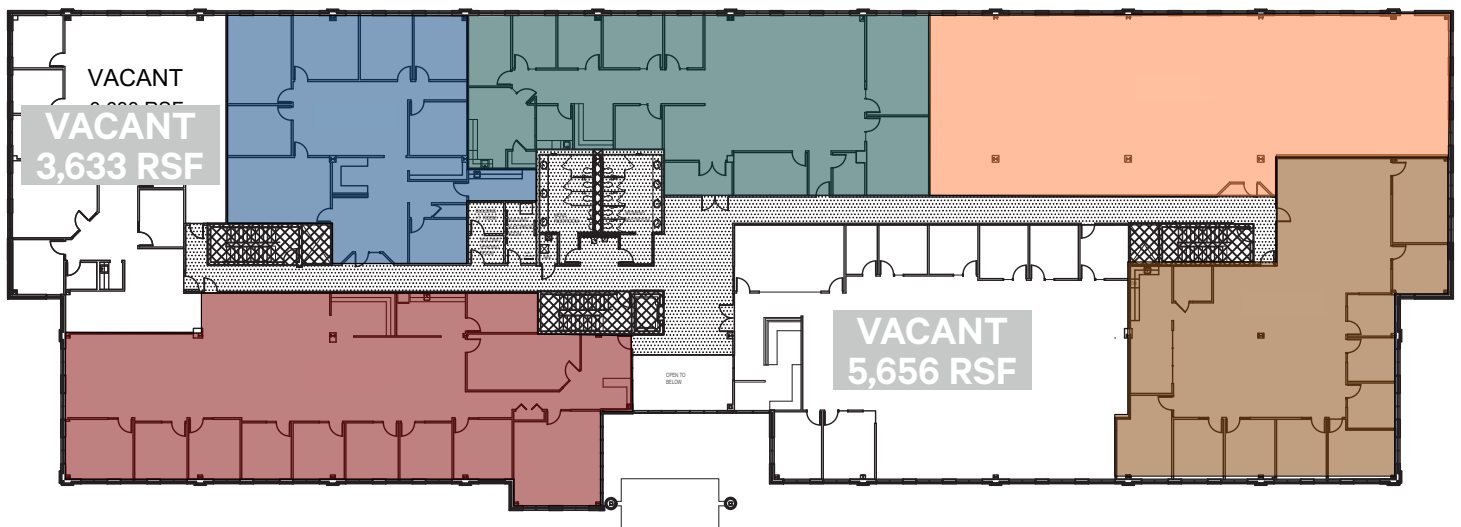
# First Floor

Available SF on the First Floor: 5,637 - 11,510 RSF



# Second Floor

Available SF on the Second Floor: 3,633 - 5,656 RSF



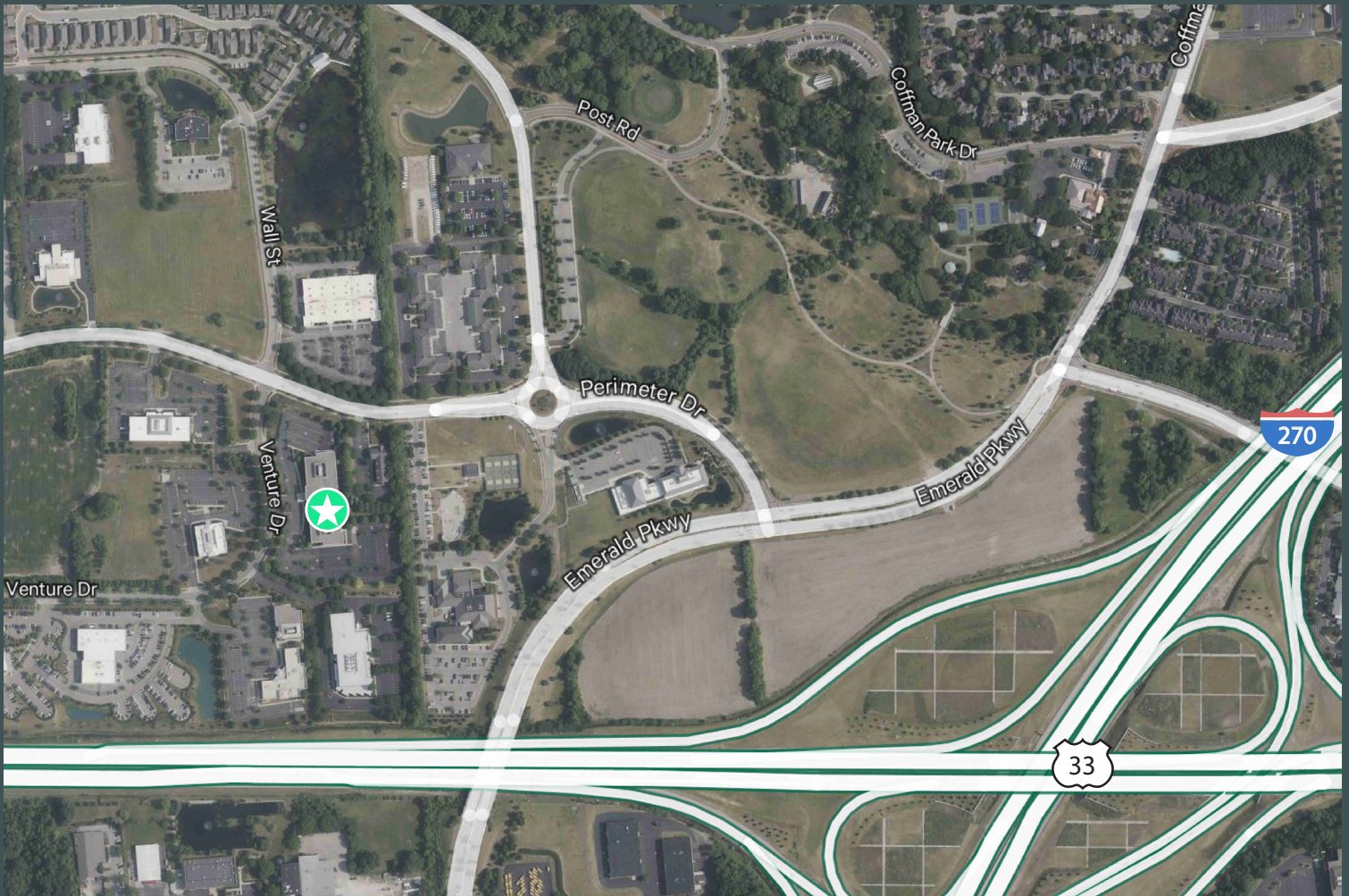
5747 Perimeter Drive  
Dublin, OH 43016

For Lease



5747 Perimeter Drive  
Dublin, OH 43016

For Lease



## Contact Us:

### Molly Leach

Senior Vice President  
molly.leach@cbre.com  
+1 614 332 4795

### Sarah LaHue

Associate  
sarah.lahue@cbre.com  
+1 614 273 5714

© 2026 CBRE, Inc. All rights reserved. This information has been obtained from sources believed reliable, but has not been verified for accuracy or completeness. You should conduct a careful, independent investigation of the property and verify all information. Any reliance on this information is solely at your own risk. CBRE and the CBRE logo are service marks of CBRE, Inc. All other marks displayed on this document are the property of their respective owners, and the use of such logos does not imply any affiliation with or endorsement of CBRE. Photos herein are the property of their respective owners. Use of these images without the express written consent of the owner is prohibited.

**CBRE**