



**OFFICE SPACE**  
**2,256 - 2,748 SF FOR LEASE**



**20650 STONE OAK PKWY, SAN ANTONIO, TX 78258**

**TRANSWESTERN** REAL ESTATE SERVICES



## BUILDING HIGHLIGHTS

Situated in Stone Oak, a thriving master-planned area north of Loop 1604 populated with affluent residential neighborhoods and growing professional/retail sectors, 20650 Stone Oak offers highly visible, second-generation space ideal for a variety of uses.



20650 Stone Oak Pkwy is located in the premier Far North Central submarket with top demographic access



Second generation office space prepared for immediate occupancy



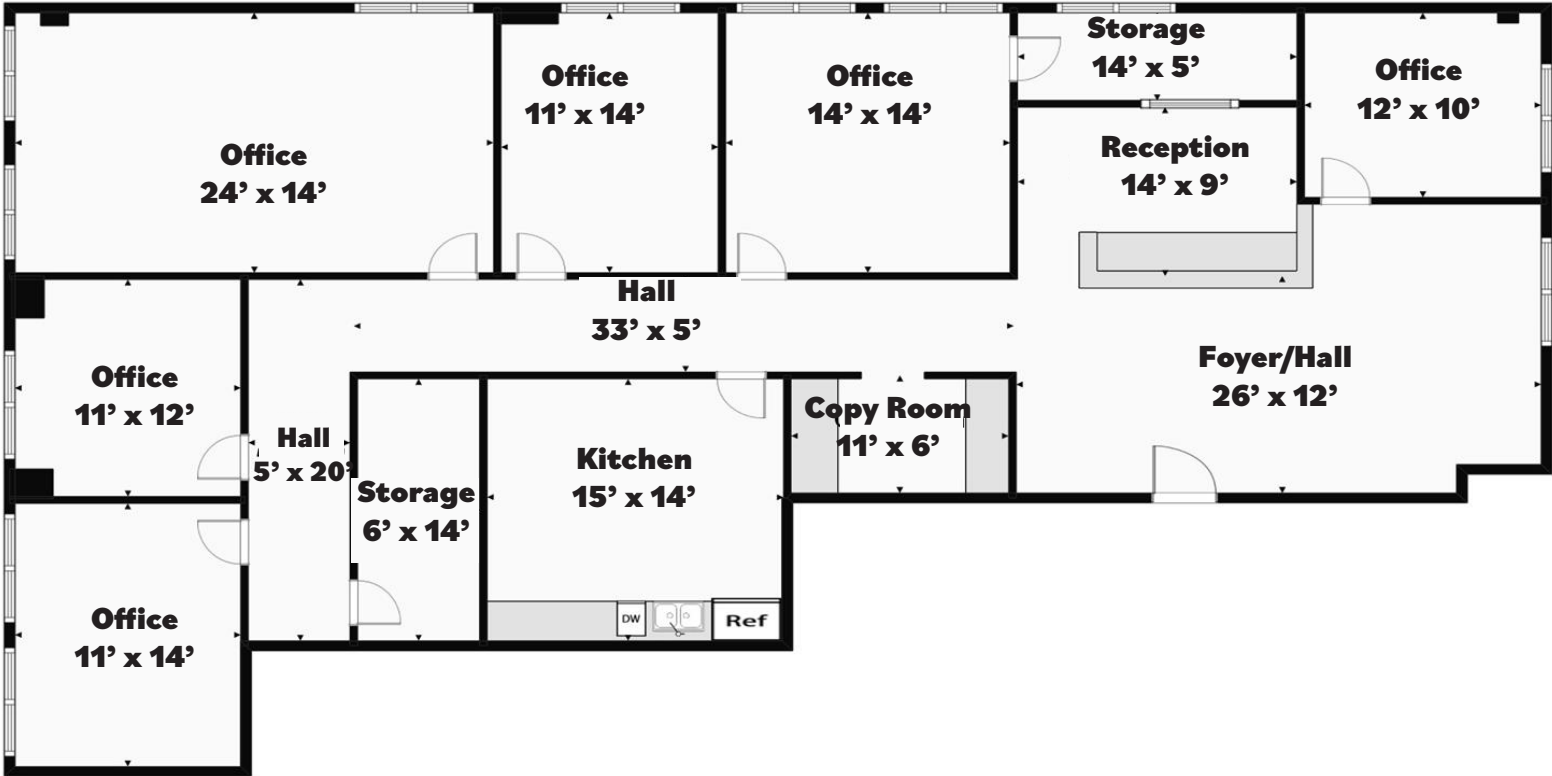
Conveniently located in Stone Oak with quick access to Loop 1604 & Hwy 281



Abundant nearby restaurants, retail and entertainment

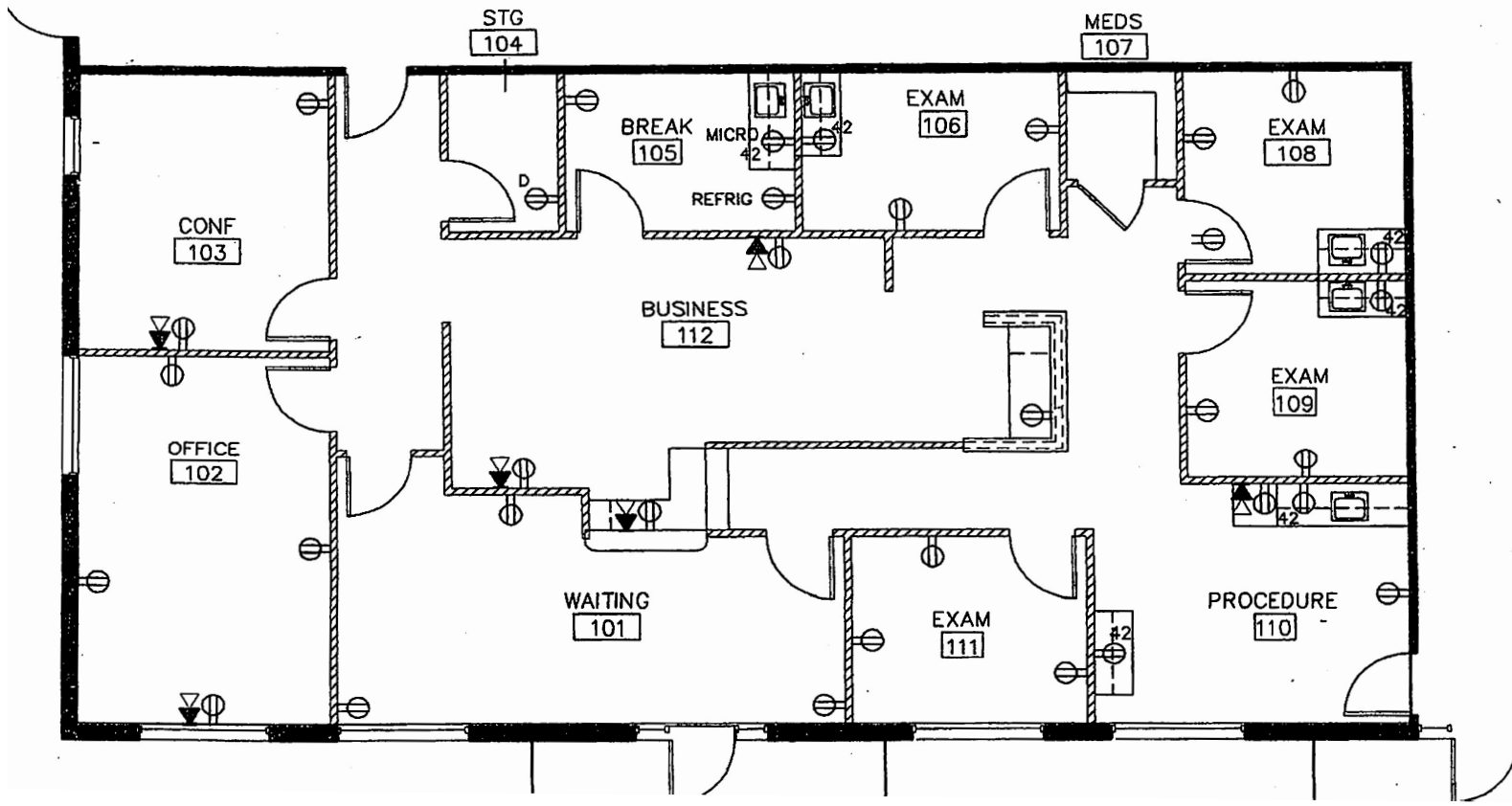
# SUITE 100

±2,748 SF



# SUITE 106

±2,256 SF



# AREA AMENITIES



**SITE**

**THE VINEYARD**

TARGET | WHOLE FOODS MARKET | PNC | J-PRIME

ALDI | LA FITNESS | hopdoddy | BURGER KING | CHIROPOLE

Starbucks | TORCHYS | mellow MUSHROOM | Kirby's | CHAMA GAUCHA | corner bakery CAFE | TORO | TRADER JOE'S

MAIN EVENT | SUBWAY | BEST BUY | SPEC'S | LIFETIME FITNESS | HOME2

H-E-B | WHATABURGER | WELLS FARGO | goodwill | BreVity | WINGSTORY

WHATABURGER | Dutch Bros | Jason's deli | Best Western | COSTCO WHOLESALE | Walmart

Sonterra Golf Course

Hollywood Park

Hill Country Village

Shavano Park

Bulverde R



20726 STONE OAK PKWY, SAN ANTONIO, TX 78258



 **TRANSWESTERN** REAL ESTATE SERVICES

**CHRIS THOMPSON**

P: 210.200.8644  
E: [Chris.Thompson@transwestern.com](mailto:Chris.Thompson@transwestern.com)

**GUY LILJENWALL**

P: 210.202.2677  
E: [Guy.Liljenwall@transwestern.com](mailto:Guy.Liljenwall@transwestern.com)