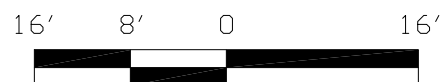
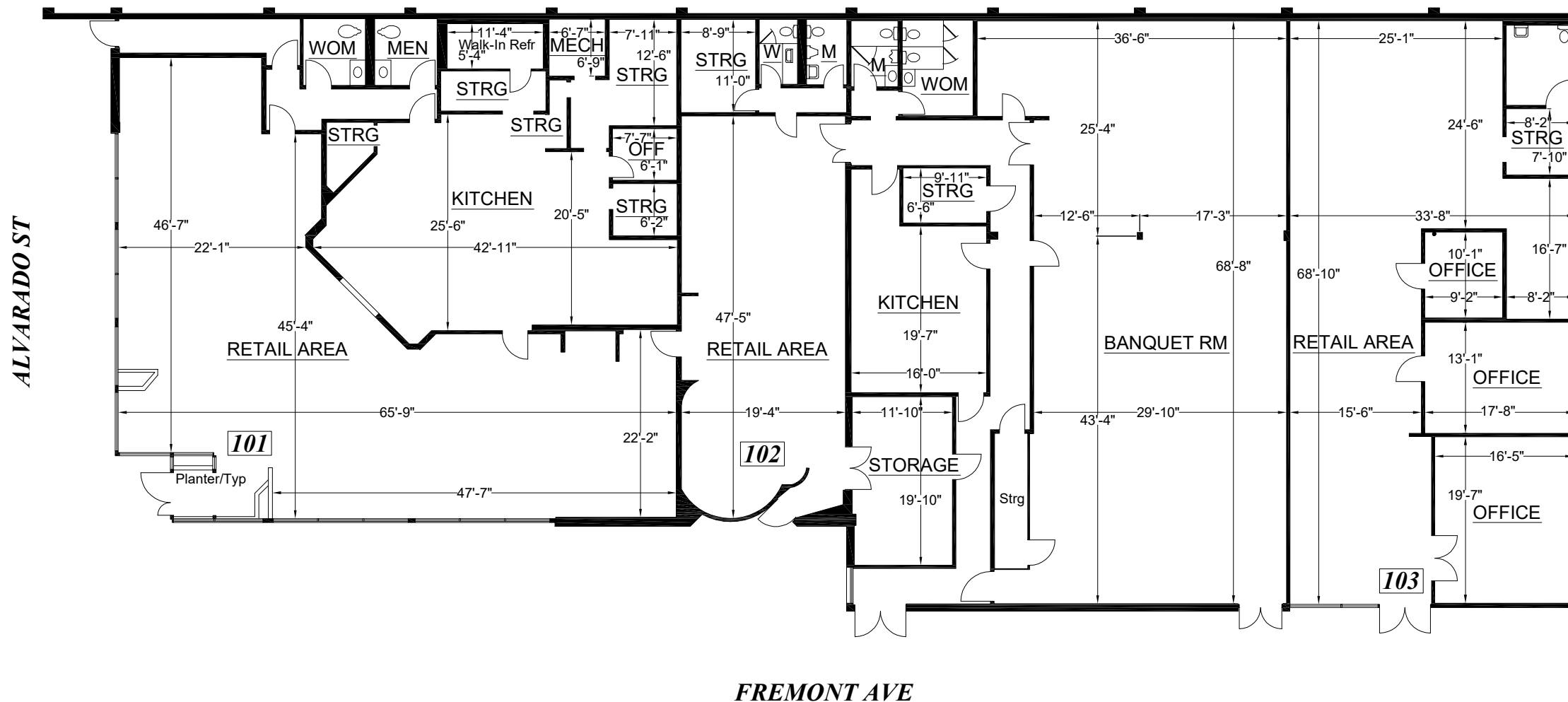


Measured Area: 11,234 s.f.

FLOOR PLAN



SCALE: 1/16" = 1' - 0"

Note: All dimensions shown are rounded to the nearest inch, for informational purposes only. All measurements are recorded to 1/8" accuracy as documented in the final CAD drawing supplied.

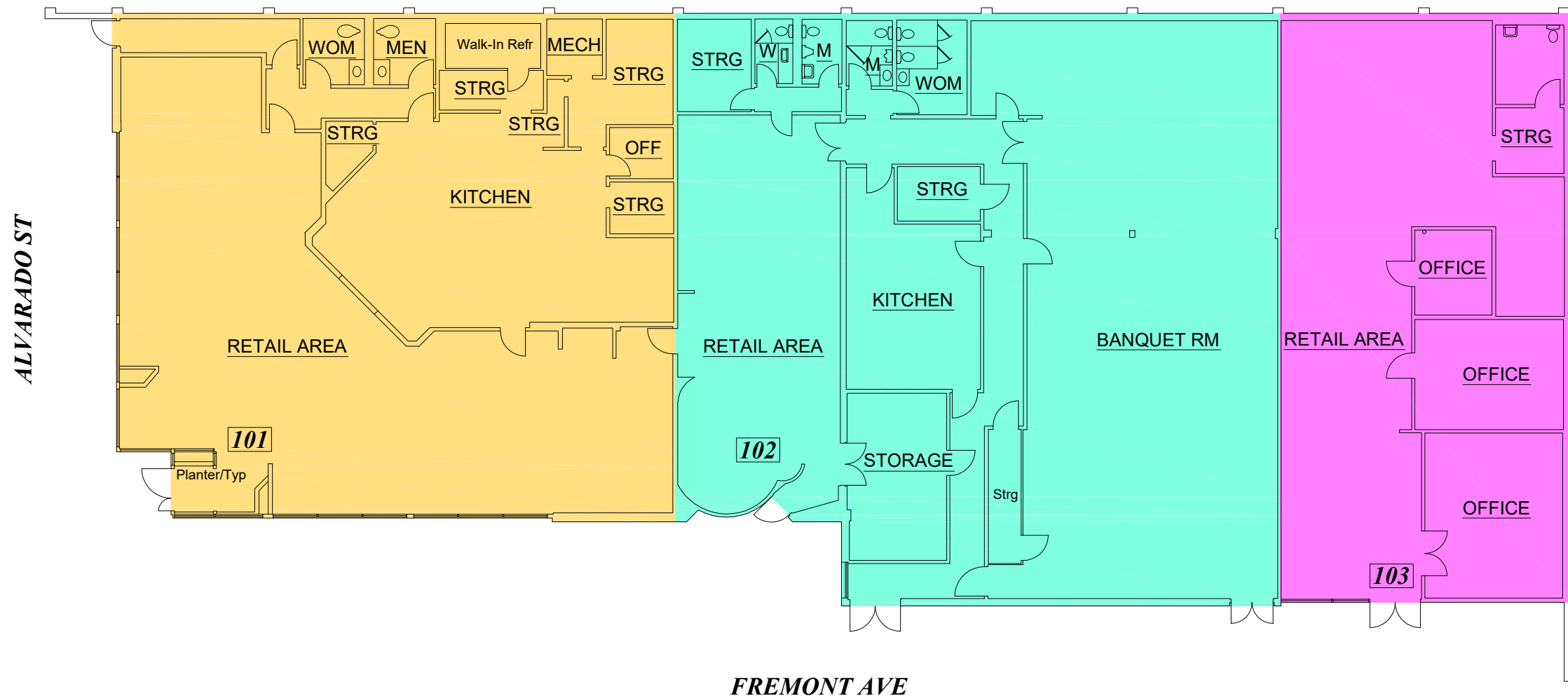
| Billing Summary | SQ.FT. |
|-----------------|--------|
| Measured Area: | 11,234 |

Survey Accuracy: +/- 0.11 %



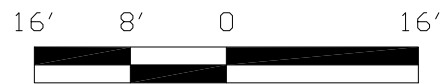


LEASE PLAN



| BUILDING SUMMARY | SQ.FT. |
|---------------------------|--------|
| Exterior Gross Area | 11,212 |
| Total GLA | 11,212 |
| Total Common Area | 0 |
| Total Mezzanines | 0 |
| Total Restricted Headroom | 0 |
| Total Ancillary Areas | 0 |
| Total Parking Area | 0 |

| Occup ID | GLA | Mezzanines | RHA | Ancillary |
|----------|---------|------------|-----|-----------|
| 101 | 3,949.1 | | | |
| 102 | 4,846.2 | | | |
| 103 | 2,416.7 | | | |



SCALE: 1/16" = 1' - 0"

AREAS COMPUTED IN ACCORDANCE WITH
 ANSI/BOMA (Z65.5) RETAIL BUILDINGS:
 METHODS OF MEASUREMENT 2010

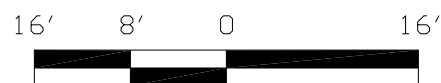
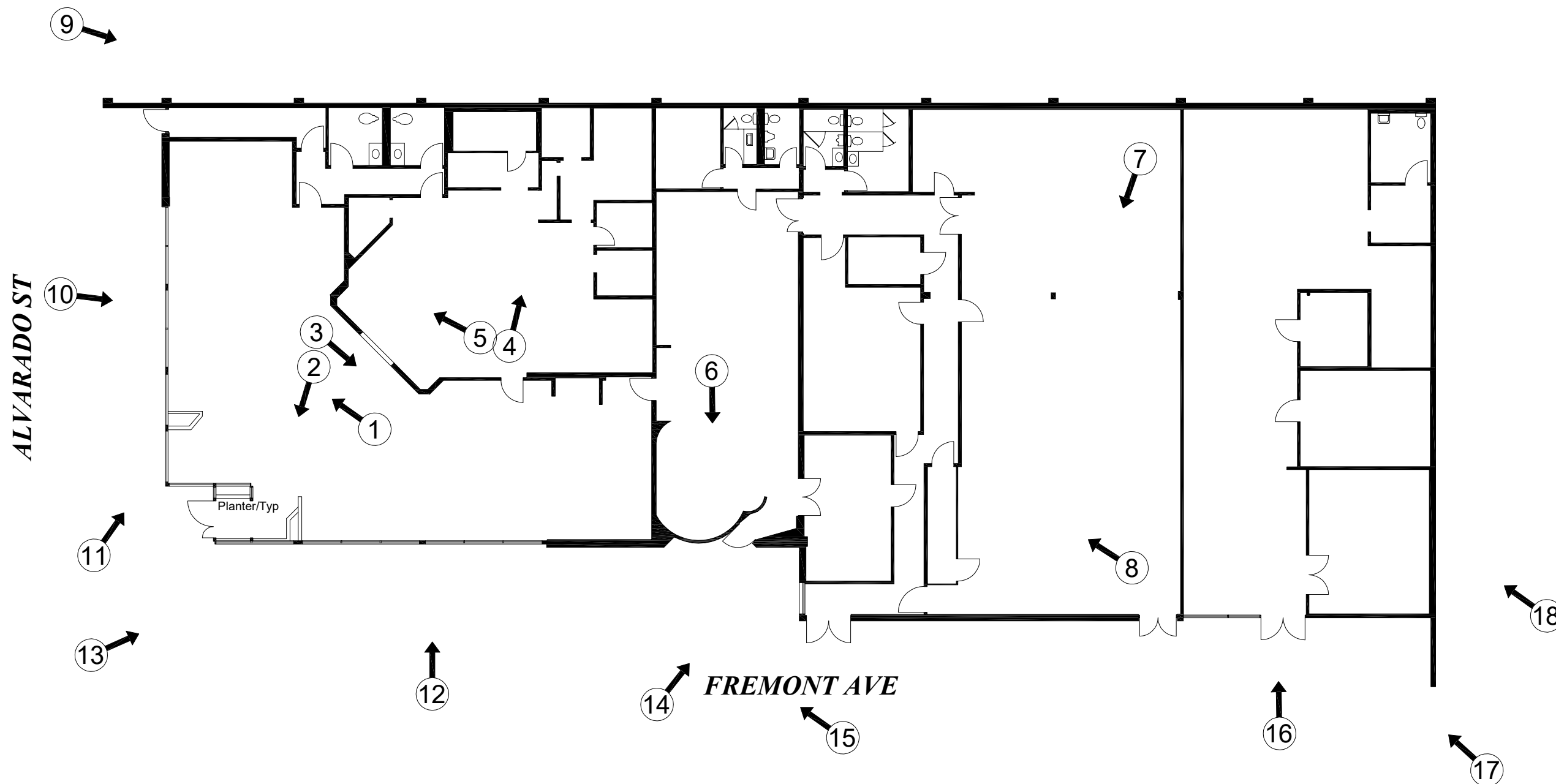
LASERTECH® is a registered US trademark of Lasertech® Floorplans Ltd.
 Copyright 1998 Lasertech® Floorplans Ltd., All Rights Reserved

Survey Accuracy: +/- 0.11 %





PHOTO KEYMAP



SCALE: 1/16" = 1' - 0"