

75 BINNEY STREET

CAMBRIDGE, MA



HIGH-END OFFICE OPPORTUNITY IN KENDALL SQUARE





MODERN & CREATIVE WORKSPACE

AVAILABILITY

1ST FLOOR
15,368 SF

2ND FLOOR
38,984 SF

MEZZ
3,500 SF

4TH FLOOR
39,006 SF

5TH FLOOR
27,197 SF



Building constructed in 2015,
165,000 square foot office building



Sophisticated finishes and
cutting-edge design



Lab Capable

THE NEW TENANT EXPERIENCE

- Little Luna Restaurant on 1st Floor
- Below grade parking (.9/1000 SF ratio)
- Amenity-rich location in Kendall Square
- Walking distance to MBTA Red & Green Lines (Kendall/MIT & Lechmere Stations)
- Blue Bikes directly in front on Binney Street
- Fitness Center



IN THE HEART OF KENDALL SQUARE

- Centrally located within a growing ecosystem of cutting-edge companies
- Access to talent pool with Harvard and MIT nearby
- Walkable to restaurants and entertainment venues

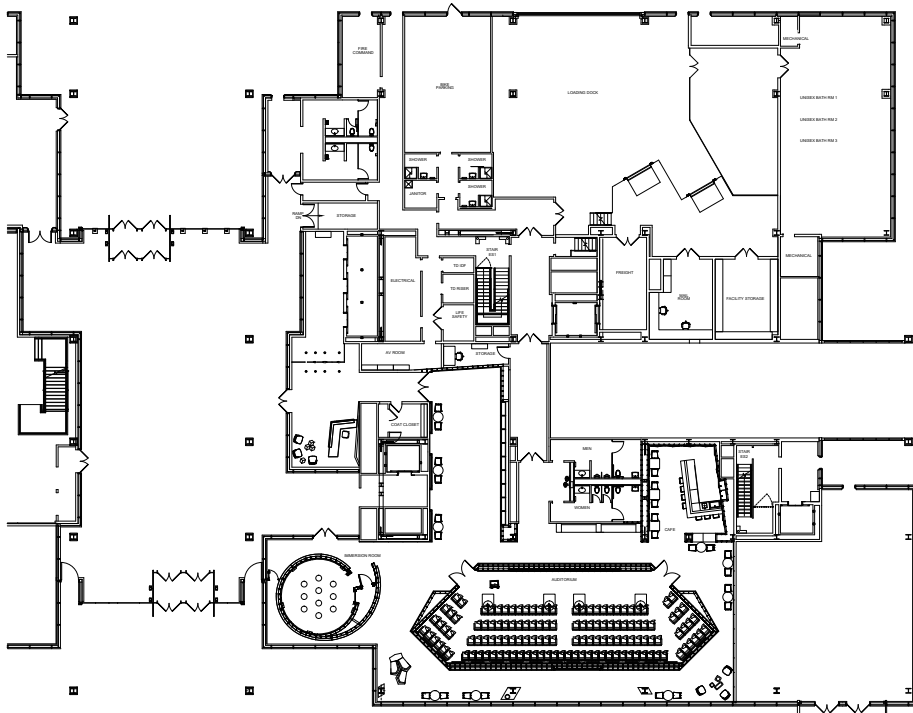


 Massachusetts
Institute of
Technology

FLOOR PLANS

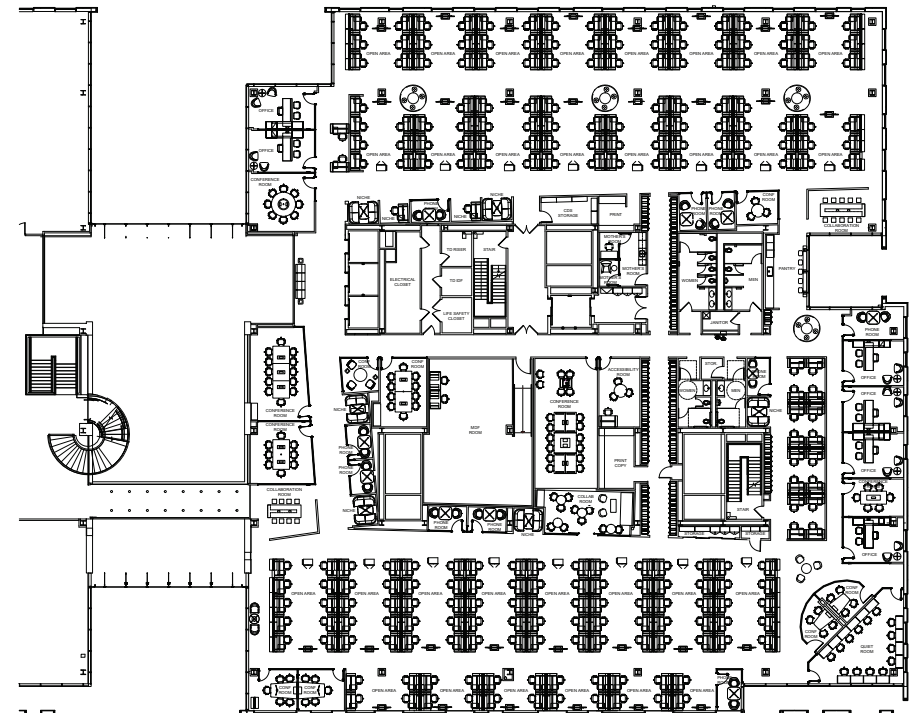
1ST FLOOR

15,368 SF



2ND FLOOR

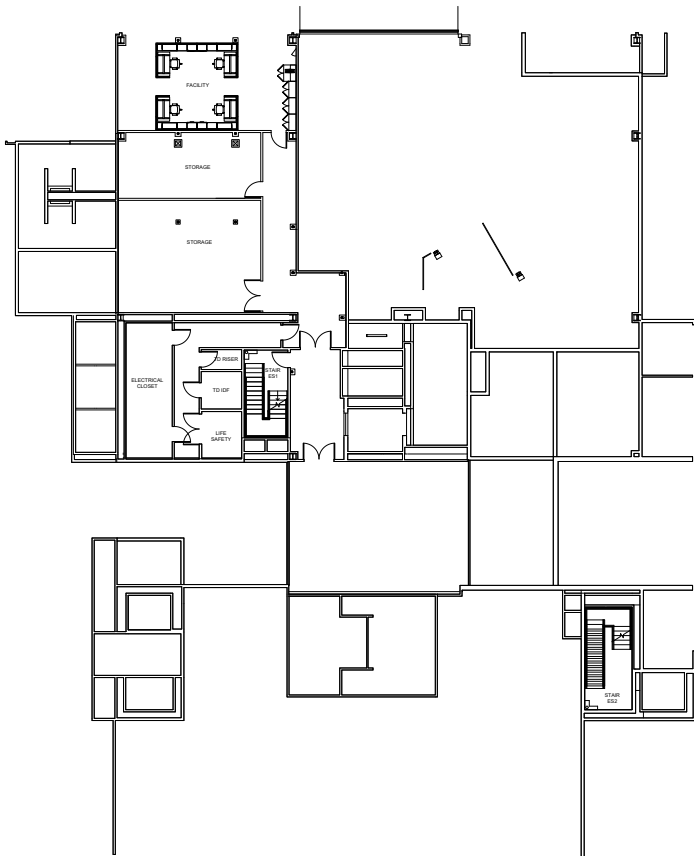
38,984 SF



FLOOR PLANS

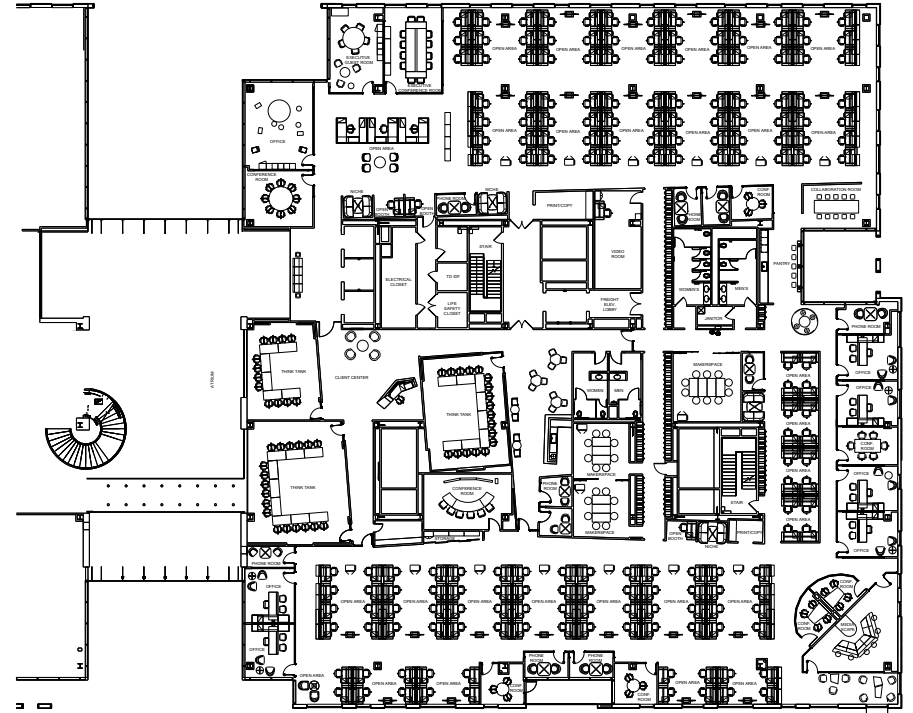
MEZZ

3,500 SF



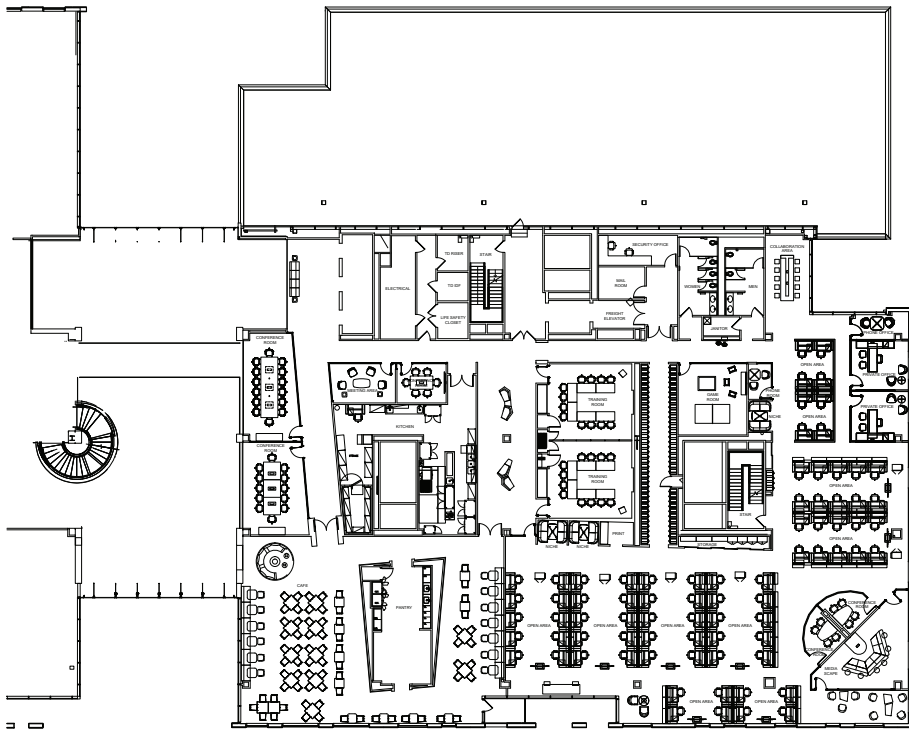
4TH FLOOR

39,006 SF



FLOOR PLANS

5TH FLOOR 27,197 SF





HIGH-END OFFICE
OPPORTUNITY IN
KENDALL SQUARE

75 BINNEY STREET

CAMBRIDGE, MA

FOR MORE INFORMATION AND TO TOUR
THIS OPPORTUNITY, PLEASE CONTACT:

CONNOR BARNES

connor.barnes@cushwake.com

617 877 8798

DAVE THOMANN

david.thomann@cushwake.com

617 204 4139

GREY GETTLEMAN

grey.gettleman@cushwake.com

781 801 2521

