



**WORLD
TRADE CENTER**
at CITY CREEK

Jordan Johnson
801.321.8711
Jordan.Johnson@propertyreserve.org

Address

60 East South Temple, Salt Lake City, Utah 84101



World Trade Overview

Class-A Office Building
384,451 square feet
22 floors
Built in 1985

World Trade Center at City Creek is a Class-A, twenty-two story, multi-tenant office building with a prestigious South Temple address in the heart of Salt Lake City's central business district. The building includes a remodeled main lobby and elevator system, fitness center with showers, and conference and lounge areas. World Trade features on-site property management, a conference room amenity, covered garage parking, and nearby access to City Creek Center, one of the nation's largest and most acclaimed mixed-use downtown redevelopment projects. This unique environment features a retractable glass roof, the very popular City Creek Center food court, a creek that runs through the property, a pedestrian sky bridge and more. City Creek Center features world-class fashion and dining destinations with over 100 national stores and restaurants.



Elevate at City Creek

All City Creek tenants have access to the amenity center, Elevate. Equipped with fitness center, showers, pickle ball, golf simulator, and basketball



Parking

Underground, covered, and surface parking available at prevailing market rates

Public Transit

Within easy walking distance to bus stations, TRAX stations, and Frontrunner stations

Lease Rate

Modified gross lease

Improvements

Generous TI packages available

AMENITIES AT WORLD TRADE CENTER



GYM



Lounge



Training Room

Suite 700

Rentable Square Feet: 16,422

Lease Rates: \$36.00-\$37.00/RSF

Status: Available

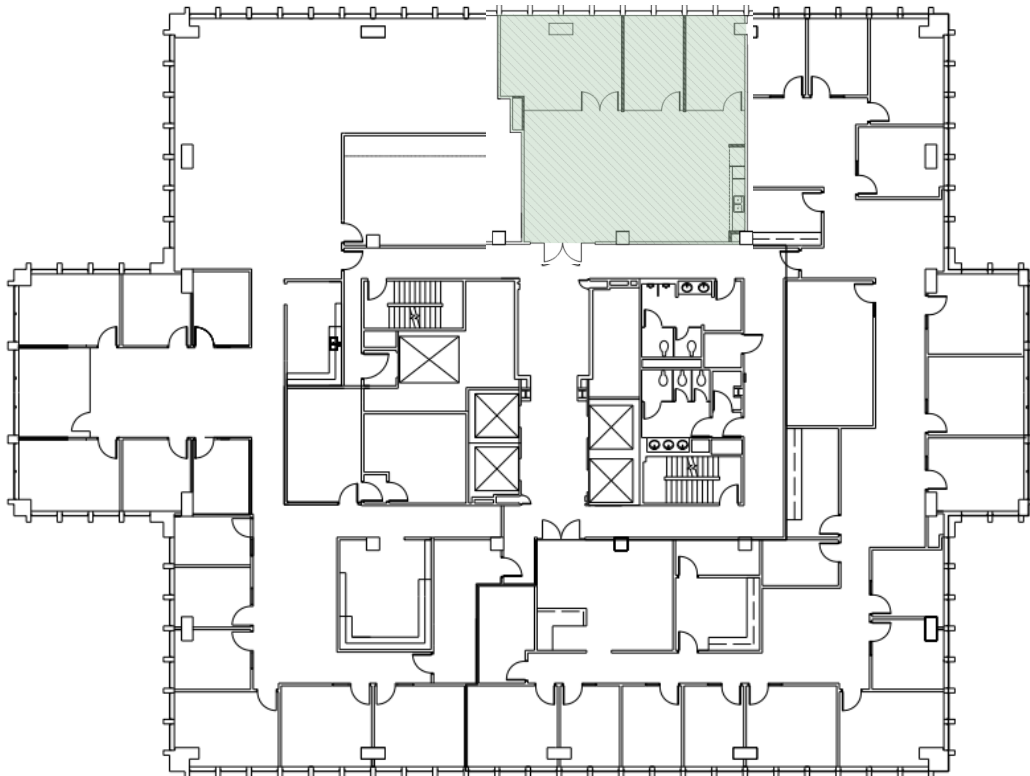
Condition: Prior design intact and ready for occupancy



Suite 960

Rentable Square Feet: 1,702
Lease Rates: \$36.00-\$37.00/RSF

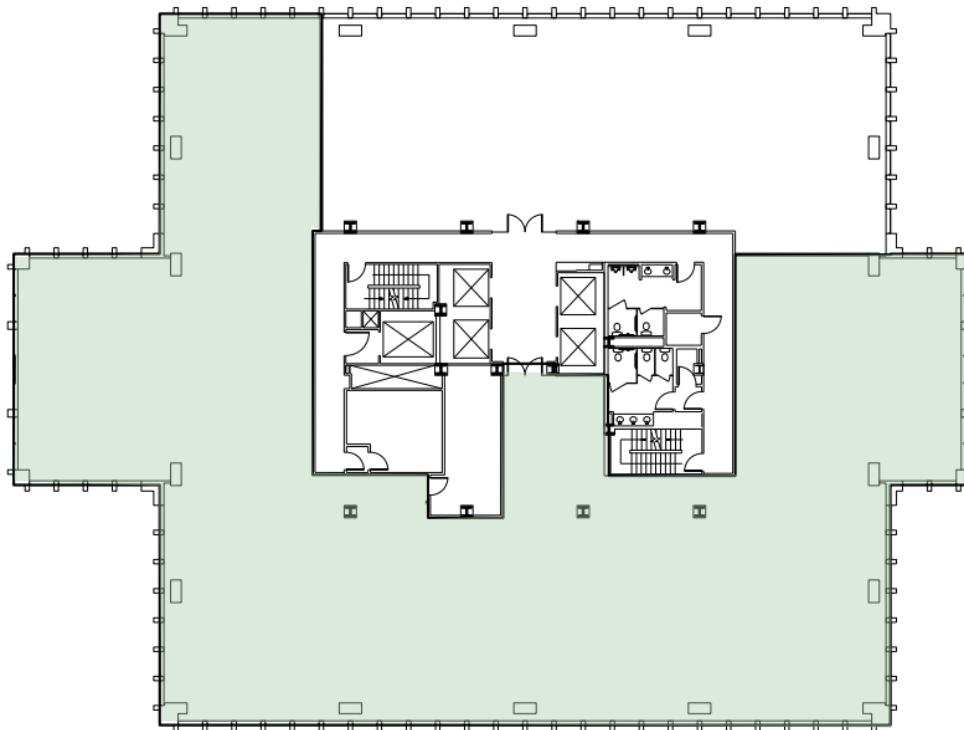
Status: Available August 1, 2026
Condition: Future Spec Suite



Suite 1500

Rentable Square Feet: 12,026
Lease Rate: \$38.00-\$40.00/RSF

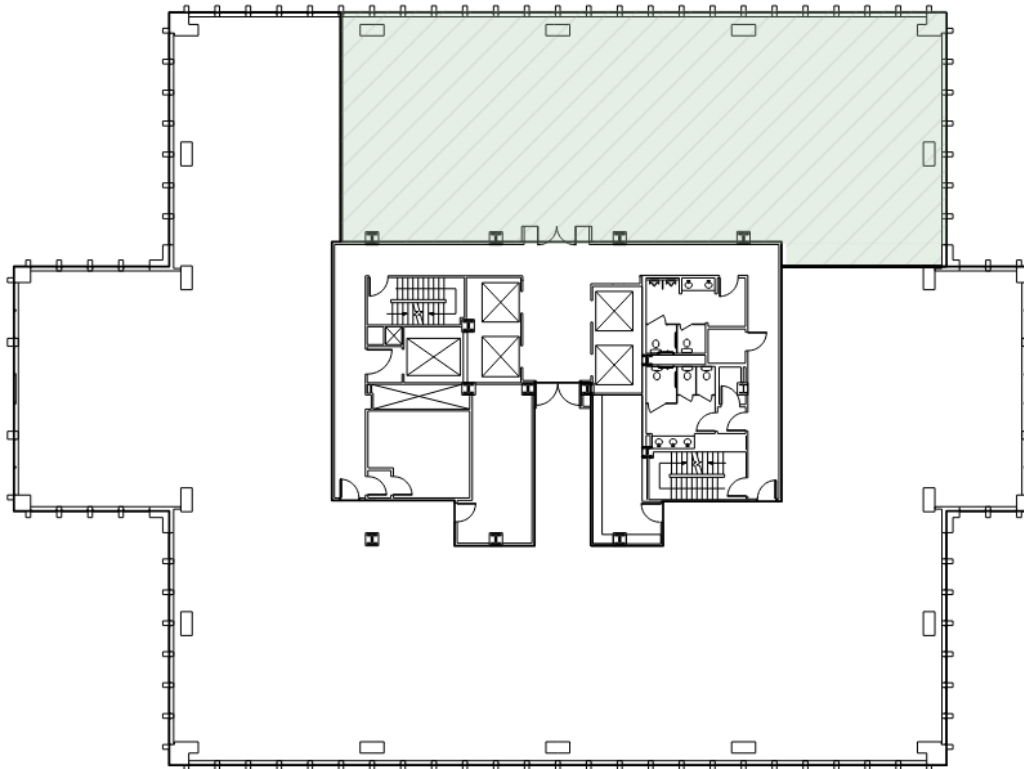
Status: Available
Condition: Prior design intact and ready for occupancy



Suite 1550

Rentable Square Feet: 4,393
Lease Rate: \$38.00-\$40.00/RSF

Status: Available
Condition: Prior design intact and ready for occupancy



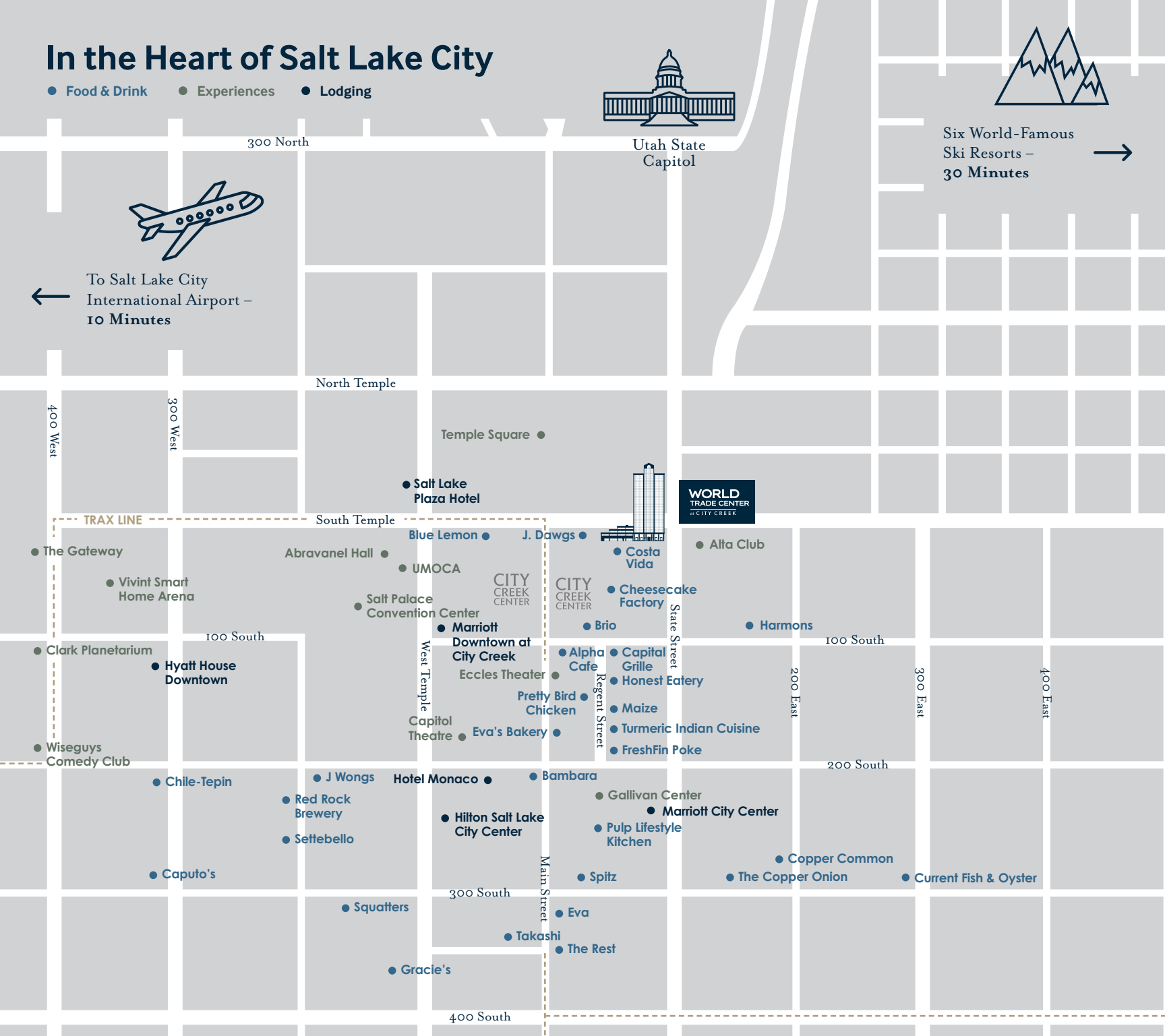
In the Heart of Salt Lake City

- Food & Drink
- Experiences
- Lodging



Six World-Famous
Ski Resorts –
30 Minutes →

← To Salt Lake City
International Airport –
10 Minutes



Contact

Jordan Johnson 801.321.8711
Jordan.Johnson@propertyreserve.org



PROPERTY
RESERVE