

**SVR** &  
Commercial



Warehouse/Showroom Property **For Sale**

908 WEST HILL AVENUE, VALDOSTA, GA 31601

# PREVIOUS ASHLEY FURNITURE WAREHOUSE

**KIMBERLY SIEVERT** **GEORGE ROBERTS**

904.631.6335

386.623.4477

ksievert@svrcom.com

grobarts@icloud.com

Exclusively Presented By: SVR Commercial & ERA One Team Realty

100 Fairway Park Blvd, Unit 2200, Ponte Vedra Beach, FL 32082

[svrcommercial.com](http://svrcommercial.com)

# PREVIOUS ASHLEY FURNITURE SHOWROOM

908 WEST HILL AVENUE, VALDOSTA, GA 31601

## CONTENTS

PROPERTY INFORMATION	3
LOCATION INFORMATION	7
DEMOGRAPHICS	13
ADVISOR BIOS	15

### PRESENTED BY:

#### KIMBERLY SIEVERT

Commercial Broker Associate

O: 904.631.6335

C: 904.631.6335

E: ksievert@svrcom.com

#### GEORGE ROBARTS

O: 386.623.4477

E: grobarts@icloud.com

## CONFIDENTIALITY & DISCLAIMER

All materials and information received or derived from SVR Commercial, LLC its directors, officers, agents, advisors, affiliates and/or any third party sources are provided without representation or warranty as to completeness, veracity, or accuracy, condition of the property, compliance or lack of compliance with applicable governmental requirements, developability or suitability, financial performance of the property, projected financial performance of the property for any party's intended use or any and all other matters.

Neither SVR Commercial, LLC its directors, officers, agents, advisors, or affiliates makes any representation or warranty, express or implied, as to accuracy or completeness of the any materials or information provided, derived, or received. Materials and information from any source, whether written or verbal, that may be furnished for review are not a substitute for a party's active conduct of its own due diligence to determine these and other matters of significance to such party. SVR Commercial, LLC will not investigate or verify any such matters or conduct due diligence for a party unless otherwise agreed in writing.

EACH PARTY SHALL CONDUCT ITS OWN INDEPENDENT INVESTIGATION AND DUE DILIGENCE.

Any party contemplating or under contract or in escrow for a transaction is urged to verify all information and to conduct their own inspections and investigations including through appropriate third party independent professionals selected by such party. All financial data should be verified by the party including by obtaining and reading applicable documents and reports and consulting appropriate independent professionals. SVR Commercial, LLC makes no warranties and/or representations regarding the veracity, completeness, or relevance of any financial data or assumptions. SVR Commercial, LLC does not serve as a financial advisor to any party regarding any proposed transaction. All data and assumptions regarding financial performance, including that used for financial modeling purposes, may differ from actual data or performance. Any estimates of market rents and/or projected rents that may be provided to a party do not necessarily mean that rents can be established at or increased to that level. Parties must evaluate any applicable contractual and governmental limitations as well as market conditions, vacancy factors and other issues in order to determine rents from or for the property.

Legal questions should be discussed by the party with an attorney. Tax questions should be discussed by the party with a certified public accountant or tax attorney. Title questions should be discussed by the party with a title officer or attorney. Questions regarding the condition of the property and whether the property complies with applicable governmental requirements should be discussed by the party with appropriate engineers, architects, contractors, other consultants and governmental agencies. All properties and services are marketed by SVR Commercial, LLC in compliance with all applicable fair housing and equal opportunity laws.



SECTION 1

# PROPERTY INFORMATION

# PREVIOUS ASHLEY FURNITURE WAREHOUSE

908 WEST HILL AVENUE, VALDOSTA, GA 31601



## OFFERING SUMMARY

Sale Price:	\$775,000
Building Size:	22,935 SF
Lot Size:	1.86 Acres
Year Built:	1985
Zoning:	Commercial

## PROPERTY OVERVIEW

SVR Commercial LLC and ERA One Team Realty are pleased to present an exceptional opportunity to acquire a prime 22,935 SF warehouse situated on a 1.86-acre parcel in Valdosta, GA. Originally built as an Ashley Furniture showroom, the property features a striking front façade with expansive windows, providing abundant natural light. The building includes two loading docks and one drive-in door at the rear for efficient operations. Inside, the layout consists of a main office area with the remainder offering a wide-open floor plan, allowing for flexible use. Offered at a competitive price, this property presents an excellent opportunity for an owner-user or investor.

## PROPERTY HIGHLIGHTS

- Generous square footage supports production, storage, or multi-use configurations
- Open floor plan minimizes obstructions for flexible manufacturing workflows
- Multiple docking points accommodate efficient truck movements
- Ample parking accommodates employees and delivery personnel

# PREVIOUS ASHLEY FURNITURE WAREHOUSE

908 WEST HILL AVENUE, VALDOSTA, GA 31601



# PREVIOUS ASHLEY FURNITURE WAREHOUSE

908 WEST HILL AVENUE, VALDOSTA, GA 31601



# PREVIOUS ASHLEY FURNITURE WAREHOUSE

908 WEST HILL AVENUE, VALDOSTA, GA 31601



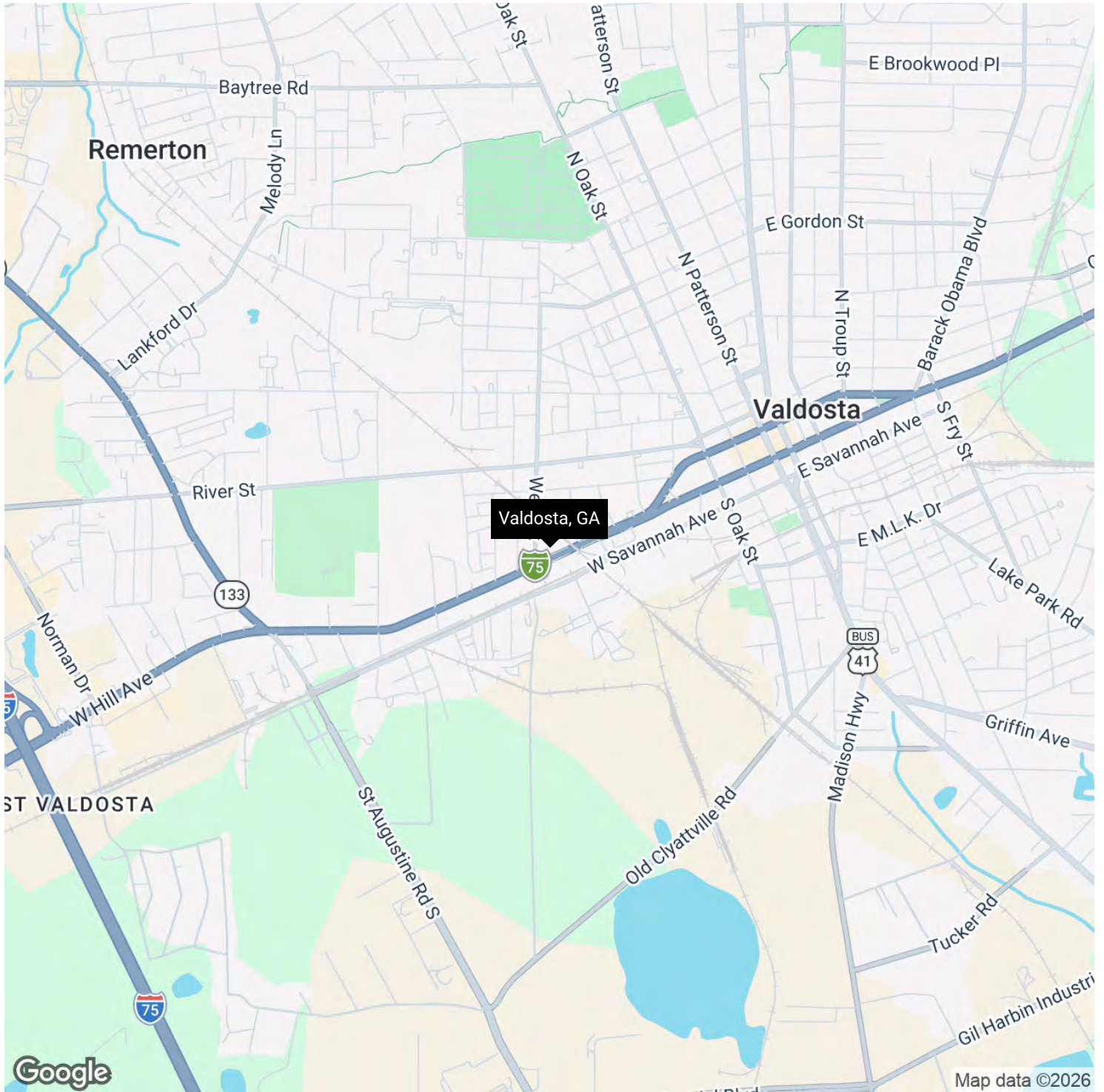


## SECTION 2

# LOCATION INFORMATION

# PREVIOUS ASHLEY FURNITURE WAREHOUSE

908 WEST HILL AVENUE, VALDOSTA, GA 31601



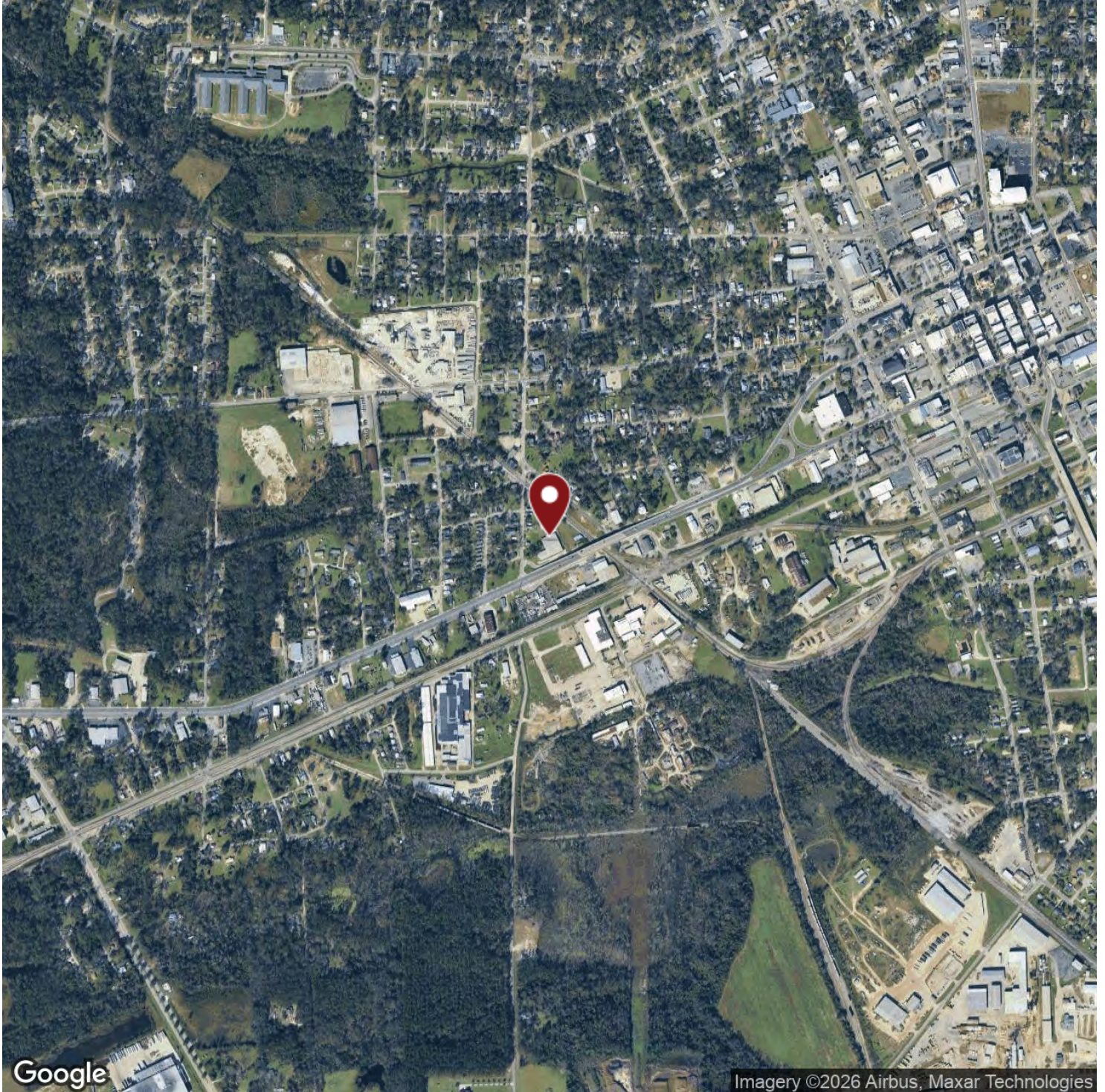
# PREVIOUS ASHLEY FURNITURE WAREHOUSE

908 WEST HILL AVENUE, VALDOSTA, GA 31601



# PREVIOUS ASHLEY FURNITURE WAREHOUSE

908 WEST HILL AVENUE, VALDOSTA, GA 31601



# PREVIOUS ASHLEY FURNITURE WAREHOUSE

908 WEST HILL AVENUE, VALDOSTA, GA 31601

## INVESTMENT OVERVIEW

---

Price	\$775,000
Price per SF	\$34

---

## OPERATING DATA

---

## FINANCING DATA

---

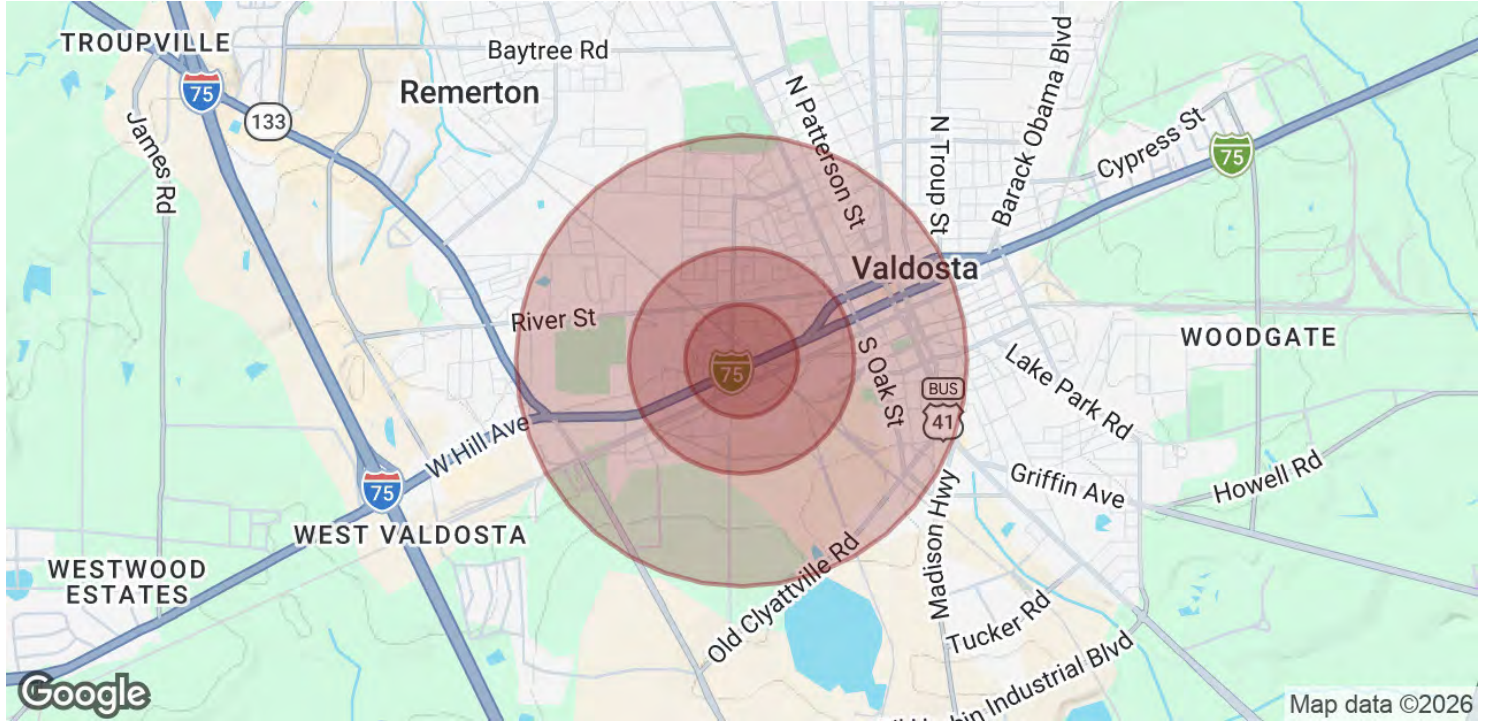


## SECTION 3

# DEMOGRAPHICS

# PREVIOUS ASHLEY FURNITURE WAREHOUSE

908 WEST HILL AVENUE, VALDOSTA, GA 31601



POPULATION	0.25 MILES	0.5 MILES	1 MILE
Total Population	141	593	3,327
Average Age	45.1	42.4	34.8
Average Age (Male)	35.4	31.7	28.9
Average Age (Female)	52.3	48.7	38.2
HOUSEHOLDS & INCOME	0.25 MILES	0.5 MILES	1 MILE
Total Households	68	266	1,405
# of Persons per HH	2.1	2.2	2.4
Average HH Income	\$42,371	\$44,347	\$41,569
Average House Value	\$77,675	\$84,057	\$77,169

2023 American Community Survey (ACS)



## SECTION 4

# ADVISOR BIOS

# Exclusive Sales Representatives



KIMBERLY SIEVERT  
SVR COMMERCIAL  
904.631.6335  
ksievert@svrcom.com

## TRANSACTION GUIDELINES

In addition to the limitations outlined herein, the Seller reserves the right to accept or reject any offer at any time and to extend the date for submission reason at its sole discretion.

## FORM OF PROPOSALS

Prospective purchasers will be required to submit in writing a detailed, non-binding proposal for the Property ("Proposal"). All Proposals must include the following:

- » Purchase Price
- » Initial deposit and nonrefundable deposit
- » Transaction expense responsibility
- » Contract, due diligence and closing periods
- » Sources of equity and debt
- » Detailed description of the principals of the prospective purchaser
- » Anticipated conditions to the execution of the transaction documents including shareholder's consent and board, regulatory or other approvals



GEORGE ROBARTS  
ERA ONE TEAM REALTY  
386.623.4477  
grobarts@icloud.com



Exclusively Presented By: SVR Commercial & ERA One Team Realty  
100 Fairway Park Blvd  
Unit 2200