

MULTI-USE UNIT TO LET

2734 SQ FT (254 SQM)

KALMARs

COMMERCIAL

020 7403 0600



375-377 NEW CROSS ROAD,
LONDON,
SE14 6AT

MULTI-USE UNIT TO LET

KALMARs

COMMERCIAL

020 7403 0600

2734 SQ FT (254 SQM)

LOCATION

The property is located on the west side of New Cross Road which is a 3-minute walk (0.2 miles) to New Cross station and 5-minutes (0.3 miles) from New Cross Gate Station. The parade attracts a variety of retailers who benefit from the local high-level student population.

TENURE

This will be a short-term lease of 3 years granted outside the L&T Act.

RENT

£36,000 per annum

COSTS

Business Rates – Info available on GOV.UK

VAT - payable on the rent

Legal Costs – Both parties to pay their own legal costs.

DESCRIPTION

The property comprises a double-fronted unit that runs over ground and basement levels which have been previously used as offices. The ground floor has two open-plan office spaces with a large bathroom. The basement has ample ceiling heights and an abundance of toilets. There is a possibility that the units can be split.



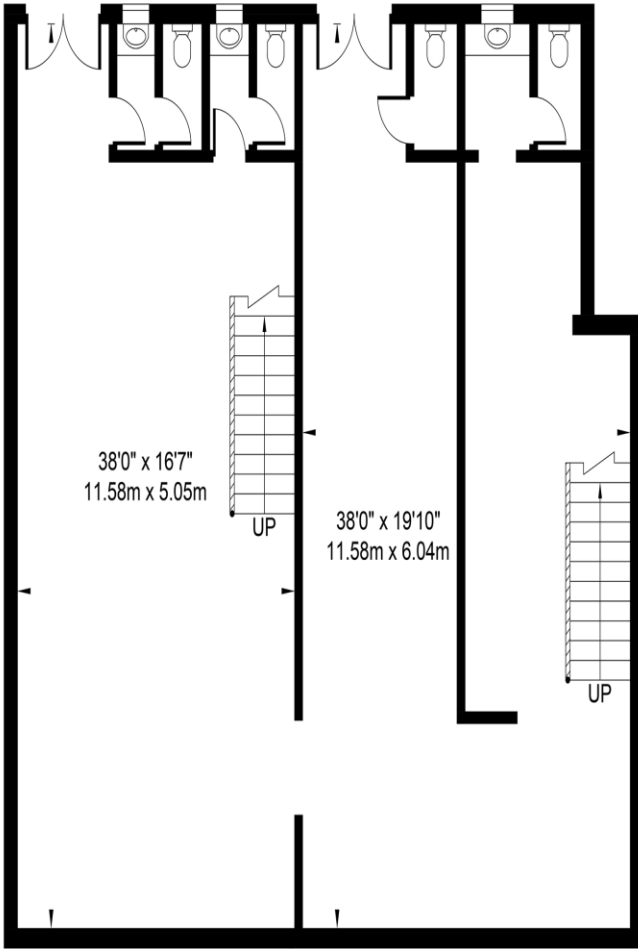
Viewing:
KALMARs Commercial

Catherine Agbaje
02074030600
catherinea@kalmars.com

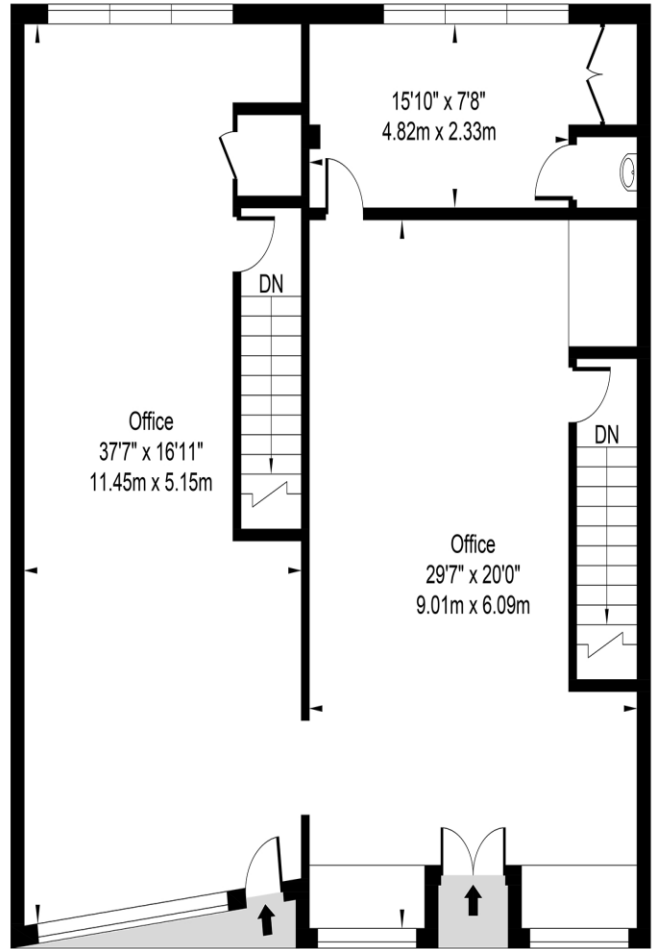
**375-377 NEW CROSS ROAD,
LONDON,
SE14 6AT**

New Cross Road,, SE14 6AT

Approx. Gross Internal Area 2733.49 Sq Ft - 253.95 Sq M



Basement



Ground Floor



For Illustration Purposes Only - Not To Scale - Floor Plan by inter Design Photography

www.interdesignphotography.com

This floor plan should be used as a general outline for guidance only.

All Measurements are approximate and for illustration purposes only as defined by the RICS code of Measuring Practice © 2022