

# FOR LEASE

Medical / Office Space

1,050 RSF

## 2551 N. Clark St. - Lincoln Park

CHICAGO, IL 60614



Suite 204



For more info, contact:

Dave Schraufnagel  
(773) 430 - 6406  
dave@d4realtyinc.com

D4 Realty, Inc.



### Details:

Spaces

**Suite 304:** Approx. 1,050 RSF, \$28/RSF, Gross - medical  
**Suite 204:** Approx. 1,050 RSF \$28/RSF, Gross - office

Location

Chicago's Lincoln Park Neighborhood

Notes

- Beautiful Landmark building in the heart of Lincoln Park
- A Few Short Blocks from Lake Shore Drive
- On-site Parking Available. On-site Management.
- Gross Leases (no pass-thrus for Taxes or Op. Exp.)

# FOR LEASE

Medical / Office Space

1,050 RSF

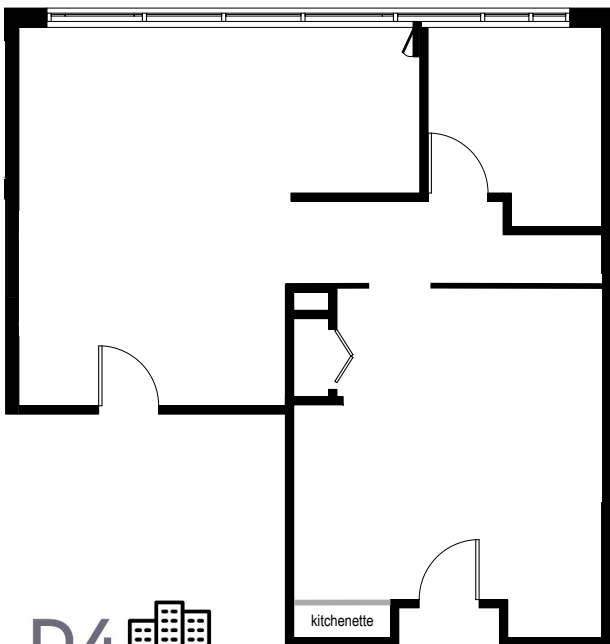
2551 N. Clark St. - Lincoln Park

CHICAGO, IL 60614



Suite 304

SUITE #304



Suite 204

