

Office | For Lease

CBRE

# 782 Johnnie Dodds Blvd

±1,245 Square Feet Available

Suite E  
Mount Pleasant  
South Carolina, 29464

Great location in the heart of Mount Pleasant



# Highlights

782 Johnnie Dodds is a multi building office park located in the heart of Mount Pleasant with great visibility from Highway 17

- + Ideally located in Mount Pleasant with easy access to downtown Charleston, I-526, and Highway 17
- + Abundant nearby amenities to include dining, shopping, lodging, parks, and more
- + Signage opportunity on Johnnie Dodds Boulevard
- + Suites consist of separate entrances with patios for outdoor seating
- + Abundant on-site surface parking
- + Suite E located in building A consists of 1,245 SF
- + Rate is \$30.00 /SF with tenant paying interior janitorial and pro-rata share of increases in taxes and insurance over the base year amounts

# \$30.00

Per Square Foot

# 1,245

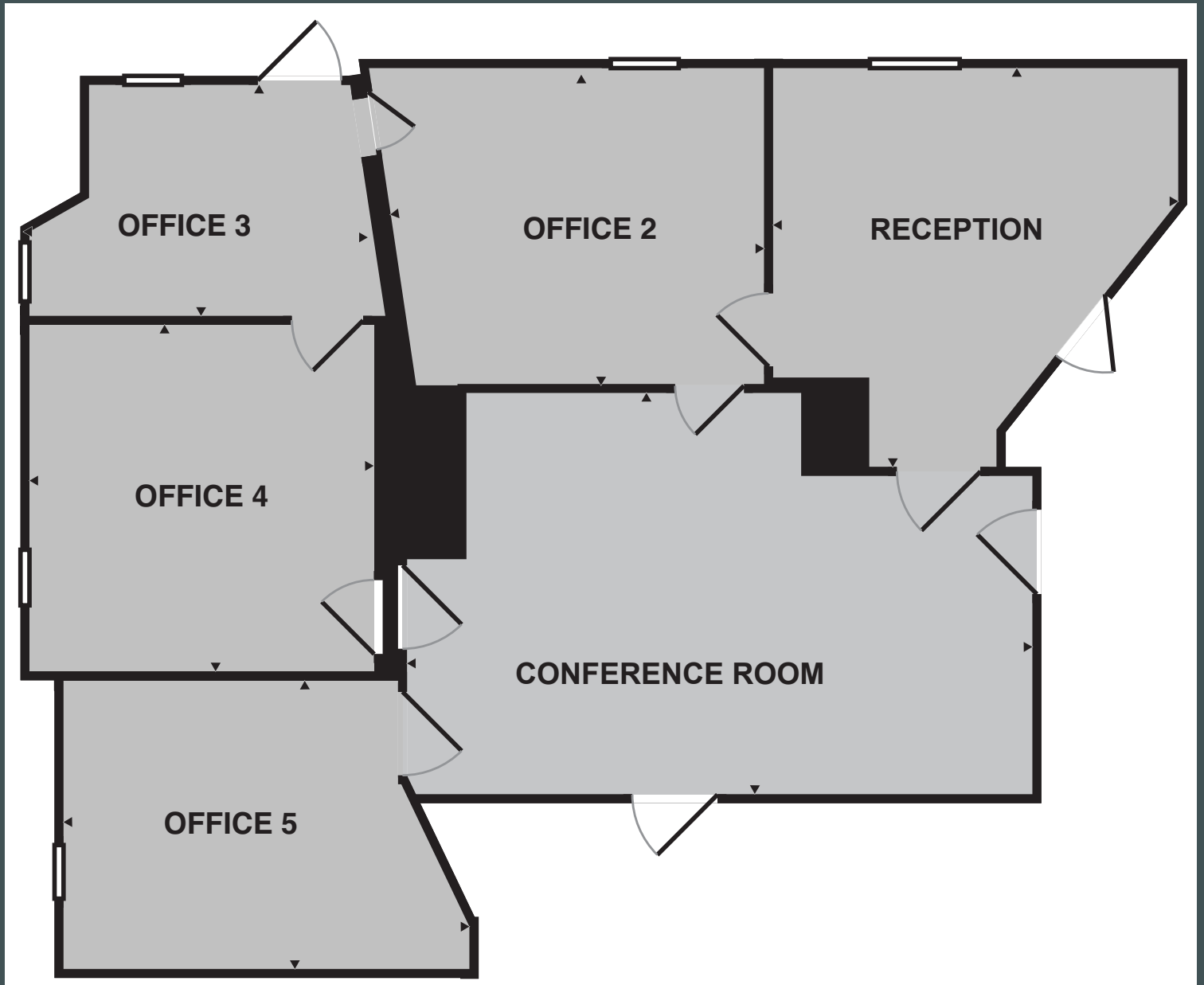
Square Feet



# Interior Pictures



# Floor Plan



Building A: Suite E  
±1,245 Square Feet



## Contact Us

**Charles Carmody**

Senior Vice President

+1 843 577 1155

[charles.carmody@cbre.com](mailto:charles.carmody@cbre.com)

**Ryan Carmody**

Vice President

+1 843 577 1162

[ryan.carmody@cbre.com](mailto:ryan.carmody@cbre.com)

© 2026 CBRE, Inc. All rights reserved. This information has been obtained from sources believed reliable, but has not been verified for accuracy or completeness. You should conduct a careful, independent investigation of the property and verify all information. Any reliance on this information is solely at your own risk. CBRE and the CBRE logo are service marks of CBRE, Inc. All other marks displayed on this document are the property of their respective owners, and the use of such logos does not imply any affiliation with or endorsement of CBRE. Photos herein are the property of their respective owners. Use of these images without the express written consent of the owner is prohibited.