

±16,800 - 42,000 SF Industrial — LB Port

CB COLDWELL BANKER
COMMERCIAL BLAIR

FOR LEASE



Presented By:

John Eddy | Executive Vice President

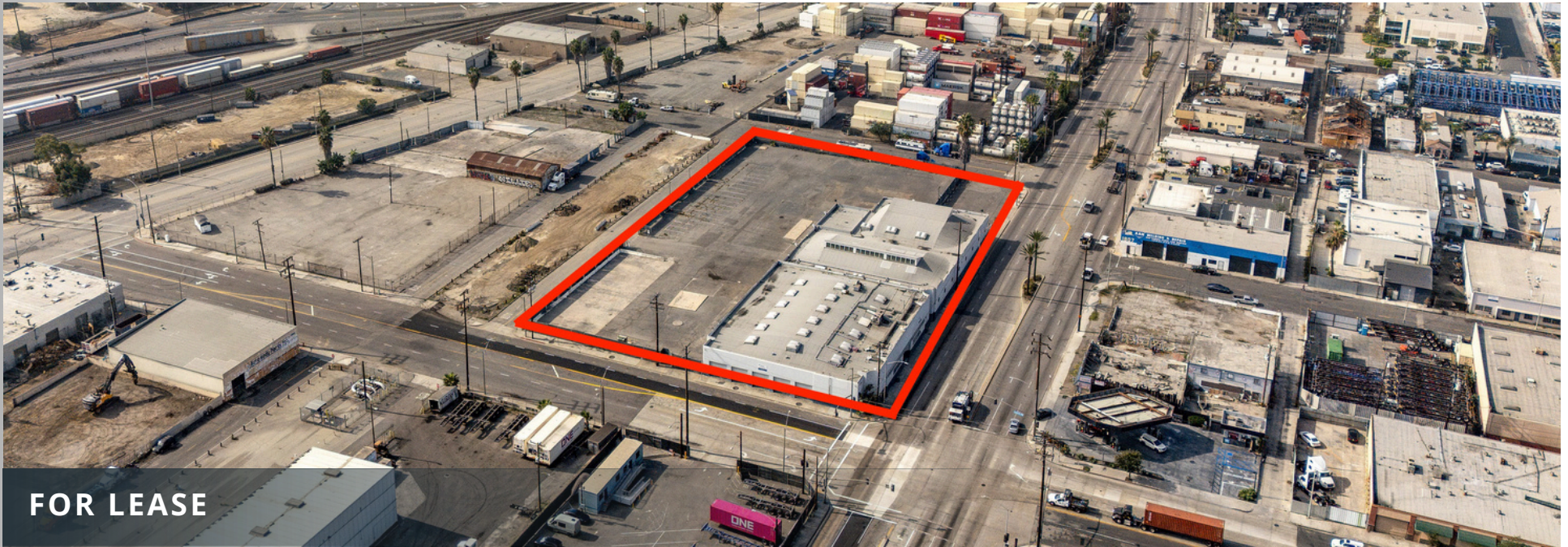
Patrick Michel | Vice President

Matthew Chung | Associate

1700 W. Anaheim St
LONG BEACH, CA

1700 W. Anaheim St.

LONG BEACH, CA



FOR LEASE

42,000 SF Bldg

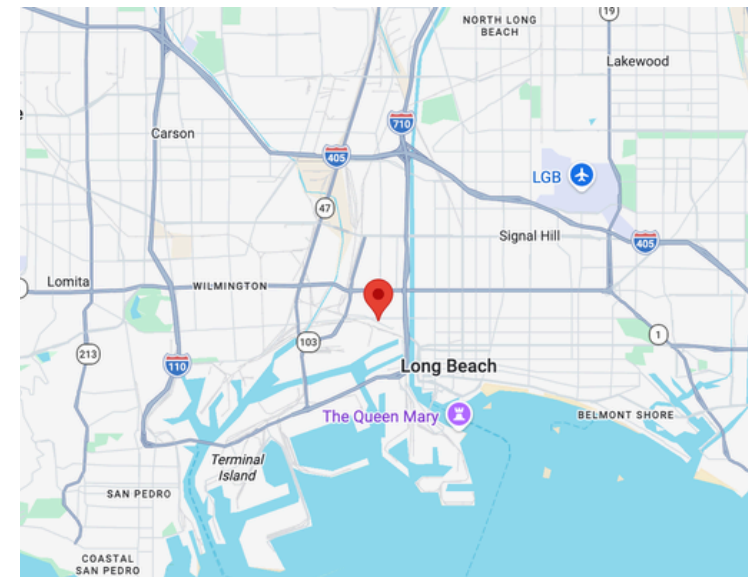
109,336 SF Lot

AVAILABLE NOW

Contact Broker to Show

PROPERTY HIGHLIGHTS

Available SF	±16,292 - 42,000 SF
Lot SF	±109,336 SF
Clear Height	12'-18'
GL Doors	5
Security	Gated & Fenced
Zoning	LBIG
Year Built	1941
Rate:	\$0.75 PSF Lot
Type:	NNN



1700 W. Anaheim St.

LONG BEACH, CA



1700 W. Anaheim St.
LONG BEACH, CA

 COLDWELL BANKER
COMMERCIAL | BLAIR



PORT OF LONG BEACH



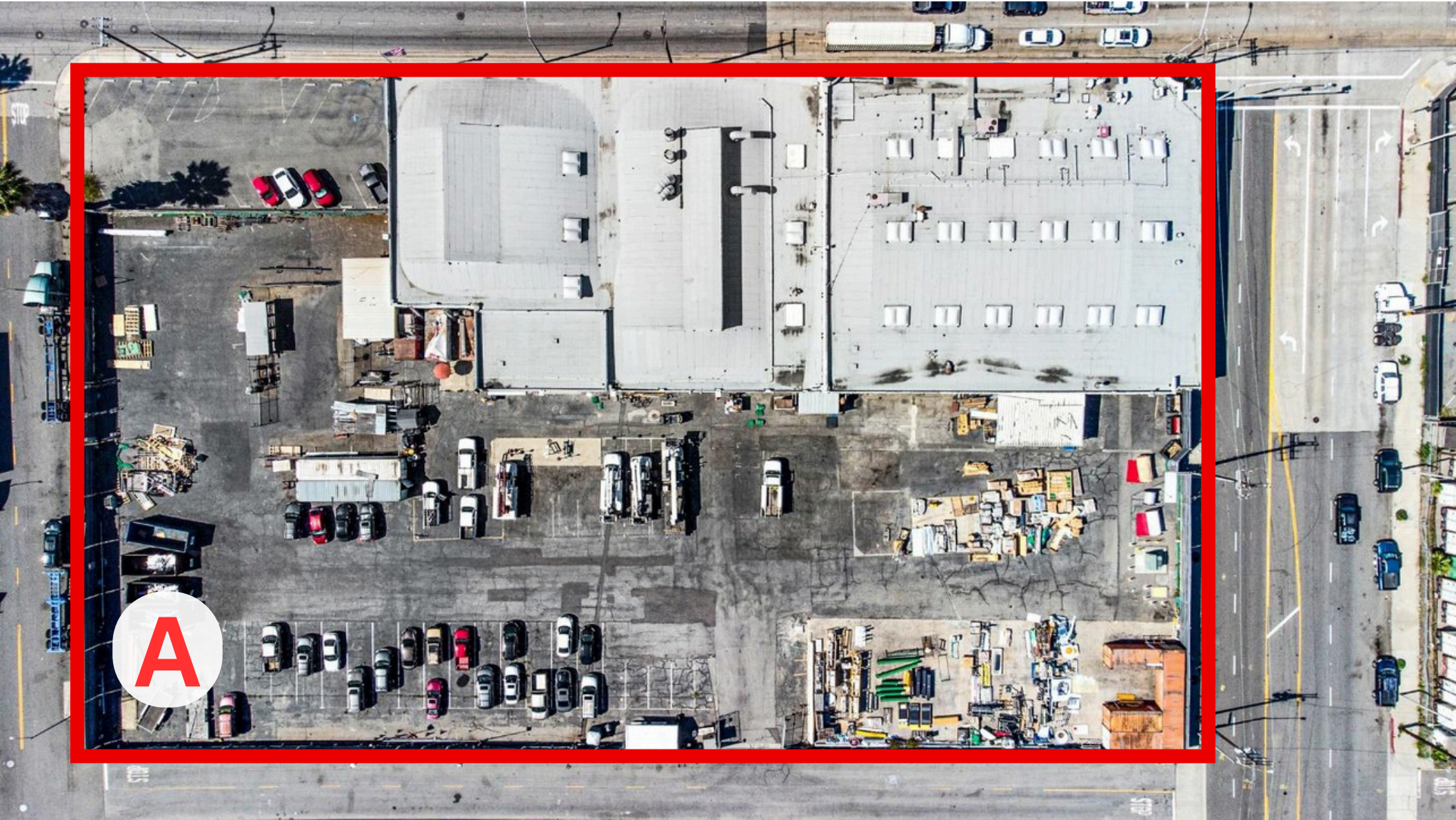
PORT OF LOS ANGELES



1700 W. Anaheim St.
LONG BEACH, CA

OPTION A

42,000 SF Bldg | 109,336 SF Lot



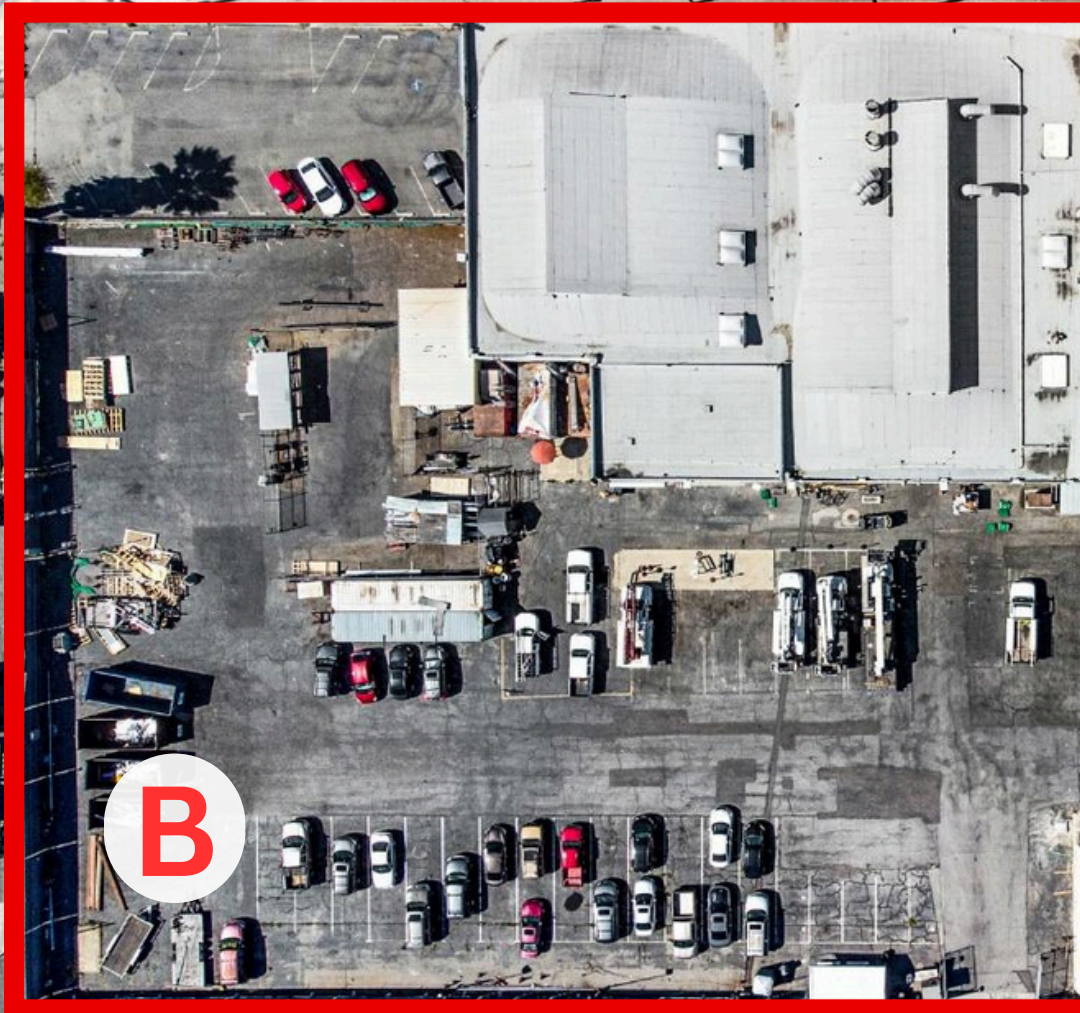
1700 W. Anaheim St.

LONG BEACH, CA

OPTION B AND C

**B) 18,610 SF Bldg
71,635 SF Lot**

**C) 23,390 SF Bldg
37,701 SF Lot**



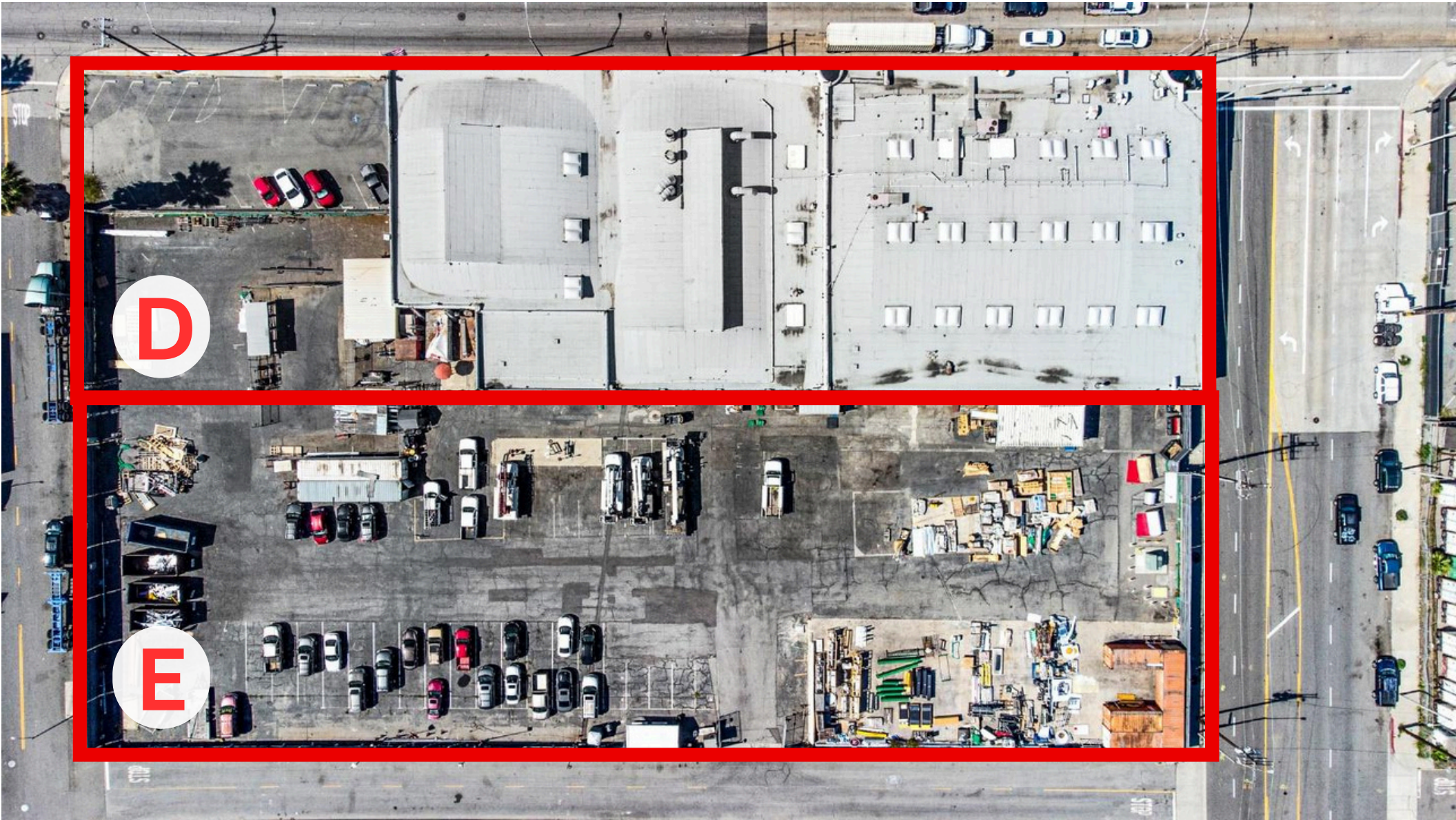
1700 W. Anaheim St.

LONG BEACH, CA

OPTION D AND E

D) 42,000 SF Bldg
51,426 SF Lot

E) 57,910 SF YARD





COLDWELL BANKER
COMMERCIAL
BLAIR

John Eddy | Executive Vice President
(562) 685-5440
Jeddy@cbcblair.com
Lic. #01006806

Patrick Michel | Vice President
(323) 594-0284
Patrick@cbcblair.com
Lic. #01924800

Matthew Chung | Associate
(562) 667-7335
Mchung@cbcblair.com
Lic. #02283482