



---

# MARITIME PLACE

---

350 Cedar Street, Suite 200  
Pensacola, FL. 32502

## Premium Downtown Waterfront Office Space

A rare sublease opportunity in one of Pensacola's most sought-after professional addresses.

### PROPERTY VIDEO

#### Property Features

Beautifully Appointed  
16,732 SF  
Class A Office

Entire 2<sup>nd</sup> Floor Space in  
Downtown Waterfront  
Office Building

90 Workstations |  
10 Private Offices |  
5 Conference Rooms

Located immediate to  
Governmental, Judicial, &  
Financial Institutions.

---

# Waterfront Elegance Meets Downtown Energy

Modern, Class A office space with panoramic views, just steps from Blue Wahoos Stadium.

## Executive-Level Functionality

Suite 200 is purpose-built for productivity, the layout supports both focused work and team collaboration, with ample room for department-level privacy.

## Key Highlights

- 16,743 SF – Entire 2nd floor available
- Freshly remodeled in 2022 with modern, high-end finishes
- Approximately 90 workstations
- 10 private offices
- 4 executive conference rooms plus 1 oversized team conference room
- Striking elevator lobby with two private glass entryways and fob access
- State-of-the-art kitchen & dining area, ideal for team gatherings
- Abundant natural light with panoramic water views

## Parking

Tenant will have the right to use 50 on-site parking spaces at no additional cost. This includes 8 reserved spaces for exclusive use and 42 non-exclusive spaces shared with others. In the event of future parking reconfigurations, the tenant will retain access to these same allocations in reasonably comparable locations nearest to the building.

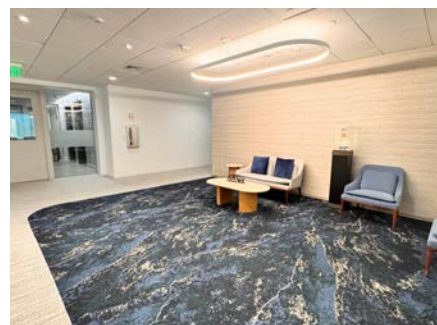
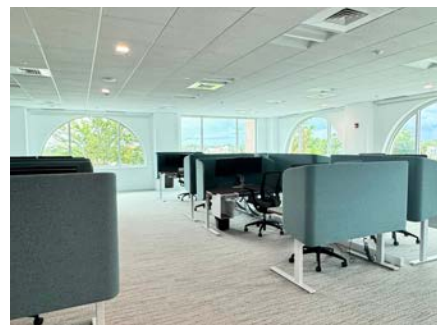




**350 CEDAR ST. SUITE 200**  
**PENSACOLA, FL 32502**

### **Modern, Turnkey Suite with Class A Interiors**

The second floor of the Maritime Office Building underwent a full renovation in 2022, resulting in a modern, high-end workspace designed to impress clients and inspire teams. From its sleek glass entryways to its bright, open floor plan, the space blends contemporary finishes with functional design. The elevator lobby welcomes guests with striking architectural detail, while the interiors feature a thoughtful mix of open workstations, private offices, and collaborative areas. Every element has been curated for a professional yet comfortable working environment.



### **Sublease Specifics**

- Sublease Terms- Through October 2026 (longer term negotiable through landlord).
- Rate- \$25.00 PSF Full Service Gross
- Monthly Rent: \$34,881.25

For more information

**Tina Tortomase, MiCP**

e: [ttortomase@naipensacola.com](mailto:ttortomase@naipensacola.com)  
m: 850 384-5818

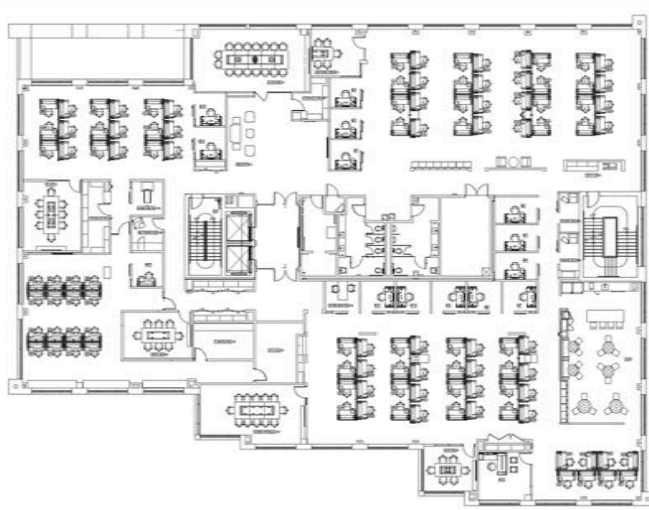


# Maritime Place

350 CEDAR STREET, SUITE 200- ENTIRE 2<sup>ND</sup> FLOOR  
PENSACOLA, FL 32502

## Blend lifestyle + business climate:

- Part of Pensacola's thriving downtown business district
- Surrounded by legal, financial, and creative firms
- Close to I-110 with easy regional access
- Walkable amenities for client entertainment and employee satisfaction



## Call to schedule a tour

For more information

**Tina Tortomase, MiCP**

e: [ttortomase@naipensacola.com](mailto:ttortomase@naipensacola.com)

m: 850-384-5818