

39,248 SF AVAILABLE FOR LEASE



ST. STEPHEN'S SCHOOL

2123 CLINTON AVE S
MINNEAPOLIS, MN 55404





SCHOOL FOR LEASE



BUILDING SIZE
39,248 SF



SPACE AVAILABLE
Entire building available



PID
34-029-24-11-0123



of CLASSROOMS
18



OUTDOOR SPACE
Playground, parking lot



OCCUPANCY DATE
July 2022



TAXES
Tax Exempt



LEASE RATE
Negotiable



39,248 SF AVAILABLE FOR LEASE

ST. STEPHEN'S SCHOOL

2123 CLINTON AVE S
MINNEAPOLIS, MN 55404



CONTACT

SAM GLEASON

Associate

+1 952 241 1111

sam.gleason@cushwake.com



39,248 SF AVAILABLE FOR LEASE

ST. STEPHEN'S SCHOOL

2123 CLINTON AVE S
MINNEAPOLIS, MN 55404



CONTACT

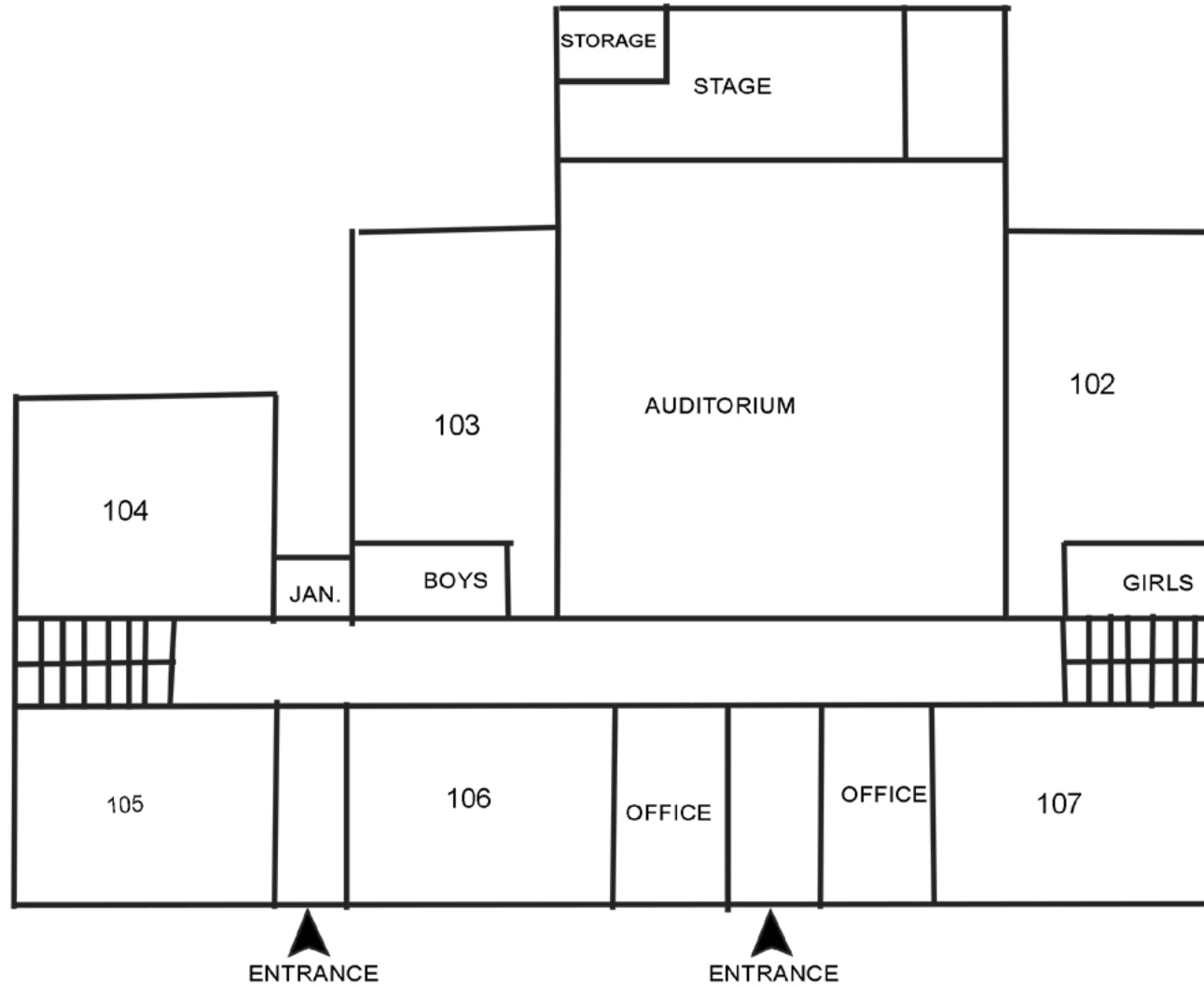
SAM GLEASON

Associate

+1 952 241 1111

sam.gleason@cushwake.com

MAIN FLOOR



39,248 SF AVAILABLE FOR LEASE

ST. STEPHEN'S SCHOOL

2123 CLINTON AVE S
MINNEAPOLIS, MN 55404



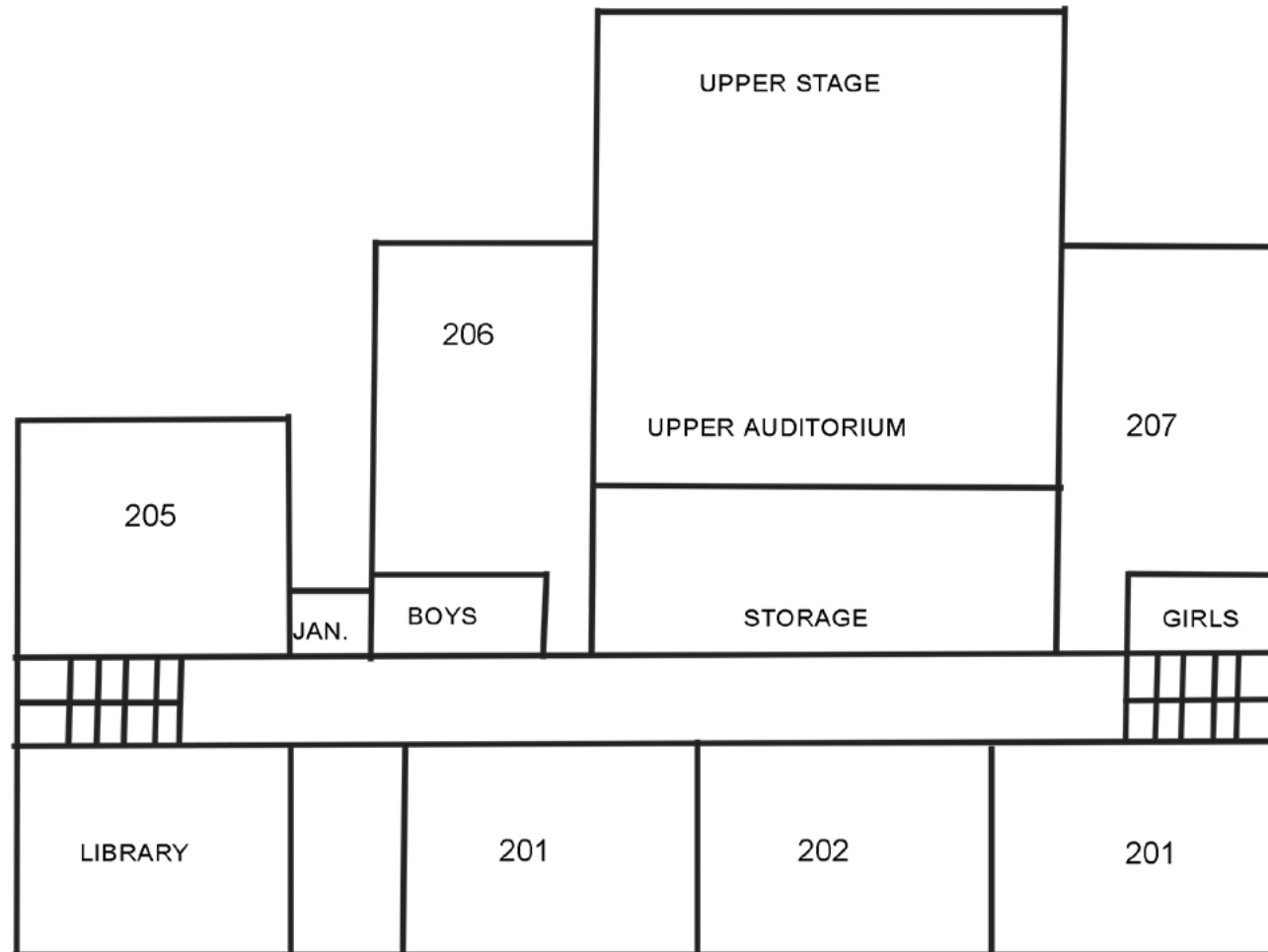
SAM GLEASON

Associate

+1 952 241 1111

sam.gleason@cushwake.com

SECOND FLOOR



39,248 SF AVAILABLE FOR LEASE

ST. STEPHEN'S SCHOOL

2123 CLINTON AVE S
MINNEAPOLIS, MN 55404



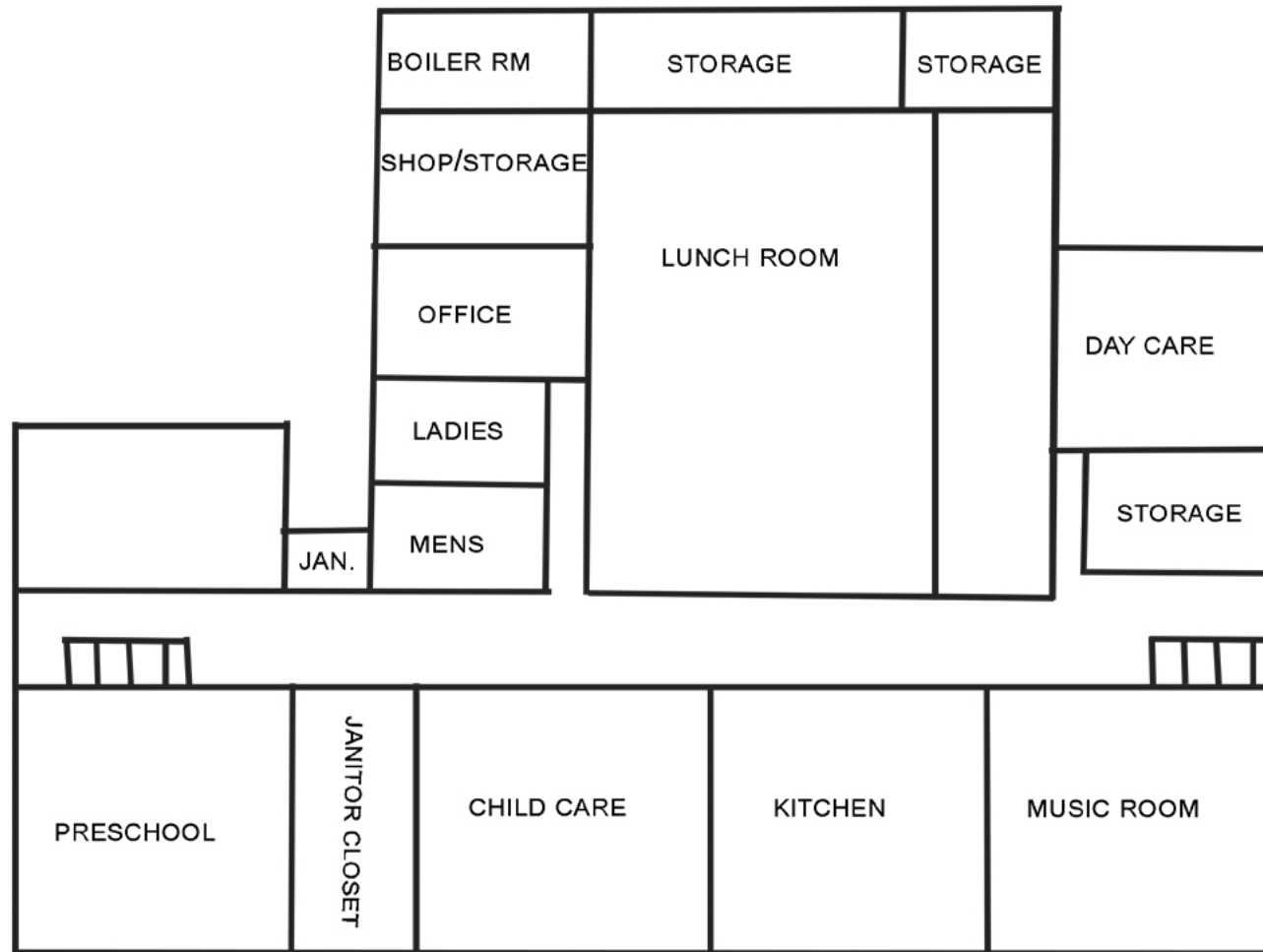
SAM GLEASON

Associate

+1 952 241 1111

sam.gleason@cushwake.com

BASEMENT FLOOR



39,248 SF AVAILABLE FOR LEASE

ST. STEPHEN'S SCHOOL

2123 CLINTON AVE S
MINNEAPOLIS, MN 55404



SAM GLEASON

Associate

+1 952 241 1111

sam.gleason@cushwake.com



39,248 SF AVAILABLE FOR LEASE

ST. STEPHEN'S SCHOOL

2123 CLINTON AVE S
MINNEAPOLIS, MN 55404

CONTACT

SAM GLEASON

Associate

+1 952 241 1111

sam.gleason@cushwake.com



Clinton Ave S

S 4th Ave

E 22nd St

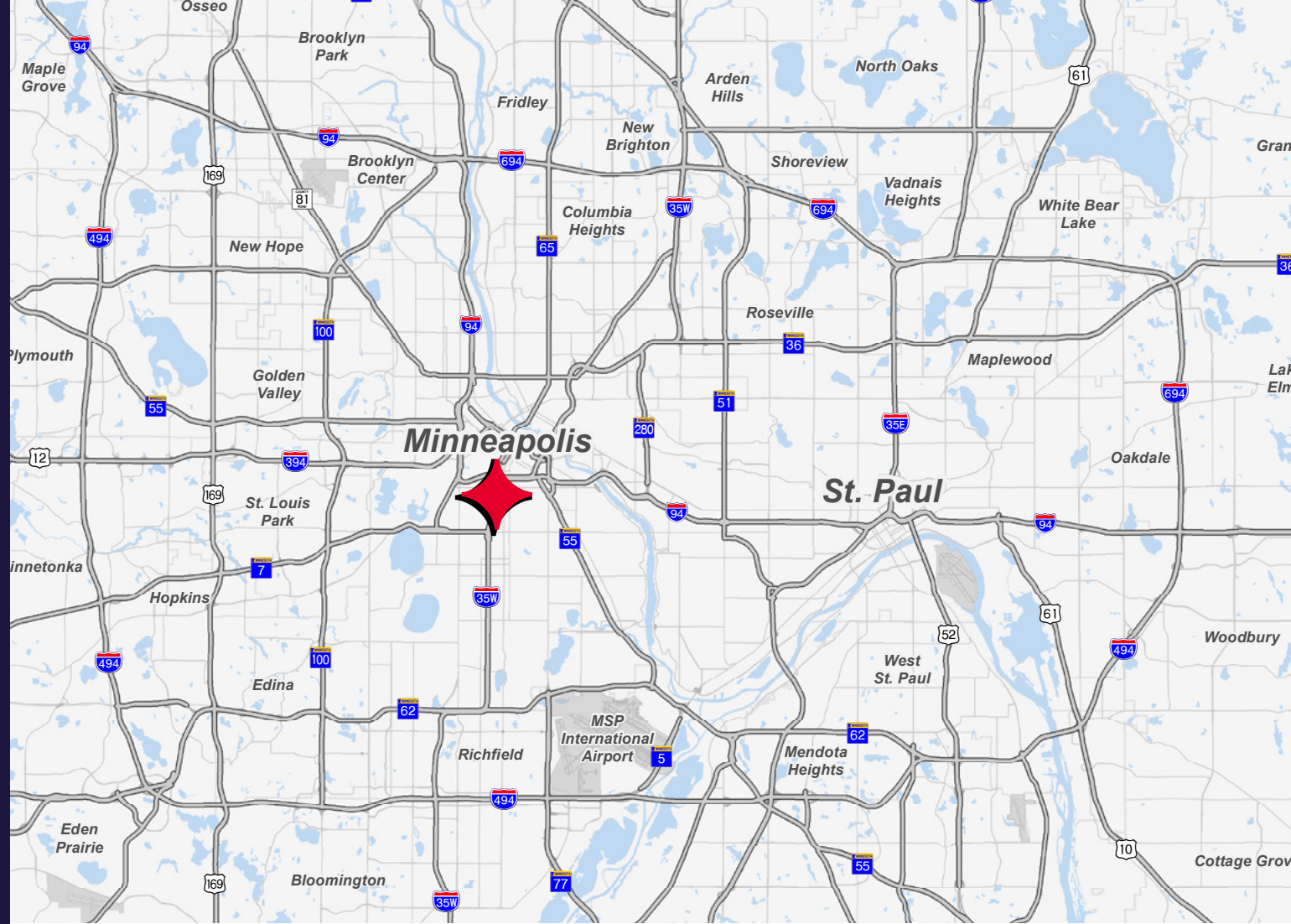




39,248 SF AVAILABLE FOR LEASE

ST. STEPHEN'S SCHOOL

2123 CLINTON AVE S
MINNEAPOLIS, MN 55404



DEMOGRAPHICS



261,960
POPULATION
Within 3 Miles

504,538
POPULATION
Within 5 Miles



\$88,542
AVG. INCOME
Within 3 Miles

\$101,381
AVG. INCOME
Within 5 Miles



116,858
TOTAL HOUSEHOLDS
Within 3 Miles

217,510
TOTAL HOUSEHOLDS
Within 5 Miles



31.6
MEDIAN AGE
Within 3 Miles

33.8
MEDIAN AGE
Within 5 Miles

CONTACT

SAM GLEASON

Associate
+1 952 241 1111

sam.gleason@cushwake.com



39,248 SF AVAILABLE FOR LEASE

ST. STEPHEN'S SCHOOL

2123 CLINTON AVE S
MINNEAPOLIS, MN 55404

CONTACT

SAM GLEASON

Associate

+1 952 241 1111

sam.gleason@cushwake.com



©2024 Cushman & Wakefield. All rights reserved. The information contained in this communication is strictly confidential. This information has been obtained from sources believed to be reliable but has not been verified. NO WARRANTY OR REPRESENTATION, EXPRESS OR IMPLIED, IS MADE AS TO THE CONDITION OF THE PROPERTY (OR PROPERTIES) REFERENCED HEREIN OR AS TO THE ACCURACY OR COMPLETENESS OF THE INFORMATION CONTAINED HEREIN, AND SAME IS SUBMITTED SUBJECT TO ERRORS, OMISSIONS, CHANGE OF PRICE, RENTAL OR OTHER CONDITIONS, WITHDRAWAL WITHOUT NOTICE, AND TO ANY SPECIAL LISTING CONDITIONS IMPOSED BY THE PROPERTY OWNER(S). ANY PROJECTIONS, OPINIONS OR ESTIMATES ARE SUBJECT TO UNCERTAINTY AND DO NOT SIGNIFY CURRENT OR FUTURE PROPERTY PERFORMANCE.