



SALE  
OR  
LEASE

# 110 WALL STREET

ONAMIA, MN 56359

Position your business or investment in a highly visible location along the Highway 169 corridor in Onamia, MN. This versatile 20,071 square foot commercial building offers a rare opportunity to accommodate a wide range of uses including industrial, office, retail, and restaurant operations. The property features a flexible layout that can be utilized as a single-user facility or divided for multiple tenants, making it ideal for both owner-users and investors. With strong highway frontage, proximity to Mille Lacs Lake, and access at the junction of Highways 27 and 169, this property delivers both functionality and long-term value in a growing regional market.

## HUNTER STANEK

✉ HUNTER@GCPMN.COM

📞 612.500.7997

🌐 GONYEACOMMERCIAL.COM



# DETAILS



Address

**110 Wall Street  
Onamia, MN 56359**



Building Size

**20,071 SF Square Feet**



Date Available

**Now**



Office Square Footage

**3,750 Square Feet**



Warehouse Square Footage

**10,660 Square Feet**



Mezzanine Square Footage

**1,168 Square Feet**



Total Square Footage

**20,071 Square Feet**



Purchase Price

**\$1,250,000**



Rental Rate

**Negotiable**



Zoning

**C-1 Highway  
Commercial**



Year Built

**2005**



Ceiling Clear Height

**17.5' - 24.5'**



Property Taxes

**2025-\$26,616.00**



Sprinkler

**Yes**



Loading Access

**2 Drive-in Door  
2 Dock Door**

**HUNTER STANEK**

✉ [HUNTER@GCPMN.COM](mailto:HUNTER@GCPMN.COM)

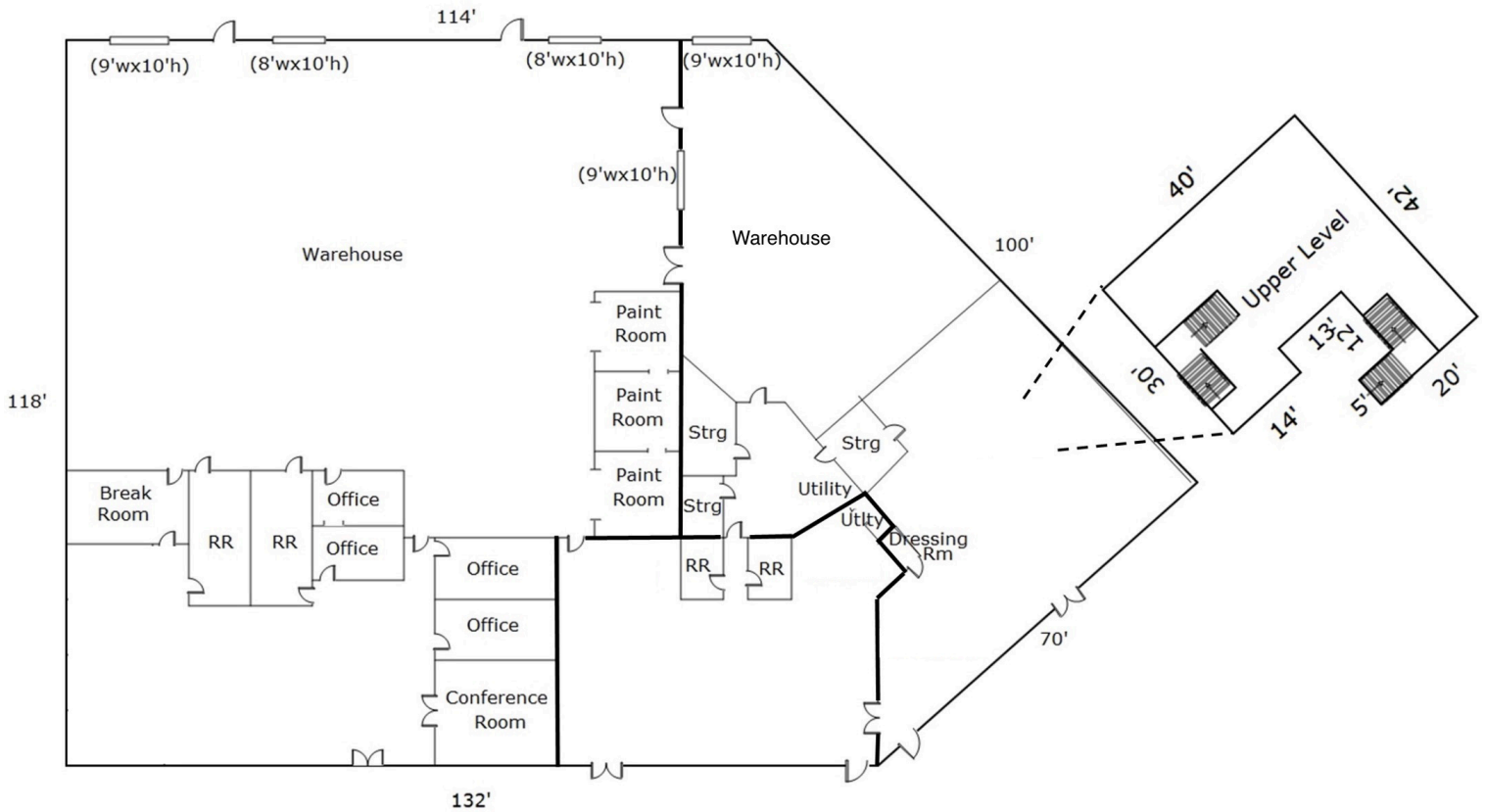
📞 612.500.7997

👁 [GONYEACOMMERCIAL.COM](http://GONYEACOMMERCIAL.COM)



# FLOOR PLAN

110 WALL STREET, ONAMIA, MN 56359



- New LED lighting throughout the building.
- Office walls freshly painted.
- Steel frame construction (built 2005)
- Standing seam steel roof; stucco, stone & steel exterior
- 3-phase power + multiple electrical panels
- 9 rooftop HVAC units + backup system
- City water & sewer
- Hwy 169 frontage with strong visibility Traffic counts: ~6,700–7,200 VPD
- C-1 Highway Commercial zoning (flexible use)
- Single-user or multi-tenant potential
- Demisable for multi-tenant use if leased

**HUNTER STANEK**

✉ HUNTER@GCPMN.COM

☎ 612.500.7997

🌐 GONYEACOMMERCIAL.COM

**GONYEA**  
COMMERCIAL PROPERTIES, INC.